

# OLED DISPLAY MODULE

## Product Specification

<b>CUSTOMER</b>	<b>Standard</b>	
<b>PRODUCT NUMBER</b>	<b>DD-2832WE-6A</b>	
<b>CUSTOMER APPROVAL</b>		<b>Date</b>

INTERNAL APPROVALS		
Product Mgr	Doc. Control	Electr. Eng
<b>Bazile Peter</b>	<b>Bazile Peter</b>	<b>Luo Luo</b>
Date: 08/05/12	Date: 08/05/12	Date: 08/05/12

Product No.	DD-2832WE-6A	REV. B

Page	1 / 30
------	--------

## TABLE OF CONTENTS

<b>1</b>	<b>MAIN FEATURES</b> .....	<b>4</b>
<b>2</b>	<b>MECHANICAL SPECIFICATION</b> .....	<b>5</b>
2.1	MECHANICAL CHARACTERISTICS .....	5
2.2	MECHANICAL DRAWING .....	6
<b>3</b>	<b>ELECTRICAL SPECIFICATION</b> .....	<b>7</b>
3.1	ABSOLUTE MAXIMUM RATINGS .....	7
3.2	ELECTRICAL CHARACTERISTICS .....	8
3.3	INTERFACE PIN ASSIGNMENT .....	9
3.4	BLOCK DIAGRAM .....	11
3.5	AC CHARACTERISTICS .....	13
<b>4</b>	<b>OPTICAL SPECIFICATION</b> .....	<b>14</b>
4.1	OPTICAL CHARACTERISTICS .....	14
<b>5</b>	<b>FUNCTIONAL SPECIFICATION</b> .....	<b>15</b>
5.1	COMMANDS .....	15
5.2	POWER UP/DOWN SEQUENCE .....	15
5.3	RESET CIRCUIT.....	16
5.4	ACTUAL APPLICATION EXAMPLE .....	17
<b>6</b>	<b>PACKAGING AND LABELLING SPECIFICATION</b> .....	<b>19</b>
6.1	LABELLING & MARKING .....	20
<b>7</b>	<b>QUALITY ASSURANCE SPECIFICATION</b> .....	<b>20</b>
7.1	CONFORMITY .....	20
7.2	DELIVERY ASSURANCE.....	20
7.3	DEALING WITH CUSTOMER COMPLAINTS.....	25
<b>8</b>	<b>RELIABILITY SPECIFICATION</b> .....	<b>26</b>
8.1	RELIABILITY TESTS .....	26
8.2	LIFE TIME .....	26
8.3	FAILURE CHECK STANDARD.....	26
<b>9</b>	<b>HANDLING PRECAUTIONS</b> .....	<b>27</b>
9.1	HANDLING PRECAUTIONS .....	27
9.2	STORAGE PRECAUTIONS .....	28
9.3	DESIGNING PRECAUTIONS .....	28
9.4	OTHER PRECAUTIONS .....	29
9.5	PRECAUTIONS WHEN DISPOSING OF THE OEL DISPLAY MODULES .....	29
<b>10</b>	<b>SUPPORTED ACCESSORIES</b> .....	<b>30</b>
10.1	DUO KIT .....	30
10.2	TRANSITION BOARD CARD.....	30
10.3	CONNECTOR BOARD CARD .....	30
10.4	CONNECTOR.....	30

Product No.	DD-2832WE-6A	REV. B

Page	2 / 30
------	--------

REVISION RECORD

<b>Rev.</b>	<b>Date</b>	<b>Page</b>	<b>Chapt.</b>	<b>Comment</b>	<b>ECR no.</b>
A	08 May 12			First Issue	
B	28 Nov 12	30	10	Add chapter 10 supported accessories	

Product No.	DD-2832WE-6A	REV. B

Page	3 / 30
------	--------

## 1 MAIN FEATURES

ITEM	CONTENTS
Display Format	128 x 32 Dots
Overall Dimensions(W*H*T)	30.00×11.50× 1.45 mm
Active Area(W*H)	22.384 × 5.584 mm
Viewing Area(W*H)	24.384 × 7.584 mm
Display Mode	Passive Matrix
Display Colour	White Colour
Driving Method	1 / 32 duty
Driver IC	SSD1306
Operating temperature	-40°C ~ +70°C
Storage temperature	-40°C ~ +80°C

Product No.	DD-2832WE-6A	REV. B

Page	4 / 30
------	--------

## 2 MECHANICAL SPECIFICATION

### 2.1 MECHANICAL CHARACTERISTICS

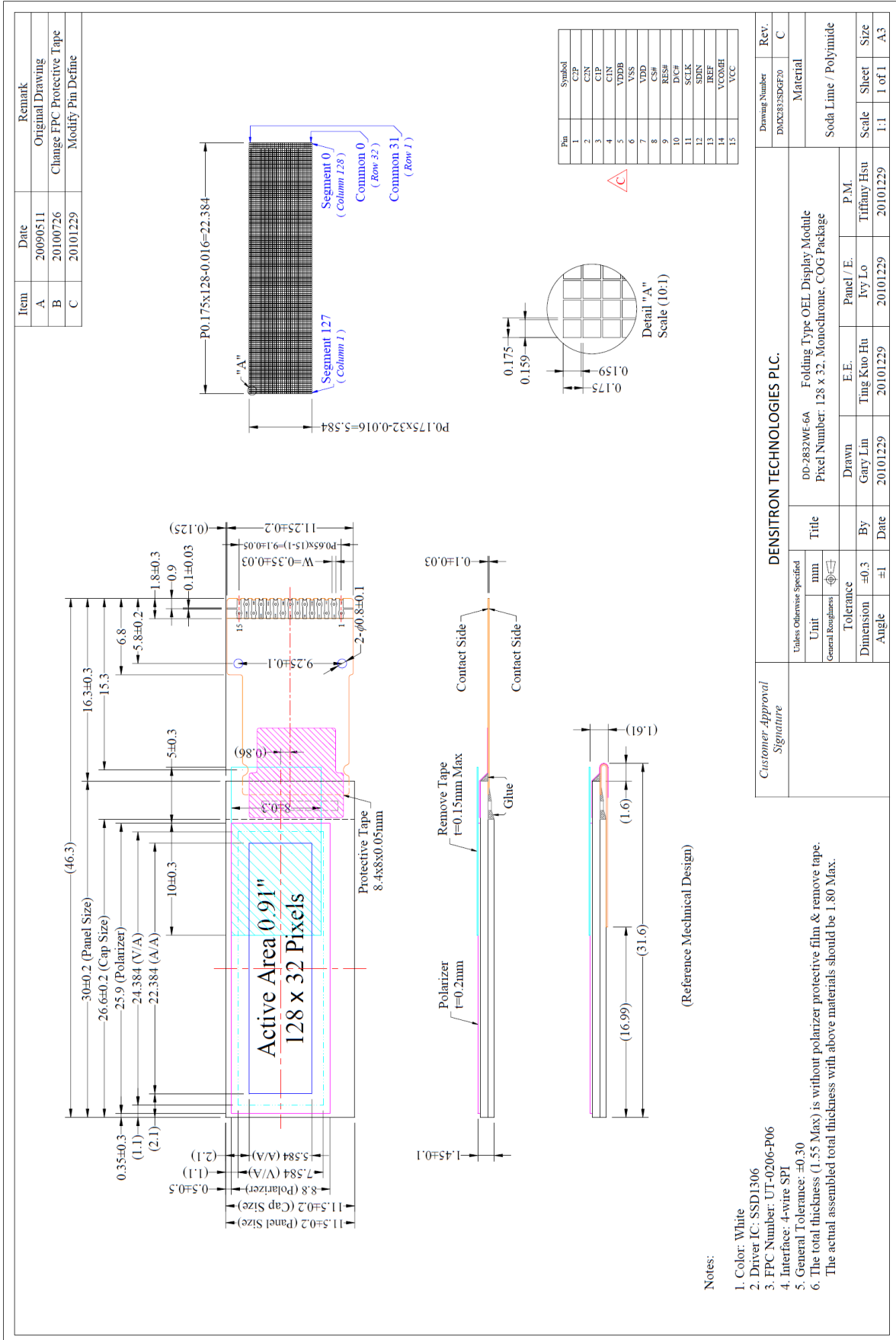
---

ITEM	CHARACTERISTIC	UNIT
Display Format	128 x 32	Dots
Overall Dimensions	30.00 × 11.50 × 1.45	mm
Viewing Area	24.384 × 7.584	mm
Active Area	22.384 × 5.584	mm
Dot Size	0.159 × 0.159	mm
Dot Pitch	0.175 × 0.175	mm
Weight	1.05	g
IC Controller/Driver	SSD1306	

Product No.	DD-2832WE-6A	REV. B

Page	5 / 30
------	--------

## 2.2 MECHANICAL DRAWING



Product No.	DD-2832WE-6A	REV. B
-------------	--------------	--------

Page	6 / 30
------	--------

### 3 ELECTRICAL SPECIFICATION

#### 3.1 ABSOLUTE MAXIMUM RATINGS

VSS = 0 V, Ta = 25 °C

Item	Symbol	Min	Max	Unit	Note
Supply Voltage for Logic	V <sub>DD</sub>	-0.3	4	V	Note 1, 2
Supply Voltage for Display	V <sub>CC</sub>	0	11	V	Note 1, 2
Supply Voltage for DC/DC	V <sub>DDB</sub>	-0.3	5	V	Note 1, 2
Operating Temperature	T <sub>op</sub>	-40	70	°C	
Storage Temperature	T <sub>stg</sub>	-40	85	°C	Note 3
Static Electricity	Be sure that you are grounded when handling displays.				

Note 1: All the above voltages are on the basis of “VSS=0V”.

Note 2: When this module is used beyond above absolute maximum ratings, permanent damage to the module may occur. Also for normal operations it's desirable to use this module under the conditions according to Section 3.2 “Electrical Characteristics” and section 4.1 “Optical Characteristic”. If this module is used beyond these conditions, the module may malfunction and the reliability could deteriorate.

Note 3: The defined temperature ranges do not include the polarizer. The maximum withstood temperature of the polarizer should be 80°C.

Product No.	DD-2832WE-6A	REV. B

Page	7 / 30
------	--------

## 3.2 ELECTRICAL CHARACTERISTICS

### 3.2.1 DC Characteristics

Characteristics	Symbol	Conditions	Min	Typ	Max	Unit
Supply Voltage for Logic	V <sub>DD</sub>		1.65	2.8	3.3	V
Supply Voltage for Display (Supply Externally)	V <sub>CC</sub>	Note 1	7.0	7.25	7.5	V
Supply Voltage for DC/DC	V <sub>DDB</sub>	Internal DC/DC	3.3	-	4.2	V
Supply Voltage for Display (Generated by Internal DC/DC)	V <sub>CC</sub>	Note 1 Internal DC/DC	7.0		7.5	
High Level Input	V <sub>IH</sub>	I <sub>out</sub> =100μA, 3.3 MHz	0.8xV <sub>DD</sub>	-	V <sub>DD</sub>	V
Low Level Input	V <sub>IL</sub>	I <sub>out</sub> =100μA, 3.3 MHz	0	-	0.2xV <sub>DD</sub>	V
High Level Output	V <sub>OH</sub>	I <sub>out</sub> =100μA, 3.3 MHz	0.9xV <sub>DD</sub>	-	V <sub>DD</sub>	V
Low Level Output	V <sub>OL</sub>	I <sub>out</sub> =100μA, 3.3 MHz	0	-	0.1xV <sub>DD</sub>	V
Operating Current for VDD	I <sub>DD</sub>		-	180	300	μA
Operating Current for VCC (VCC Supplied Externally)	I <sub>CC</sub>	Note 2		3.0	3.8	mA
		Note 3		4.5	5.6	
		Note 4		7.8	9.8	
Operating Current for VBAT(VCC Generated by Internal DC/DC)	I <sub>DDB</sub>	Note 2		9.1	11.4	mA
		Note 3		13.3	16.6	
		Note 4		21.7	27.1	
Sleep Mode Current for VDD	I <sub>DD, SLEEP</sub>	-	-	1	5	μA
Sleep Mode Current for VCC	I <sub>CC, SLEEP</sub>	-	-	2	10	μA

Note 1: Brightness (L<sub>br</sub>) and Supply Voltage for Display (V<sub>CC</sub>) is subject to the change of the panel characteristics and the customer's request.

Note 2: V<sub>DD</sub>= 2.8V, V<sub>CC</sub> = 7.25V, 30% Display area turned on.

Note 3: V<sub>DD</sub>= 2.8V, V<sub>CC</sub> = 7.25V, 50% Display area turned on.

Note 4: V<sub>DD</sub> = 2.8V, V<sub>CC</sub> = 7.25V, 100% Display area turned on

\*Software configuration follows Section 5.4 Actual Application Example

Product No.	DD-2832WE-6A	REV. B

Page	8 / 30
------	--------



### 3.3 INTERFACE PIN ASSIGNMENT

No.	Symbol	I/O	Function
1	C2P	I	<p><b>Positive Terminal of the Flying Inverting Capacitor</b>  <b>Negative Terminal of the Flying Boost Capacitor</b>            The charge-pump capacitors are required between the terminals. They must be floating when the converter is not used.</p>
2	C2N	I	
3	C1P	I	
4	C1N	I	
5	VDDB	P	<p><b>Power Supply for DC/DC Converter Circuit</b>            This is the power supply pin for the internal buffer of the DC/DC voltage converter. It must be connected to external source when the converter is used. It should be connected to VDD when the converter is not used.</p>
6	VSS	P	<p><b>Ground of OEL System</b>            This is a ground pin. It acts as a reference for the logic pins. The OEL driving voltages and the analogue circuits. It must be connected to external ground.</p>
7	VDD	P	<p><b>Power Supply for Logic</b>            This is a voltage supply pin. It must be connected to external source</p>
8	CS#	I	<p><b>Chip Select</b>            This pin is the chip select input. The chip is enabled for MCU communication only when CS# is pulled low.</p>
9	RES#	I	<p><b>Power Reset for Controller and Driver</b>            This pin is reset signal input. When the pin is low, initialization of the chip is executed.</p>
10	D/C#	I	<p><b>Data/Command Control</b>            This pin is Data/Command control pin. When the pin is pulled high, the data at SDIN is treated as data. When it is pulled low, the data at SDIN will be transferred to the command register. For detail relationship to MCU interface signals, please refer to the Timing Characteristics Diagrams</p>
11	SCLK	I	<p><b>Serial Clock Input Signal</b>            The transmission of information in the bus is following a clock signal. Each transmission of data bit is taken place during a single clock period of this pin</p>
12	SDIN	I	<p><b>Serial Data Input Signal</b>            This pin acts as a communication channel. The input data through SDIN are latched at the rising edge of SCLK in the sequence of MSB first and converted to 8-bit parallel data and handled at the rising edge of last serial clock. SDIN is identified to display data or command by D/C# bit data at the rising of first SCLK.</p>
13	IREF	I	<p><b>Current Reference for Brightness Adjustment</b>            This pin is segment current reference pin. A resistor should be connected between this pin and VSS. Set the current lower than 12.5µA.</p>
14	VCOMH	O	<p><b>Voltage Output High Level for COM Signal</b>            This pin is the input pin for the voltage output high level for COM signals. A capacitor should be connected between this pin and VSS.</p>

Product No.	DD-2832WE-6A	REV. B

Page	9 / 30
------	--------

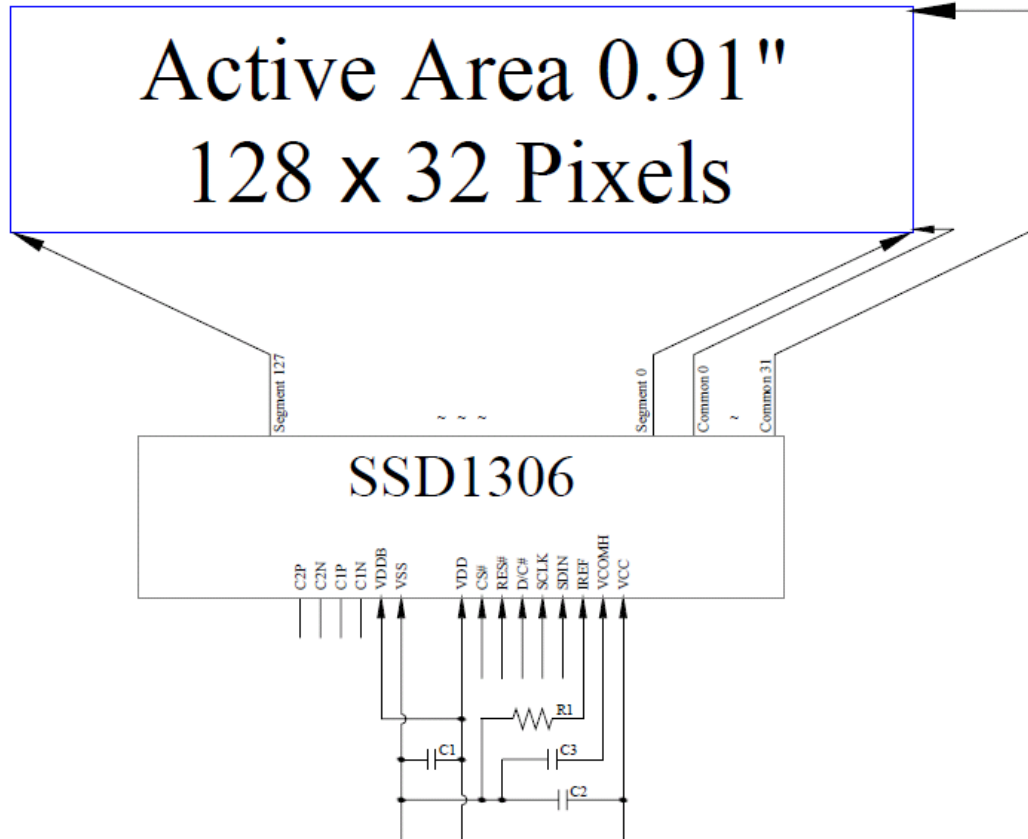
No.	Symbol	I/O	Function
15	VCC	P	<p><b>Power Supply for OEL Panel</b>            This is the most positive voltage supply pin of the chip. A stabilizing capacitor should be connected between this pin and VSS when the converter is used. It must be connected to external source when the converter is not used.</p>

Product No.	DD-2832WE-6A	REV. B

Page	10 / 30
------	---------

### 3.4 BLOCK DIAGRAM

#### 3.4.1 VCC Supplied Externally



Pins connected to MCU interface: RES#, SCL and SDA

C1: 1uF

C2: 4.7uF

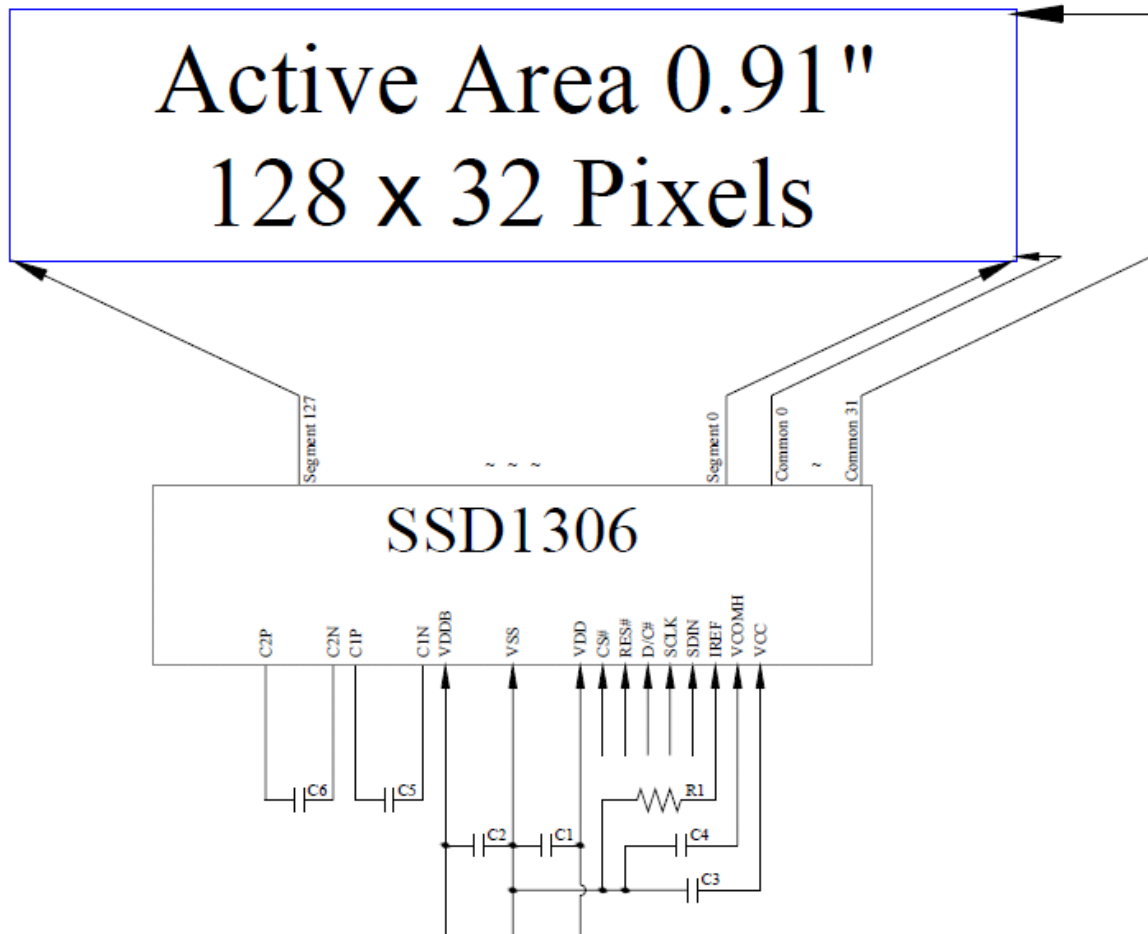
C3: 4.7uF / 16V X7R

R1: 390kΩ,  $R1 = (\text{Voltage at IREF} - VSS) / IREF$

Product No.	DD-2832WE-6A	REV. B

Page	11 / 30
------	---------

### 3.4.1 VCC Generated by Internal DC/DC Circuit



Pins connected to MCU interface: RES#, SCL and SDA

C1, C2: 1uF

C3: 2.2uF

C4: 4.7uF / 16V X7R

C5, C6: 1uF / 16V X5R

R1: 390kΩ,  $R1 = (\text{Voltage at IREF} - VSS) / IREF$

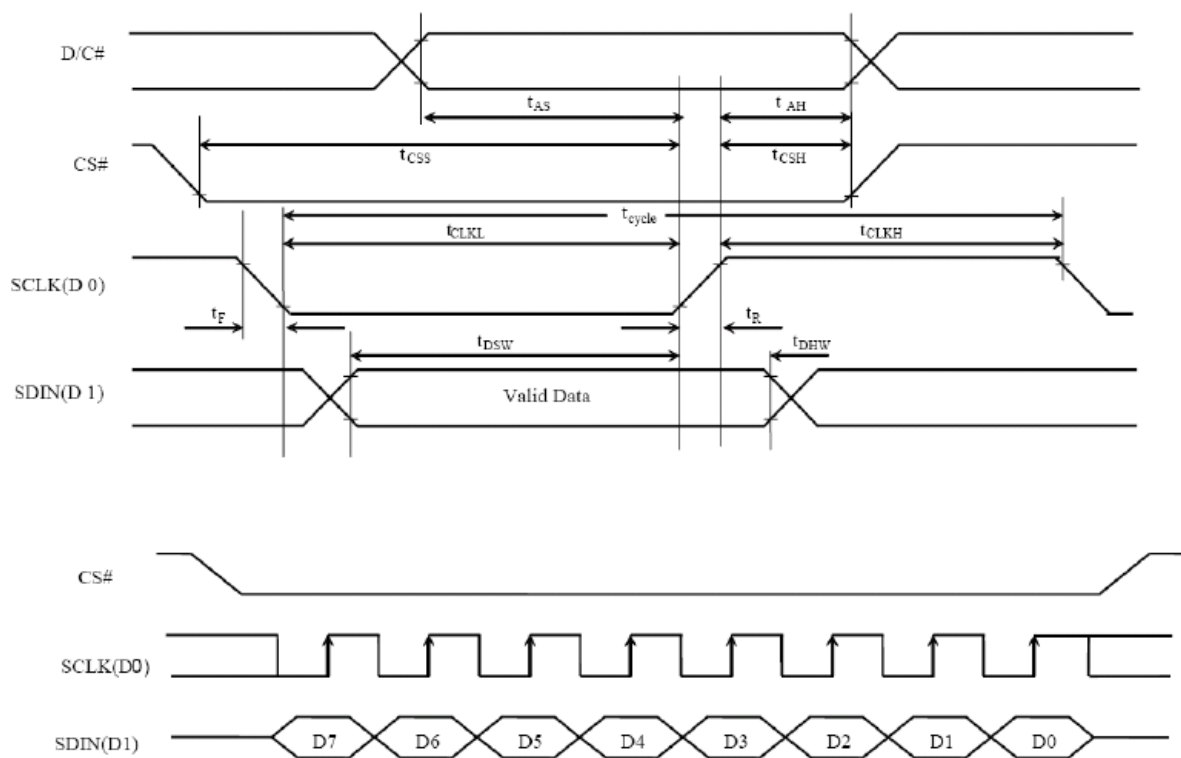
Product No.	DD-2832WE-6A	REV. B

Page	12 / 30
------	---------

### 3.5 AC CHARACTERISTICS

Symbol	Description	Min	Max	Unit
$t_{cycle}$	Clock Cycle Time	100	-	ns
$t_{AS}$	Address Setup Time	15	-	ns
$t_{AH}$	Address Hold Time	15	-	ns
$t_{CSS}$	Chip Select Setup Time	20	-	ns
$t_{CSH}$	Chip Select Hold Time	10	-	ns
$t_{DSW}$	Write Data Setup Time	15	-	ns
$t_{DHW}$	Write Data Hold Time	15	-	ns
$t_{CLKL}$	Clock Low Time	20	-	ns
$t_{CLKH}$	Clock High Time	20	-	ns
$t_R$	Rise Time	-	40	ns
$t_F$	Fall Time	-	40	ns

(VDD – VSS = 1.65V to 3.3V, Ta = 25°C)



## 4 OPTICAL SPECIFICATION

### 4.1 OPTICAL CHARACTERISTICS

Characteristics	Symbol	Condition	Min	Typ	Max	Unit
Brightness	L <sub>br</sub>	Note 1	120	150	-	cd/m <sup>2</sup>
C.I.E.(White)	(X)	C.I.E. 1931	0.25	0.29	0.33	-
	(Y)		0.27	0.31	0.35	
Dark Room Contrast	CR		-	>10,000: 1	-	-
Viewing Angle			-	Free	-	degree
Life time		Note 2		10,000		hour

Note1: Optical measurement taken at V<sub>DD</sub> = 2.8V, V<sub>CC</sub> = 7.25V. Software configuration follows Section 5.4 Actual Application Example.

Note2: Life time: V<sub>CC</sub> = 7.25V, T<sub>a</sub> = 25°C, 50% Checkerboard. Software configuration follows Section 5.4 Actual Application Example. End of lifetime is specified as 50% of initial brightness reached. The average operating lifetime at room temperature is estimated by the accelerated operation at high temperature conditions.

Product No.	DD-2832WE-6A	REV. B

Page	14 / 30
------	---------

## 5 FUNCTIONAL SPECIFICATION

### 5.1 COMMANDS

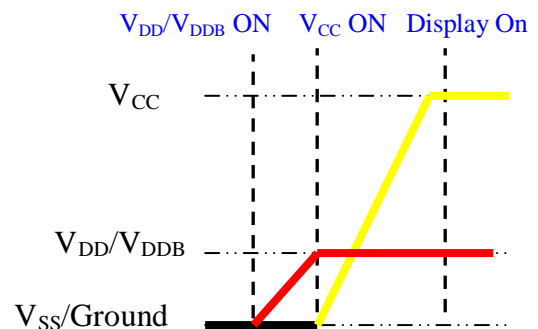
Please refer to the Technical Manual for the SSD1306

### 5.2 POWER UP/DOWN SEQUENCE

To protect the panel and extend the panel lifetime, the driver IC power up/down routine should include a delay period between high voltage and low voltage power sources during turn on/off. It gives the panel enough time to complete the action of charge and discharge before/after the operation.

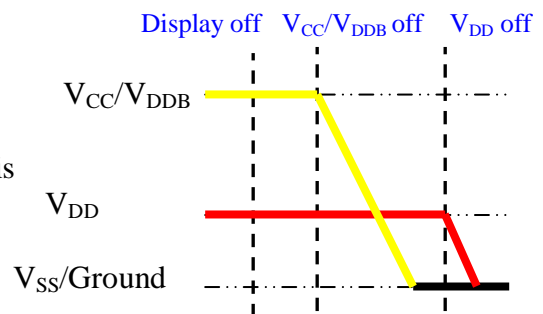
#### 5.2.1 POWER UP SEQUENCE

1. Power up  $V_{DD}/V_{DDB}$
2. Send Display off command
3. Initialization
4. Clear Screen
5. Power up  $V_{CC}$
6. Delay 100ms  
(When  $V_{CC}$  is stable)
7. Send Display on command



#### 5.2.2 POWER DOWN SEQUENCE

1. Send Display off command
2. Power down  $V_{CC}/V_{DDB}$
3. Delay 100ms  
(When  $V_{CC}/V_{DDB}$  is reach 0 and panel is completely discharges)
4. Power down  $V_{DD}$



Note:

- 1) Since an ESD protection circuit is connected between VDD and VCC inside the driver IC, VCC becomes lower than VDD whenever VDD is ON and VCC is OFF.
- 2) VCC / VDDB should be kept float (disable) when it is OFF
- 3) Power Pins (VDD, VCC, VDDB) can never be pulled to ground under any circumstance.
- 4) VDD should not be power down before VCC / VDDB power down.

Product No.	DD-2832WE-6A	REV. B
-------------	--------------	--------

Page	15 / 30
------	---------

### 5.3 RESET CIRCUIT

---

When RES# input is low, the chip is initialized with the following status:

1. Display is OFF
2. 128×64 Display Mode
3. Normal segment and display data column and row address mapping (SEG0 mapped to column address 00h and COM0 mapped to row address 00h)
4. Shift register data clear in serial interface
5. Display start line is set at display RAM address 0
6. Column address counter is set at 0
7. Normal scan direction of the COM outputs
8. Contrast control register is set at 7Fh
9. Normal display mode (Equivalent to A4h command)

Product No.	DD-2832WE-6A	REV. B

Page	16 / 30
------	---------

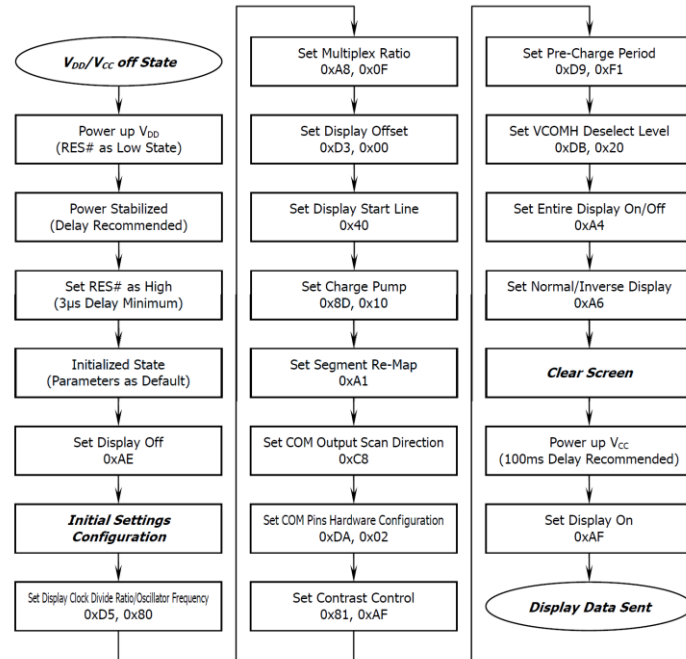


## 5.4 ACTUAL APPLICATION EXAMPLE

Command usage and explanation of an actual example

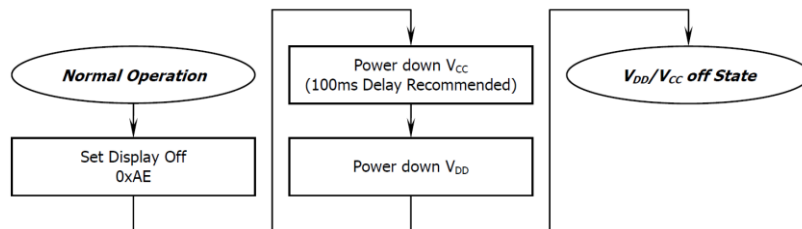
### 5.4.1 External VCC

#### Power on Sequence

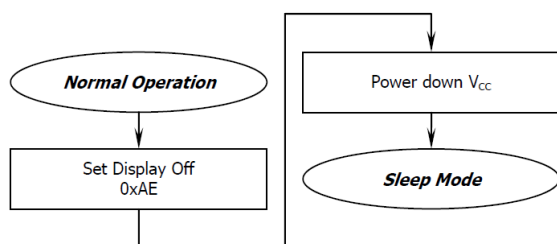


If the noise is accidentally occurred at the displaying window during the operation, please reset the display in order to recover the display function.

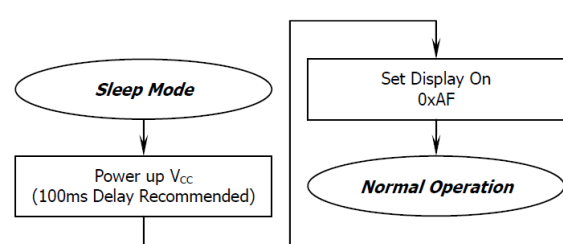
#### Power down Sequence



#### Entering Sleep Mode



#### Exiting Sleep Mode

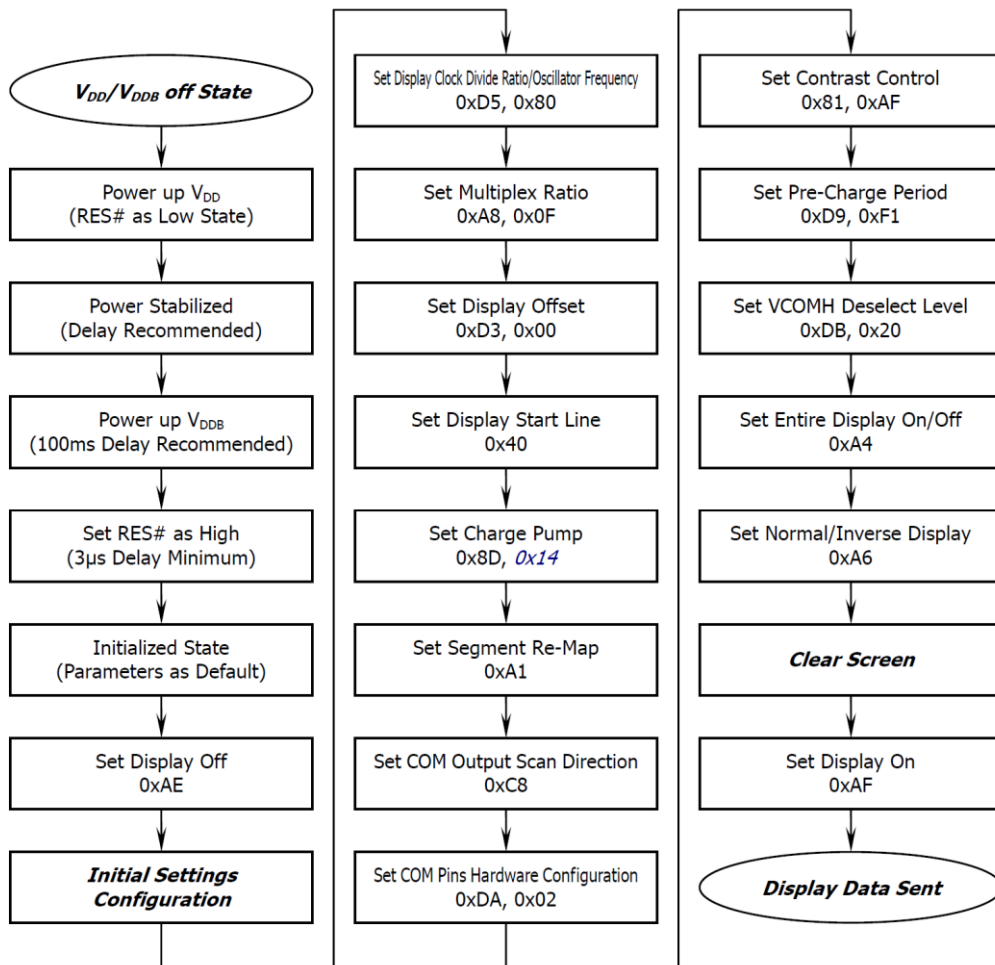


Product No.	DD-2832WE-6A	REV. B
-------------	--------------	--------

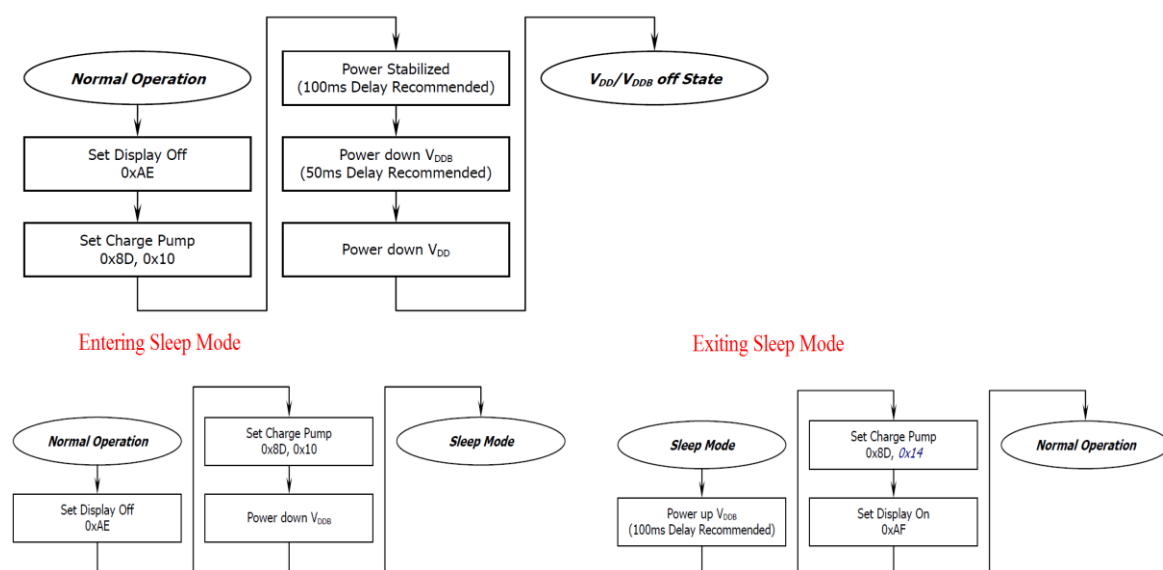
Page	17 / 30
------	---------

### 5.4.2 Internal DC/DC

#### Power on Sequence



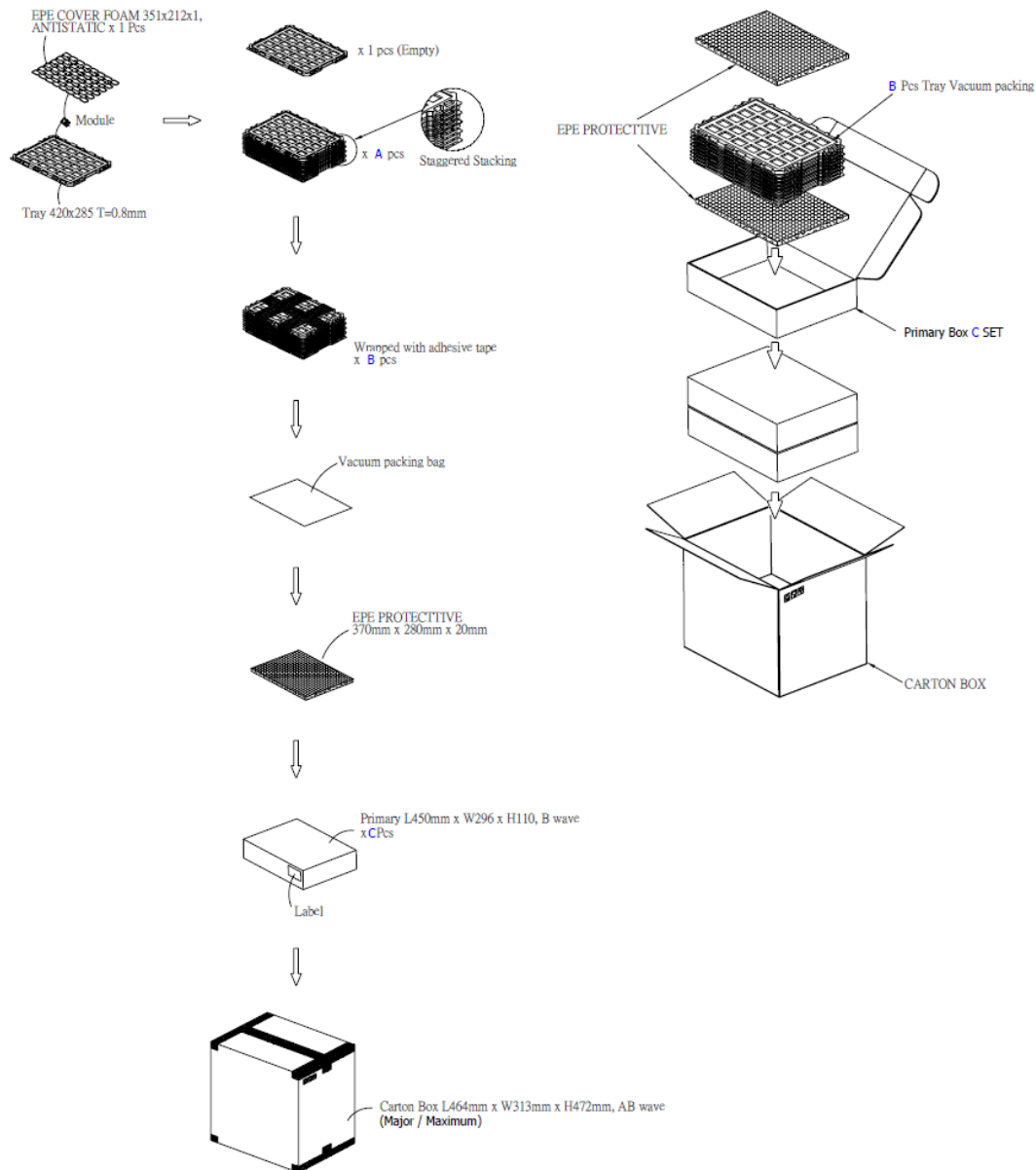
#### Power down Sequence



Product No.	DD-2832WE-6A	REV. B

Page	18 / 30
------	---------

## 6 PACKAGING AND LABELLING SPECIFICATION



Item	Quantity	
<b>Module</b>	<b>1080</b>	<b>per Primary Box</b>
<b>Holding Trays</b> (A)	<b>15</b>	<b>per Primary Box</b>
<b>Total Trays</b> (B)	<b>16</b>	<b>per Primary Box (Including 1 Empty Tray)</b>
<b>Primary Box</b> (C)	<b>1~4</b>	<b>per Carton (4 as Major / Maximum)</b>

Product No.	DD-2832WE-6A	REV. B

Page	19 / 30
------	---------

## 6.1 LABELLING & MARKING

---

DENSITRON DD-2832WE-6A TW YY MM
---------------------------------------

## 7 QUALITY ASSURANCE SPECIFICATION

### 7.1 CONFORMITY

---

The performance, function and reliability of the shipped products conform to the Product Specification.

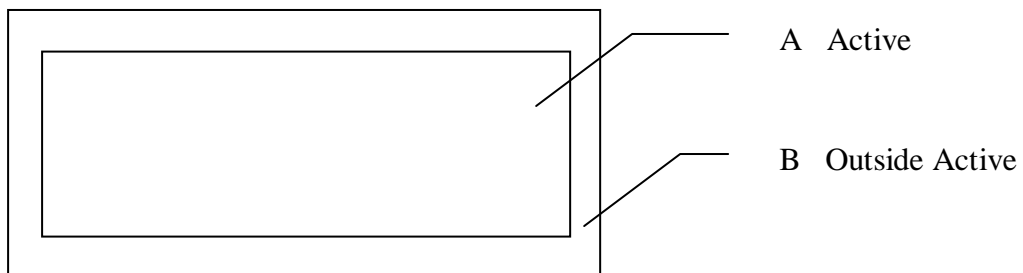
### 7.2 DELIVERY ASSURANCE

---

#### 7.2.1 DELIVERY INSPECTION STANDARDS

Level II, Normal Inspection, Single Sampling, MIL-STD-105E

#### 7.2.2 Zone definition



#### 7.2.3 Environment Required

Test and measurement to be conducted under following conditions

Temperature:	$23 \pm 5^{\circ}\text{C}$
Humidity:	$55 \pm 15\% \text{RH}$
Fluorescent lamp:	30 W
Distance between the Panel & Eyes of the Inspector:	$\geq 30\text{cm}$
Distance between the Panel & the lamp:	$\geq 50\text{cm}$

Product No.	DD-2832WE-6A	REV. B
-------------	--------------	--------

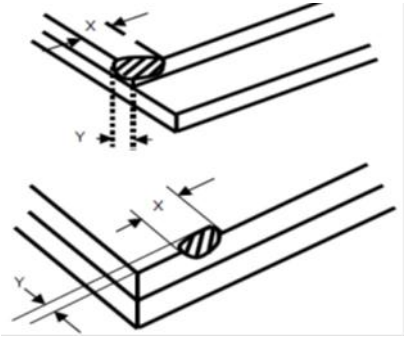
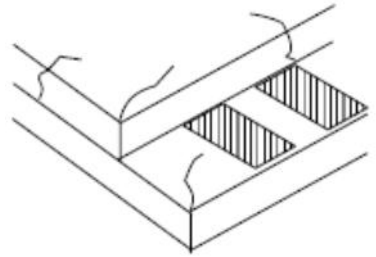

Page	20 / 30
------	---------

Finger glove (or finger cover) must be worn by the inspector. Inspection table or jig must be anti-electrostatic.

### 7.2.4 Criteria & Acceptable Quality Level

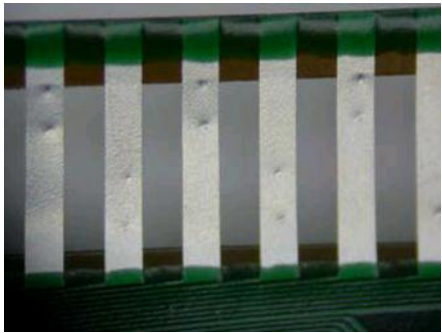
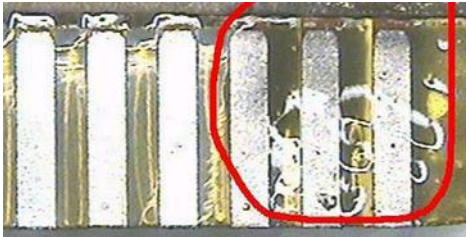
Partition	AQL	Definition
Major	0.65	Defects in Pattern Check (Display On)
Minor	1	Defects in Cosmetic Check (Display Off)

### 7.2.5 Cosmetic Check (Display Off) in Non Active Area

Check Item	Classification	Criteria
Panel General Chipping	Minor	<p>X &gt; 6 mm (Along with Edge) Y &gt; 1 mm (Perpendicular to edge)</p> 
Panel Crack	Minor	<p>Any crack is not allowable</p> 
Copper Exposed (Even Pin or Film)	Minor	Not Allowable by Naked Eye Inspection
Film or Trace Damage	Minor	

Product No.	DD-2832WE-6A	REV. B

Page	21 / 30
------	---------

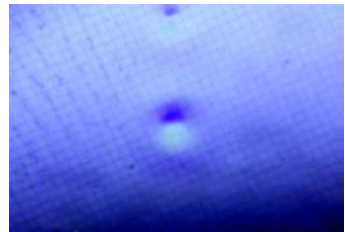
Check Item	Classification	Criteria
Terminal Lead Prober Mark	Acceptable	
Glue or Contamination on Pin (Couldn't Be Removed by Alcohol)	Minor	
Ink Marking on Back Side of panel (Exclude on Film)	Acceptable	Ignore for Any

Product No.	DD-2832WE-6A	REV. B

Page	22 / 30
------	---------

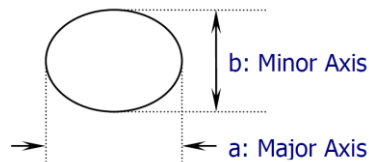
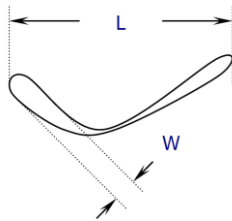
### 7.2.6 Cosmetic Check (Display Off) in Active Area

It is recommended to execute in clear room environment (class 10k) if actual in necessary

Check Item	Classification	Criteria
Any Dirt & Scratch on Polarizer's Protective Film	Acceptable	Ignore for not Affect the Polarizer
Scratches, Fiber, Line-Shape Defect (On Polarizer)	Minor	$W \leq 0.1$ Ignore $W > 0.1,$ $L \leq 2$ $n \leq 1$ $L > 2$ $n = 0$
Dirt, Black Spot, Foreign Material, (On Polarizer)	Minor	$\Phi \leq 0.1$ Ignore $0.1 < \Phi \leq 0.25$ $n \leq 1$ $0.25 < \Phi$ $n = 0$
Dent, Bubbles, White spot (Any Transparent Spot on Polarizer)	Minor	$\Phi \leq 0.5$ <input type="checkbox"/> Ignore if no Influence on Display $0.5 < \Phi$ $n = 0$ 
Fingerprint, Flow Mark (On Polarizer)	Minor	<b>Not Allowable</b>

Protective film should not be tear off when cosmetic check.


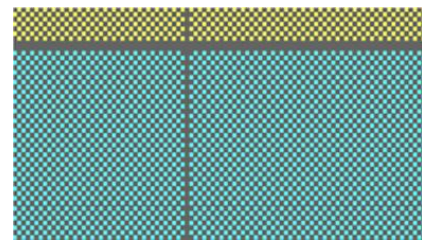
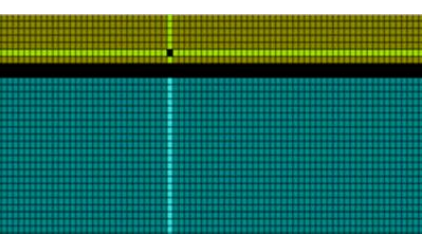
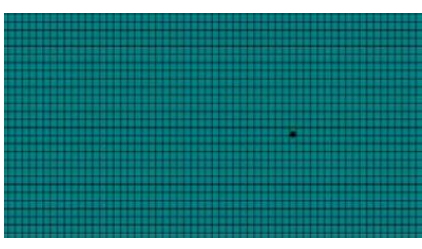
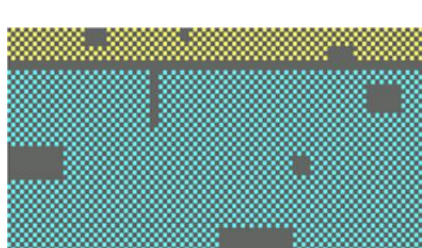
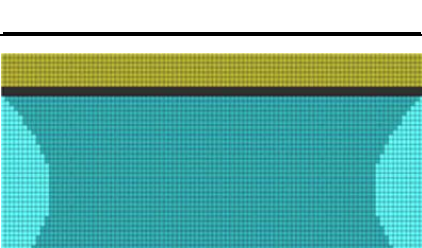
\*\* Definition of W & L &  $\Phi$  (Unit: mm):  $\Phi = (a + b) / 2$



Product No.	DD-2832WE-6A	REV. B

Page	23 / 30
------	---------

7.2.7 Pattern Check (Display On) in Active Area

Check Item	Classification	Criteria
No Display	Major	
Missing Line	Major	
Pixel Short	Major	
Darker Pixel	Major	
Wrong Display	Major	
Un-uniform	Major	



## ***7.3 DEALING WITH CUSTOMER COMPLAINTS***

---

### **7.3.1 Non-conforming analysis**

Purchaser should supply Densitron with detailed data of non-conforming sample.

After accepting it, Densitron should complete the analysis in two weeks from receiving the sample.

If the analysis cannot be completed on time, Densitron must inform the purchaser.

### **7.3.2 Handling of non-conforming displays**

If any non-conforming displays are found during customer acceptance inspection which Densitron is clearly responsible for, return them to Densitron.

Both Densitron and customer should analyse the reason and discuss the handling of non-conforming displays when the reason is not clear.

Equally, both sides should discuss and come to agreement for issues pertaining to modification of Densitron quality assurance standard.

Product No.	DD-2832WE-6A	REV. B

Page	25 / 30
------	---------

## 8 RELIABILITY SPECIFICATION

### 8.1 RELIABILITY TESTS

Test Item	Test Condition	Evaluation and assessment
High Temperature Operation	70°C±2, 240 hours	The operational functions work
Low Temperature Operation	-40°C±2, 240 hours	
High Temperature Storage	85°C±2, 240 hours	
Low Temperature Storage	-40°C±2, 240 hours	
High Temperature & High Humidity Storage(Operation)	60°C±2, 90% RH, 120 hours	
Thermal Shock	-40°C to 85°C, 24 cycles 1 Hour	

- The samples used for above tests do not include polarizer.
- No moisture condensation is observed during tests.

#### 8.1.1 FAILURE CHECK STANDARD

After the completion of the described reliability test, the samples were left at room temperature for 2 hrs prior to conducting the failure test at 23±5 °C;55±15% RH

### 8.2 LIFE TIME

Item	Description
1	Function, performance, appearance, etc. shall be free from remarkable deterioration more than 10,000 hours under ordinary operating conditions of room temperature (25±10 °C), normal humidity (50% RH), and in area not exposed to direct sunlight.
2	End of lifetime is specified as 50% of initial brightness.

### 8.3 FAILURE CHECK STANDARD

After the completion of the described reliability test, the samples were left at room temperature for 2 hrs prior to conducting the failure test at 23 ± 5 ° C; 55 ± 15% RH.

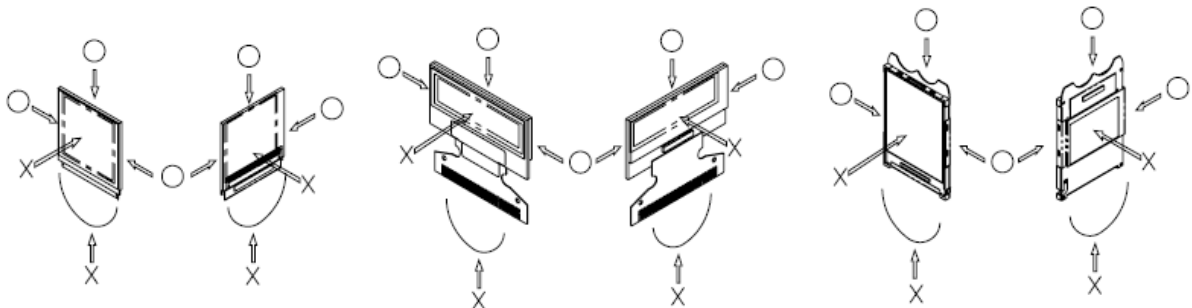
Product No.	DD-2832WE-6A	REV. B
-------------	--------------	--------

Page	26 / 30
------	---------

## 9 HANDLING PRECAUTIONS

### 9.1 HANDLING PRECAUTIONS

- 1) Since the display panel is being made of glass, do not apply mechanical impacts such as dropping from a high position.
- 2) If the display panel is broken by some accident and the internal organic substance leaks out, be careful not to inhale nor lick the organic substance.
- 3) If pressure is applied to the display surface or its neighborhood of the OEL display module, the cell structure may be damaged and be careful not to apply pressure to these sections.
- 4) The polarizer covering the surface of the OEL display module is soft and easily scratched. Please be careful when handling the OEL display module.
- 5) When the surface of the polarizer of the OEL display module has soil, clean the surface. It takes advantage of by using following adhesion tape.
  - \* Scotch Mending Tape No. 810 or an equivalent
 Never try to breathe upon the soiled surface nor wipe the surface using cloth containing solvent such as ethyl alcohol, since the surface of the polarizer will become cloudy.  
 Also, pay attention that the following liquid and solvent may spoil the polarizer:
  - \* Water
  - \* Ketone
  - \* Aromatic Solvents
- 6) Hold OEL display module very carefully when placing OEL display module into the system housing. Do not apply excessive stress or pressure to OEL display module. And, do not over bend the film with electrode pattern layouts. These stresses will influence the display performance. Also, secure sufficient rigidity for the outer cases.



- 7) Do not apply stress to the LSI chips and the surrounding molded sections.
- 8) Do not disassemble nor modify the OEL display module.
- 9) Do not apply input signals while the logic power is off.
- 10) Pay sufficient attention to the working environments when handing OEL display modules to prevent occurrence of element breakage accidents by static electricity.
  - \* Be sure to make human body grounding when handling OEL display modules.
  - \* Be sure to ground tools to use or assembly such as soldering irons.
  - \* To suppress generation of static electricity, avoid carrying out assembly work under dry environments.

Product No.	DD-2832WE-6A	REV. B

Page	27 / 30
------	---------

\* Protective film is being applied to the surface of the display panel of the OEL display module. Be careful since static electricity may be generated when exfoliating the protective film.

- 11) Protection film is being applied to the surface of the display panel and removes the protection film before assembling it. At this time, if the OEL display module has been stored for a long period of time, residue adhesive material of the protection film may remain on the surface of the display panel after removed of the film. In such case, remove the residue material by the method introduced in the above Section 5).
- 12) If electric current is applied when the OEL display module is being dewed or when it is placed under high humidity environments, the electrodes may be corroded and be careful to avoid the above.

## **9.2 STORAGE PRECAUTIONS**

---

- 1) When storing OEL display modules, put them in static electricity preventive bags avoiding exposure to direct sun light nor to lights of fluorescent lamps, etc. and, also, avoiding high temperature and high humidity environments or low temperature (less than 0°C) environments. (We recommend you to store these modules in the packaged state when they were shipped from Densitron Technologies Plc.) At that time, be careful not to let water drops adhere to the packages or bags nor let dewing occur with them.
- 2) If electric current is applied when water drops are adhering to the surface of the OEL display module, when the OEL display module is being dewed or when it is placed under high humidity environments, the electrodes may be corroded and be careful about the above.

## **9.3 DESIGNING PRECAUTIONS**

---

- 1) The absolute maximum ratings are the ratings which cannot be exceeded for OEL display module, and if these values are exceeded, panel damage may be happen.
- 2) To prevent occurrence of malfunctioning by noise, pay attention to satisfy the VIL and VIH specifications and, at the same time, to make the signal line cable as short as possible.
- 3) We recommend you to install excess current preventive unit (fuses, etc.) to the power circuit (VDD). (Recommend value: 0.5A)
- 4) Pay sufficient attention to avoid occurrence of mutual noise interference with the neighboring devices.
- 5) As for EMI, take necessary measures on the equipment side basically.
- 6) When fastening the OEL display module, fasten the external plastic housing section.
- 7) If power supply to the OEL display module is forcibly shut down by such errors as taking out the main battery while the OEL display panel is in operation, we cannot guarantee the quality of this OEL display module.
- 8) The electric potential to be connected to the rear face of the IC chip should be as follows: US2066

Product No.	DD-2832WE-6A	REV. B

Page	28 / 30
------	---------

\* Connection (contact) to any other potential than the above may lead to rupture of the IC.

## **9.4 OTHER PRECAUTIONS**

---

- 1) When an OEL display module is operated for a long of time with fixed pattern may remain as an after image or slight contrast deviation may occur. Nonetheless, if the operation is interrupted and left unused for a while, normal state can be restored. Also, there will be no problem in the reliability of the module.
- 2) To protect OEL display modules from performance drops by static electricity rapture, etc., do not touch the following sections whenever possible while handling the OEL display modules.
  - \* Pins and electrodes
  - \* Pattern layouts such as the FPC
- 3) With this OEL display module, the OEL driver is being exposed. Generally speaking, semiconductor elements change their characteristics when light is radiated according to the principle of the solar battery. Consequently, if this OEL driver is exposed to light, malfunctioning may occur.
  - \* Design the product and installation method so that the OEL driver may be shielded from light in actual usage.
  - \* Design the product and installation method so that the OEL driver may be shielded from light during the inspection processes.
- 4) Although this OEL display module stores the operation state data by the commands and the indication data, when excessive external noise, etc. enters into the module, the internal status may be changed. It therefore is necessary to take appropriate measures to suppress noise generation or to protect from influences of noise on the system design.
- 5) We recommend you to construct its software to make periodical refreshment of the operation statuses (re-setting of the commands and re-transference of the display data) to cope with catastrophic noise.

## **9.5 PRECAUTIONS WHEN DISPOSING OF THE OEL DISPLAY MODULES**

---

- 1) Request the qualified companies to handle industrial wastes when disposing of the OEL display modules. Or, when burning them, be sure to observe the environmental and hygienic laws and regulations.

Product No.	DD-2832WE-6A	REV. B

Page	29 / 30
------	---------

## 10 SUPPORTED ACCESSORIES

### 10.1 DUO KIT

---

Densitron has developed an easy to use yet powerful development and demonstration tool for driving its range of Passive Matrix OLED displays from the USB port of a PC.

DUO (Densitron USB OLED) kit is hot pluggable and does not require extra cables or power supply to run, allowing users to be up and running in minutes.

The kit consists of an OLED display with transition Board, USB controller card, mini USB cable and a CD with software application and drivers.



**Part number: UNDER DEVELOPMENT**

### 10.2 TRANSITION BOARD CARD

---

A Transition board card is like a daughterboard which is meant to be a circuit board for connections between the baseboards (DUO).

It has connector pins for interfacing between the display and the baseboards.

It also includes the OLED display.

**Part number: UNDER DEVELOPMENT**

### 10.3 CONNECTOR BOARD CARD

---

A Connector board card is also a daughterboard which is a circuit board for connection between a microprocessor or microcontroller (customer's system).

**Part number: UNDER DEVELOPMENT**

### 10.4 CONNECTOR

---

Type: hot bar soldering process

No. of connections: 15

Pitch: 0.65mm

Product No.	DD-2832WE-6A	REV. B

Page	30 / 30
------	---------