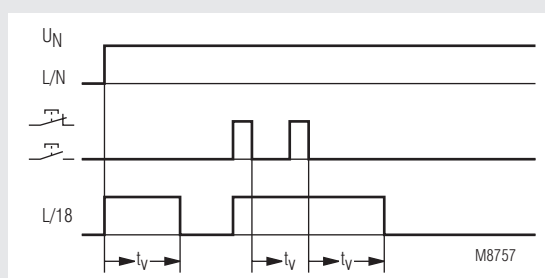


MINITIMER Staircase Lighting Time Switch IK 8810

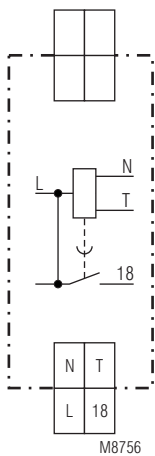


- According to EN 60669
- Setting range 0.5 ... 10 min.
- For 4-wire circuit L on push button and 3-wire circuit N on push button
- Can be retriggered
- Switch for continuous light on unit
- Contact: 16 A
- Width 17.5 mm

Function Diagram



Circuit Diagram



IK 8810.41

Approval and Marking



Application

- Staircase lighting time switch
- Timer, release delay
- Follow-up switch

Function

The timing is retriggerable, i.e. if the push button is pressed again during timing the adjusted delay time starts again without interruption.

Indication

LED: on when output relay activated

Notes

Unit and push button have to be connected to the same phase (see connection diagram) The output contact is not volt free. When voltage is connected to I/N the output contact is closed for the time adjusted on the unit. (single timing)

Technical Data

Time circuit

Time range: 0.5 ... 10 min
Repeat accuracy: < 1 % of setting value

Input

Nominal voltage U_N : AC 230 V
Voltage range: 0.8 ... 1.1 U_N
Nominal consumption
apparent power: 4 VA
effective power: 1 W
Nominal frequency: 50 / 60 Hz
Permitted residual current caused by glow lamps in the push buttons: max. 10 glow lamps à 1 mA

Technical Data

Output

Contacts:	1 NO contact, delay
Contact opening gap:	< 3 mm
Thermal current I_{th}:	16 A
Switching capacity with lamp load	
Fluorescent lamp load	
Duo switching:	
(series compensated)	20 lamps with 58 W each
	5×10^4 switching cycles
Glow lamp load:	1200 W at $T_{ein}/T_{aus} = 1 \text{ s} / 1 \text{ s}$
Short circuit strength	
max. fuse rating:	16 AgL IEC/EN 60 947-5-1
Mechanical life:	> 10^6 switching cycles

General Data

Nominal operating mode:	impulse operation
Temperature range:	- 20 ... + 60°C
Clearance and creepage distances	
rated impulse voltage / pollution degree:	4 kV / 2 IEC 60 664-1
EMC	
Electrostatic discharge (ESD):	8 kV (air) IEC/EN 61 000-4-2
HF-irradiation:	10 V / m IEC/EN 61 000-4-3
Fast transients:	2 kV IEC/EN 61 000-4-4
Surge voltages between wires for power supply:	2 kV IEC/EN 61 000-4-5
between wire and ground:	4 kV IEC/EN 61 000-4-5
Interference suppression:	Limit value class B EN 55 011
Degree of protection	
Housing:	IP 40 IEC/EN 60 529
Terminals:	IP 20 IEC/EN 60 529
Housing:	Thermoplast with V0-behaviour according to UL subj. 94
Vibration resistance	Amplitude 0.35 mm frequency 10 ... 55 Hz IEC/EN 60 068-2-6 20 / 045 / 04 IEC/EN 60 068-1
Climate resistance:	
Terminal designation:	EN 50 005
Wire connection:	2 x 2.5 mm ² solid or 2 x 1.5 mm ² stranded wire with sleeve DIN 46 228-1/-2/-3/-4
Wire fixing:	Flat terminals with self-lifting clamping piece IEC/EN 60 999-1
Mounting:	DIN rail IEC/EN 60 715
Weight:	75 g

Dimensions

Width x Height x Depth: 17.5 x 89 x 58 mm

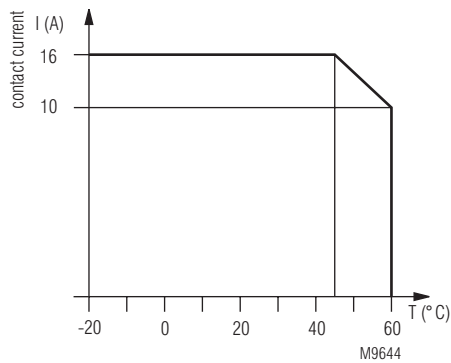
Standard Type

IK 8810.41	AC 230 V	50 / 60 Hz	0.5 ... 10 min	
Article number:	0056928			stock item
• Output:	1 NO contact, delay			
• Nominal voltage U_N :	AC 230 V			
• Timer range:	0.5 ... 10 min			
• Width:	17.5 mm			

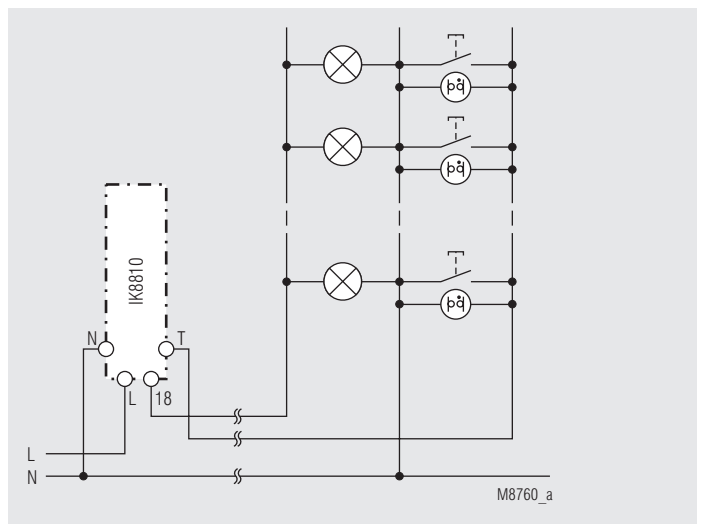
Ordering Example

IK 8810	.41	AC 230 V	50 / 60 Hz	0.5 ... 10 min	
					Time range
					Nominal frequency
					Nominal voltage
					Contacts
					Type

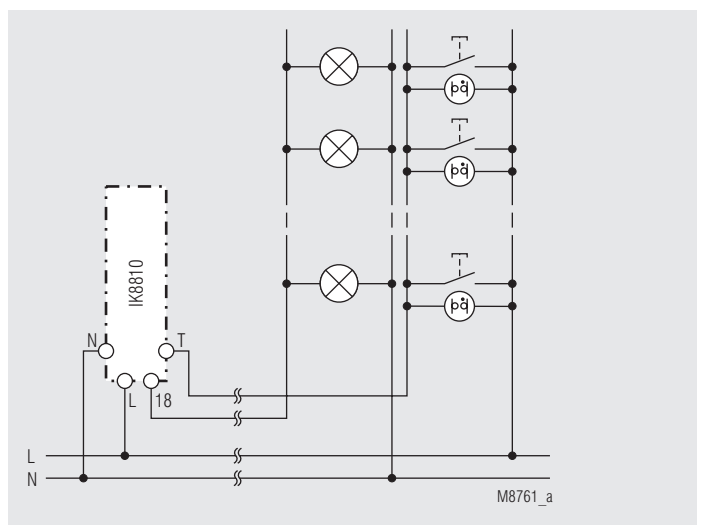
Characteristics



Application Example



3-wire circuit N on push button



4-wire circuit L on push button