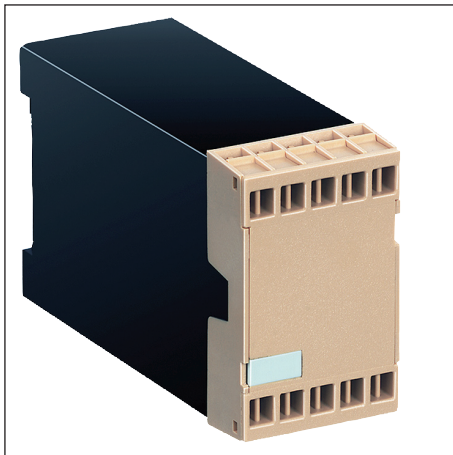
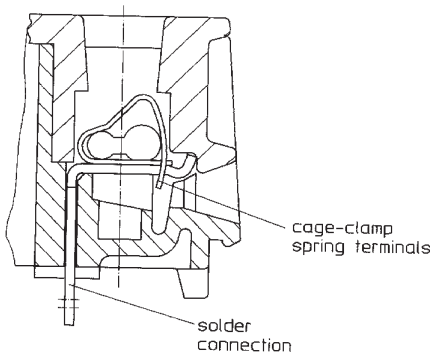


Insulated Enclosure KO 4761

with cage clamp terminals
for machine soldering



- Width 45 mm
- Max. 10 screwless, cage-clamp, spring terminals
- Removable front
- Exchangeable marking plate



Cage-clamp terminals for machine soldering

Technical Data

Order reference:	beige	grey RAL 7035	blue RAL 5015	
KO 4761.120.10.01	.000	.002	.001	with marking plate (without marking plate, on request)

Außenmaße: 45 x 73.2 x 120 mm
Enclosure material: PC-GF, base black,
 Frontcolor, see table

Temperature stability:		
complying with UL 746 B:		125 °C
complying with Vicat		
ISO 306	Meth. B:	148 °C
compl. with ISO 75-2	Meth. A:	138 °C
	Meth. B:	144 °C

Max. permitted power dissipation: 13 W for stand-alone enclosure
 at normal climate 23/50-1 ISO 554

Specific thermal resistance: $R_{th} = 7.5 \text{ K W}$ for stand-alone enclosure

Flame retardancy:
 complying with UL 94: V-0; plate clear = V-2
 complying with IEC 60 707: BH 2-30

Number of terminals: 10; less on request

Terminal material: steel, E-Cu

Max. cross section for connection: 2 x 1.5 mm² stranded ferruled DIN 46 228-1/-2/-3/-4
 2 x 2.5 mm² solid

Insulation of wires length: 10 mm

**Max. contact resistance to
 printed circuit board:** 15 mΩ

Max. current carrying capacity: 16 A

Wire fastening: Screwless connection (Cage Clamp)

Connection inside: Solder connection resp. male connector
 for sleeve B2,8 DIN 46 247-1

Enclosure fastener: Snap-on fastener on top hat rail EN 50 022
 or screwed connection
 M4, Raster 35 x 50 } centre adapter
 M5, Raster 35 x 60 } optional

Creepage current resistance: CTI 175 \approx insulating material III a IEC 60 664-1

Air gap and reepage distance: $\geq 6 \text{ mm}$ IEC 60 664-1

Type of protection: Enclosure IP 40 IEC 60 529
 Terminals IP 20 IEC 60 529
 contact protection complies with VBG 4

Print area: on the front plate 15 x 7,6 mm

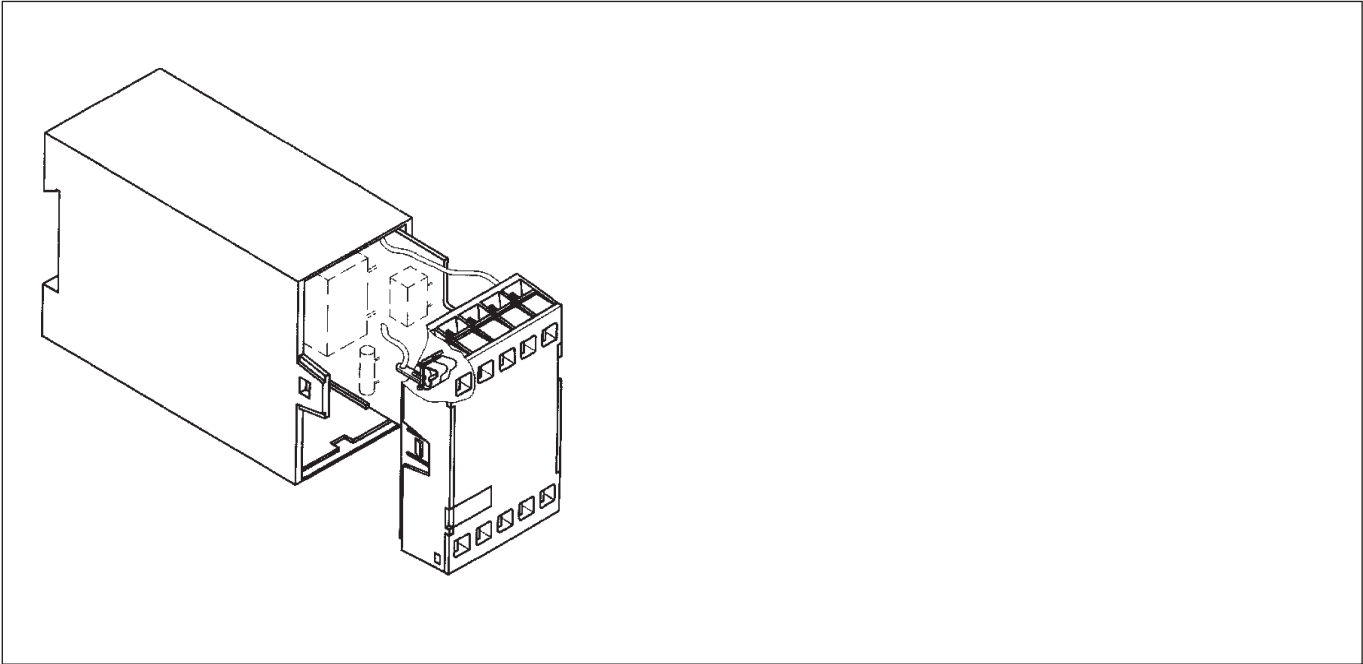
Printed circuit board size: 61 cm²

Printed circuit board holder: PCB guide slots on narrow side

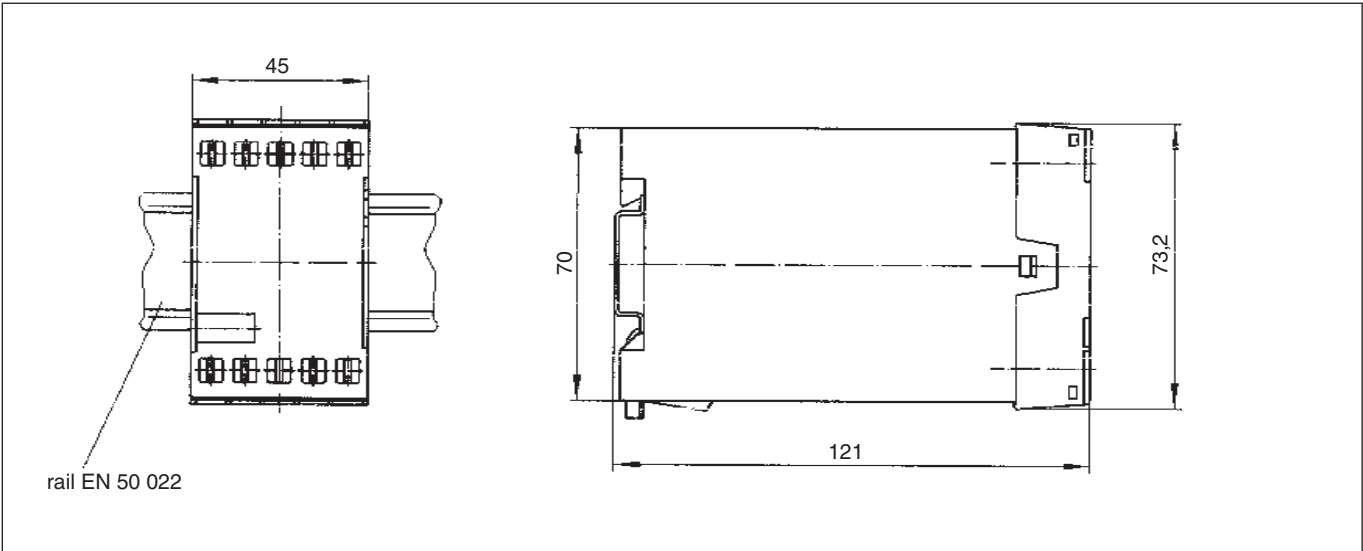
Net weight: 120 g

Accessories: Adapter ET 4762-5

Exploded view



Dimensions



Printed circuit board design

