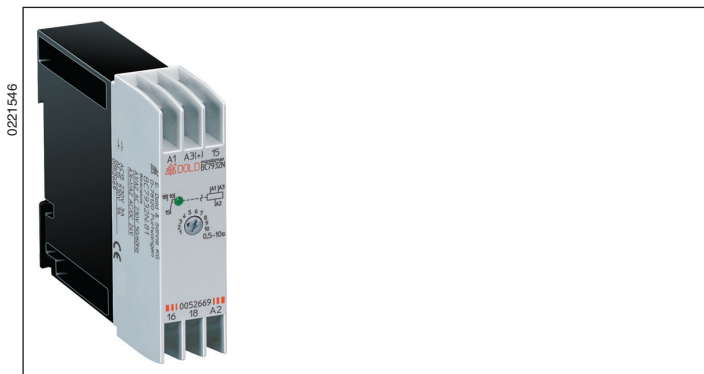
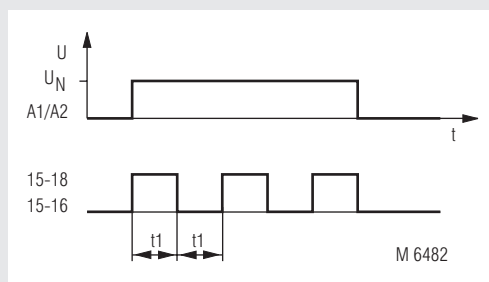


## MINITIMER Flasher Relay BC 7932N



- According to IEC/EN 61 812-1
- Adjustable flashing frequency, pulse times to 100 s
- Start with pulse
- Repeat accuracy  $\leq 0.5 \% + 10 \text{ ms}$
- 2-voltage design
- LED indicator for contact position
- 1 changeover contact
- Wire connection: also 2 x 1.5 mm<sup>2</sup> stranded ferruledb (isolated), DIN 46 228-1/-2/-3/-4 or 2 x 2.5 mm<sup>2</sup> stranded ferruled DIN 46 228-1/-2/-3
- Width 22.5 mm

### Function Diagram



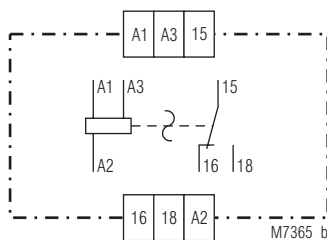
### Approvals and Marking



### Indication

LED: on when output relay activated (contacts 15-18 are closed)

### Circuit Diagram



### Technical Data

#### Time circuit

**Time ranges:** 0.05 ... 1 s (pulse or space)  
0.5 ... 10 s  
5 ... 100 s

**Time setting:** stepless 1:20  
**Recovery time:**  $\leq 100 \text{ ms}$   
**Repeat accuracy:**  $\leq 0.5 \% + 10 \text{ ms}$   
**Voltage influence:**  $\leq 1 \%$   
**Temperature influence:**  $< 0.25 \% / \text{K}$

#### Input

**Nominal voltage  $U_N$ :** AC/DC 24 V<sup>1)</sup> + AC 230 V<sup>2)</sup>  
AC/DC 24 V<sup>1)</sup> + AC 110 ... 127 V<sup>2)</sup>  
AC/DC 24 V<sup>1)</sup> + AC 42 V<sup>2)</sup>

<sup>1)</sup> at terminals A3-A2

<sup>2)</sup> at terminals A1-A2

**Voltage range:** AC 0.8 ... 1.1  $U_N$   
DC 0.9 ... 1.25  $U_N$   
**Nominal consumption:** AC 4 VA DC 0.4 W  
**Nominal frequency:** 50 / 60 Hz  
**Release voltage:** 15 %  $U_N$

#### Output

**Contacts:** 1 changeover contact  
**Thermal current  $I_{th}$ :** 4 A  
**Switching capacity**  
to AC 15  
NO contact: 3 A / AC 230 V IEC/EN 60 947-5-1  
NC contact: 1 A / AC 230 V IEC/EN 60 947-5-1  
**Electrical life** IEC/EN 60 947-5-1  
to AC 15 at 1 A, AC 230 V:  $1.5 \times 10^5$  switching cycles  
**Short circuit strength**  
**max. fuse rating:** 4 A gL IEC/EN 60 947-5-1  
**Mechanical life:**  $10^8$  switching cycles

