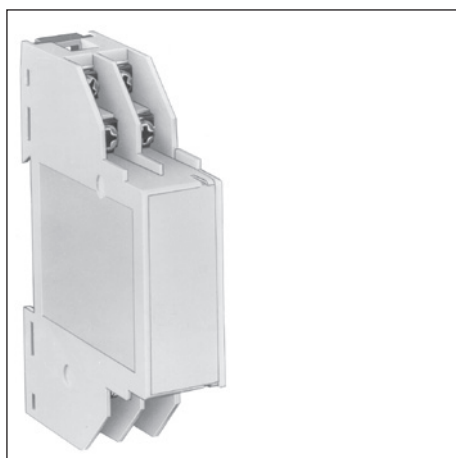
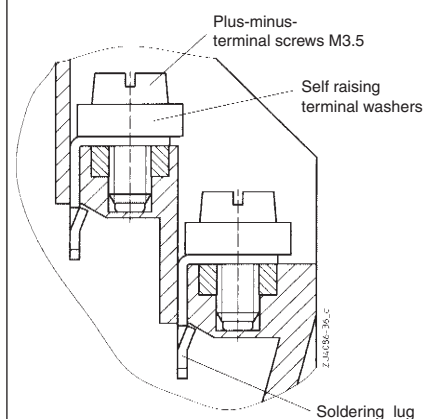


# Insulated Enclosure KU 4086

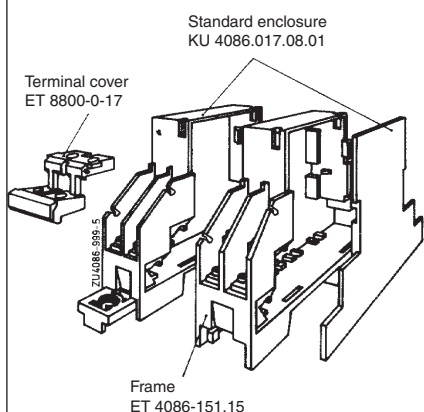
to DIN 43 880 for installation in distribution cabinets or surface mounting



- Width 17.5 mm
- Modular extensions
- 8 connection terminals with plus-minus terminal screws
- Terminal cover as option
- Standard enclosure with flat terminals or with additional high current terminals



Flat terminal for solder connection



## Technical Data

Order reference	KU 4086.017.08.01
Enclosure with 8 flat terminals:	
Enclosure with 4 flat terminals and 2 additional high current terminals:	KU 4086.017.06.02.001
<b>Outer dimensions:</b>	17.5 x 87 x 58 mm modular extensions in steps of 17.5 mm complying with DIN 43 880
Enclosure material:	PC-GF light grey RAL 7035
<b>Temperature stability</b>	
complying with UL 746 B:	125 °C
complying with Vicat ISO 306	Meth. B: 148 °C
complying with ISO 75-2	Meth. A: 138 °C Meth. B: 144 °C
Max. permitted power dissipation:	approx. $n \times 3$ W at normal climate 23 / 50-1 ISO 554
Specific thermal resistance	$R_{th} = 20$ K / W for stand-alone enclosure
Flame retardancy	V-0
complying with UL 94:	
complying with IEC 60 707:	BH 2-30
<b>Number of terminals:</b>	
KU 4086.017.08.01:	8, < 8 on request
KU 4086.017.06.02.001:	6, < 6 on request
Terminal material:	Steel strip, tinned / MS, nickel plated
Max. cross section for connection at flat terminals:	max. 2 x 2.5 mm <sup>2</sup> solid 2 x 1.5 mm <sup>2</sup> stranded ferruled DIN 46 228-1/-2/-3/-4
at high current terminals:	max. 16 mm <sup>2</sup> solid max. 6 mm <sup>2</sup> stranded ferruled DIN 46 228-1/-2/-3/-4
Insulation of wires length:	10 mm
Max. current carrying capacity:	
KU 4086.017.08.01:	16 A
KU 4086.017.06.02.001:	40 A
Wire fastening:	Plus-minus-terminal screws M3.5, with self raising terminal washers. Complies with IEC 60 999-1 40 A - Terminal without terminal washers
Torque:	max. 0.8 Nm
Inner connection:	Soldering lug for stranded
<b>Enclosure fastener:</b>	1. Snap-on fastener on top hat rail EN 50 022 2.) Screw fixing with Doldfix K70/032.5-0-2
<b>Creepage current resistance:</b>	CTI 175 $\hat{=}$ insulated material III a IEC 60 664-1
<b>Air gap and creepage distance:</b>	$\geq 5$ mm IEC 60 664-1
Type of protection	
Enclosure:	IP 40
Terminals:	IP 10 (with terminal cover IP 20 and contact protection complies with VBG 4)
Print area:	42 x 16 x n mm (n = number of modules)
<b>Printed circuit board:</b>	See printed circuit board design
Printed circuit board holder in standard enclosure:	Screw fixing 2 x M2
in frame:	Guide ribs
Net weight:	40 g
<b>Accessories:</b>	
ET 4086-151-15	Frame (for modular extension) with 8 Flat terminals, on request with other terminal inserts and mounting clip(s)
ISO 1207 M2 x 3:	Cylindrical screws for mounting PCB ① in standard enclosures
ET 8800-0-17:	Terminal cover for flat terminals, complies with contact protection according to VBG 4 and DIN 57 106-100
K70/150-0-48:	Blanking plug

