



**light source**

**work equipment**  
**connected load**  
**Power consumption**  
**luminous flux**  
**luminous efficacy**  
**colour temperature**  
**color rendering index (CRI)**

**System of protection**  
**class of protection**  
**technology**  
**operation**  
**luminaire body**

**lamp cover**  
**weight (net)**  
**mains lead**

**design**  
**Fastening**  
**special features**

LED

Energy efficiency category A/A+/A++

electronic transformer

100-240 V; 50/60 Hz

approx. 34 W

approx. 1800 lm

approx. 52 lm/W

neutral white, approx. 4000 K

>= 80

IP20

I

continuously dimmable

multi-function switch

sectional aluminium, anodised, aluminium coloured  
 anodised

polycarbonate, white opal

approx. 1.8 kg

approx. 4,7 m; mains plug

CEE 7/VI

mounted version

screw-down bracket; horizontal

fixed connection, Ra (luminaire) ca. 90

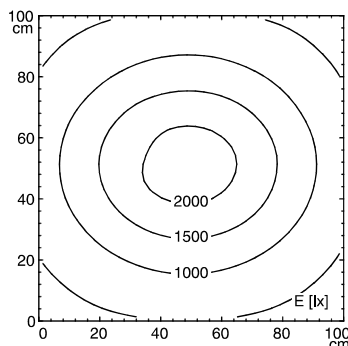


CEE 7/VI

**illuminance**

distance: 50 cm

Em: 1082 lx  
 Emax: 2219 lx  
 Emin: 348 lx



**luminous intensity**

