



**light source**

- work equipment**
- connected load**
- Power consumption**
- luminous flux**
- luminous efficacy**
- colour temperature**
- color rendering index (CRI)**
- System of protection**
- class of protection**
- operation**
- luminaire body**

- lamp cover**
- tubular sections**
- balance of articulation joints**
- weight (net)**
- mains lead**

**Fastening**

**special features**

**LED**

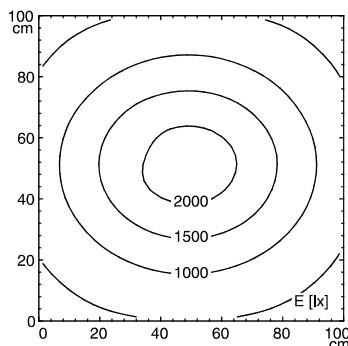
- Energy efficiency category A/A+/A++
- electronic transformer
- 100-240 V; 50/60 Hz
- approx. 34 W
- approx. 1800 lm
- approx. 52 lm/W
- neutral white, approx. 4000 K
- >= 80
- IP20
- I
- multi-function switch
- sectional aluminium, anodised, aluminium coloured anodised
- polycarbonate, white opal
- aluminium coloured anodised
- spring
- approx. 2.3 kg
- approx. 3,4 m; mains plug
- CEE 7/II
- screw-down flange, table clamp (accessory), wall bracket (accessory)
- Ra (luminaire) ca. 90



CEE 7/II

**illuminance**

distance: 50 cm  
**Em:** 1082 lx  
**Emax:** 2219 lx  
**Emin:** 348 lx



**luminous intensity**

