



light source

- work equipment**
- connected load**
- Power consumption**
- luminous flux**
- luminous efficacy**
- light distribution**
- colour temperature**
- color rendering index (CRI)**
- System of protection**
- class of protection**
- technology**
- operation**
- luminaire body**
- lamp cover**
- weight (net)**
- mains supply**

- Fastening**
- dimension**

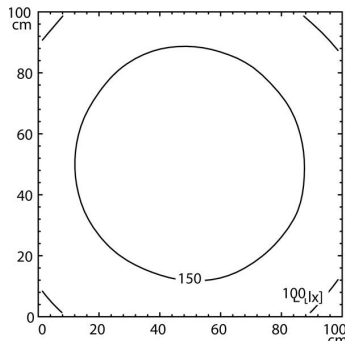
- LED
- Energy efficiency category A/A+/A++
- without
- 20-28V; DC
- approx. 5 W
- approx. 460 lm
- approx. 92 lm/W
- direct
- neutral white, approx. 5000 K
- >= 80
- IP67 (67)
- III
- switchable
- external
- aluminium, untreated, aluminium coloured anodised
- polycarbonate, clear
- approx. 0.4 kg
- built-in plug
- RSFPM 5/0.5 M
- screws
- 215 mm



RSFPM 5/0.5 M

illuminance

distance: 100 cm
Em: 148 lx
Emax: 195 lx
Emin: 95 lx



luminous intensity

