

**light source**

**work equipment**

**connected load**

**Power consumption**

**light distribution**

**System of protection**

**class of protection**

**technology**

**operation**

**luminaire body**

**weight (net)**

**mains supply**

**Fastening**

**dimension**

**light output**

**outside diameter**

**side part**

2 x regular fluorescent lamp T16 39W/840 G5

colour temperature neutral white

Energy efficiency category A

electronic ballast

Energy efficiency index (EEI): A2

220-240 V; 50/60 Hz

approx. 78 W

direct

IP67

I

switchable

external

borosilicate glass,

approx. 4.9 kg

connection box

160 BU/3

lamp bracket (accessory)

A=1475 mm

D=829 mm

70 mm

C with screwed cable gland

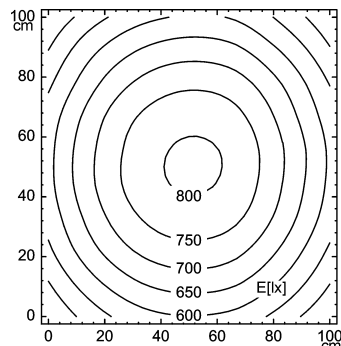


160 BU/3

**illuminance**

Comment: d=100cm

Em: 641 lx  
Emax: 805 lx  
Emin: 451 lx



**luminous intensity**

