



light source

work equipment

connected load

Power consumption

light distribution

glare control

System of protection

class of protection

technology

operation

luminaire body

weight (net)

mains supply

Fastening

dimension

light output

outside diameter

side part

2 x regular fluorescent lamp T16 54W/840 G5

colour temperature neutral white

Energy efficiency category A

electronic ballast

Energy efficiency index (EEI): A2 BAT

220-240 V; 50/60 Hz

approx. 118 W

direct

aluminiumised parabolic louvre

IP67

I

switchable

external

borosilicate glass,

approx. 6.0 kg

connection box

160 BU/3

lamp bracket (accessory)

A=1744 mm

D=1048 mm

70 mm

C with screwed cable gland

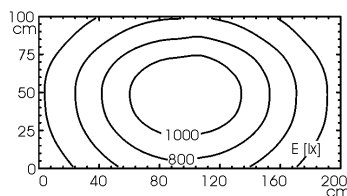


160 BU/3

illuminance

Comment: d=100cm

Em: 698 lx
E_{max}: 1185 lx
E_{min}: 228 lx



luminous intensity

