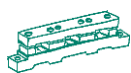




Blocks & Holders



DIN / NH Fuses

Universal Support

TRI60



Universal busbar support, three-pole, as per VDE 0660 Part 500, **with additional mounting holes outside,** allowing attachment of PE/N busbar supports No. 173 and 174
Color: RAL 7035 – Light grey

Version	for bars in mm	Catalog Number	Reference Number	Packing
4 mounting holes	12 x 5 – 10 15 x 5 – 10 20 x 5 – 10 25 x 5 – 10 30 x 5 – 10	00170.000000	B214039	10



Universal busbar support, three-pole, as per VDE 0660 Part 500, **with inside mounting holes,** for bus-mounting equipment ranging up to 630 A rated current, with adjustable stop for adaption to E-Cu busbars 12 to 30 mm wide and in 5 to 10 mm gauge; bar clearance 60 mm, rated voltage up to 660 V, 50/60 Hz to VDE 0660
Color: RAL 7035 – Light grey

Version	for bars in mm	Catalog Number	Reference Number	Packing
2 mounting holes	12 x 5 – 10 15 x 5 – 10 20 x 5 – 10 25 x 5 – 10 30 x 5 – 10	00171.000000	V216080	10



N/PE busbar support for attachment to busbar support No. 170 for 4-pole and 5-pole systems; No. 173 can also be used as individual support.

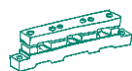
No. 174 can only be used together with part 170.

Version	for bars in mm	Catalog Number	Reference Number	Packing
1 mounting hole	12 x 5 – 10 15 x 5 – 10 20 x 5 – 10 25 x 5 30 x 5	00173.000000	E218642	10

Version	for bars in mm	Catalog Number	Reference Number	Packing
1 mounting hole	12 x 5 – 10 15 x 5 – 10 20 x 5 – 10 25 x 5 30 x 5	00174.000000	B222894	10



Blocks & Holders



DIN / NH Fuses

Universal Support

TRI60



NEOZED bus-mounting fuse base, 3-pole, for 60 mm busbar systems

Choice of busbar width from 12 to 30 mm.

Color:
RAL 7035 – light grey

Rated current in A	Number of poles	Rated voltage in V	Conductor cross-section mm ² max.	Catalog Number	Reference Number	Packing
--------------------	-----------------	--------------------	--	----------------	------------------	---------

Adapter sleeve system, to DIN VDE 0636 Part 41

D02	63	~ 400	5 /10	01750.000000	K222143	10
D02	63	~ 400	10	01751.000000	M201744	10



D type bus-mounting fuse base, 3-pole, for 60 mm busbar systems

Choice of busbar width from 12 to 30 mm.

Color:
RAL 7035 – light grey

Adapter ring system

DII	25	~ 500	5/10	00150.000006	S207430	10
DII	25	~ 500	10	00151.000006	Y211529	10
DIII	63	~ 690	5/10	00160.000006	B213579	10
DIII	63	~ 690	10	00161.000006	B214085	10

Adapter screw system

DII	25	~ 500	5/10	00152.000006	D212040	10
DII	25	~ 500	10	00153.000006	W212562	10
DIII	63	~ 690	5/10	00162.000006	H214597	10
DIII	63	~ 690	10	00163.000006	N215108	10



Cover for NEOZED fuse base, 3-pole

Color :
RAL 7035 – light grey

Size	Version	Catalog Number	Reference Number	Packing
D02	1 -single 27 mm wide	01755.000000	D212523	20
D02	1 1/3 -fach 36 mm wide	01756.000000	N214556	10
D02	2 -double 54 mm wide	01757.000000	B216592	10



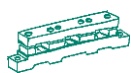
Cover for D-type fuse base, three-pole

Color:
RAL 7035 – light grey

DII	1 -single 42 mm wide	00155.000006	G213078	10
	2 -double 84 mm wide	00157.000006	B211486	10
DIII	1 -single 57 mm wide	00165.000006	P215615	10
	2 -double 114 mm wide	00167.000006	G218644	10



Blocks & Holders



DIN / NH Fuses

Universal Support

TRI60



LV HRC (NH) fuse switch-disconnector size 00 for disc attachment to busbar
as per EN 60947- 3

Rated current in A	Terminal type	Conduction cross-section in mm ²	Catalog Number	Reference Number	Packing
--------------------	---------------	---	----------------	------------------	---------

feeders upward/downward

160	screw	1,6 - 70	08363.000000	P215109	1
160	clamp	6 - 70	08363.200000	Q215616	1

Feature:

Output possible from top or bottom by turning the busbar centering unit, contact cover and lid.

Clearly visible parking position of lid for greater safety during service works in the installation

More features

- convenient sealing of cap and contact cover
- with labelling area for TRI 60 labelling plates (article no. 154)
- all plastic materials are halogen-free and can be recycled
- the new TRI 60 bus-mounting fuse switch-disconnector is in accordance with the latest standards as per DIN VDE 0660/part 107, EN 60 947-3 and IEC 60947-3. Approved
- upon request: special terminal set for aluminium conductors up to 95 mm².
- a signaling switch to signal cap-position and/or a replacement cap fitted with a motor protection switch for fuse-monitoring purposes can be supplied on request.



LV HRC (NH) fuse switch-disconnector size 1
for attachment with adapter, article no. 8361.2, for bar gauge 5 to 10 mm

feeders downward

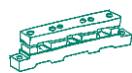
			Catalog Number	Reference Number	Packing
250	screw M10	120	08361.000000	H225729	1

Busbar adapter
for disconnector no. 8361

		120	08361.200000	J225730	2
--	--	-----	--------------	---------	---



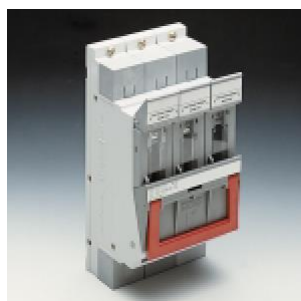
Blocks & Holders



DIN / NH Fuses

Universal Support

TRI60



NH00 LINO CUR switch-disconnector for NH fuses as per:

EN 60947- 3
IEC 60947-3
DIN VDE 0660
Part 107

Poles	Connection	Catalog Number	Reference Number	Packing
-------	------------	----------------	------------------	---------

Bemessungsstrom/-spannung: 125A bei ~500V, 100A bei ~660V

3	Kombianschluß Schraube/	08603.000000	Y212035	1
3	Schelle/3 x 10mm ²	08603.220000	W213574	1



Adapter suitable for NH00 LINO CUR 8603.2 and 8603.22

Version	max. Cu bars mm	Catalog Number	Reference Number	Packing
60 mm System	30 x 10	08600.600000	F217654	1

NH bus-mounting fuse base, 3-pole for bar gauge 5 to 10 mm, with touch guard

Size	Rated current in A	Terminal type	conductor cross-section in mm ²	Catalog Number	Reference Number	Packing
------	--------------------	---------------	--	----------------	------------------	---------

feeders upward

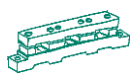
00	160	screw M8	70	08350.000000	X212563	4
00	160	clamp	70	08350.200000	H213079	4

feeders downward

1	250	screw M10	120	08351.000000	C213580	1
2	400	screw M10	240	08352.000000	C214086	1



Blocks & Holders



DIN / NH Fuses

Universal Support

TRI60



Terminal plate, 3-pole

bar gauge in mm	Conductor cross-section in mm ²	Catalog Number	Reference Number	Packing
-----------------	--	----------------	------------------	---------

5	16-120	08355.050000	E212041	1
10	16-120	08355.010000	Z211530	1

terminal compartment 17x16mm

Cover Only

		08358.000000	H218691	1
--	--	--------------	---------	---



Universal terminal

as per
DIN VDE 0606
for flexible connection of
wires, for all busbar widths
5 mm or 10 mm terminal
version: terminals always
open

Conductor Size in mm ²	Terminal compartment in mm	Catalog Number	Reference Number	Packing
-----------------------------------	----------------------------	----------------	------------------	---------

for 5 mm busbar width

1,5 – 16	7,5 x 6	01760.050160	K200730	100
4 – 35	10,8 x 7,5	01760.050350	Z201272	50
16 – 70	13 x 13	01760.050700	J201787	25
16 – 120	17 x 15	01760.051200	V207524	25

for 10 mm busbar width

1,5 – 16	7,5 x 6	01760.010160	W219209	100
4 – 35	10,8 x 7,5	01760.010350	Y219740	50
16 – 70	13 x 13	01760.010700	F222185	25
16 – 120	7,5 x 15	01760.011200	B222940	25



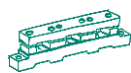
Adapter plate terminals

for connection of flexible
copper strips or rigid
conductor bars

120		01759.201600	M217108	10
-----	--	--------------	---------	----



Blocks & Holders



DIN / NH Fuses

Universal Support

TRI60

All parts of LINDNER TRI 60 shock-hazard protection system are halogen- and chlorine-free and may be recycled

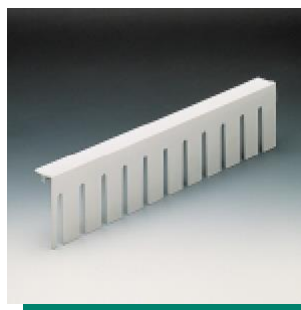


Support for compartment side profile
for attachment to busbar support
Color:
RAL 7035 – light grey

System height in mm			Catalog Number	Reference Number	Packing
32			00140.000000	H218645	10

42			00240.000000	X218129	10
----	--	--	--------------	---------	----

Note:
Catalog Number 240 can also be mounted under the universal busbar support (Catalog Number 170).
Allows the complete busbar system to be lifted at 10 mm.

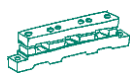


Compartment side profile
Color:
RAL 7035 – light grey

32	closed		00142.000000	D222896	5 x 2 m
32	slotted		00143.000000	T215573	5 x 2 m
42	closed		00242.000000	F222898	5 x 2 m
42	slotted		00243.000000	W206743	5 x 2 m



Blocks & Holders



DIN / NH Fuses

Universal Support

TRI60



Side cover
for busbar support,
attachable to article no.
140 (240) from below
Color:
RAL 7035 – light grey

System height in mm			Catalog Number	Reference Number	Packing
32/42			00145.000000	W218128	10



Busbar support cover
Color:
RAL 7035 – light grey

32			00147.000000	E222897	10
42			00247.000000	N213038	10



Residual field support
Color:
RAL 7035 – light grey

32			00148.000000	D211488	10
42			00248.000000	W215069	10



Residual field cover
Variable, can be cut to
length
Color:
RAL 7035 – light grey

32/42			00149.000000	F214043	10
-------	--	--	--------------	---------	----



**Insulating side cover
with screws**
To cover sides of busbar
ends
Color:
RAL 7035 – light grey
to be screwed to top
section of support no. 170
to 171

			00172.000000	D216594	20
--	--	--	--------------	---------	----

Note:
To be used only by TRI 60 bus bar systems without TRI 60 shock-hazard protection system



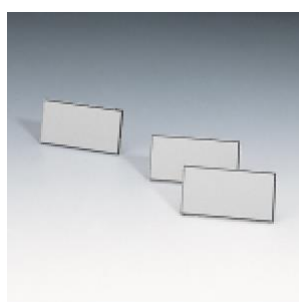
Adapter for panel components with DIN-rails as per EN DIN 50022, plastic

Adapter with wire-connection

Adapter without wire-connection

Rated current in A	Version	Catalog Number	Reference Number	Packing
32	54 mm wide, 1 rail	03800.211000	Y216129	1
32	54 mm wide, 2 rails	03800.221000	V216632	1
63	54 mm wide, 1 rail	03800.311000	G217149	1
63	72 mm wide, 1 rail	03800.312000	L217659	1
63	81 mm wide, 1 rail	03800.313000	W218174	1
	54 mm wide, 2 rails	03801.021000	J218692	1
	54 mm wide	03802.001000	X219210	10
	81 mm wide	03802.003000	Z219741	10

TRI 60 marking system



Self-adhesive labelling plates

Color: silver grey
Material: DUOMATT
for non-smudge writing or engraving

Version	Catalog Number	Reference Number	Packing
20x10 mm	01754.000000	P213039	252
30x10 mm	00154.000000	P200688	162

TRI 60 labelling plates are supplied in specified packaging units on an approximately DIN A4-sized support sheet. These sheets fit easily into normal commercial engraving or plotting machines.

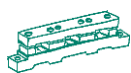
The labelling plates fit exactly into the pockets on the covers of bus-mounting fuse-bases (article no. 1754 fits into all covers for NEOZED bus-mounting fuse-bases, article no. 154 into all covers for D-type bus-mounting fuse-bases, terminal plates and LV HRC 00 bus-mounting fuse switch-disconnectors) and are silver-grey in color to match the TRI 60 design.

Adhesive setting time: approx. 24 hours.

TRI 60 labelling plates can also be used in severe environmental conditions once their adhesive has set (e.g. in the chemical industry).



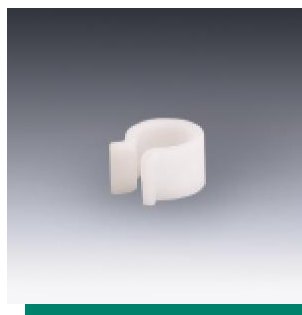
Blocks & Holders



DIN / NH Fuses

Universal Support

TRI60



Distance clip, 9 mm

To enlarge wiring space for NEOZED fuse-bases. For easier mounting, simply plug the DO-base distance clip into busbar. Can be fitted on bars in 5 and 10 mm gauge. If using these clips,, cover 1756 (36 mm) should also be provided.

Size	Busbar gauge in mm		Catalog Number	Reference Number	Packing
D0	5 - 10		01752.000000	Q201747	50



NEOZED (DO) and D screw-caps

Material: plastic
Color: grey

Size	Version	Catalog Number	Reference Number	Packing
D02	E 18 without test hole	01715.000000	L206435	20
D02	E 18 with testing hole	01715.000200	P211981	20

for NEOZED D01 fuses with reduction spacer

D02	E 18 with testing hole	01715.890200	M214026	20
DII	E 27 with testing hole	02071.000000	L201720	20
DIII	E 33 with testing hole	02072.000000	E214019	20



Cover trips for individual busbars

Max. bar width 30 mm, PVC
Color:
RAL 7035 – light grey

	for 5 mm busbars	08356.050000	V218173	1
	for 10 mm busbars	08356.010000	X216128	1



Grip-lug cover
for NH fuse-links,
fits NH bases,
with touch guard

for 1 required for 1 fuse link

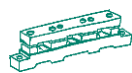
00		08350.900000	G222186	30
-----------	--	--------------	---------	----

for 2 required for 1 fuse link

1		08351.900000	C222941	30
----------	--	--------------	---------	----



Blocks & Holders



DIN / NH Fuses

Universal Support

TRI60

General information

Classification	Busbar sytem with 60 mm phase bar clearance
Spifications	DIN VDE 0660 Part 500, EN 60439-2, IEC439-2
Number of poles	3-, 4- or 5-polig
Rated uninterrupted current I_n	630 A
Rated duty	Continuous duty
Rated current strength	100 kA
Rated short-time current strength	28.5 kA (1 sec.)
Rated operational voltage U_e	Max. ~ 660 (~ 690) V
Rated frequency	45 – 62 Hz
Permissible ambient temperature	–25 bis +55 °C
Storage temperature	–40 bis +80 °C
Size of copper bars	12 x 5 mm to 30 x 10 mm
Degree of protection	IP 3x under central covers IP 2 x with compartmentalized system

Technical specifications on TRI 60 components

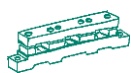
Classification	Busbar support to DIN VDE 0660, Part 500
Specifications	DIN VDE 0660 Part 500
Sizes	3-pole, 1-pole for PE/N
Bar dimensions	from 12 x 5 mm to 30 x 10 mm
Bar centerline clearance	60 mm
Electrodynamic strength	
Conditional short-circuit	up to 100 kA with back-up fuse gL-gG
Short-time current strength	28,5 kA (1 sec.)
Material	high-temperature resistance, self-extinguishing plastic
Flame retardance	to DIN VDE 0471 Part 1 up to 960 °C
Maximum tightening torques of connection screws	5 Nm

TRI 60 labelling system

Classification	DUOMAT self-adhesive labels
Material	DUOMAT two-layer material
Support sheet size	DIN A4
Adhesive setting time	24 h



Blocks & Holders



DIN / NH Fuses

Universal Support

TRI60

TRI 60 bus-mounting fuse-base

Classification	Fuse-base to DIN VDE 0636
Specifications	DIN VDE 0636 Part 1, 10, 31, 41, 301, IEC 60269-3
Sizes	D02 (NEOZED), DII, DIII
Number of poles	3-pole
Rated current I_n	2 – 63 A
Rated voltage U_n	~ 400 V, ~500 V, ~ 660 V, ~ 690 V
Rated frequency	45 – 62 Hz
Rated insulation voltage U_i	2500 V
Permissible ambient temperature	> -5 °C
Storage temperature	Max. 150 °C
Attachment types/cross-sections	DII: 10 mm ² wire clamp connection recessed head screw DIII: 25 mm ² wire clamp connection recessed head screw with covering : safe from finger touch to accident norm VBG 4
Position of normal use	Any
Degree of protection	IP 20
Attachment method	Latching on to TRI 60 busbar system
Contacting	Direct low-loss to surface-treated E-Cu bar

TRI 60 compartmentalized system

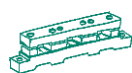
Classification	Shock-hazard protection to UVV-VBG 4
Shock-hazard protection	Protection from front (VBG 4) and extending behind
Degree of protection	IP 20
Materials	Flame-retardant, halogen and CFC-free plastics
Flame retardance	As per DIN VDE 0471 Part 2, 650 °C

TRI 60 equipment adapter

Classification	Equipment adapter for panel components to DIN 43880
Rated current	32 A, 63 A
Width	54 mm, 72 mm, 81 mm
Mounting rail	to DIN EN 50022 plastic
Conductor	AWG 10 = 6 mm ² , AWG 8 = 10 mm ²
Resistance to heat	105 °C
Size of wire-end ferrule	32A: 2,9x2,9 mm 63A: 4,1x4,1 mm



Blocks & Holders



DIN / NH Fuses

Universal Support

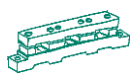
TRI60

TRI 60 LV HRC (NH) bus-mounting fuse switch-disconnector

Classification	LV HRC fuse switch-disconnector to DIN VDE 0660 Part 107	
Specifications	DIN VDE 0660 Part 107, EN 60947-3, IEC 947-3 (IEC 408)	
Sizes	<u>Size 00</u>	<u>Size 1</u>
Number of poles	3-pole	3-pole
Rated uninterrupted current I_n with fuse-links to DIN VDE 0636 and DIN 43620 gG	160 A	250 A
Rated duty	Continuous duty	Continuous duty
Rated operational voltage U_e	~ 660 (~ 690) V	~ 660 (~ 690) V
Rated frequency	45 – 62 Hz	45 – 62 Hz
Rated insulation voltage U_i	1000 V	1000 V
Insulation group to DIN VDE 0110	C	C
Rated short-time breaking capacity I_{cm} (1 sec. with connecting blades)	3 kA	10 kA
Rated short-circuit Making capacity with fuses (at ~ 500 V and rapid making)	50 kA Size 00/160 A	50 kA Size 1/250 A
Rated breaking capacity		
Rated service current I_e at AC 23B / 400 V $\cos \phi = 0.35$	128 A	200 A
AC 22B / 500 V $\cos \phi = 0.65$	160 A	250 A
AC 21B / 660 V $\cos \phi = 0.95$	80 A	125 A
DC 22B / - 400 V $t = 15$ ms	100 A	-----
Storage temperature	- 40 to +80 °C	- 40 to +80 °C
Mechanical service life (switchings)	1000	1000
Loss of contact decks P_v	6 W	17 W
Max. power loss (of fuse-links)	12 W	23 W
Attachment types/cross-sections and maximum admissible tightening torques		
Screw at outgoing terminal	M8 / 15 Nm	M10 / 38 Nm
Clip at outgoing terminal	4 – 70 mm ² / 3 Nm	6 – 150 mm ²
Max. sizes for flexible copper busbars	9 x 6 mm	15 x 9 mm
Max. width for copper bars	20 mm	30 mm
Tightening torque	7 Nm	15 Nm (Adapter)
Position for normal use	Any	Any
Degree of protection	IP 30	IP 00



Blocks & Holders



DIN / NH Fuses

Universal Support

TRI60

TRI 60 LV HRC (NH) busbar mounting fuse unit

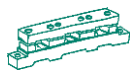
Classification	LV HRC fuse-base to DIN VDE 0636 Part 21		
Specifications	DIN VDE 0636 Part 21, IEC 269-2, DIN 43620		
Sizes	<u>Size 00</u>	<u>Size 1</u>	<u>Size 3</u>
Number of poles	3-pole	3-pole	3-pole
Outgoing to	Top	Bottom	Bottom
Rated uninterrupted current I_u	160 A	250 A	400 A
with fuse-links to DIN VDE 0636 and DIN 43620			
Rated duty	Cont. duty	Cont. duty	Cont. duty
Rated operational voltage U_e	~ 660 (~690) V	~ 660 (~690) V	~660 (~690) V
Rated frequency	45 – 62 Hz	45 – 62 Hz	45 – 62 Hz
Storage temperature	– 40 bis +80 °C	– 40 bis +80 °C	– 40 bis +80 °C
Attachment types/cross-sections and maximum tightening torques			
Screw at outgoing terminal	M8 / 15 Nm	M10 / 38 Nm	M10 / 38 Nm
Clip at outgoing terminal	4 – 70 mm ² / 3 Nm		
Tightening torque, claw-type fixing terminal	6 Nm	20 Nm	20 Nm
Degree of protection	IP 20	IP 00	IP 00

TRI 60 connection system

Classification	Busbar-terminals DIN VDE 0609 Part 1		
Specifications	DIN VDE 0609 Part 1, EN 60999, IEC 999		
Capacity of terminals	1,5 – 16 mm ²	1,5 – 35 mm ²	16 – 120 mm ²
Possible bar heights	5 or 10 mm	5 or 10 mm	5 or 10 mm
Schraubenart	± Schraube M5	M8 6-kant	M10 6-kant
Permissible tightening torque	4 Nm	8 Nm	20 Nm
Heating of terminals	<< 45 K	<< 45 K	<< 45 K



Blocks & Holders

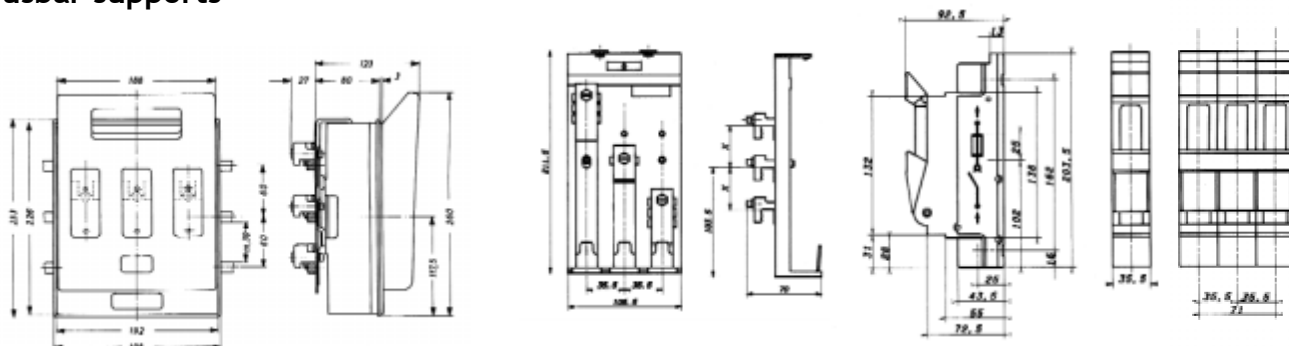


DIN / NH Fuses

Universal Support

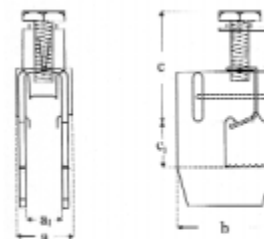
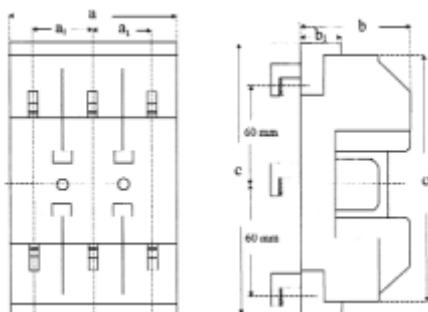
TRI60

Busbar supports



Adapter suitable for NH 00 LINO CUR

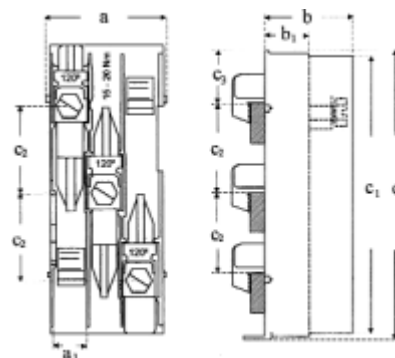
LV HRC (NH) fuse switch-disconnector size 1



Art.-Nr.	q	a ₁	b	b ₁	c	c ₁
8350	99	33	89	32	202	195
8350.2	99	33	89	32	202	195
8351	195	65	110		200	
8351	195	65	110		200	

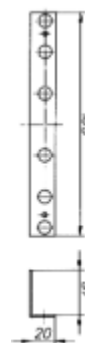
Art.-Nr.	a	a ₁	b	c	c ₁
1760.01016	13,5	7,5	24	28	10
1760.01035	18	10,8	28,5	38	10
1760.01070	20	14	30	42	10
1760.01120	25,5	17	36	55	10
1760.05016	13,5	7,5	24	28	5
1760.05070	20	14	30	42	5
1760.05035	18	10,8	28,5	38	5
1760.05120	25,5	17	36	55	5

NH bus-mounting fuse base, 3-pole



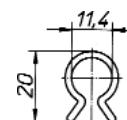
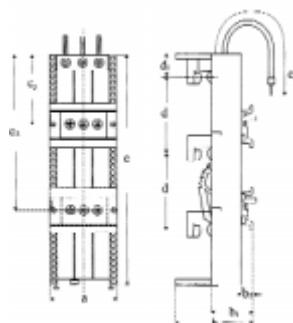
Art.-Nr.	a	a ₁	b	b ₁	c	c ₁	c ₂	c ₃
8355.01	84	21	59	32	200	195	60	35
8355.05	84	21	59	32	200	195	60	35
8358	84		59	32	202	195		35

Universal-Anschlußklemmen



Insulating side cover with screws

Terminal plate, 3-pole



Distance clip, 9 mm

Art.-Nr.	a	a ₁	b ₁	b ₂	c	c ₁	c ₂	c ₃	d	d ₁
3800.211	54	60	32	8,5	182	120	88		60	20
3800.221	54	60	32	8,5	182	120	143	48	60	20
3800.311	54	60	32	8,5	182	120	88		60	20
3800.312	72	60	32	8,5	182	120	88		60	20
3800.313	81	60	32	8,5	182	120	88		60	20
3801.021	54	60	32	8,5	182		143	48	60	20

Adapter without wire-connection