

# MULTIFIX® 60

Covering and Compartmentalizing Material

## BUS BAR SYSTEMS

### COMPONENTS FOR 60MM SYSTEMS



MULTIFIX® 60 is a system for energy distribution comprising a variety of modular combinable components. The energy distribution is carried out via copper bus bars in a 60 mm bus bar system up to 630 A, 400 V AC, 500 V AC, 690 V AC, 45-62 Hz. Short circuit withstand tested to VDE 0660 part 500 and IEC 60439-1.

MULTIFIX® 60 is suitable for triple pole, quadruple pole and quintuple pole applications.

The components of the MULTIFIX® 60 system are mounted directly without drilling. This method offers high flexibility for extension and alteration of existing installations -> reduced installation time.

The MULTIFIX® 60 covering and compartmentalizing system allows touch protected installation without use of a central cover.

## TECHNICAL DATA OVERVIEW

Voltage AC	690 VAC
Ampere Range (A)	2 ... 630 A

## FEATURES & BENEFITS

- For bus bars with width 12 - 30mm and thickness 5 - 10mm
- Touch protection for supporting edge 32mm

## APPLICATIONS

- Panel board builders
- Control system engineering
- Industrial plants
- Heating & air conditioning systems

## STANDARDS

- in accordance with IEC/EN 60439-1 and VDE 0660 part 500



## PRODUCT RANGE



1.001.075

### Compartmentalized conductor frame

Catalog number	Reference number	Design	Weight kg <sup>1</sup>	Package
1.001.075	F1026449	compatible to bus bar carrier 1.000.752 for supporting edge 32 mm (distance washer included)	0.06	10

<sup>1</sup>weight in kg per piece or set including package

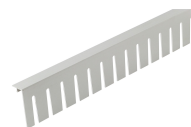


SAS0142

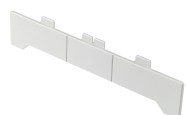
### Insulated covers

Catalog number	Reference number	Design	Weight kg <sup>1</sup>	Package
SAS0142	D222896	insulated cover without slots for supporting edge 32 mm	0.52	5 pieces à 2 meter
SAS0143	T215573	insulated cover with slots for supporting edge 32 mm	0.52	5 pieces à 2 meter
SAS0145	W218128	lateral cover for bus bar carrier attachable to art.no. 1.001.075	0.04	10

<sup>1</sup>weight in kg per piece or set including package



SAS0143



SAS0145



SAS0148

### Cover for spare area

Catalog number	Reference number	Design	Thickness of bus bar	Width of bus bar	Weight kg <sup>1</sup>	Package
SAS0148	D211488	blanking support system for supporting edge 32 mm	-	-	0.05	10 pieces à 1 meter
SAS0149	F214043	cover for spare area	5 mm	12 ... 30 mm	0.68	3

<sup>1</sup>weight in kg per piece or set including package



SAS0149

PRODUCT RANGE



Bus bar covers

Catalog number	Reference number	Thickness of bus bar	Width of bus bar	Weight kg <sup>1</sup>	Package
1.000.931	V218173	5 mm	12 ... 30 mm	0.09	10 pieces à 1 meter
1.000.932	X216128	10 mm	12 ... 30 mm	0.10	10 pieces à 1 meter
<sup>1</sup> weight in kg per piece or set including package					