

# NH Solid Links

## IEC Solid Links UL Neutral Links

NH-solid links have a standard design. The current carrying parts are made of silver plated copper. It's also possible to get nickel plated design on request.

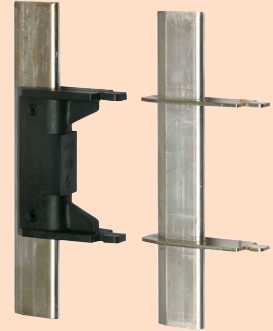
The synthetic parts for insulated tags are in accordance with VDE 0636/DIN 57635.

### Features Benefits

- provides safe and visible means of isolation in a network
- higher current carrying capacity of equipment due to low power dissipation of the copper solid links
- safe and easy operation when used with NH-fuse handle
- can be used as switch disconnecter in combination with NH-switches and NH-bases
- dimensions equivalent to those of NH-fuse links: sizes 000 to 4/4a
- available in two versions: with live and insulated tags

### Applications

- NH-solid links can be used for switching and isolating in conjunction with NH-fuse switch disconnectors and NH-fuse bases instead of NH-fuse links.



### Standards

VDE 0636 / DIN 57635



# NH Solid Links

## Product range

### Solid links with insulated tags

Catalog number	Reference number	Size	Rated current I <sub>n</sub>	Weight	Package
NH00DKNIFESGP	W216058J	000/00	160 A	65.2 g	10
NH0DKNIFESGP	J217082E	0	160 A	96 g	5
NH1DKNIFESGP	Y218107E	1	250 A	134.6 g	5
NH2DKNIFESGP	E200656E	2	400 A	210.7 g	5
NH3DKNIFESGP	J201718E	3	630 A	267.8 g	5



NH00DKNIFESGP



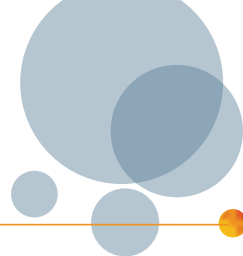
NH1DKNIFESGP



NH2DKNIFESGP



NH3DKNIFESGP



## Product range

### Solid links with live tags

Catalog number	Reference number	Size	Rated current I <sub>n</sub>	Weight	Package
NH00NEUTRAL	Z218269J	000/00	160 A	70 g	10
NH0NEUTRAL	Z219304J	0	160 A	120 g	10
NH1NEUTRAL	A219834E	1	250 A	150 g	5
NH2NEUTRAL	N222514E	2	400 A	220 g	5
NH3NEUTRAL	E223035E	3	630 A	280 g	5
NH4NEUTRAL	L200823A	4	1250 A	656 g	1
NH4ADKNIFE	A214061A	4a	1250 A	601.5 g	1



NH00NEUTRAL



NH0NEUTRAL



NH1NEUTRAL



NH2NEUTRAL



NH3NEUTRAL



NH4NEUTRAL

### Special solid links

Catalog number	Reference number	Size	Rated current I <sub>n</sub>	Weight	Package
22SZSM1	G1037168A	2	630 A	290 g	1
33SZSM1	N1043844A	3	1000 A	390 g	1

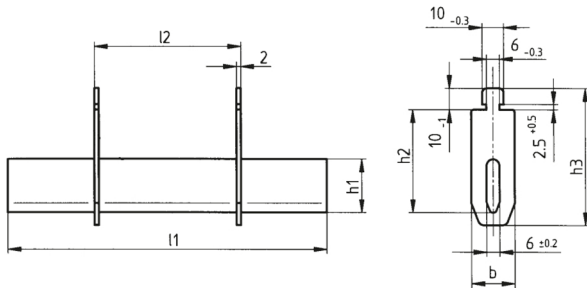


22SZSM1

# NH Solid Links

## Dimensions

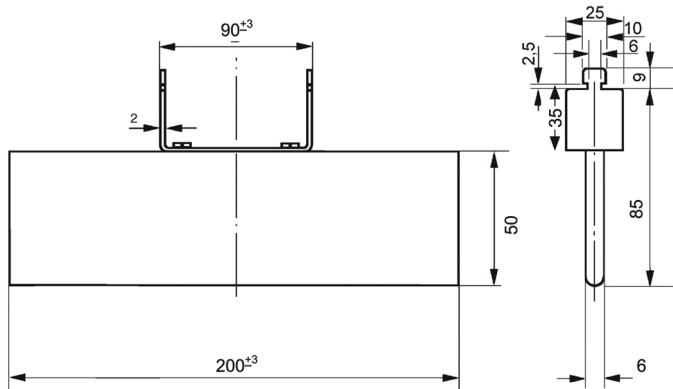
NH-solid links with live tags  
size 00, 1, 2 and 3



Size	nominal current	b	h1	h2 ±0,8	h3	l1 min	l2
00	160 A	17	15	35	49	77	49±1,5
-	160 A	17	15	35	49	122.5	68±1,5/-3
1	250 A	20	20	40	56	132.5	68±2,5
2	400 A	20	25	48	64	147.5	68±2,5
3	630 A	20	32	60	76	147.5	68±2,5

Dimensions in mm

NH-solid links with live tags  
size 4a 1250A/1600A

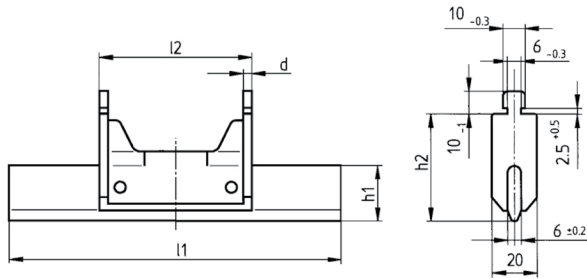


Dimensions in mm

# NH Solid Links

## Dimensions

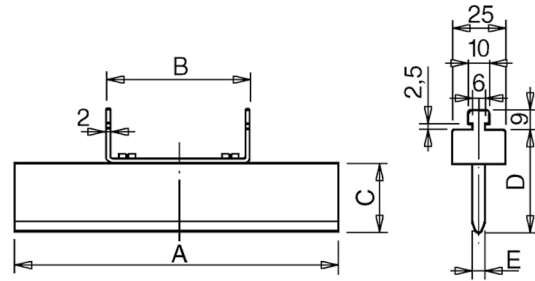
NH-solid links with insulated tags  
size 00, 0, 1, 2 and 3



Size	nominal current	d	h1	h2 ±0,8	l1 min	l2
00	160 A	3	15	35	77	49±1,5
-	160 A	3	15	35	122.5	68±1,5/-3
1	250 A	3	20	40	132.5	68±2,5
2	400 A	3,8	25	48	147.5	68±2,5
3	630 A	3,8	32	60	147.5	68±2,5

Dimensions in mm

NH-special solid links with live tags  
size 2 - 630A and size 3 - 1000A (larger cross section)



Size	nominal current	A	B	C	D	E
2	630 A	150	67	32	48	6
3	1000 A	150	67	50	60	6

Dimensions in mm