

7-Segment LED-Displays

W3525 = Product group; Product group discount W 35 2_

EVERLIGHT 7-Segment LED-Displays

3 Digits

Digit height: 14,22mm

Dimensions: 19x37,7mm

Series: ELT51_

Technical Specifications

Part Nr.	Devices	Colour	WL/I _f [nm/mA]	LI/I _f [μcd/mA]
ELT512SURWA/S53	A	Red	632/20	3500/2
ELT512SYGWA/S53	A	Green	575/20	7500/10
ELT511SURWA/S53	C	Red	632/20	4500/2

A = Common Anode, C = Common Cathode, WL = Peak Emission Wavelength, LI = Typ. Luminous Intensity, I_f = Forward Current

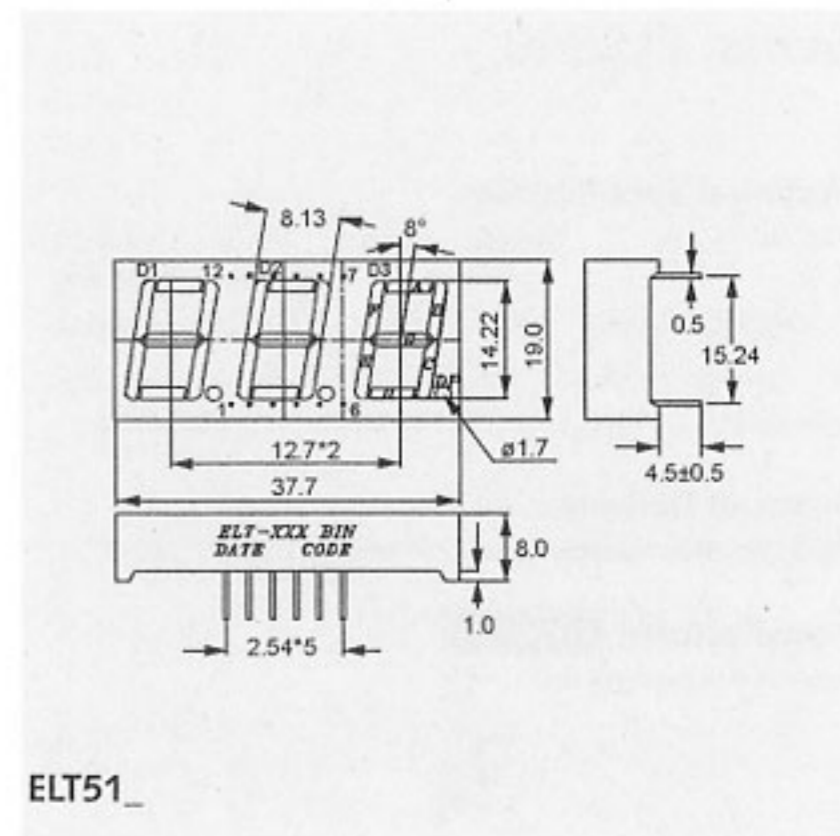
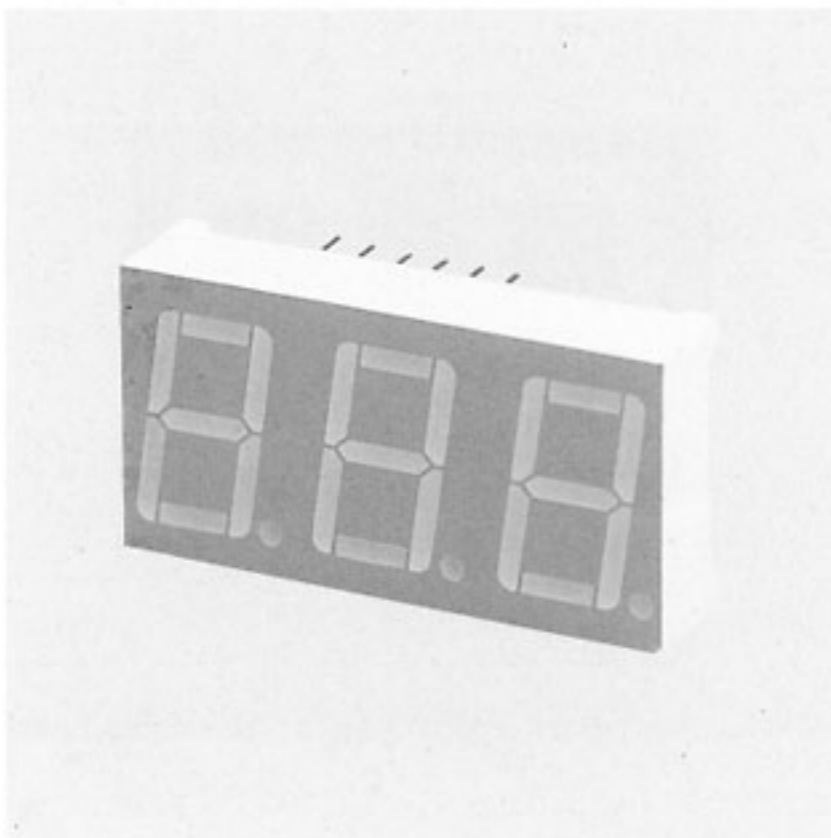
Terms of Delivery

Minimum order quantity: please see price list column "MOQ".

Manufacturer: **EVERLIGHT**

<http://www.everlight.com>

Part Nr.	Part description
ELT512SURWA/S53	3Dig 7Seg 14,22mm CA Red LowCur 3,5mcd
ELT512SYGWA/S53	3Dig 7Seg 14,22mm CA Green 7,5mcd
ELT511SURWA/S53	3Dig 7Seg 14,22mm CC Red LowCur 4,5mcd



ELT51_

W3564 = Product group; Product group discount W 35 6_

LITEON 7-Segment LED-Display

3 Digits

Digit height: 10mm

Dimensions: 12,8x30,02mm

Series: LTC4624_

Technische Daten

Part Nr.	Devices	Colour	WL/I _f [nm/mA]	LI/I _f [μcd/mA]
LTC4624JD	A	Red	650/20	650/1

A = Common Anode, C = Common Cathode, WL = Peak Emission Wavelength, LI = Typ. Luminous Intensity, I_f = Forward Current

Terms of Delivery

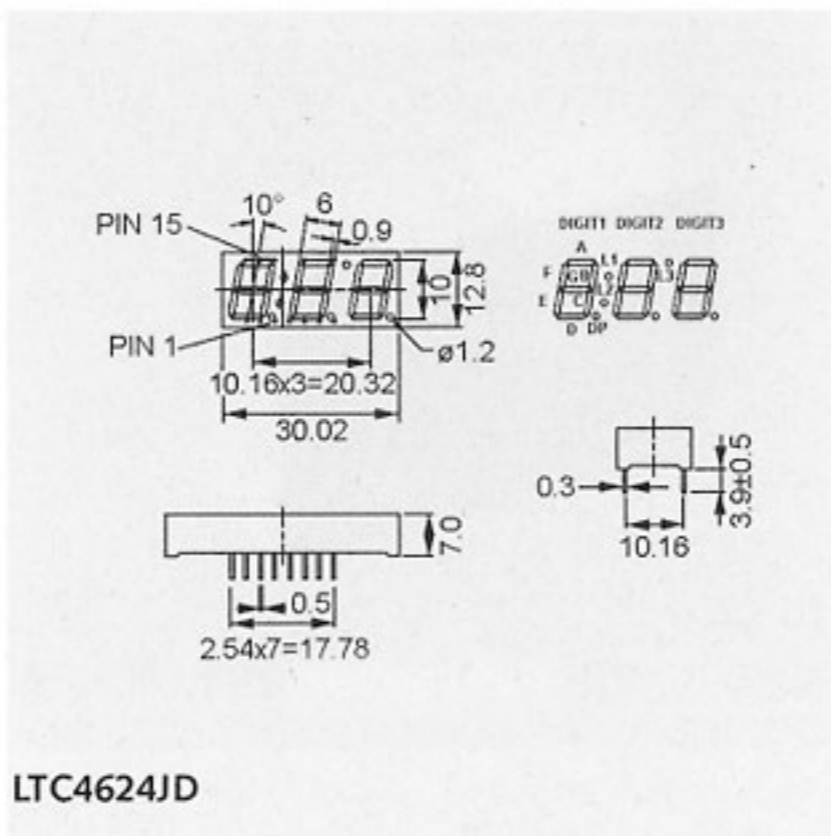
Minimum order quantity: please see price list column "MOQ".

Articles in bold print in stock, other articles available on request.

Manufacturer: **LITEON**

<http://www.liteon.com>

Part Nr.	Part description
LTC4624JD	3Dig 7Seg 10mm CA Red LowCur 650μcd



LTC4624JD