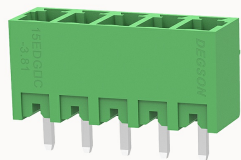


## Overview

### Product information



**15EDGVC-3.81-10030000756**

Pluggable terminal blocks, Rated current: 7A, Rated voltage ( II / 2 ) : 250V, pitch: 3.81mm, Color: green, Contact surface : Tin

### Product advantages

- Universal installation method to ensure a high degree of flexibility in device design
- The plug direction is perpendicular to PCB

### Product certification



## Technical data

### Product drawing

### 3D model

□

### Processing notes

Process

Wave soldering/manual soldering

### Electrical parameters UL

Rated voltage (B)	300V
Rated voltage (D)	300V
Rated current (B)	8A
Rated current (D)	8A

### Electrical parameters IEC

Rated voltage	250V
Rated current	7A

Rated voltage(II/2)	250V
Rated surge voltage(II/2)	2.5KV

#### Item properties

Connection direction	90°
Type of installation	PCB welding
Pin arrangement	Single row in a straight line
Pitch	3.81mm
Number of potentials	5
Pluggable or not	Yes
Number of rows	1

#### Material data

Environmental items	Compliant with REACH/RoHS
Contact material	Copper alloy
Contact zone metal surface	tin-plated
Insulation Materials	PA66
Insulating material group	I
Flammability rating	UL94V-0

#### Mechanical tests

Test Specification	IEC61984/ UL1059
--------------------	------------------

#### Environmental data

Ambient temperature (operation)	-40°C~105°C(depending on derating curve)
---------------------------------	--

#### Accessories

##### Tool

Screwdriver	/
-------------	---

Operating tool	/
----------------	---

**Accessories**

Coding strip	/
Bridge	/
Marking strip	/
Others	15EDG-PWI

**Business data**

Order number	10030000756
Packing unit	200
Minimum order quantity	30
Products weight (without packaging)	0.98