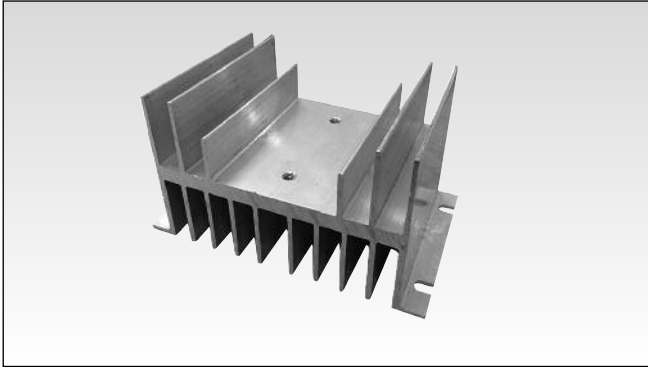


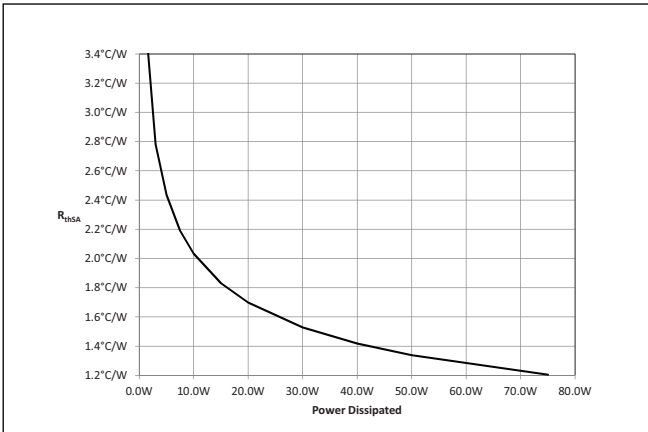
Solid State Relays Accessories, Heatsinks Type RHS10067D

CARLO GAVAZZI



- 1.7 °C/W thermal resistance
- Suitable for mounting of 1x 1-phase SSRs
- Panel mounting
- Dimensions W x H x D: 121 x 76 x 67 mm
- RoHS compliant

Thermal Resistance Curve



Ordering Key

RHS10067D

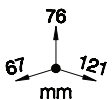
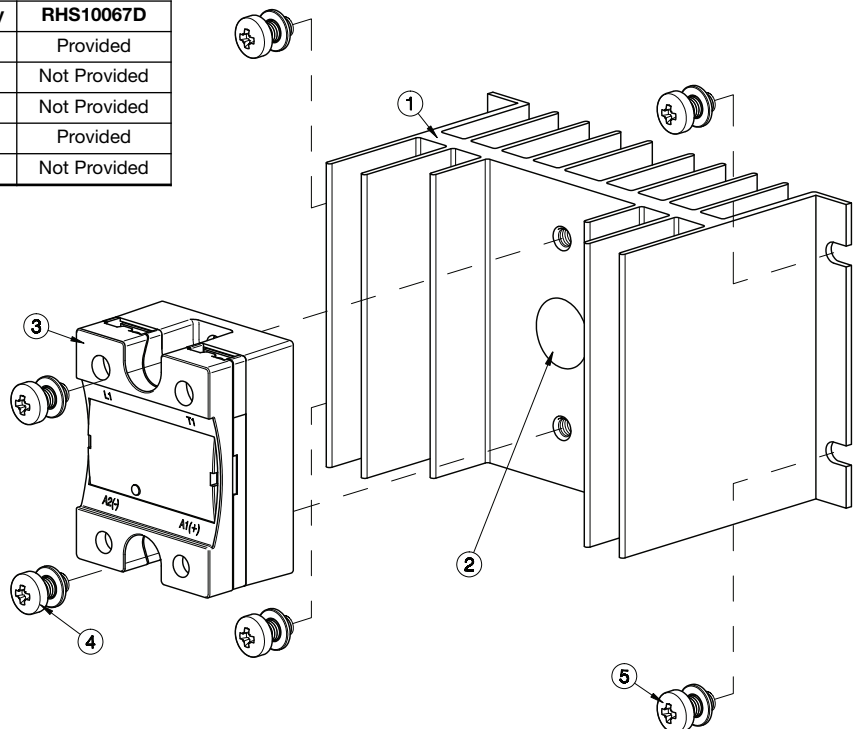
Product Description

Heatsink assembly suitable for mounting of 1x 1-phase solid state relay (SSR).

Suffix H58 added to SSR part no. refers to factory mounted heatsink. Conditions apply. Please ask your Sales representative for further details.

Heatsink Assembly

Components for assembly		Qty	RHS10067D
1	RHS10067D Heatsink Assembly	1	Provided
2	Thermal Compound or Pad	1	Not Provided
3	1-phase SSR 45x59mm	1	Not Provided
4	M5x10mm PZ2 + Washer	2	Provided
5	Panel Mounting Screws Ø5mm max.	4	Not Provided

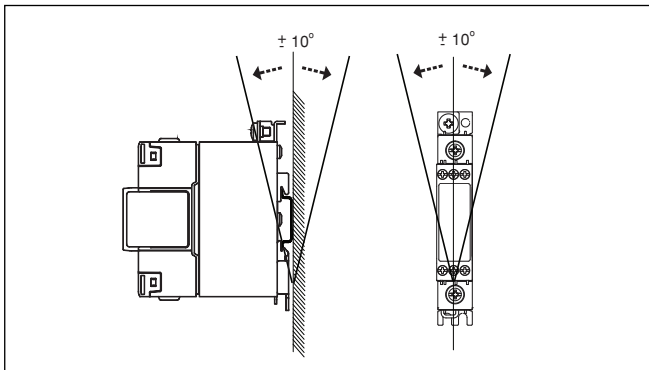


Dimensions including SSR

General Specifications

SSR max. mounting torque	1.5Nm (13.3 lb-in)
Weight (excl. SSR)	approx. 335g
Material	Aluminium
Finish	None
Fan mounting	Not possible

Mounting Position



Installation

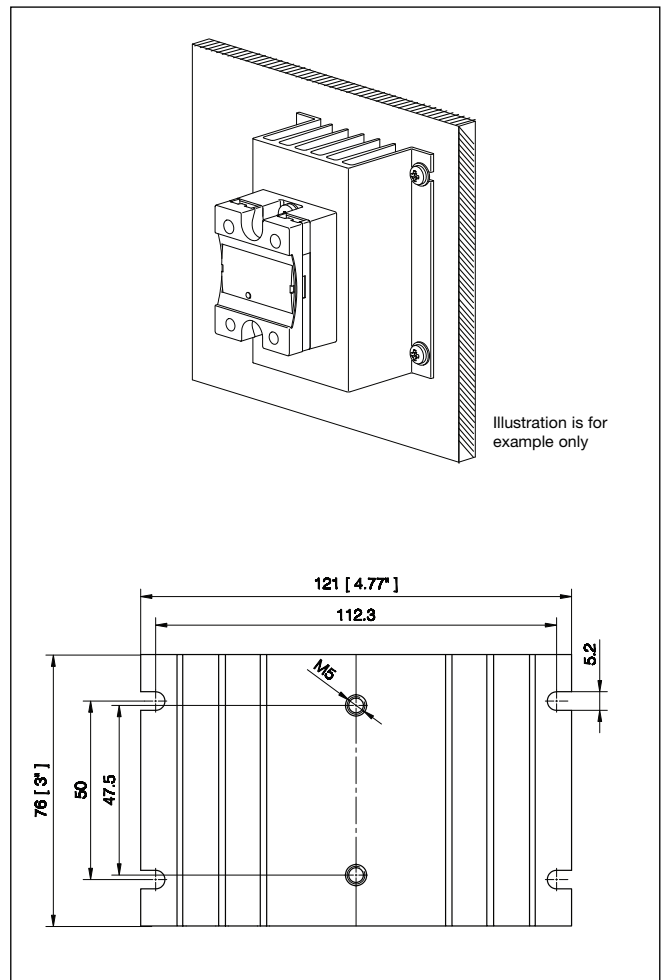


Illustration is for example only

All dimensions in mm.

Recommended Maximum Current Rating (per SSR)

Notes:

- The below recommendations are only valid when the assembly (SSR + heatsink) is mounted as shown in the mounting instructions unless otherwise indicated.
- The indicated ratings are applicable to one SSR, one pole. Please refer to the online selector tool at www.productselection.net for different load currents, surrounding temperatures or multiple units on one heatsink.
- These recommendations are applicable only with the indicated Carlo Gavazzi thermal interface material between SSR and heatsink. In case a different thermal interface is utilised these recommendation may no longer be valid.

Thermal interface = Thermal compound, **HTS02S**

Thermal interface = Thermal pad **KK071CUT**

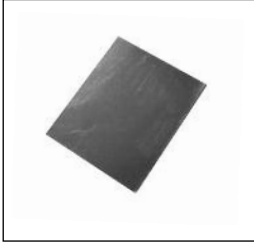
1x 1-phase SSR	Surrounding temperature							
	°C	20	30	40	50	60	70	80
	°F	68	86	104	122	140	158	176
RD..	1	1	1	1	1	1	1	n/a
	5	5	5	5	5	5	5	n/a
RA..L	10	10	10	10	10	10	10	n/a
RA..T	25	24.5	23.5	20.5	18	15	11.5	n/a
RA..	25	25	25	24.5	20.5	16.5	12.5	n/a
	50	40	37	32	26.5	21.5	16	n/a
	90	51.5	48.0	41	34	27	20	n/a
	110	57.5	53.5	45.5	37.5	29.5	22	n/a
RA60..	50	39.5	37	32	27	21.5	16.5	n/a
RA2A..*	25	25	25	22.5	18	13.5	9	n/a
	40	30	28.5	25	19.5	14.5	9.5	n/a
	25M	25	25	22.5	18	13.5	9	n/a
	40M	30.5	29	25	19.5	14.5	9.5	n/a
RS1A..	10	10	10	10	9	7	5	n/a
	25	25	25	25	25	21	14.5	n/a
	40	40	40	37.5	30.5	23	15.5	n/a
RS1A..E	25	21	19.5	17	14.5	12	10	n/a
	40	24.5	23	20	17	14.5	11.5	n/a
RM1A..	25	25	25	25	25	21	14.5	n/a
RM1B..	50	49	45	37.5	30.5	23	15.5	n/a
RM1C..	75	58.5	54	45	36	27	18	n/a
	100	64.5	59.5	49	39	29	19.5	n/a
RM1A60.. RM1B60.. RM1C60.. RM1E60..	50	44	42	37.5	31	23.5	16	n/a
RAM1A.. RAM1B.. RAM1E..	25	25	25	25	25	21	14.5	8
	50	49	45	37.5	30.5	23	15.5	8.5
	75	58.5	54	45	36	27	18	10
	100	58.5	54	45	36	27	18	10
	125	64.5	59.5	49	39	29	19.5	10.5

* per pole

1x 1-phase SSR	Surrounding temperature							
	°C	20	30	40	50	60	70	80
	°F	68	86	104	122	140	158	176
RD..	1	1	1	1	1	1	1	n/a
	5	5	5	5	5	5	5	n/a
RA..L	10	10	10	10	10	10	10	n/a
RA..T	25	22	21	18.5	16	13.5	10.5	n/a
RA..	25	25	25	22.5	19	15.5	11.5	n/a
	50	36	33.5	29	24	19.5	14.5	n/a
	90	44	41	35.5	29.5	23.5	17.5	n/a
	110	49	45.5	39	32.5	25.5	19	n/a
RA60..	50	35.5	33.5	29	24.5	19.5	15	n/a
RA2A..*	25	24.5	23	20.5	18	13.5	9	n/a
	40	27.5	26	23	20	15	10	n/a
	25M	24.5	23	20.5	18	13.5	9	n/a
	40M	28	26.5	23.5	20	15	10	n/a
RS1A..	10	10	10	10	8.5	6.5	5	n/a
	25	25	25	25	23.5	18	12.5	n/a
	40	40	38	31.5	25.5	19.5	13.5	n/a
RS1A..E	25	18.5	17.5	15.5	13	11	9	n/a
	40	21.5	20	17.5	15	12.5	10	n/a
RM1A..	25	25	25	25	23.5	18	12.5	n/a
RM1B..	50	41	38	31.5	25.5	19.5	13.5	n/a
RM1C..	75	47.5	43.5	36.5	29.5	22.5	15.5	n/a
	100	51.5	47.5	39.5	31.5	24	16.5	n/a
RM1A60.. RM1B60.. RM1C60.. RM1E60..	50	39.5	37.5	32	26	20	14	n/a
RAM1A.. RAM1B.. RAM1E..	25	25	25	25	23.5	18	12.5	7
	50	41	38	31.5	25.5	19.5	13.5	7.5
	75	47.5	43.5	36.5	29.5	22.5	15.5	8.5
	100	47.5	43.5	36.5	29.5	22.5	15.5	8.5
	125	51.5	47.5	39.5	31.5	24	16.5	9

Accessories

Thermal Pads



- Ordering key: **KK071CUT**
- Packing qty. 50 pcs.
- Suitable for 1-phase SSRs
- Dimensions: 35 x 43mm

Thermal Compound



- Ordering key: **HTS02S**
- 2ml syringe of silicone based thermal compound

Screw Kits



- Ordering key: **SRWKITM5X10MM**
- M5x10mm PZ2 screws + washers
- Packing qty. 20pcs.
- Suitable for 1-phase series