

IEC Low Voltage General Purpose Protection

Ferrule fuse-links

10x38 aM 400 to 690VAC from 0.16 to 32A

Ferraz Shawmut aM and gG fuse-links cover a wide range of physical sizes and ampere ratings for 400, 500, and 690VAC for protection in electrical distribution circuits and various industrial applications. Most ratings are available in size 8x31 and size 10x38 with an optional indicator, and in size 14x51 and 22x58 with an optional striker to activate an auxiliary contact. All cylindrical fuse-links have ceramic bodies and silver-plated ferrules. Our technology and process was designed to ensure highly reliable technical performance.



Benefits

- Small size
- Safest and most reliable protection system
- High limiting and breaking capacity
- Visual blown fuse indication
- Low power dissipation

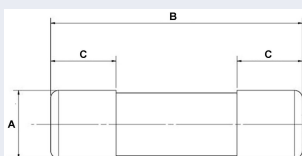
Applications

aM type for protection of motors, transformers and other loads with in-rush currents.

Size	Rated Voltage (V)	Nominal Current (A)	Class	Catalog Number w/o indicator	Reference Number w/o indicator	Catalog Number with indicator	Reference Number with indicator
10x38	500	0.16	aM	FR10AM50V0.16	E214617	-	-
10x38	500	0.25	aM	FR10AM50V0.25	M215130	-	-
10x38	500	0.5	aM	FR10AM50V0.5	W216150	-	-
10x38	500	1	aM	FR10AM50V1	F217171	FR10AM50V1I	X219233
10x38	500	2	aM	FR10AM50V2	H218714	FR10AM50V2I	G222209
10x38	500	4	aM	FR10AM50V4	W219232	FR10AM50V4I	K200753
10x38	500	6	aM	FR10AM50V6	F222208	FR10AM50V6I	K201811
10x38	500	8	aM	FR10AM50V8	Z201295	FR10AM50V8I	Z211553
10x38	500	10	aM	FR10AM50V10	Y211552	FR10AM50V10I	H213102
10x38	500	12	aM	FR10AM50V12	A213601	FR10AM50V12I	D214110
10x38	500	16	aM	FR10AM50V16	F214618	FR10AM50V16I	P215132
10x38	500	20	aM	FR10AM50V20	X216151	FR10AM50V20I	V216655
10x38	400	25	aM	FR10AM40V25	G217172	FR10AM40V25I	L217682
10x38	400	32	aM	FR10AM40V32	J218715	-	-

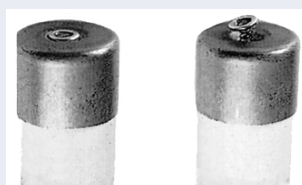
Size	Rated Voltage (V)	Nominal Current (A)	Class	Catalog Number w/o indicator	Reference Number w/o indicator
10x38	690	1	aM	FR10AM69V1	H302779
10x38	690	2	aM	FR10AM69V2	J302780
10x38	690	4	aM	FR10AM69V4	K302781
10x38	690	6	aM	FR10AM69V6	L302782
10x38	690	8	aM	FR10AM69V8	M302783
10x38	690	10	aM	FR10AM69V10	N302784
10x38	690	12	aM	FR10AM69V12	P302785

Dimensions (mm)



Size	A	B	C
10x38	10.3	38	10.5

Blown fuse indicator



Before After

Ratings

400VAC 25 to 32A
 500VAC 0.16 to 20A
 690VAC 1 to 12A
 120kA breaking capacity

Standards & Approvals

IEC 60269-1 & -2

Approved by Lloyd's Register of Shipping and Bureau Veritas

RoHS Compliant



Related products

Fuse-holders: Modulostar® CMS10

Materials: body: ceramic

Materials: contact: silver plated copper

Product weight: 8.3g

Packaging: 10 pieces

IEC Low Voltage General Purpose Protection

Ferrule fuse-links

10x38 aM 400 to 690VAC from 0.16 to 32A



Size	Rated Voltage (V)	Nominal Current (A)	Breaking Capacity @ Rated Voltage (kA)	Watts Loss @ 100% In (W)
10x38	500	0.16	120	0.07
10x38	500	0.25	120	0.08
10x38	500	0.5	120	0.07
10x38	500	1	120	0.1
10x38	500	2	120	0.14
10x38	500	4	120	0.28
10x38	500	6	120	0.38
10x38	500	8	120	0.55
10x38	500	10	120	0.62
10x38	500	12	120	0.82
10x38	500	16	120	0.87
10x38	500	20	120	1.05
10x38	400	25	120	1.2
10x38	400	32	120	1.8

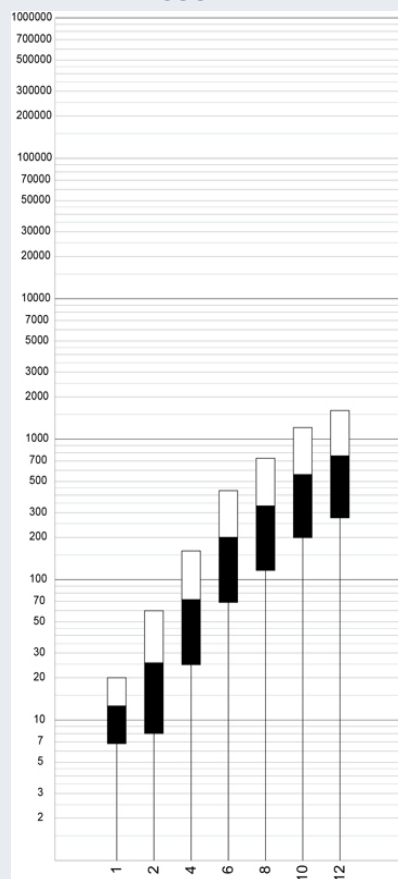
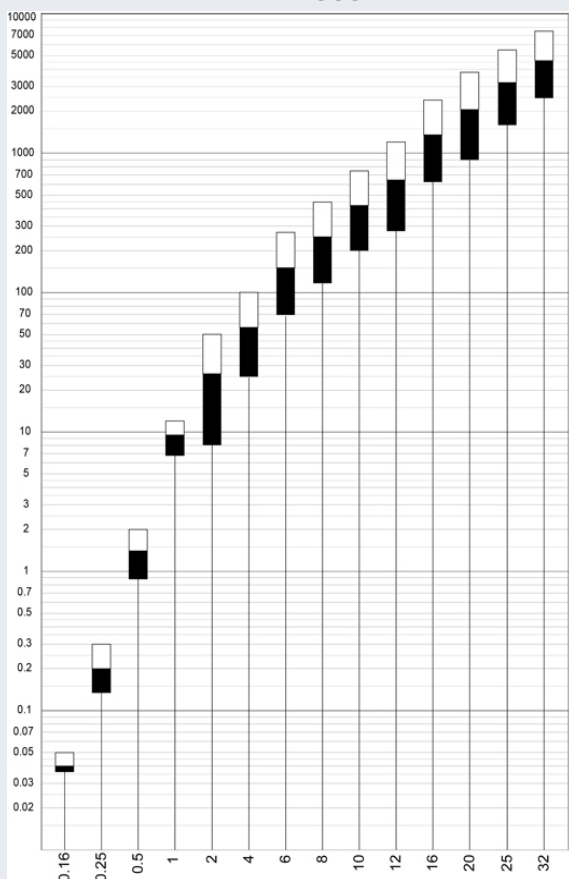
Size	Rated Voltage (V)	Nominal Current (A)	Breaking Capacity @ Rated Voltage (kA)	Watts Loss @ 100% In (W)
10x38	690	1	120	0.1
10x38	690	2	120	0.14
10x38	690	4	120	0.28
10x38	690	6	120	0.38
10x38	690	8	120	0.55
10x38	690	10	120	0.62
10x38	690	12	120	0.78

Characteristics I²t

500V

690V

Prearcing and Clearing I²t (A²s)



Nominal Current (A)

IEC Low Voltage General Purpose Protection

Ferrule fuse-links

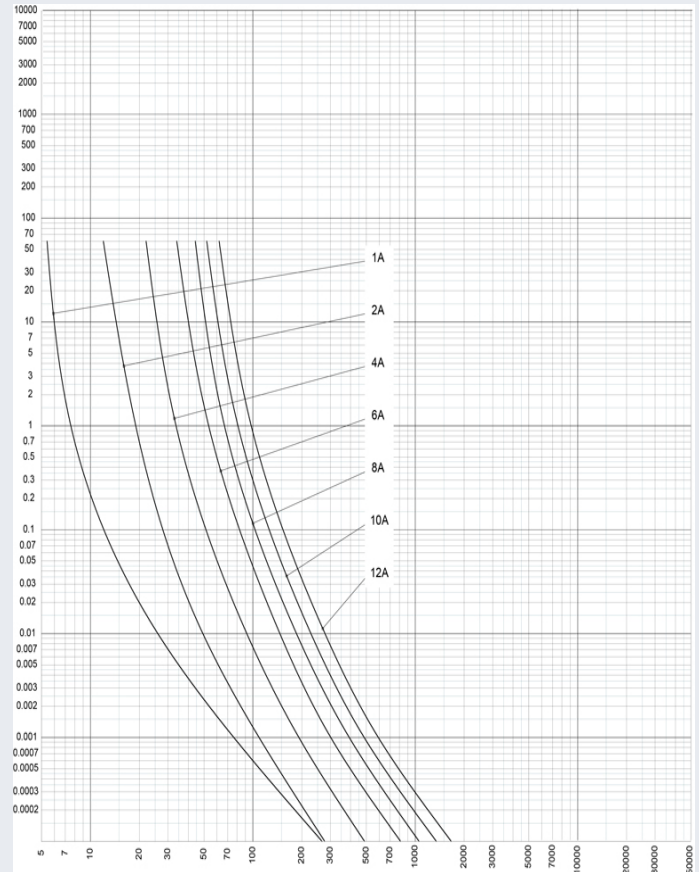
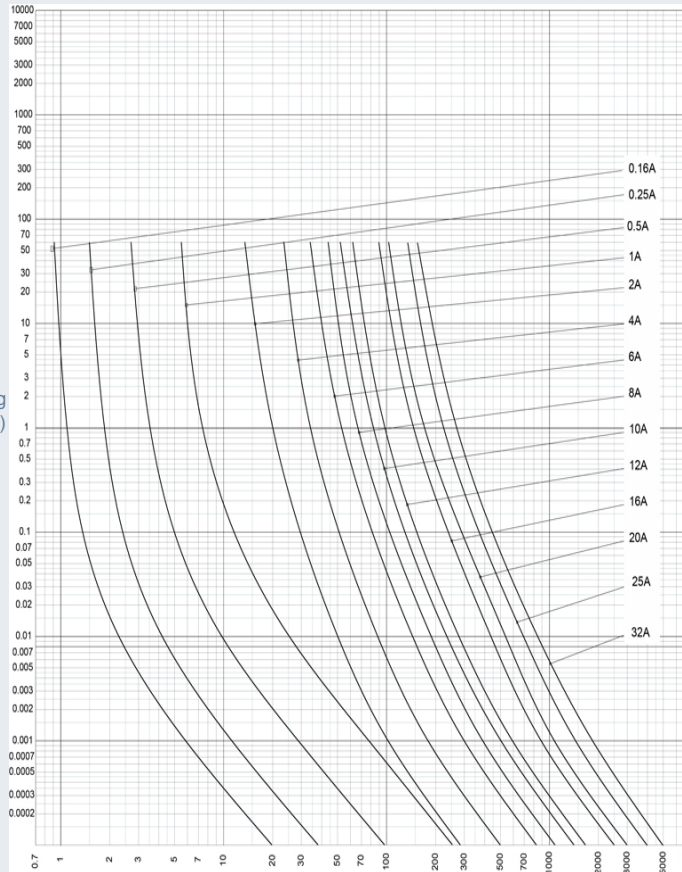
10x38 aM 400 to 690VAC from 0.16 to 32A



Time current characteristics

500V

690V

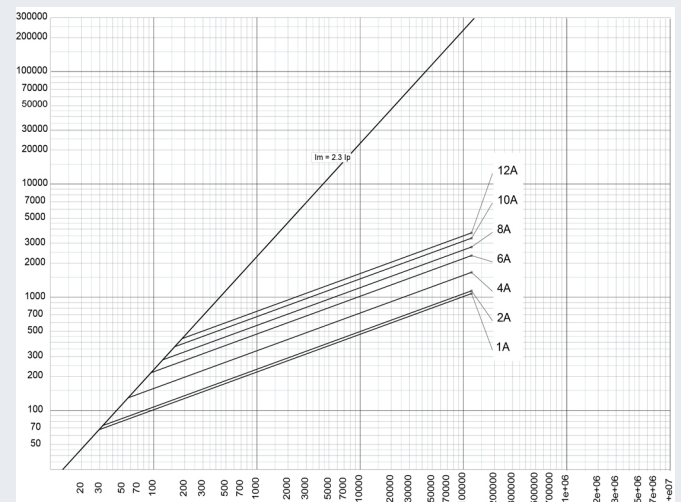
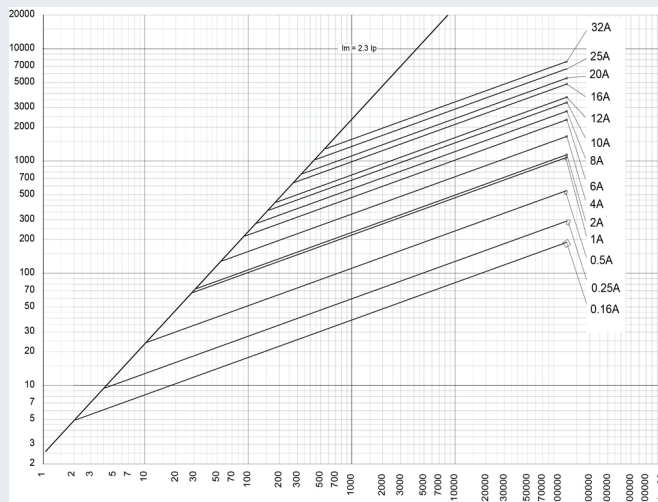


rms value of prearc current (A) \pm 10%

Peak let thru characteristics

500V

690V



50 Hz rms symmetrical prospective current (I_p) (A)