

# IEC Low Voltage General Purpose Protection Bases for NH fuse-links

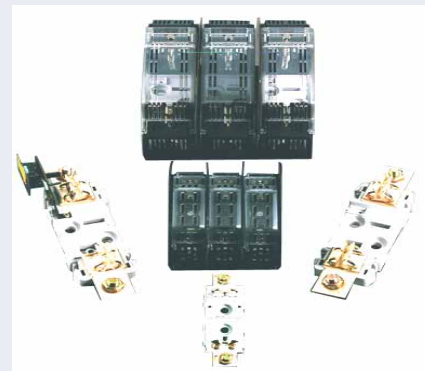
## Plastic and Ceramic Bases

NH fuse-bases are available for delivery in single-pole and three-pole designs and can be closely mounted in parallel rows. Each three-pole base is supplied with two phase-partition walls. NH-ISO plugon covers which clip onto the contact springs can also be supplied for these bases.

Ceramic fuse-bases in sizes 00 to 3 are provided with a single-part steatite base, while size 4 has a metal baseplate with 2 ceramic bases. Plastic fuse-bases have a single-part plastic base.

The stable silver-plated contact springs are made of electrolytic copper and formed from one piece. Separate springing is provided by highly resilient captive steel springs, making the contact invulnerable to high thermal stress.

Size 4 NH fuse-bases are designed for size 4 fuse-links with 8mm contact blades. Size 4a fuse-bases are designed for size 4a fuse-links with 6mm contact blades.



### Benefits

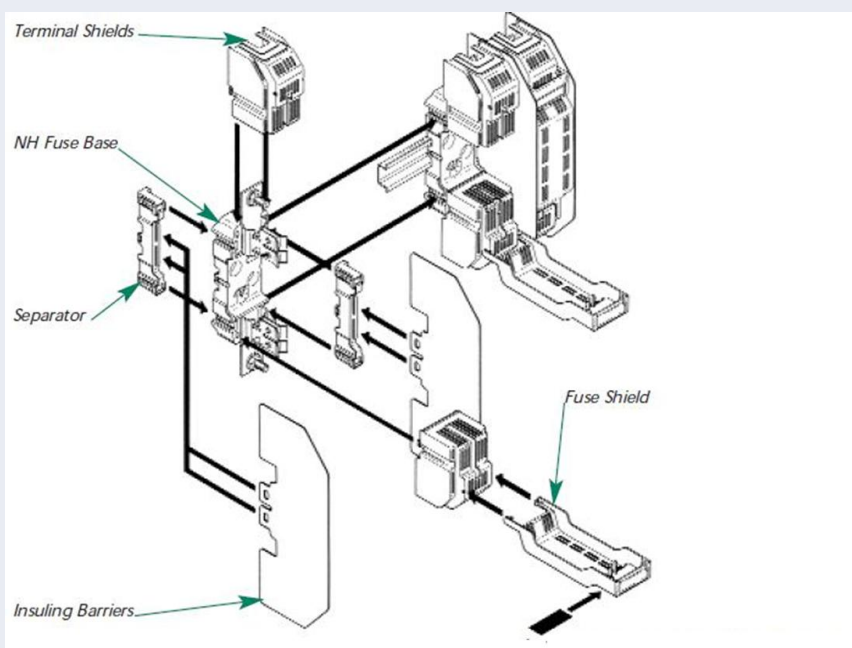
- Polyamide or ceramic insulating bases
- Silver plated contacts
- High-pressure spring contacts (see picture)
- Screw or rail (only for Plastic) mounting types available

### Applications

NH fuse-bases are designed for fuse-links with rated voltages up to 690VAC and 440VDC.



### Connection detail



### Ratings

Rated voltage: up to 690VAC and 440VDC

### Approvals

#### Plastic bases

IEC 60269 Compliance  
DIN VDE 0636 part 21, 201  
DIN 43620 (dimensions)

#### Ceramic bases

IEC 60269-2 Compliance  
DIN VDE0636  
DIN 43620  
NFC 63210, 63211, 60200



# IEC Low Voltage General Purpose Protection

## Bases for NH fuse-links

### Plastic and Ceramic Bases



#### Plastic bases

##### Technical characteristics

Thermoplastic base highly temperature resistant and self-extinguishable

Multipolar bases possible by direct linkage in 00 size and with separator accessory in sizes 0, 1, 2 and 3

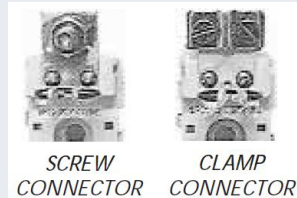
Variety of options for protecting active parts through use of accessories: separating plates, separator, cover shields and fuse cover

Dual cable-connection system on 00 size: by screw or clamp

Connecting cable: 50mm

Fixation on rail or by screw

##### Connection



F215170



W229122

#### Size 00 Type EP\* - Fuse-bases for NH00 fuse-links

Power acceptance: 12W

No of Poles	Connector	Mounting type	Previous reference	Catalog Number	Reference Number	Pack.
1	Screw	Screw	41002	BB001EP	F215170	3
1	Screw	Rail	42002	BB001EPR	R216192	3
1	Clamp	Screw	41102	BB00EPBT	T219805	3
1	Clamp	Rail	42102	BB001EPBR	F200795	3
2	Screw	Screw	41012	BB002EP	A217212	2
2	Screw	Rail	42012	BB002EPR	F218758	2
2	Clamp	Screw	41112	BB002EPB	D200793	2
2	Clamp	Rail	42112	BB002EPBR	T211594	2
3	Screw	Screw	41014	BB003EPVBLOC	W229122	1
3	Screw	Rail	42014	BB003EPRBLOC	V229121	1
3	Clamp	Screw	41114	BB003EPB	W201338	1
3	Clamp	Rail	42114	BB003EPBR	C212108	1
4	Screw	Screw	41019	BB004EP	S219275	1
4	Screw	Rail	42019	BB004EPR	Z223007	1
4	Clamp	Screw	41119	BB004EPB	R211592	1
4	Clamp	Rail	42119	BB004EPBR	M215682	1

\* EP bases have square contacts.



T229120

#### Size 00 Type TP - Indirect touch protection fuse-bases

No of Poles	Connector	Mounting type	Previous reference	Catalog Number	Reference Number	Pack.
1	Screw	Screw	41003	BB001FS	M216694	3
1	Screw	Rail	42003	BB001RFS	S218240	3
3	Screw	Screw	41015	BB003SFSBLOC	T229120	1
3	Screw	Rail	42015	BB003RFSBLOC	S229119	1

# IEC Low Voltage General Purpose Protection

## Bases for NH fuse-links

### Plastic and Ceramic Bases



#### Plastic bases



S216193

#### Size 0 Type EP\* - Fuse-bases for NH0 fuse-links

Power acceptance: 25W

No of Poles	Mounting type	Previous reference	Catalog Number	Reference Number	Pack.
1	Screw	41202	BB01EP	B213142	3
1	Din rail	42202	BB01EPR	S216193	3
2	Screw	41212	BB02EP	C214661	2
2	Din rail	42212	BB02EPR	P216696	2
3	Screw	41214	BB03EP	G215171	1
3	Din rail	42214	BB03EPR	C217214	1
4	Screw	41219	BB04EP	Q216191	1
4	Din rail	42219	BB04EPR	J217726	1

\* EP bases have square contacts.

#### Size 0 Type PP - Fuse-bases for NH0 fuse-links

No of Poles	Mounting type	Previous reference	Catalog Number	Reference Number	Pack.
1	Screw	41302	BB01PP	N216695	3
1	Din rail	42302	BB01PPR	T218241	3
2	Screw	41312	BB02PP	B217213	2
2	Din rail	42312	BB02PPR	G218759	2
3	Screw	41314	BB03PP	G217724	1
3	Din rail	42314	BB03PPR	W219278	1
4	Screw	41319	BB04PP	R218239	1
4	Din rail	42319	BB04PPR	H222486	1



F222484

#### Size 1 Type PP - Fuse-bases for NH1 fuse-links

Power acceptance: 32W

No of Poles	Mounting type	Previous reference	Catalog Number	Reference Number	Pack.
1	Screw	41402	BB11PP	E218757	3
1	Din rail	42402	BB11PPR	A223008	3
2	Screw	41412	BB12PP	F222484	2
2	Din rail	42412	BB12PPR	G200796	2
3	Screw	41414	BB13PP	Y223006	1
3	Din rail	42414	BB13PPR	Y201340	1
4	Screw	41419	BB14PP	X201339	1
4	Din rail	42419	BB14PPR	H201855	1

# IEC Low Voltage General Purpose Protection

## Bases for NH fuse-links

### Plastic and Ceramic Bases



#### Plastic bases



#### Size 2 Type PP - Fuse-bases for NH2 fuse-links

Power acceptance: 45W

No of Poles	Mounting type	Previous reference	Catalog Number	Reference Number	Pack.
1	Screw	41502	BB21PP	F201853	3
1	Din rail	42502	BB21PPR	E211075	3
2	Screw	41512	BB22PP	S211593	2
2	Din rail	42512	BB22PPR	V211595	2
3	Screw	41514	BB23PP	B212107	1
3	Din rail	42514	BB23PPR	D212109	1
4	Screw	41519	BB24PP	C213143	1
4	Din rail	42519	BB24PPR	R212627	1

#### Size 3 Type PP - Fuse-bases for NH3 fuse-links

Power acceptance: 60W

No of Poles	Mounting type	Previous reference	Catalog Number	Reference Number	Pack.
1	Screw	41602	BB31PP	W213643	3
1	Din rail	42602	BB31PPR	X213644	3
2	Screw	41612	BB32PP	D214662	2
2	Din rail	42612	BB32PPR	B214154	2
3	Screw	41614	BB33PP	H215172	1
3	Din rail	42614	BB33PPR	F214664	1
4	Screw	41619	BB34PP	L215681	1
4	Din rail	42619	BB34PPR	K215174	1

#### Size 4 - Fuse-base for NH4 fuse-links

No of poles	Mounting type	Previous reference	Catalog number	Reference number	Pack.
1	Screw	40014	BB41P	W223004	1



#### Fuse-bases 690V for HRC fuse-links NH with striker

Size	Nominal Current (A)	Previous reference	Catalog Number	Reference Number	Pack.
0	160	42906	BB01PPMS	T216194	1
1	250	42908	BB11PPMS	Q216697	1
2	400	42910	BB21PPMS	D217215	1
3	630	42912	BB31PPMS	H218760	1

*For fuse-links with striker*

*Rail or screw fixing*

# IEC Low Voltage General Purpose Protection Bases for NH fuse-links

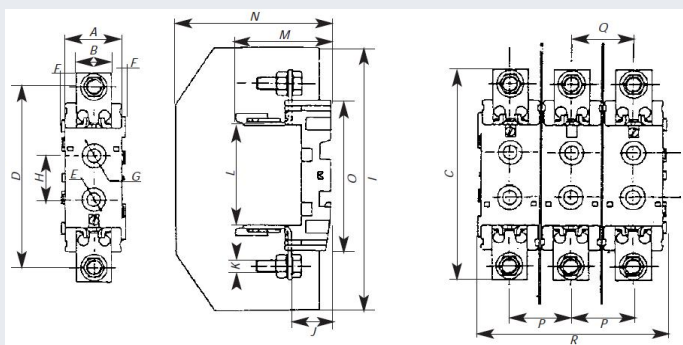
## Plastic and Ceramic Bases



### Plastic bases

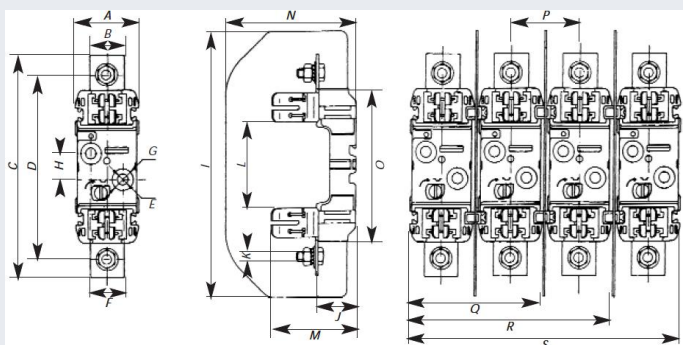
#### Dimensions (mm)

#### Size 00



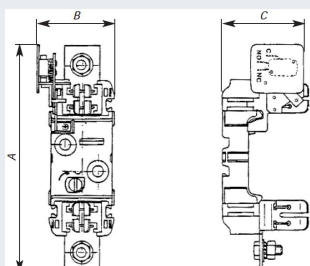
A	B	C	D	E	F	G	H	I	J	K	L	M	N	O	P	Q	R
32	20	117	100	8	2	14	25	145	21.5	8	56	52	85	84	34	1	104

#### Sizes 0 to 4



Size	A	B	C	D	E	F	G	H	I	J	K	L	M	N	O	P	Q	R	S
0-EP	46	20	168	150.5	7.5	-	14.5	25	185	29	M8	74	59	95	122	48.5	94	142	190
0-PP	46	25	168	150.5	7.5	-	14.5	25	185	29	M8	75	61	95	122	48.5	94	142	190
1-PP	60	32	209	176	10.5	30	20.5	25	250	35	M10	81	71	122.5	146	65.5	125.5	191	256.5
2-PP	60	35	225	201	10.5	30	20.5	25	250	35	M10	81	89	122.5	146	65.5	125.5	191	256.5
3-PP	60	40	241	210	10.5	30	20.5	25	270	35	M12	81	103	142.5	146	81.5	141.5	223	304.5
4	85	50	301	254	14	-	-	30	-	43	M16	101	133	-	200	-	-	-	-

#### Fuse-bases 690V for HRC fuse-links NH with striker



Size	A	B	C
NH-0	192	64	66
NH-1	213	93	77
NH-2	222	73	82
NH-3	233	80	83

# IEC Low Voltage General Purpose Protection

## Bases for NH fuse-links

### Plastic and Ceramic Bases



#### Plastic bases

#### Accessories



#### Insulating barriers for Polyamide NH fuse-bases

Size	Previous reference	Catalog Number	Reference Number	Pack.
00	44502	BB00CL	W212654	2
0	44504	BB0CL	Z213669	2
1-2	44510	BB1-2PPCL	J214690	2
3	44512	BB3PPCL	Q215708	2
D0/3*	84392	BB001BLOC	B233865	2

\*Reference number V229121 and W229122 only



#### Separators

Size	Previous reference	Catalog Number	Reference Number	Pack.
0	44604	BBPAK0	V216724	2
1-2	44610	BBPAK1-2	N217753	2
3	44612	BBPAK3	M218787	2



#### Fuse Shields

Size	Previous reference	Catalog Number	Reference Number	Pack.
00	44802	BB00COV	G213170	3
0	44804	BB0COV	F214181	3
1-2	44810	BB1-2COV	K214691	3
3	44812	BB3COV	R215709	3



#### Terminal Shields

Size	Previous reference	Catalog Number	Reference Number	Pack.
00	44702	BB00TS	M222513	6
0	44704	BB0TS	K200822	6
1	44708	BB1TS	L201881	6
2	44710	BB2TS	Y211621	6
3	44712	BB3TS	X212655	6

# IEC Low Voltage General Purpose Protection

## Bases for NH fuse-links

### Plastic and Ceramic Bases



#### Plastic bases

#### Accessories



#### One Cable - Terminal for NH Bases

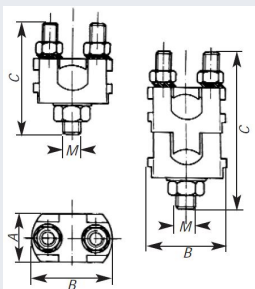
Size	Cable size min (mm)	Cable size max (mm)	Previous reference	Catalog Number	Reference Number	Pack.
00	6	50	45421	BORNEABF50/60	Q217755	60
00-0	10	95	45423	BORNEABF95	A218270	50
1-2	16	150	45425	BORNEABF150	N218788	30
3	50	240	45427	BORNEABF240	A219305	15



#### Two Cables - Terminal for NH Bases

Size	Cable 1 size min (mm)	Cable 1 size max (mm)	Cable 2 size min (mm)	Cable 2 size max (mm)	Previous reference	Catalog Number	Reference Number	Pack.
00	6	50	6	50	45431	BORNEABF50D	B219835	60
00-0	10	95	10	95	45433	BORNEABF95D	P222515	30
1-2	25	150	16	150	45435	BORNEABF150D	F223036	20
3	95	240	50	240	45437	BORNEABF240D	B201366	5

#### Dimensions (mm)



Reference number	A	B	C	M
Q217755	18	26	34	6
A218270	24	35	52	8
N218788	26	41	58	10
A219305	36	53	68	12
B219835	18	26	39	6
P222515	24	35	82	8
F223036	26	41	84	10
B201366	36	53	98	12

#### Microswitch (sold separately)

Microswitch for NH fuse-bases in polyamide material (screw or rail fixing).

Microswitch operates when:

- fuse melts
- no fuse-link

Operating voltage: 250VAC

Terminal size: 6.3x0.8mm

Nominal Current: 10A

If you are interested in ordering microswitch and NH fuse-base separately:  
T218241 + X219279 same size as T216194 (size 0)



Size	Nominal Current (A)	Previous reference	Catalog Number	Reference Number	Pack.
0	160	44206	MSBB01	X219279	1
1	250	44208	MSBB11	Y219809	1
2	400	44210	MSBB21	J222487	1
3	630	44212	MSBB31	B223009	1

# IEC Low Voltage General Purpose Protection Bases for NH fuse-links Plastic and Ceramic Bases



## Plastic bases

Complete references for Indirect touch protection fuse-bases (no microswitch possible)

### Fixation on rail

Size	No of Poles	Catalog Number	Reference Number	Pack.
00	1	BB01RFS	S218240	3
00	3	BB003RFSBLOC	S229119	1
0	1	BB01EPRFS	G226717	3
0	3	BB03EPRFS	J226719	1
1	1	BB11PPRFS	P226724	3
1	3	BB13PPRFS	Q226725	1
2	1	BB21PPRFS	R226726	3
2	3	BB23PPRFS	S226727	1
3	1	BB31PPRFS	T226728	3
3	3	BB33PPRFS	V226729	1

### Fixation by screw

Size	No of Poles	Catalog Number	Reference Number	Pack.
00	1	BB001FS	M216694	3
00	3	BB003SFSBLOC	T229120	1
0	1	BB01PPFS	X226708	3
0	3	BB03PPFS	Z226710	1
1	1	BB11FS	V219806	3
1	3	BB13PP	B226712	1
2	1	BB21PPFS	C226713	3
2	3	BB23PPFS	D226714	1
3	1	BB31PPFS	E226715	3
3	3	BB33PPFS	F226716	1
4	1	BB4A1	E222161	1



# IEC Low Voltage General Purpose Protection

## Bases for NH fuse-links

### Plastic and Ceramic Bases



#### Ceramic bases

##### Technical characteristics

Insulating base of ceramic material

Types E have square contacts.

Type EB have cable connection by clamp.

Types P have pincer contacts.

Type PP fuse-bases with clip contacts.

Size 1 fuse-bases accept fuse-links sizes 0 and 1.

Size 2 fuse-bases accept fuse-links sizes 1 and 2.

Size 3 fuse-bases accept fuse-links sizes 1, 2 and 3.

Size 4 has a special nut to assure contact pressure.



#### Single pole fuse-bases

Size	Nominal Current (A)	Previous reference	Catalog Number	Reference Number	Pack.
00-E	160	40002	BB001E	Z217211	12
00-EB	160	40003	EB001	E217722	12
0-E	160	40004	BB01E	P218237	4
0-P	160	40006	BB01P	C218755	4
1-P	250	40008	BB11P	R219274	3
2-P	400	40010	BB12P	S219804	3
3-P	630	40012	BB31P	D222482	3
4-P	1250	40014	BB41P	W223004	1



#### Three pole fuse-bases

Size	Nominal Current (A)	Previous reference	Catalog Number	Reference Number	Pack.
00-E	160	40502	BB003E	D201851	3
00-EB	160	40503	BB003EB	A211071	3
0-E	160	40504	BB03E	Q211591	1
0-P	160	40506	BB03P	Z212105	1
1-P	250	40508	BB13P	T213641	1
2-P	400	40510	BB23P	Y214151	1
3-P	630	40512	BB33P	B214660	1

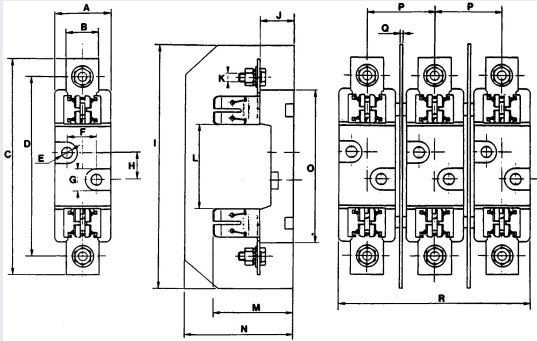
# IEC Low Voltage General Purpose Protection Bases for NH fuse-links

## Plastic and Ceramic Bases



### Ceramic bases

#### Dimensions (mm)



Size	A	B	C	D	E	F	G	H	I	J	K	L	M	N	O	P	Q	R
00-E, EB	33	20	118.5	100	8	-	14.5	25	145	21.5	M8	55	52.5	80	84	34	1	101
0-E	32	20	269	151	8.5	-	14	25	185	29	M8	72	60	85	120	47	2	126
0-P	32	25	166	150	8.5	-	14	25	185	29	M8	74	60	85	120	47	2	126
1-P	55	32	210	175	11	30	22	25	250	35	M10	84	71	100	148	62	2	177
2-P	55	35	227	200	11	30	22	25	250	35	M10	84	89	100	148	69	2	190
3-P	55	40	241	210	11	30	22	25	250	35	M12	84	103	127	148	82	2	213
4-P	85	50	300	252	14	45	-	30	-	38	M16	101	134	-	-	-	-	-

### Accessories

#### Insulating barriers for Ceramic NH Fuse-bases



Size	Nominal Current (A)	Previous reference	Catalog Number	Reference Number	Pack.
00	100	45102	NH00CERAMWALLP	A201365	10
0	160	45104	NH0CERAMWALLP	M201882	10
1-2	400	45110	NH12CERAMWALLP	K211103	4
3	630	45112	NH3CERAMWALLP	Z211622	2



Size	Nominal Current (A)	Previous reference	Catalog Number	Reference Number	Pack.
00	100	45202	NH00CERAMWALLE	G214182	10
0	160	45204	NH0CERAMWALLE	L214692	10
1-2	400	45210	NH12CERAMWALLE	Q215202	4
3	630	45212	NH3CERAMWALLE	S215710	2
4	1250	45214	NH4CERAMWALLE	Y216221	2