

FLEXPECT-LABELLING



FlexXpect is a modular Vision platform. In combination with the powerful Xpectia-hardware, it takes you into a new dimension of specialisation.

FlexXpect-Labeling has been designed to deliver tailored functionality for inspection of labels and packages.

Features of FlexXpect-Labeling:

- Strong OCR/OCV
- Code reading (Barcode, Datamatrix)
- 360° inspections of bottles
- Real colour processing items
- High resolution
- Easy & intuitive configuration



Label unwrapping from bottles for inspection of premium beverages:

- Acquire images from up to 4x cameras
- Compensate the distortion
- Identify the overlapping areas
- Stitch the images together



FLEXPECT-LABELLING

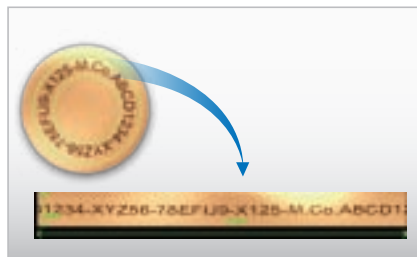
Powerful image processing tools for labelling:

- OCR/OCV
- Barcode/Datamatrix
- Pattern and edge tools
- Real colour inspection
- High resolution to detect minute defects

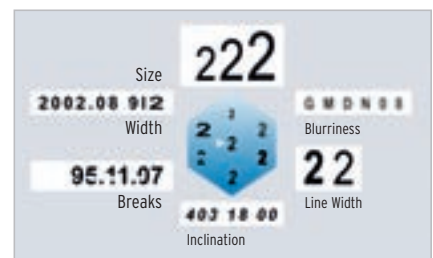
Date/Batch code verification (OCR/OCV)



Polar transformation of round strings



Strong OCR/OCV



FlexXpect-Labeling utilizes the latest OCR algorithms to reliably read character data printed by ink-Jet, thermal transfer or laser marking. Even when print varies in size, width, spacing, inclination and form, FlexXpect-Labeling can verify the code.

Position and defect inspection



Produce aesthetically perfect products is a key point. FlexXpect-Labeling offers a suite of image processing tools to inspect the label for position and defects.

Reading different codes at a time



Two or more different codes in the same field of view can be read by utilizing a high resolution camera. This function helps to reduce the inspection time.

High speed code reading



Item description	Order code
FlexXpect-Labeling software module	FLEXXPECT-LABELLING

Note: FlexXpect software modules require Xpectia/FZW hardware. This is not part of the item and needs to be ordered independently.