

# IEC Low Voltage General Purpose Protection

## NH fuse-links Plain blades

### Sizes 000 to 4a aM 690VAC from 2 to 1000A

The NH system is classified among plug-in fuse systems and is composed of:

- fuse-base, (possibly including terminal covers and phase barriers)
- fuse-link with blade contact
- fuse-link replacement device (LV HRC fuse puller)

Since the design of this system cannot guarantee non-interchangeability of rated current, it must be handled by a qualified professional.



#### Benefits

Dimensions according to DIN 43 620  
Parts 1 to 4 standard

Non-isolated gripping lugs

Double indicator

Lead free contact blades

0% cadmium

#### Applications

aM: Partial purpose, motor circuit protection

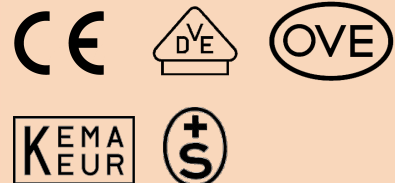


#### Approvals

DIN 57636 Part 201

VDE 0636 Part 201

IEC 60269-1 and -2



#### Related products

Fuse-holders: NH fuse bases

NH fuse switch disconnectors

# IEC Low Voltage General Purpose Protection

## NH fuse-links Plain blades

### Sizes 000 to 4a aM 690VAC from 2 to 1000A



#### Sizes 000 to 1

Size	Rated Voltage (V)	Nominal Current (A)	Watts Loss @ 100% In (W)	Previous reference	Catalog Number	Reference Number	Weight (g)	Pack.
000	690	2	0.1	2C613.	NH000AM69V2	P227851	130	3
000	690	4	0.2	2C619.	NH000AM69V4	Q227852	130	3
000	690	6	0.3	2C623.	NH000AM69V6	R227853	130	3
000	690	10	0.5	2C631.	NH000AM69V10	S227854	130	3
000	690	16	0.7	2C635.	NH000AM69V16	T227855	130	3
000	690	20	0.9	2C637.	NH000AM69V20	V227856	130	3
000	690	25	1.2	2C639.	NH000AM69V25	W227857	130	3
000	690	32	1.5	2C643.	NH000AM69V32	X227858	130	3
000	690	35	1.6	2C645.	NH000AM69V35	Y227859	130	3
000	690	40	1.8	2C647.	NH000AM69V40	Z227860	130	3
000	690	50	2.3	2C651.	NH000AM69V50	A227861	130	3
000	690	63	2.9	2C655.	NH000AM69V63	B227862	130	3
00	690	50	2.3	2C751.	NH00AM69V50	D227864	200	3
00	690	63	2.9	2C755.	NH00AM69V63	E227865	200	3
00	690	80	3.6	2C759.	NH00AM69V80	F227866	200	3
00	690	100	5.2	2C763.	NH00AM69V100	G227867	200	3
00	690	125	6.4	2C765.	NH00AM69V125	H227868	200	3
0	690	6	0.3	2C023.	NH0AM69V6	K227870	260	3
0	690	10	0.5	2C031.	NH0AM69V10	L227871	260	3
0	690	16	0.8	2C035.	NH0AM69V16	M227872	260	3
0	690	20	1	2C037.	NH0AM69V20	N227873	260	3
0	690	25	1.3	2C039.	NH0AM69V25	P227874	260	3
0	690	32	1.6	2C043.	NH0AM69V32	Q227875	260	3
0	690	35	1.7	2C045.	NH0AM69V35	R227876	260	3
0	690	40	2	2C047.	NH0AM69V40	S227877	260	3
0	690	50	2.8	2C051.	NH0AM69V50	T227878	260	3
0	690	63	3.4	2C055.	NH0AM69V63	V227879	260	3
0	690	80	4.9	2C059.	NH0AM69V80	W227880	260	3
0	690	100	6	2C063.	NH0AM69V100	X227881	260	3
0	690	125	7.9	2C065.	NH0AM69V125	Y227882	260	3
0	690	160	10.5	2C069.	NH0AM69V160	Z227883	260	3
1	690	16	1	2C135.	NH1AM69V16	B227885	430	3
1	690	20	1.2	2C137.	NH1AM69V20	C227886	430	3
1	690	25	1.4	2C139.	NH1AM69V25	D227887	430	3
1	690	32	1.9	2C143.	NH1AM69V32	E227888	430	3
1	690	35	2	2C145.	NH1AM69V35	F227889	430	3
1	690	40	2.3	2C147.	NH1AM69V40	G227890	430	3
1	690	50	2.9	2C151.	NH1AM69V50	H227891	430	3
1	690	63	3.6	2C155.	NH1AM69V63	J227892	430	3
1	690	80	4.6	2C159.	NH1AM69V80	K227893	430	3
1	690	100	5.8	2C163.	NH1AM69V100	L227894	430	3
1	690	125	7.5	2C165.	NH1AM69V125	M227895	430	3
1	690	160	10.4	2C169.	NH1AM69V160	N227896	430	3
1	690	200	14.2	2C171.	NH1AM69V200	P227897	430	3
1	690	224	15.8	2C173.	NH1AM69V224	Q227898	430	3
1	690	250	17.5	2C175.	NH1AM69V250	R227899	430	3

# IEC Low Voltage General Purpose Protection

## NH fuse-links Plain blades

### Sizes 000 to 4a aM 690VAC from 2 to 1000A



#### Sizes 2 to 3

Size	Rated Voltage (V)	Nominal Current (A)	Watts Loss @ 100% In (W)	Previous reference	Catalog Number	Reference Number	Weight (g)	Pack.
2	690	35	1.8	2C245.	NH2AM69V35	L227963	640	3
2	690	40	2.1	2C247.	NH2AM69V40	M227964	640	3
2	690	50	2.7	2C251.	NH2AM69V50	N227965	640	3
2	690	63	3.4	2C255.	NH2AM69V63	P227966	640	3
2	690	80	4.4	2C259.	NH2AM69V80	Q227967	640	3
2	690	100	5.5	2C263.	NH2AM69V100	R227968	640	3
2	690	125	6.4	2C265.	NH2AM69V125	S227969	640	3
2	690	160	9.3	2C269.	NH2AM69V160	T227970	640	3
2	690	200	11.3	2C271.	NH2AM69V200	V227971	640	3
2	690	224	12.2	2C273.	NH2AM69V224	W227972	640	3
2	690	250	16.8	2C275.	NH2AM69V250	X227973	640	3
2	690	300	21	2C277.	NH2AM69V300	Y227974	640	3
2	690	315	23.1	2C279.	NH2AM69V315	Z227975	640	3
2	690	355	26.4	2C281.	NH2AM69V355	A227976	640	3
2	690	400	29.7	2C283.	NH2AM69V400	B227977	640	3
3	690	250	14.6	2C375.	NH3AM69V250	D227979	1050	1
3	690	300	21	2C377.	NH3AM69V300	E227980	1050	1
3	690	315	21	2C379.	NH3AM69V315	F227981	1050	1
3	690	355	23.3	2C381.	NH3AM69V355	G227982	1050	1
3	690	400	29.1	2C383.	NH3AM69V400	H227983	1050	1
3	690	425	29.1	2C385.	NH3AM69V425	J227984	1050	1
3	690	450	34	2C386.	NH3AM69V450	K227985	1050	1
3	690	500	42	2C387.	NH3AM69V500	L227986	1050	1

#### Size 4 - With screw contact

Size	Rated Voltage (V)	Nominal Current (A)	Watts Loss @ 100% In (W)	Previous reference	Catalog Number	Reference Number	Weight (g)	Pack.
4	690	400*	26	8004.40056	NH4AM69V400-8	Q227990	2000	1
4	690	500*	38	8004.50056	NH4AM69V500-8	R227991	2000	1
4	690	630*	50	8004.63056	NH4AM69V630-8**	S227992	1750	1
4	690	800*	65	8004.80056	NH4AM69V800-8**	T227993	1750	1
4	690	1000*	80	8004.10056	NH4AM69V1000-8	V227994	2000	1

#### Size 4a - With contact blades for NH-bottom size 4a with swivel unit

Size	Rated Voltage (V)	Nominal Current (A)	Watts Loss @ 100% In (W)	Previous reference	Catalog Number	Reference Number	Weight (g)	Pack.
4a	690	500*	38	8014.50056	NH4AAM69V500-8	X227996	1950	1
4a	690	630*	50	8014.63056	NH4AAM69V630-8	Y227997	1950	1
4a	690	800*	65	8014.80056	NH4AAM69V800-8	A227999	1950	1
4a	690	1000*	80	8014.10056	NH4AAM69V1000-8	B228000	1950	1

\*With trip indicator on top

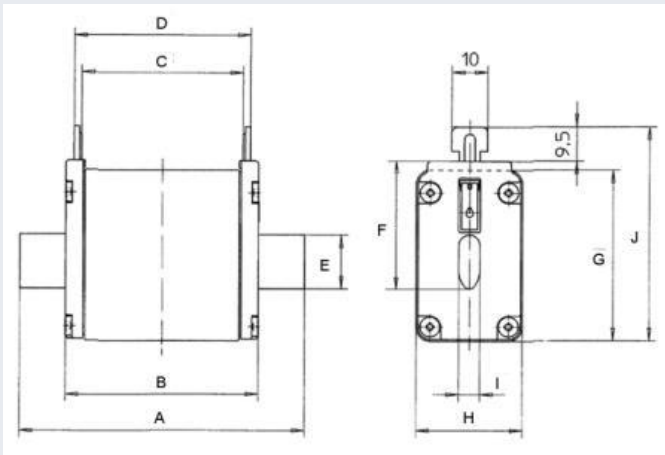
# IEC Low Voltage General Purpose Protection

## NH fuse-links Plain blades

Sizes 000 to 4a aM 690VAC from 2 to 1000A



### Dimensions (mm)



Size	A	B	C	D	E	F	G	H	I	J
000	79	52	45.5	49.5	15	35	40.5	20.8	6	52.5
00	79	52.8	45	50	15	35	47.5	29.5	6	59.5
0	125	66.8	61	66	15	35	47.5	29.5	6	59.5
1	135	70.8	63	68	20	40	52.5	39.5	6	64.5
2	150	72.3	63	68	26	48	60	51	6	72
3	150	72.3	63	63	33	60	74	70	6	86
4	200	85	62	68	49	86	108	90	8	117.5
4a	200	85	84	90	49	86	108	90	6	117.5

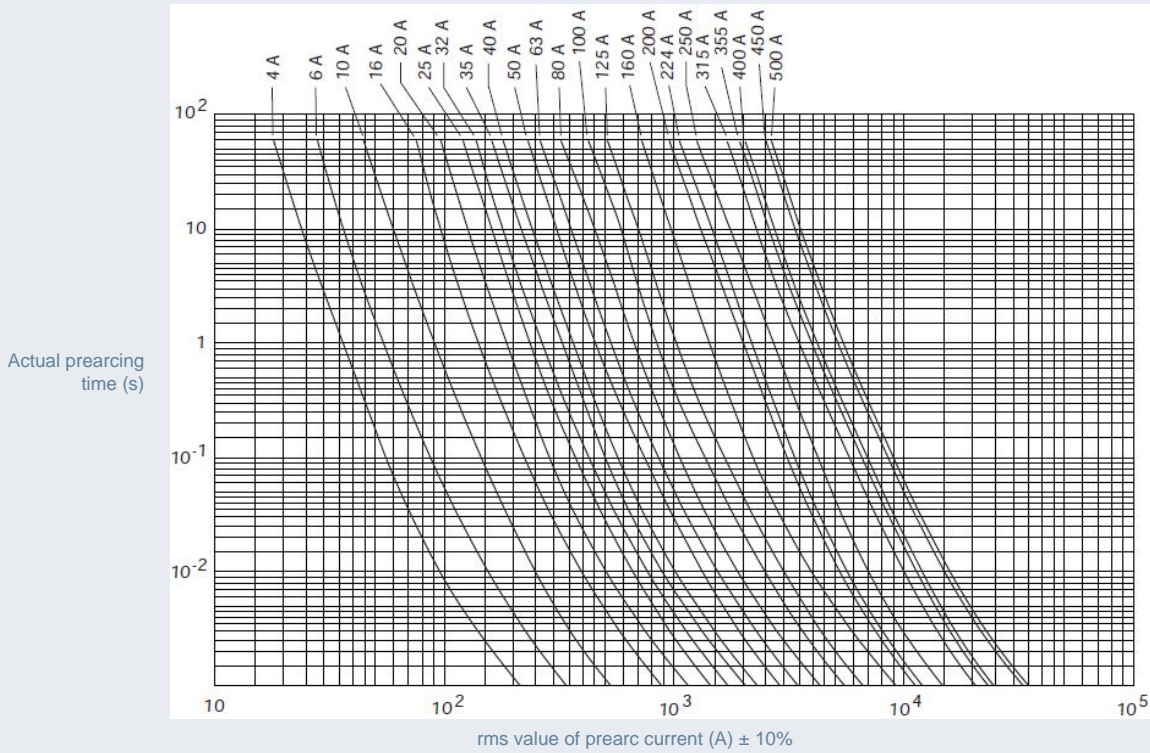
# IEC Low Voltage General Purpose Protection

## NH fuse-links Plain blades

### Sizes 000 to 4a aM 690VAC from 2 to 1000A



Time current characteristics



Characteristics I<sup>2</sup>t

fichier n'existe pas

Preaming and Clearing I<sup>2</sup>t (A<sup>2</sup>s)

Peak let thru characteristics

Maximum peak let thru current (A)

