

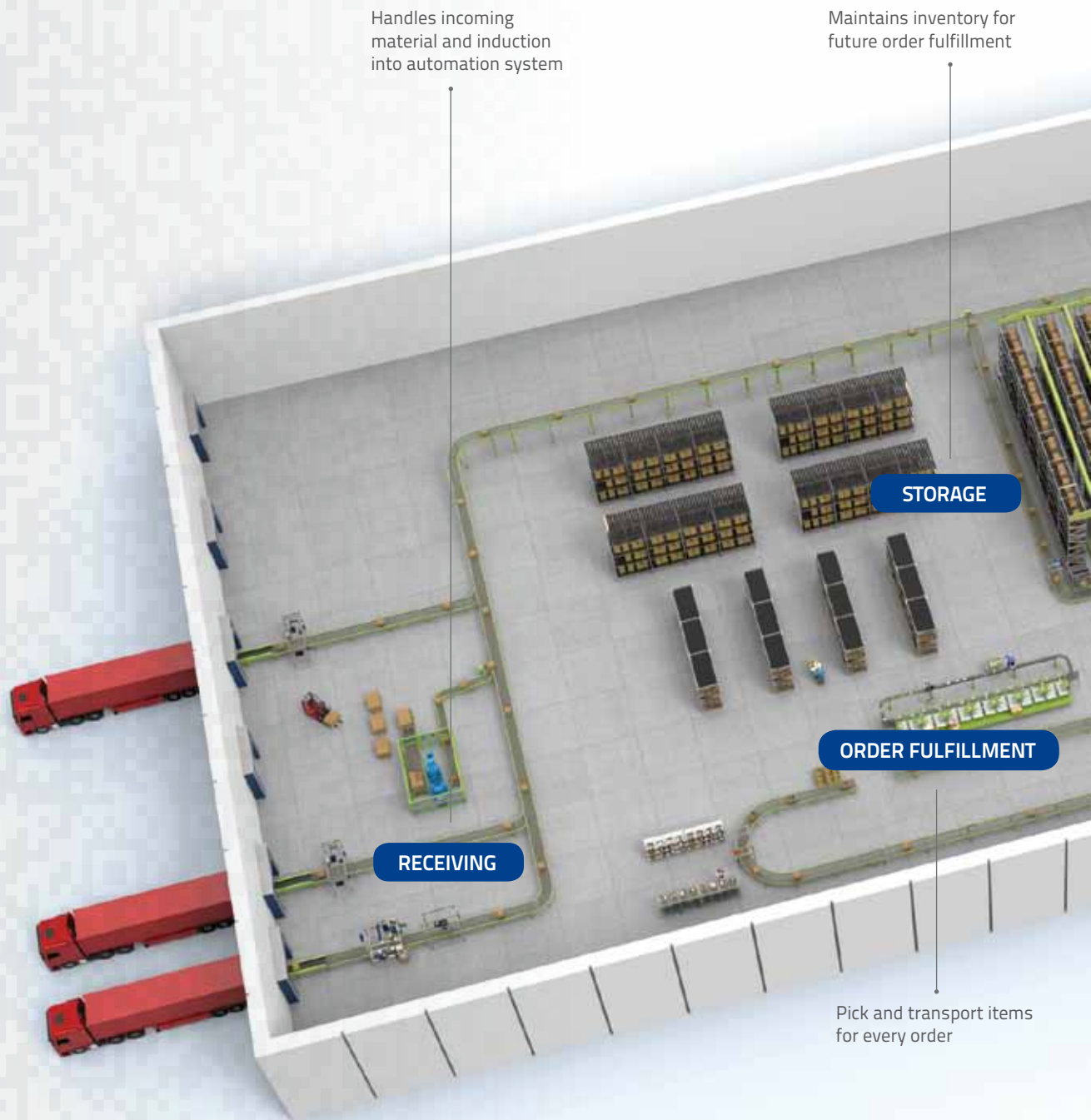
INDUSTRY GUIDE



>Distribution
Center

>Solutions for
efficient distribution

DISTRIBUTION CENTER



Handles incoming material and induction into automation system

Maintains inventory for future order fulfillment

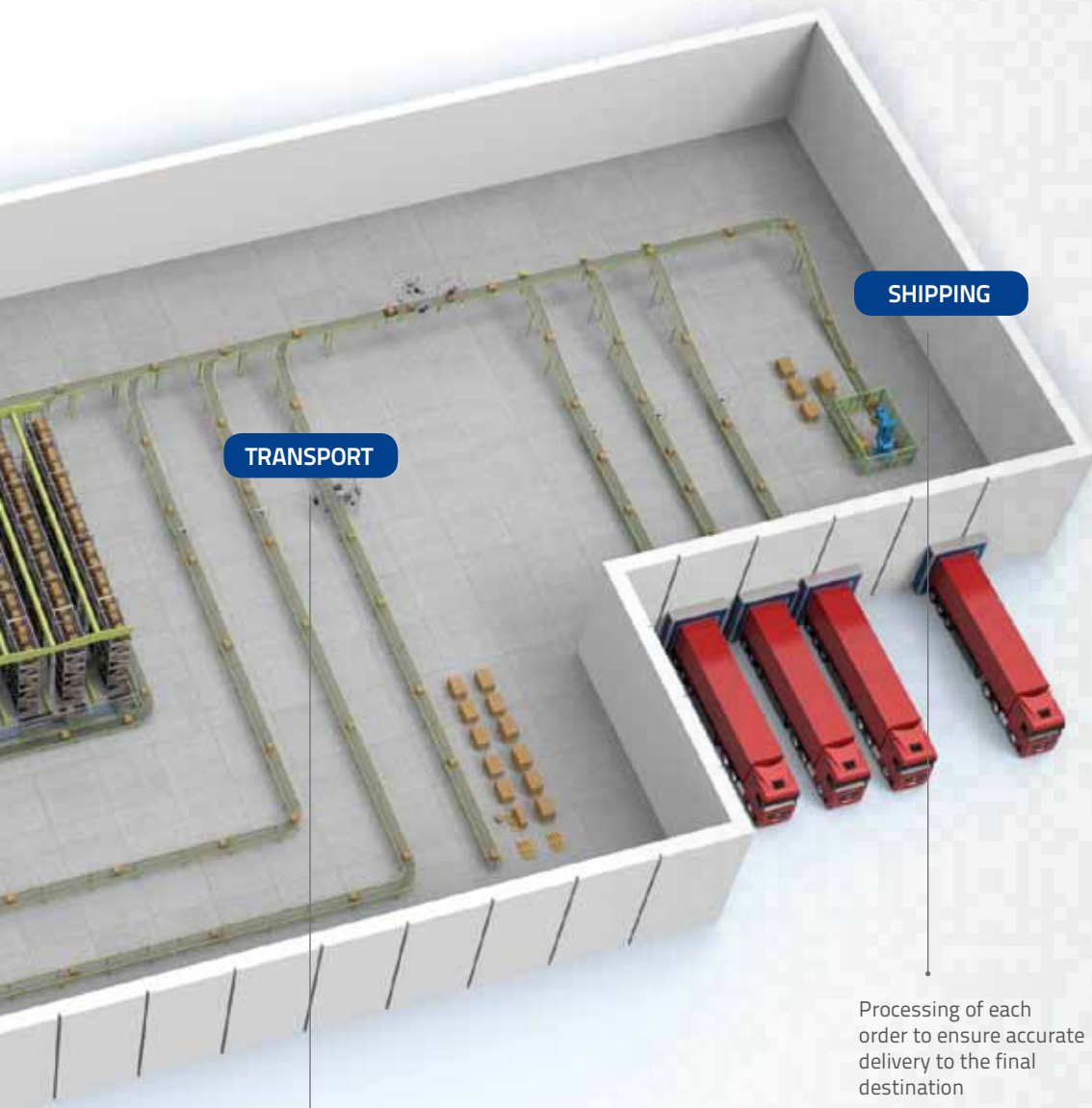
STORAGE

ORDER FULFILLMENT

RECEIVING

Pick and transport items for every order

Datalogic offers the most extensive solution portfolio for improving processes within any distribution center. The automation of a distribution center can provide substantial benefits and significant labor savings. All stages of material handling have the potential for increased efficiency; from the Receiving Area, where implementing an automated cross-docking process



TRANSPORT

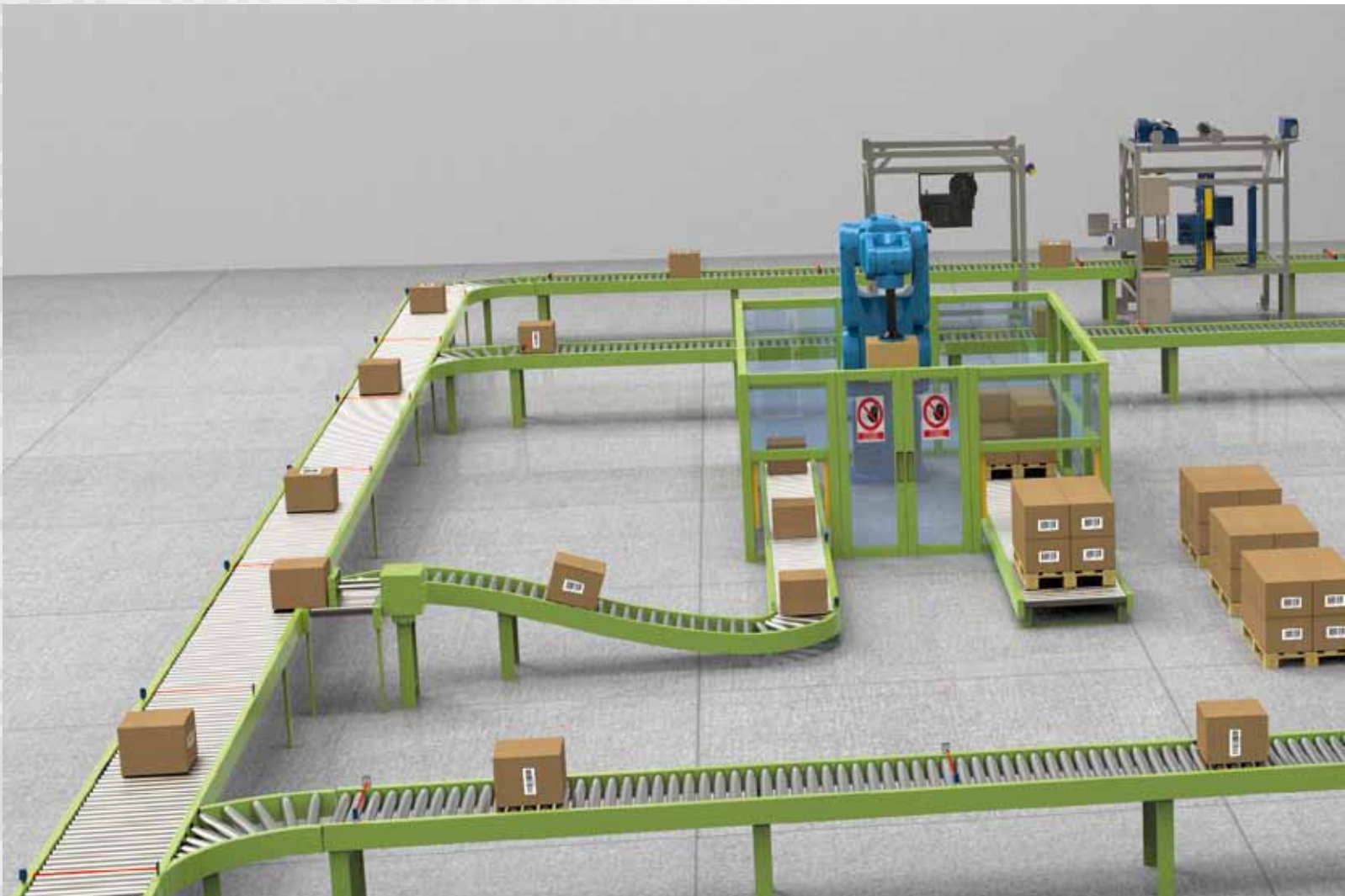
SHIPPING

Move material quickly and accurately throughout the distribution center

Processing of each order to ensure accurate delivery to the final destination

can bypass storage and inventory entirely; to the Shipping Area, where integrated manifesting systems ensure the lowest cost shipping carriers are used. Inside the four walls of a distribution center, automated storage and order fulfillment systems can deliver substantial operating savings, while providing improved accuracy and a safer operating environment.

RECEIVING



DETECTION



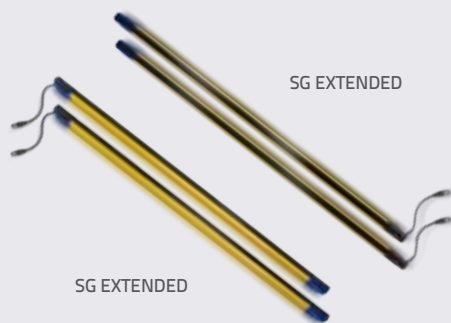
S300

S3Z

S3Z PRESENCE SENSOR
Detect items on unloading conveyors.

S300 PRESENCE
Detect cartons being unpacked by robotic de-palletizers.

PROTECTION



SG EXTENDED

SG EXTENDED

SG EXTENDED SAFETY LIGHT CURTAINS
Protect fingers, hands and bodies from Label Print & Apply Systems.

SG EXTENDED SAFETY LIGHT CURTAINS
Prevent Operator ingress for full protection around robotic de-palletizing area.

ID TRACK AND TRACE



NVS9000™

DS8100N

AV6010

DX8200N

DS8100N, DX8200, MATRIX 450, AV6010, NVS9000
Read vendor bar codes from all sides of incoming containers.

DS4800, AL5010
Capture incoming pallet bar codes, from forklifts, in all environments.

Automated receiving stations reduce labor and increase processing volumes by identifying the products, report information to the host system (WMS/ERP/MRP), receive against an order to the vendors/customer, host system decision, label printing, cross docking, or palletizing / depalletizing stations with optional dimensioning and weighing.



DS4800, AL5010, MATRIX 410
Verify bar code information and track product location, after Label Print and Apply Station.

AL5010, DS6300/6400 OSCILLATING MIRROR, DS48000M, MATRIX 410, MATRIX 450
Identify pallet bar code in robotic de-palletizing area.



DIMENSION/WEIGH/SCAN

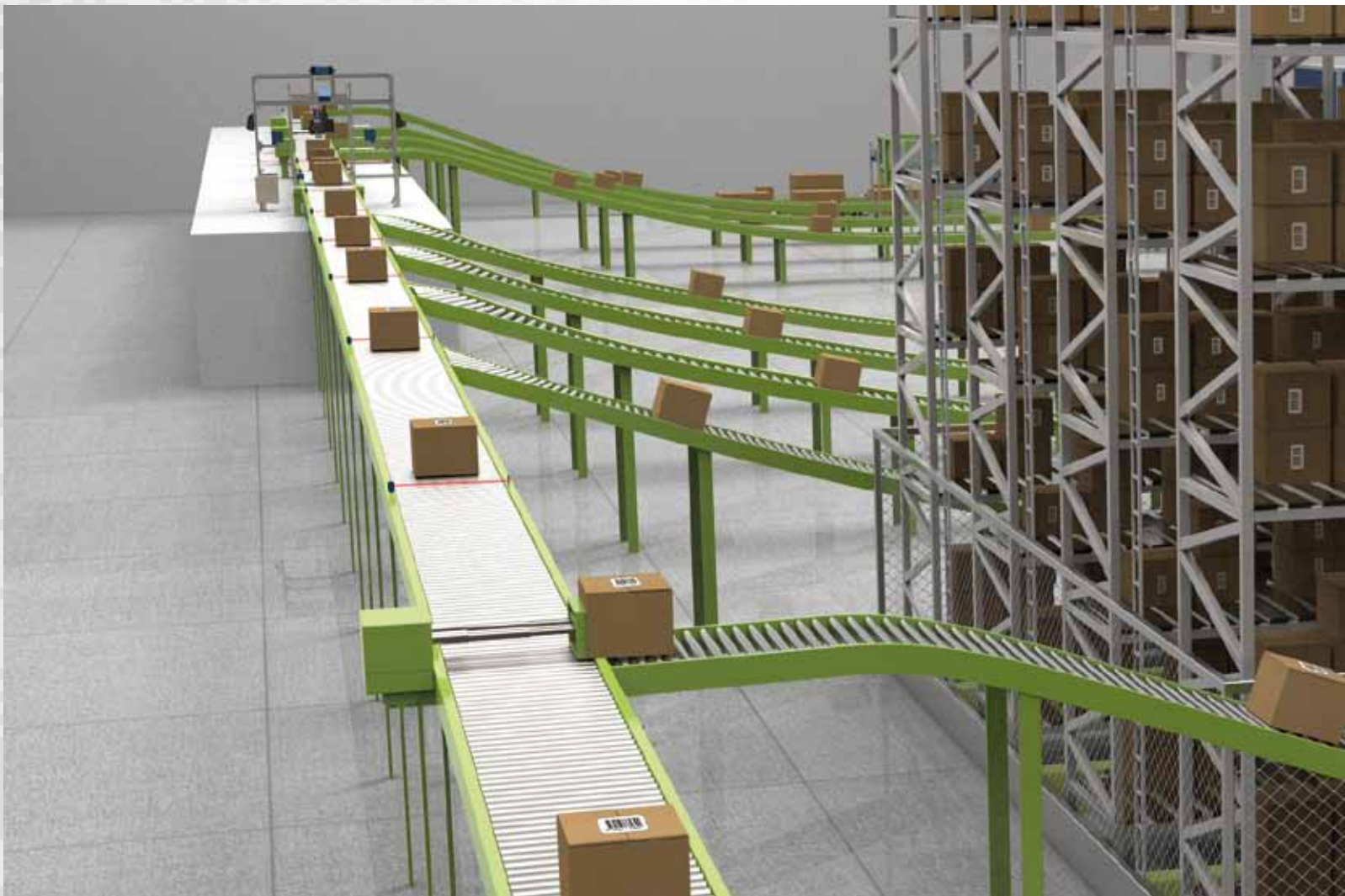
DM3610
Dimensions incoming freight for vendor verification and spatial planning.

DM3610, DS SERIES MEASUREMENT LIGHT ARRAY
Communicate volume and dimensional information to automated receiving station for high performance, high volume, mixed shipment receiving.

FAST LABEL
Controls and manages subsystems for identifying, printing, weighing, dimensioning and communicating with host systems.

S80 SERIES TIME OF FLIGHT DISTANCE SENSOR
DS2 SERIES MEASUREMENT LIGHT ARRAY
Communicate distance and height information to Label Print and Apply System, for proper label application to top of cartons.

TRANSPORT



DETECTION



DATA VS2

S3Z

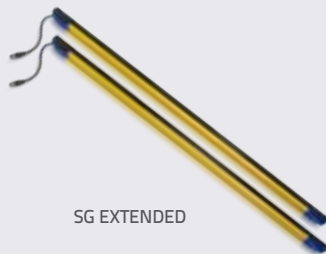
S3Z PRESENCE SENSOR

Detect items for decision point identification.

DATA VS2

Detect item presence on conveyors, in totes, or on tilt trays.

PROTECTION



SG EXTENDED

SG EXTENDED SAFETY LIGHT CURTAINS

Protect operators near & along accessible lengths of conveyor.

ID TRACK AND TRACE



DS2100

DS2400

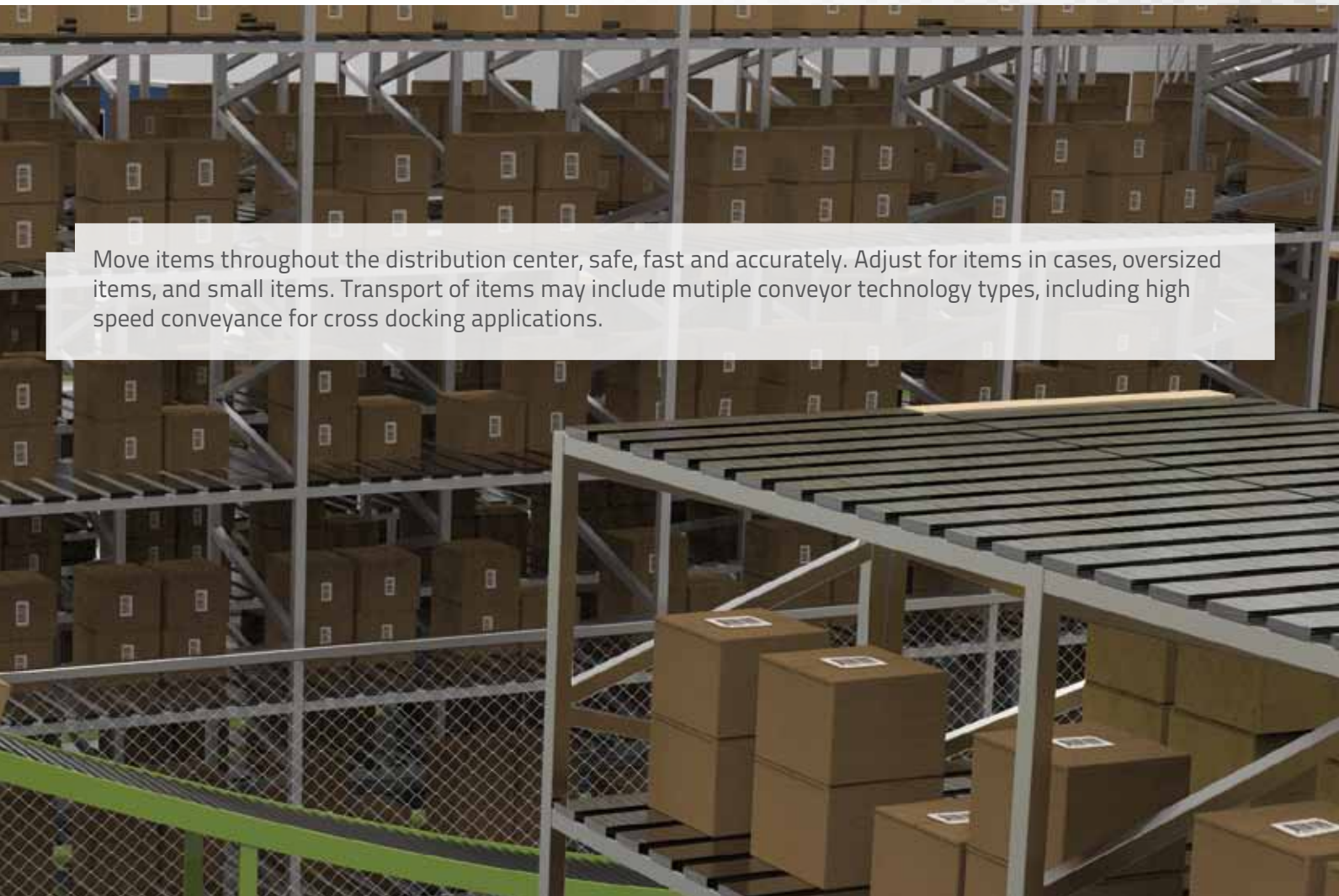
DS4800

DS8100N

DX8200N

DS2100/DS2400/DS4800/DS8100N/DX8200N

Read tote and carton bar codes. Analyze captured bar code images to re-direct totes with degrading codes to



Move items throughout the distribution center, safe, fast and accurately. Adjust for items in cases, oversized items, and small items. Transport of items may include multiple conveyor technology types, including high speed conveyance for cross docking applications.



MATRIX 210™

MATRIX 410™

MATRIX 300™

MATRIX 450™

MATRIX 210/MATRIX 300/MATRIX 410/MATRIX 450 service lane, before they negatively affect performance.

DIMENSION



S80

DS2

S80 SERIES TIME OF FLIGHT DISTANCE SENSOR

DS2 SERIES MEASUREMENT LIGHT ARRAY

Measure & control the height of items being conveyed, to ensure protection of material handling systems.

STORAGE



DETECTION



S80

S80 DISTANCE SENSOR
Provides position feedback for control of automated cranes.

PROTECTION



SG BODY BIG

SG BODY BIG SAFETY LIGHT CURTAINS
Prevent Operator ingress for full protection around robotic crane area of Automated Storage and Retrieval System.

ID TRACK AND TRACE



DS4800, AL5010, MATRIX 410™
Verify bar code information and track product location, after Label Print and Apply Station.

Storage systems handle inventory for cases, totes or pallets including food items in refrigerated environments. Items are moved from storage to order fulfillment, and may return to storage again. Automated Storage and Retrieval Systems handle cases or totes with fully automated crane and conveyor systems. Manual storage locations may hold break case inventory.



FAST Label
FLEXIBLE AUTOMATION SOLUTIONS TOOLS



LP&A

FAST LABEL AND LABEL PRINT & APPLY
 Apply new shipping label upon exit from storage area.

DIMENSION / SCAN



DS2100N, DS2400N
 Identify tote or parcel to be sent into storage area.

DM3610
 Measures materials being stored for product verification.

ORDER FULFILLMENT



Processing of single or multiple orders, by filling shipping containers with the correct items. Order fulfillment can handle items at the case level or unit level, depending upon the operation. Fulfillment may also include packing, manifesting and applying the shipping label for destination.

DETECTION



S3Z

S3Z PRESENCE SENSOR

Detect items in conjunction with scanners, for tracking cases in a multilevel pick modules. Trigger Print & Apply system.

PROTECTION



SG EXTENDED

SG EXTENDED SAFETY LIGHT CURTAINS

Protect operators near & along accessible lengths of conveyor.

ID TRACK AND TRACE



MATRIX 450™

DS4800

AL5010

MATRIX 410, MATRIX 450

Verify manual picking of correct product when using pick to light solutions.

DS2400N, DS2100N, DS4800 with GFC, MATRIX 210

Provide routing and verification of totes and cartons conveyed in multi-level pick modules.



MATRIX 210™



MATRIX 410™



DS2100N



DS2400N

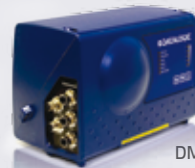
MATRIX 410, MATRIX 450, DS4800, AL5010, DS2400N
Verify bar code information and track product location, after Label Print and Apply Station.

AL5010, DS4800 w/ OM, 6K
Verify barcode information on the side of pallets.

DIMENSION



S80



DM3610



DS2

S80 SERIES TIME OF FLIGHT DISTANCE SENSOR
DS2 SERIES MEASUREMENT LIGHT ARRAY
Dimension carton for label print and apply system.

DM3610
Dimension carton for DWS and labeling system.

SHIPPING



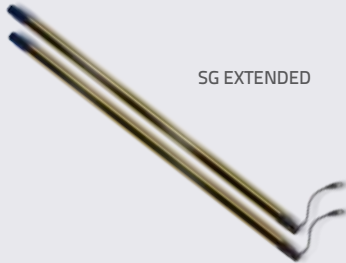
DETECTION



S3Z

S3Z PRESENCE SENSOR
 Detect items in conjunction with scanners, for tracking cases in a multilevel pick modules. Trigger Print and Apply system.

PROTECTION



SG EXTENDED

SG EXTENDED SAFETY LIGHT CURTAINS
 Protect operators near & along accessible lengths of conveyor.

ID TRACK AND TRACE



NVS9000™



DS8100N



AV6010



DX8200N

DS8100N, DS8200X, MATRIX 450, AV6010, NVS9000
 Provide sortation direction from shipping label information read from any side of carton.



A/T SERIES, MATRIX 410, MATRIX 450
Record evidential proof on contents of a container before taping or at trailer load with Vision & ID systems.



DM3610
Dimension outgoing freight for trailer utilization / spatial management.

DIMENSION, WEIGH & SCAN / LABEL, PRINT & APPLY
Provide Automated solution for labeling cartons based on lowest cost carrier using dimensional, weight and destination information. Ensure accuracy of correct shipping label, to reduce errors.

2007-09-24 15:00:00



HEADQUARTERS

Datalogic Automation Srl
Via Lavino, 265
40050 Monte San Pietro - Bologna - Italy
Tel. +39 051/6765611
Fax +39 051/6759324
info.automation.it@datalogic.com

BRANCHES AND SALES OFFICES

EUROPE BENELUX

Datalogic Automation Benelux
Newtonweg 3
4104 BK Culemborg
The Netherlands
Tel. +31 345/589489
Fax +31 345/511419
info.automation.nl@datalogic.com

FRANCE

Datalogic Automation Srl
Succursale en France
Le Parc Technologique de Lyon
333 cours du 3ème Millénaire - Le Pôle
69800 Saint Priest
Tél. +33 (0)4/72476180
Fax +33 (0)4/72470721
info.automation.fr@datalogic.com

GERMANY

Datalogic Automation Srl
Niederlassung Central Europe
Gottlieb-Stoll-Strasse 1,
73271 Holzmaden
Tel. +49 7023 7453-100
Fax +49 7023 7453-129
info.automation.de@datalogic.com

ITALY

Datalogic Automation Srl
Via Lavino, 265
40050 Monte San Pietro - Bologna
Tel. +39 051/6765611
Fax +39 051/6759324
info.automation.it@datalogic.com

Datalogic Automation Srl

LASER MARKING
Via Le Gorrey, 10
11020, Donnas - Aosta
Tel. +39-0125-8128201
Fax +39-0125-8128401
info.automation.it@datalogic.com

Via Dell'Industria 15, 21018
Sesto Calende - Varese
Tel. +39-03319180601
Fax +39-03319180801
info.automation.it@datalogic.com

SPAIN

Datalogic Automation Iberia
Sucursal en España
C/Samontà, 21 Planta baja, Local 0
08970 Sant Joan Despí - Barcelona
Tel. +34 (0)93/4772059
Fax +34 (0)93/4777272
info.automation.es@datalogic.com

NORDIC

Datalogic Automation AB
Höjdrodergatan 21
21239 Malmö - Sweden
Tel. +46 (0)40/385000
Fax +46 (0)40/385001
info.automation.se@datalogic.com

UNITED KINGDOM

Datalogic Automation UK
Datalogic House
Dunstable Road, Redbourn - Hertfordshire
AL3 7PR
Tel. +44 (0) 1582 791750
Fax +44 (0) 1582 791769
info.automation.uk@datalogic.com

TURKEY

Datalogic ADC Turkey
No:16 Neo Vista Sitesi C1 Blok D.7
Gokturk/Kemerburgaz
34077 - Istanbul, Turkey
info.adc.tr@datalogic.com

NORTH AMERICA

Datalogic Automation Inc
511 School House Road
Telford, PA 18969-1196 - United States
Tel. +1-800-BAR-CODE or +1-215-723-0981
Fax +1-215-721-5551
info.automation.us@datalogic.com

Datalogic Automation Inc

MACHINE VISION
5775 W Old Shakopee Rd
STE 160, Bloomington, MN 55437 United States
Tel. +1-952-996-9500
Fax +1-952-996-9501
info.automation.us@datalogic.com

SOUTH AMERICA

Datalogic Brazil
Rua Arandu, 281 CJ 32 Broklin Novo, 04562-030
Sao Paulo, Brazil
Tel. +55 11 5507 7721
orders.ia.int@datalogic.com

APAC

AUSTRALIA-NEW ZEALAND

Datalogic Automation Pty Ltd
Unit 130, 45 Gilby Road
Mt Waverley - Victoria, 3149 - Australia
Tel. +61 (0)3/95589299
Fax: +61 (0)3/95589233
info.automation.au@datalogic.com

CHINA

Datalogic Automation Asia
Floor 20, Room 2017, Building 2,
16 West Nan San Huan Road
Fengtai District, Beijing
Tel: +86 (0)21-5836 6692
Fax: +86 (0)21-5836 6695
info.automation.cn@datalogic.com

Suite 1301, Hua Rong Plaza,
1289 South Pudong Road, Pudong District
Shanghai 200120
Tel: +86 (0)21-5836 6692
Fax: +86 (0)21-5836 6695
info.automation.cn@datalogic.com

Room 1104B, 5#Tower, Fantasta MIC Plaza,
West Nanhai Road, Nanshan District,
518054 Shenzhen, Guangdong, China
Tel: +86 (0)755-8629 6779
Fax: +86 (0)755-8628 1280
info.automation.cn@datalogic.com

1202, Excellence Build, 128 Yanji Road,
Shibe District, Qingdao, China
Tel: +86 532 55787889
Fax: +86 532 55787890

JAPAN

Idec Datalogic Co. Ltd
10-40, Mikuni-Honmachi 1-Chome,
Yodogawa-ku, Osaka 532 0005
Tel. +81(6) 6398/3200
Fax +81 (6) 6398/3202
www.idljp.com

Rev. 00, 02/2014



Product and Company names and logos referenced may be either trademarks or registered trademarks of their respective companies. We reserve the right to make modifications and improvements.



www.datalogic.com