

# IEC Low Voltage General Purpose Protection

## Ferrule fuse-links

14x51 aM 500 to 690VAC from 0.25 to 50A

Data Sheet

Ferraz Shawmut aM and gG fuse-links cover a wide range of physical sizes and ampere ratings for 400, 500, and 690VAC for protection in electrical distribution circuits and various industrial applications. Most ratings are available in size 8x31 and size 10x38 with an optional indicator, and in size 14x51 and 22x58 with an optional striker to activate an auxiliary contact. All cylindrical fuse-links have ceramic bodies and silver-plated ferrules. Our technology and process was designed to ensure highly reliable technical performance.



### Benefits

- Small size
- Safest and most reliable protection system
- High limiting and breaking capacity
- Striker version available for remote blown fuse indication
- Low power dissipation

### Applications

aM type for protection of motors, transformers and other loads with in-rush currents.

### 14x51 aM fuse-links without striker

Size	Class	Nominal Current (A)	Rated Voltage (V)	Catalog Number w/o striker	Reference Number w/o striker	Rated Voltage (V)	Catalog Number w/o striker	Reference Number w/o striker
14x51	aM	0.25	690	FR14AM69V0.25	B212590	-	-	-
14x51	aM	0.5	690	FR14AM69V0.5	L213105	-	-	-
14x51	aM	1	690	FR14AM69V1	E213605	-	-	-
14x51	aM	2	690	FR14AM69V2	H214114	-	-	-
14x51	aM	4	690	FR14AM69V4	K214622	-	-	-
14x51	aM	6	690	FR14AM69V6	S215135	-	-	-
14x51	aM	8	690	FR14AM69V8	T215642	-	-	-
14x51	aM	10	690	FR14AM69V10	Z216659	-	-	-
14x51	aM	12	690	FR14AM69V12	M217177	-	-	-
14x51	aM	16	690	FR14AM69V16	Q217686	-	-	-
14x51	aM	20	690	FR14AM69V20	P218720	-	-	-
14x51	aM	25	690	FR14AM69V25	E219769	-	-	-
14x51	aM	32	690	FR14AM69V32	G1011477	500	FR14AM50V32	M222214
14x51	aM	40	690	FR14AM69V40	J1011479	500	FR14AM50V40	Q200758
14x51	aM	45	-	-	-	500	FR14AM50V45	L211035
14x51	aM	50	-	-	-	500	FR14AM50V50	E211558

### 14x51 aM fuse-links with striker

Size	Class	Nominal Current (A)	Rated Voltage (V)	Catalog Number with striker	Reference Number with striker	Rated Voltage (V)	Catalog Number with striker	Reference Number with striker
14x51	aM	1	690	FR14AM69V1P	-	500	FR14AM50V1P	W215644
14x51	aM	2	690	FR14AM69V2P	-	500	FR14AM50V2P	B216661
14x51	aM	4	690	FR14AM69V4P	-	500	FR14AM50V4P	C218203
14x51	aM	6	690	FR14AM69V6P	-	500	FR14AM50V6P	E219240
14x51	aM	8	690	FR14AM69V8P	-	500	FR14AM50V8P	N222215
14x51	aM	10	690	FR14AM69V10P	-	500	FR14AM50V10P	S200760
14x51	aM	12	690	FR14AM69V12P	-	500	FR14AM50V12P	R201817
14x51	aM	16	690	FR14AM69V16P	-	500	FR14AM50V16P	G211560
14x51	aM	20	-	-	-	500	FR14AM50V20P	E212593
14x51	aM	25	-	-	-	500	FR14AM50V25P	H213608
14x51	aM	32	-	-	-	500	FR14AM50V32P	N214625
14x51	aM	40	-	-	-	500	FR14AM50V40P	X215645
14x51	aM	45	-	-	-	500	FR14AM50V45P	C216662
14x51	aM	50	-	-	-	500	FR14AM50V50P	D218204

### Ratings

690VAC 0.25 to 40A  
500VAC 32 to 50A  
120kA breaking capacity

### Standards & Approvals

IEC 60269-1 & -2

Approved by Lloyd's Register of Shipping and Bureau Veritas

RoHS Compliant



### Related products

Fuse-holders: Modulostar® CMS14

Materials: body: ceramic

Materials: contact: silver plated copper

Product weight: 21g

Packaging: 10 pieces

# IEC Low Voltage General Purpose Protection

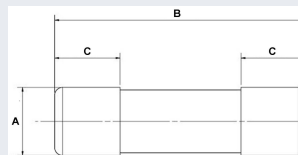
## Ferrule fuse-links

14x51 aM 500 to 690VAC from 0.25 to 50A



Size	Nominal Current (A)	Breaking Capacity @ Rated Voltage (kA)	Watts Loss @ 100% In (W)
14x51	0.25	120	0.1
14x51	0.5	120	0.9
14x51	1	120	0.13
14x51	2	120	0.18
14x51	4	120	0.28
14x51	6	120	0.42
14x51	8	120	0.55
14x51	10	120	0.65
14x51	12	120	0.75
14x51	16	120	1.05
14x51	20	120	1.3
14x51	25	120	1.55
14x51	32	120	2.05
14x51	40	120	2.65
14x51	45	120	2.85
14x51	50	120	2.95

### Dimensions (mm)



Size	A	B	C
14x51	14.3	51	13.8

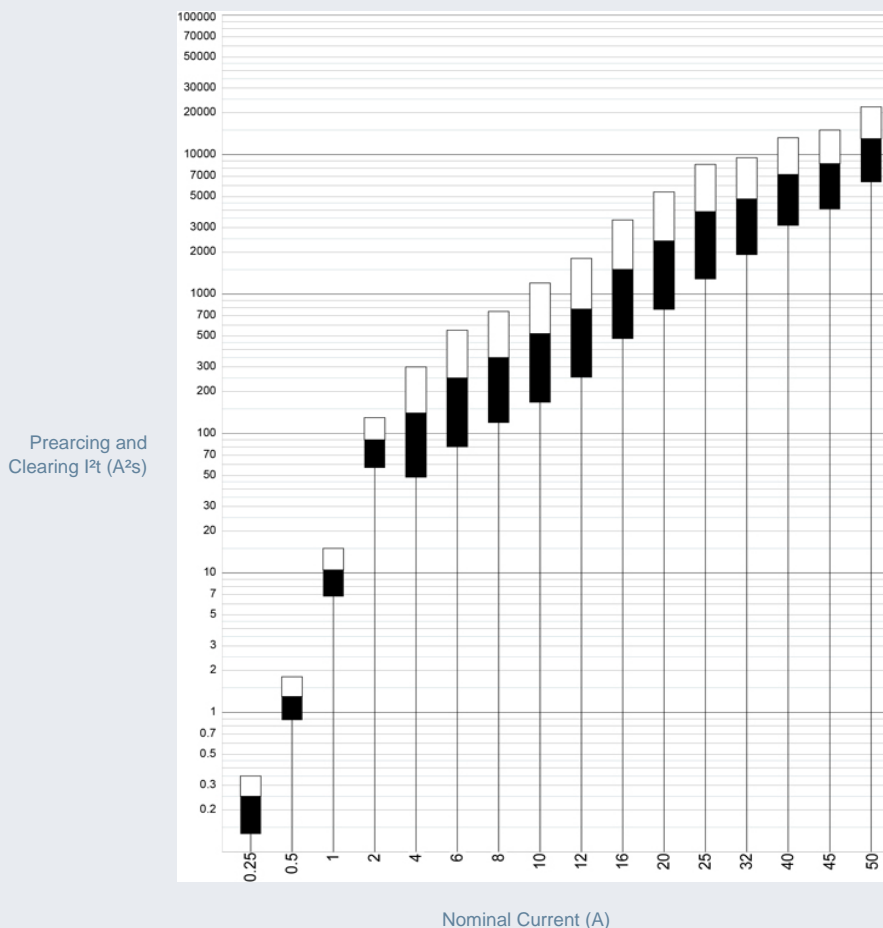
### Striker



Before

After

### Characteristics I<sup>2</sup>t



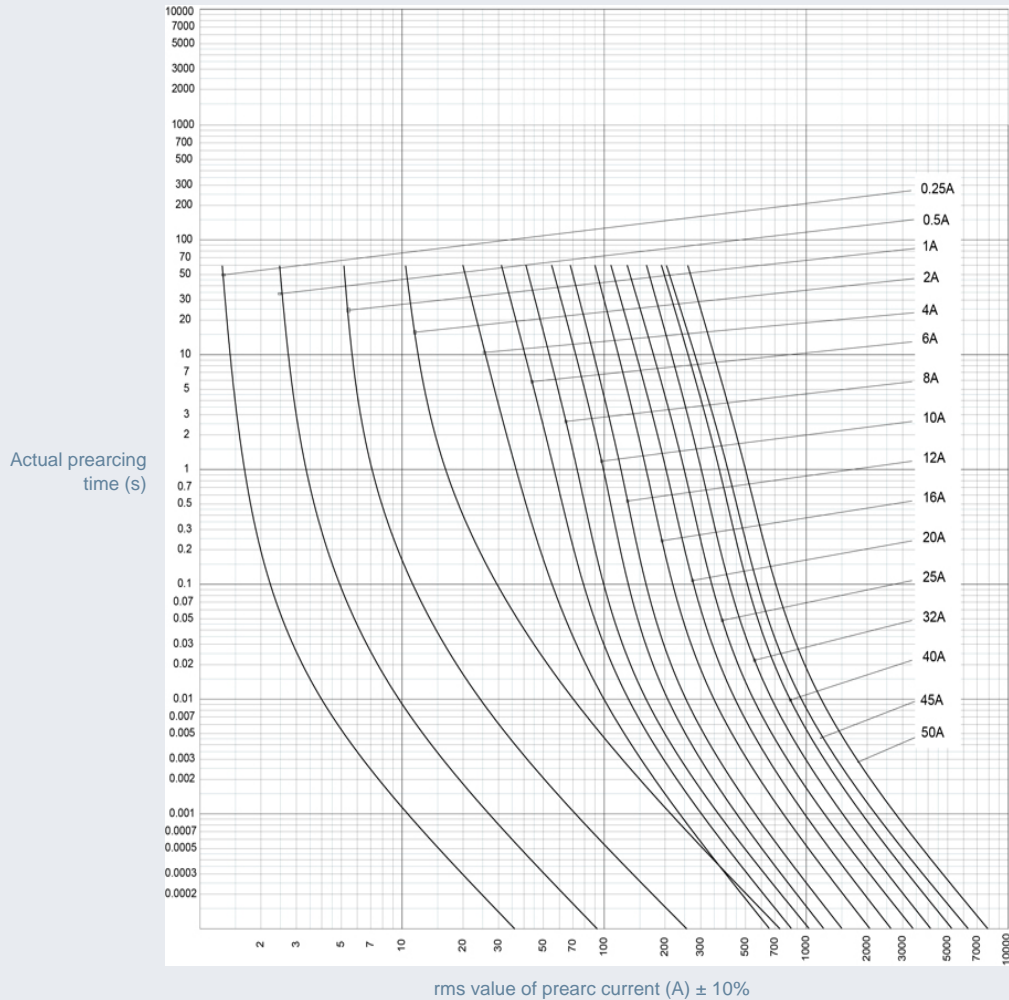
# IEC Low Voltage General Purpose Protection

## Ferrule fuse-links

14x51 aM 500 to 690VAC from 0.25 to 50A

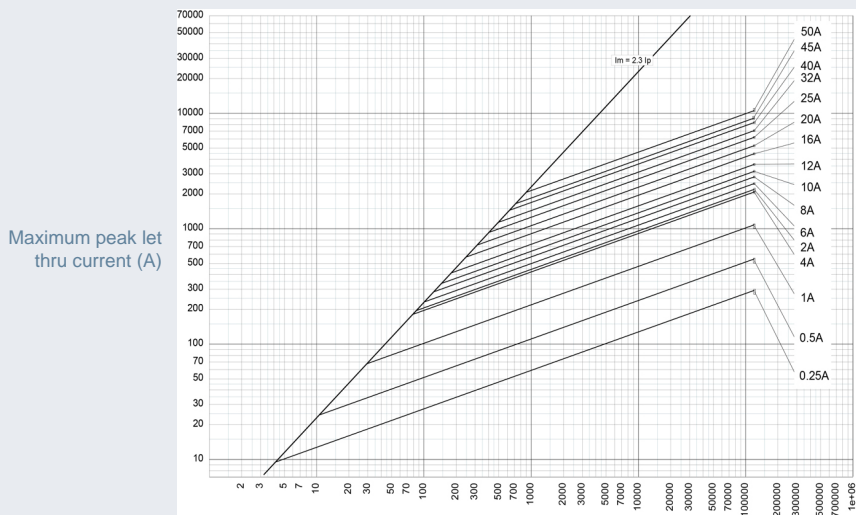


Time current characteristics



rms value of prearc current (A) ± 10%

Peak let thru characteristics



50 Hz rms symmetrical prospective current (Ip) (A)