

# IEC Low Voltage General Purpose Protection

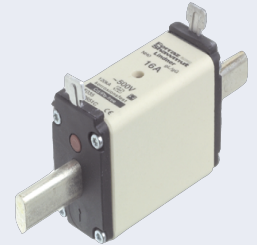
## NH fuse-links Plain blades

### Sizes 000 to 3 gG 400VAC SGL from 2 to 630A

The NH system is classified among plug-in fuse systems and is composed of:

- fuse-base, (possibly including terminal covers and phase barriers)
- fuse-link with blade contact
- fuse-link replacement device (LV HRC fuse puller)

Since the design of this system cannot guarantee non-interchangeability of rated current, it must be handled by a qualified professional.



#### Benefits

Dimensions according to DIN 43 620  
Parts 1 to 4 standard

Isolated metal gripping lugs (SGL)

Double indicator

Lead free contact blades

#### Applications

gG: general purpose cable and line protection



#### Approvals

DIN 57636 Part 201

VDE 0636 Part 201

IEC 60269-1 and -2



#### Related products

Fuse-holders: NH fuse bases

NH fuse switch disconnectors

# IEC Low Voltage General Purpose Protection

## NH fuse-links Plain blades

### Sizes 000 to 3 gG 400VAC SGL from 2 to 630A



#### Sizes 000 to 3

Size	Rated Voltage (V)	Nominal Current (A)	Watts Loss @ 100% In (W)	Previous reference	Catalog Number	Reference Number	Weight (g)	Pack.
000	400	2	3.3	1E613.	NH000GG40V2-1	P223688	120	3
000	400	4	1.35	1E619.	NH000GG40V4-1	Q223689	120	3
000	400	6	1.7	1E623.	NH000GG40V6-1	R223690	120	3
000	400	10	1.0	1E631.	NH000GG40V10-1	S223691	120	3
000	400	16	1.8	1E635.	NH000GG40V16-1	T223692	120	9
000	400	20	2.0	1E637.	NH000GG40V20-1	V223693	120	9
000	400	25	2.4	1E639.	NH000GG40V25-1	W223694	120	9
000	400	32	2.6	1E643.	NH000GG40V32-1	X223695	120	9
000	400	35	3.2	1E645.	NH000GG40V35-1	Y223696	120	9
000	400	40	3.1	1E647.	NH000GG40V40-1	Z223697	120	9
000	400	50	3.5	1E651.	NH000GG40V50-1	A223698	120	9
000	400	63	4.6	1E655.	NH000GG40V63-1	B223699	120	9
000	400	80	5.0	1E659.	NH000GG40V80-1	C223700	120	9
000	400	100	5.5	1E663.	NH000GG40V100-1	D223701	120	9
000	400	125	8.6	1E765.	NH00GG40V125-1	G223704	180	3
000	400	160	9.6	1E769.	NH00GG40V160-1	H223705	180	3
1	400	35	3.9	1E145.	NH1GG40V35-1	V223716	280	3
1	400	50	4.5	1E151.	NH1GG40V50-1	W223717	280	3
1	400	63	5.7	1E155.	NH1GG40V63-1	X223718	280	3
1	400	80	5.5	1E159.	NH1GG40V80-1	Y223719	280	3
1	400	100	7.0	1E163.	NH1GG40V100-1	Z223720	280	3
1	400	125	9.1	1E165.	NH1GG40V125-1	A223721	300	3
1	400	160	13.0	1E169.	NH1GG40V160-1	B223722	300	3
1	400	200	13.1	1E171.	NH1GG40V200-1	C223723	300	3
1	400	224	15.1	1E173.	NH1GG40V224-1	D223724	300	3
1	400	250	16.9	1E175.	NH1GG40V250-1	E223725	300	3
2	400	35	3.9	1E245.	NH2GG40V35-1	L227250	187	3
2	400	50	4.5	1E251.	NH2GG40V50-1	M227251	187	3
2	400	63	5.7	1E255.	NH2GG40V63-1	N227252	187	3
2	400	80	6.1	1E259.	NH2GG40V80-1	X223741	320	3
2	400	100	7.3	1E263.	NH2GG40V100-1	Y223742	320	3
2	400	125	9.1	1E265.	NH2GG40V125-1	Z223743	320	3
2	400	160	13.0	1E269.	NH2GG40V160-1	A223744	320	3
2	400	200	13.5	1E271.	NH2GG40V200-1	B223745	320	3
2	400	224	15.1	1E273.	NH2GG40V224-1	C223746	320	3
2	400	250	18.0	1E275.	NH2GG40V250-1	D223747	320	3
2	400	315	19.9	1E279.	NH2GG40V315-1	E223748	400	3
2	400	355	22.7	1E281.	NH2GG40V355-1	F223749	400	3
2	400	400	28.0	1E283.	NH2GG40V400-1	G223750	400	3
3	400	250	19.9	1E375.	NH3GG40V250-1	H223751	450	1
3	400	315	22.7	1E379.	NH3GG40V315-1	J223752	450	1
3	400	400	28.0	1E383.	NH3GG40V400-1	K223753	450	1
3	400	500	30.8	1E387.	NH3GG40V500-1	L223754	600	1
3	400	630	43.0	1E389.	NH3GG40V630-1	M223755	600	1

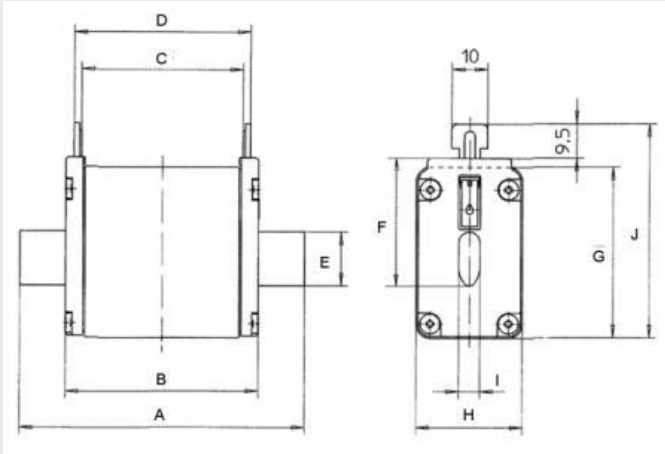
# IEC Low Voltage General Purpose Protection

## NH fuse-links Plain blades

Sizes 000 to 3 gG 400VAC SGL from 2 to 630A



### Dimensions (mm)



Size	Nominal Current (A)	A	B	C	D	E	F	G	H	I	J
000	2-100	78	53.4	45.7	49.7	15	35	40.5	20.8	6	52.5
00	125-160	79	53.5	44.8	49	15	35	47.5	29.5	6	59.5
0	2-160	125	67.5	62.5	62.5	66.7	35	47.5	29.5	6	59.5
1	16-125	135	71.5	62.8	67	15	40	47.5	29.5	6	64.5
1	160-250	135	73.4	63	67.2	20	40	52.5	39.5	6	64.5
2	16-250	150	73.4	63	67.2	20	48	52.5	39.5	6	72.5
2	300-400	150	73.4	63	67.2	26	48	60	51	6	72
3	250-400	150	73.4	63	68	26	60	60	51	6	83.5
3	425-630	150	73.4	63	68	33	60	74	70	6	86

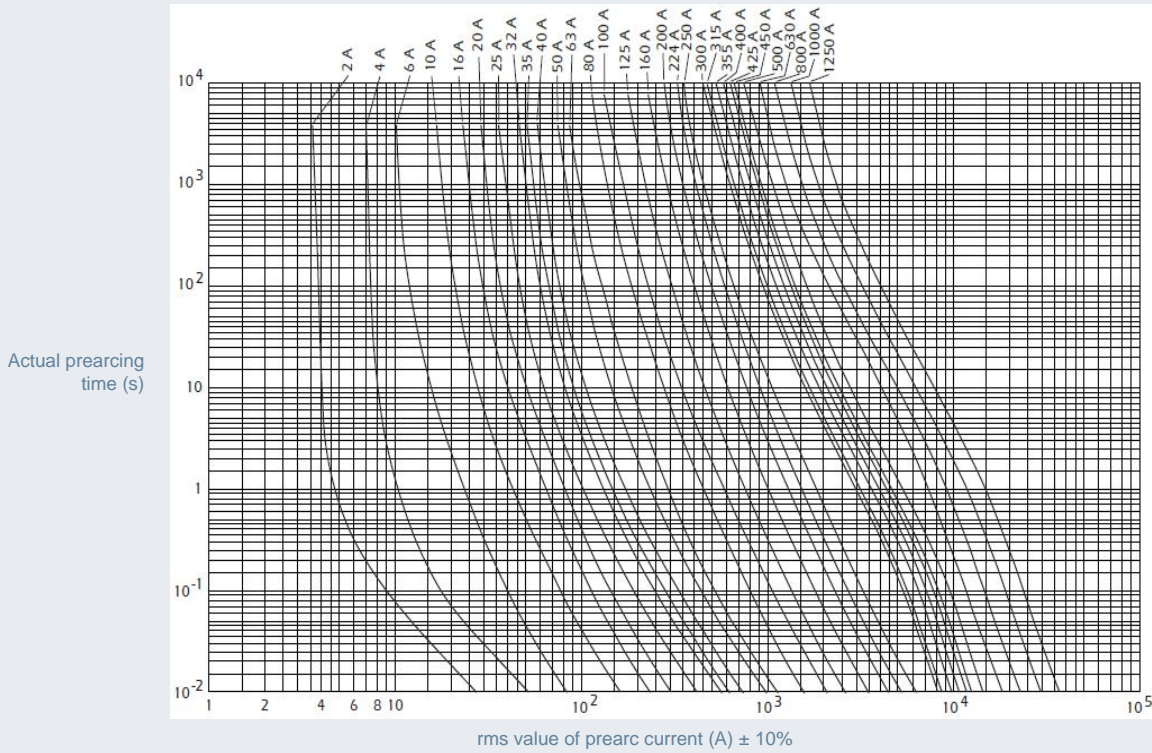
# IEC Low Voltage General Purpose Protection

## NH fuse-links Plain blades

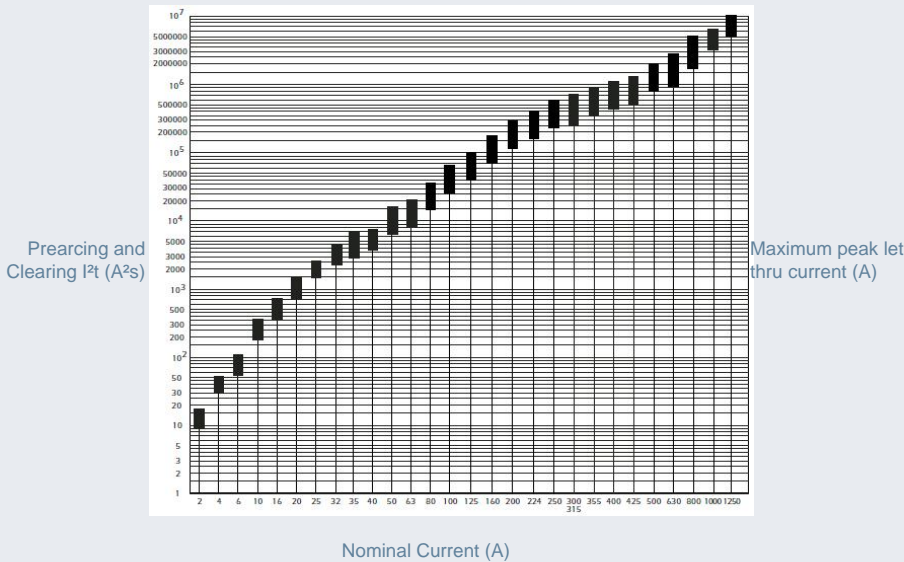
Sizes 000 to 3 gG 400VAC SGL from 2 to 630A



Time current characteristics



Characteristics I<sup>2</sup>t



Peak let thru characteristics

