

Datalogic™ OPOS Service Objects



User Manual

Datalogic ADC, Inc.

959 Terry Street
Eugene, OR 97402
USA

Telephone: (541) 683-5700

Fax: (541) 345-7140

©2008-2014 Datalogic ADC, Inc.

An Unpublished Work - All rights reserved. No part of the contents of this documentation or the procedures described therein may be reproduced or transmitted in any form or by any means without prior written permission of Datalogic ADC, Inc. or its subsidiaries or affiliates ("Datalogic" or "Datalogic ADC"). Owners of Datalogic products are hereby granted a non-exclusive, revocable license to reproduce and transmit this documentation for the purchaser's own internal business purposes. Purchaser shall not remove or alter any proprietary notices, including copyright notices, contained in this documentation and shall ensure that all notices appear on any reproductions of the documentation.

Should future revisions of this manual be published, you can acquire printed versions by contacting your Datalogic representative. Electronic versions may either be downloadable from the Datalogic website (www.datalogic.com) or provided on appropriate media. If you visit our website and would like to make comments or suggestions about this or other Datalogic publications, please let us know via the "Contact Datalogic" page.

Disclaimer

Datalogic has taken reasonable measures to provide information in this manual that is complete and accurate, however, Datalogic reserves the right to change any specification at any time without prior notice.

Datalogic and the Datalogic logo are registered trademarks of Datalogic S.p.A. in many countries, including the U.S.A. and the E.U. All other brand and product names may be trademarks of their respective owners.



Table of Contents

DATALOGIC™ OPOS SERVICE OBJECTS	1
Introduction	1
Document Conventions	1
About the Datalogic OPOS Service Objects	1
Datalogic Products Supported	2
Installation	3
Running the Install	3
GUI Installation	3
Silent Install from Command Prompt	4
Utilities	5
DualTest Utility	5
Scanner with DualTest	5
Firmware Update with DualTest	9
Firmware Update from the Command Line	13
Scale with DualTest	14
Live Weight Display	17
Registry	21
Windows Management Instrumentation (WMI) Compatible	21
OPOS Registry	21
Scanner	22
Scale	26
Logging	28
Levels	28
Registry Service Properties	29
Additional Logging	30
Developers Guide	31
Scanner Properties	31
Common Properties	31
Device Specific Properties	33
Scanner Methods	34
Common Methods	34
Device Specific Methods	35
Scanner Events	36
Common Event	36
Scale Properties	36
Common Properties	36
Device Specific Properties	38
Scale Methods	40
Common Methods	40
Device Specific Methods	42
Scale Events	43
Common Event	43
Device Specific Events	43

NOTES



Datalogic™ OPOS Service Objects

Introduction

Document Conventions

Formatting conventions are used throughout this guide to provide a consistent method for representing screen shots and command entries.



Notes contain additional information of interest to the user.



The CAUTION symbol advises you of actions that could damage equipment or property.

Keystrokes: Filenames, paths, field selections, and data or keystrokes entered by the user are shown in this `monospaced` typeface.

About the Datalogic OPOS Service Objects

Service Objects are packaged with the current OPOS control objects. They are fully compatible with the Unified POS Retail Peripheral Architecture and the OPOS appendix to that spec. To view the current version of the document, go online to the National Retail Federation at www.nrf-arts.org/download. The Service Objects support four types of DATALOGIC interfaces: RS232 Standard (also called Dual Cable), RS232 Single Cable, USB-COM, and OEM USB.

Datalogic Products Supported

Device Type	Scanner				Scale		
	RS232 Std	RS232 SC	USB-COM	OEM USB	RS232 Std	RS232 SC	OEM USB
Table Top Scanner/Scales							
Magellan 3200	•	•	•	•			
Magellan 3300	•	•	•	•			
Magellan 2200VS	•	•		•			
Magellan 2300HS	•	•		•			
Magellan 800i	•	•	•	•			
Magellan 8100	•	•		•	•	•	•
Magellan 8200	•	•		•	•	•	•
Magellan 8300	•	•		•	•	•	•
Magellan 8400	•	•		•	•	•	•
Magellan 8500	•	•		•	•	•	•
Magellan 8500xT	•	•		•	•	•	•
Magellan 9500	•	•		•	•	•	•
Magellan 9800	•	•	•	•	•	•	•
Magellan 1000i	•		•	•			
Magellan 1100i	•		•	•			
Magellan 1400i	•		•	•			
Duet	•			•			
VS800	•			•			
Handheld Scanners							
GD41XX	•		•	•			
GM41XX	•		•	•			
GBT41XX	•		•	•			

Device Type	Scanner				Scale		
	RS232 Std	RS232 SC	USB-COM	OEM USB	RS232 Std	RS232 SC	OEM USB
Handheld Scanners (continued)							
GD44XX	•		•	•			
GBT44XX	•		•	•			
GM44XX	•		•	•			
QS6000+	•			•			
QS2500	•			•			
QS6500	•			•			
QS6500BT	•			•			
QD23XX	•		•	•			
QD21XX	•		•	•			
PD71XX	•		•	•			

Installation

Running the Install



Uninstall any previous DATALOGIC or PSC OPOS scanner/scale service objects before proceeding with the installation of the DATALOGIC OPOS Service Objects.

DATALOGIC Service Objects are compatible with OPOS Common Control Objects included in this package.

Installation can be performed in either of two ways: using a standard GUI installation, or as a silent install from the Command Prompt.

GUI Installation

To install, please perform the following steps:

1. Download the most current install file for the DATALOGIC OPOS service objects from the Datalogic website (www.datalogic.com).

2. Double-click `DatalogicOPOS.msi` to run the install program.
3. Follow the on-screen instructions to complete the installation.



Version and date fields will be different depending on the version of the downloaded file.

Silent Install from Command Prompt

To perform a “silent install,” open a command window and `cd` to the directory containing the `DatalogicOPOS.msi` file. Type the following command to execute the install process:

```
> DatalogicOPOS.msi /quiet
```



Silent Install mode does not install Common Control Objects.

To install control objects during a silent install, type the following command:

```
> DatalogicOPOS.msi /quiet INSTALLCONTROBJECTS=1
```


Utilities

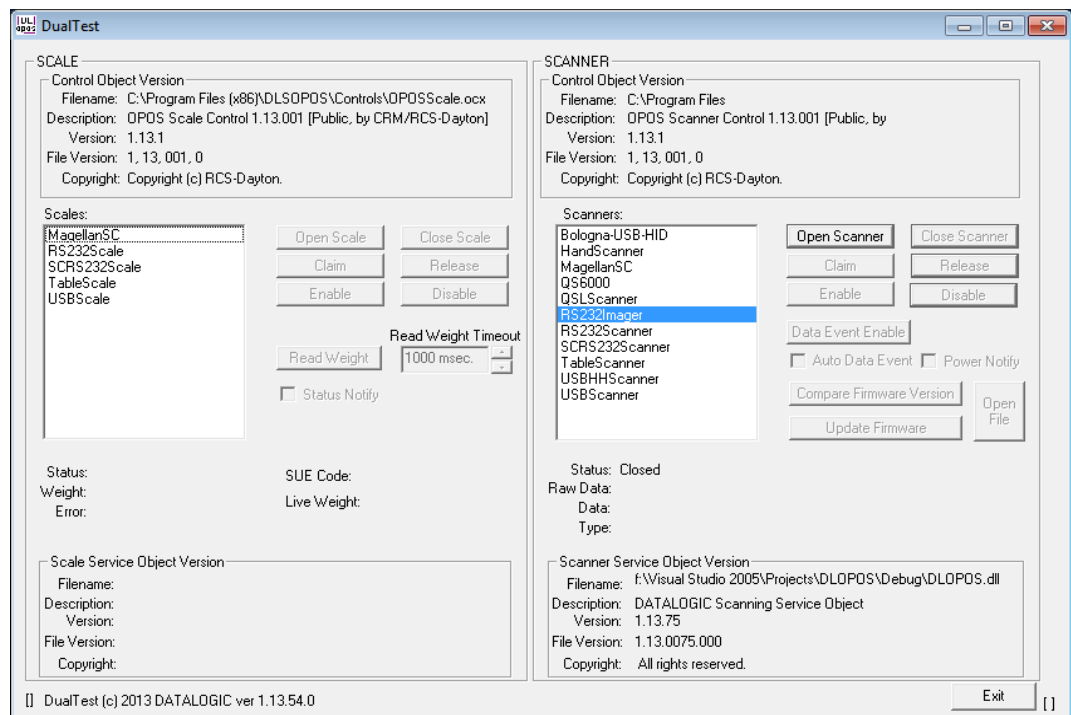
DualTest Utility

The Datalogic OPOS package contains a utility called DualTest that provides customers with the ability to quickly connect and test the operation of a Datalogic scanner/scale with the Datalogic service objects. Simple OPOS operations such as Open, Claim, Enable, Read Weights, bar code scanning, bar code type, Release, and Close can be exercised with this utility. DualTest is a fully operational OPOS application which exercises the connection and data path through the Common Controls and Service Objects to the physical device.

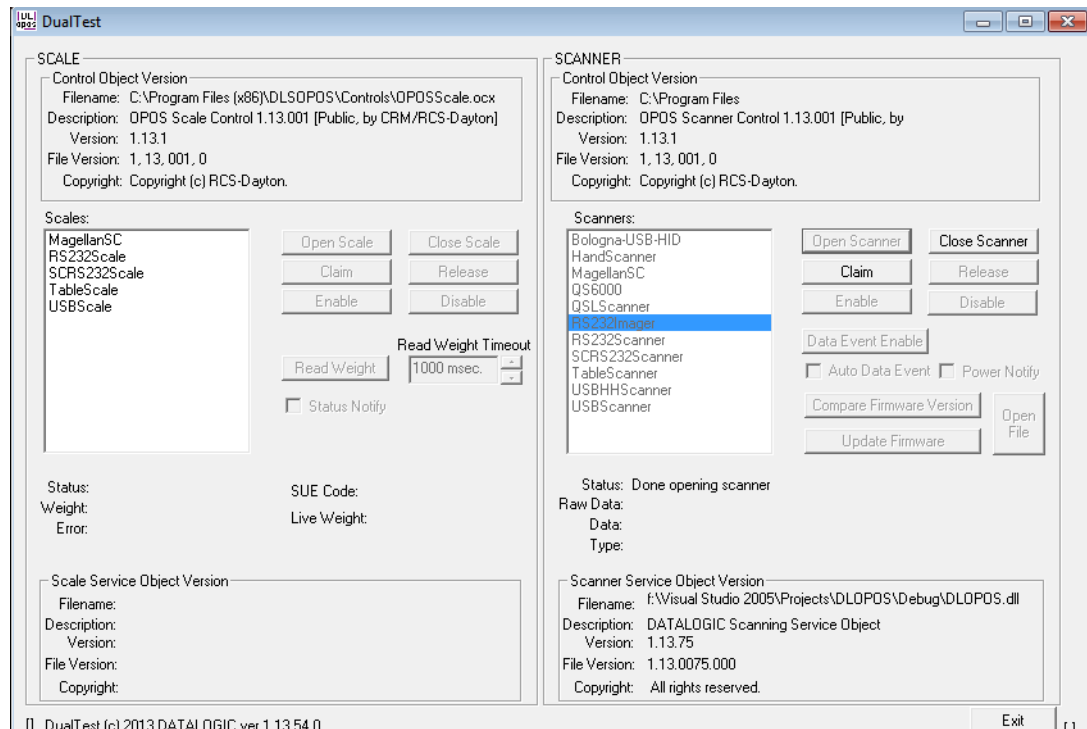
Scanner with DualTest

To connect to a Scanner, follow these steps after installing the OPOS package from Datalogic:

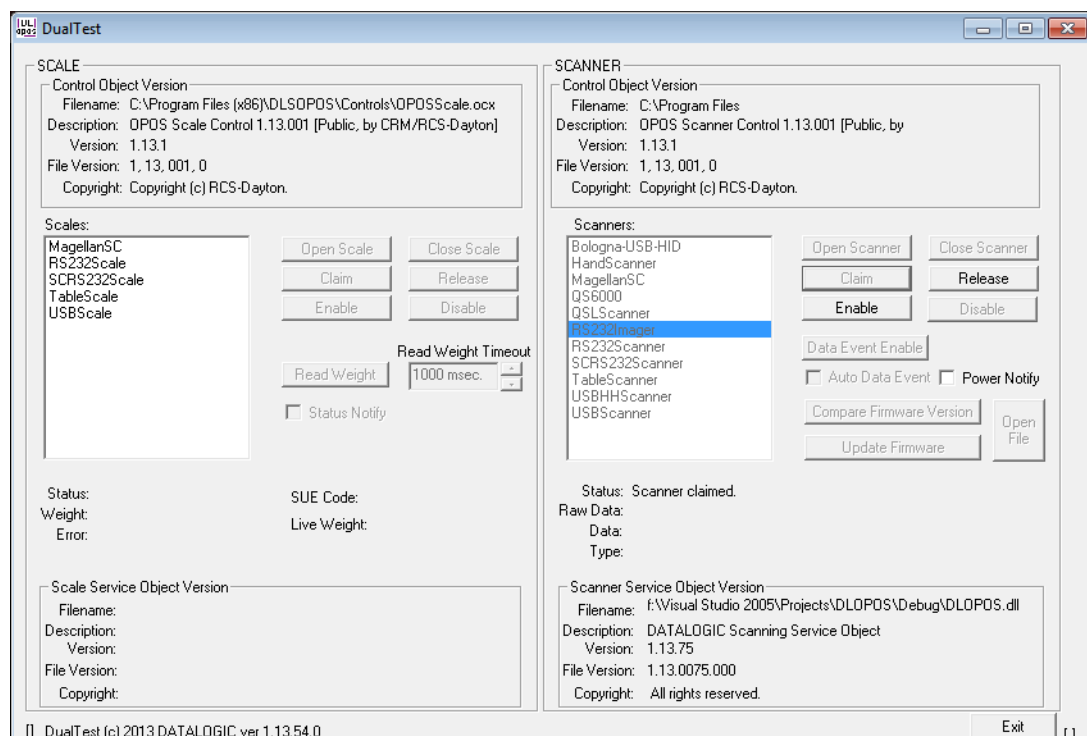
1. Select device:



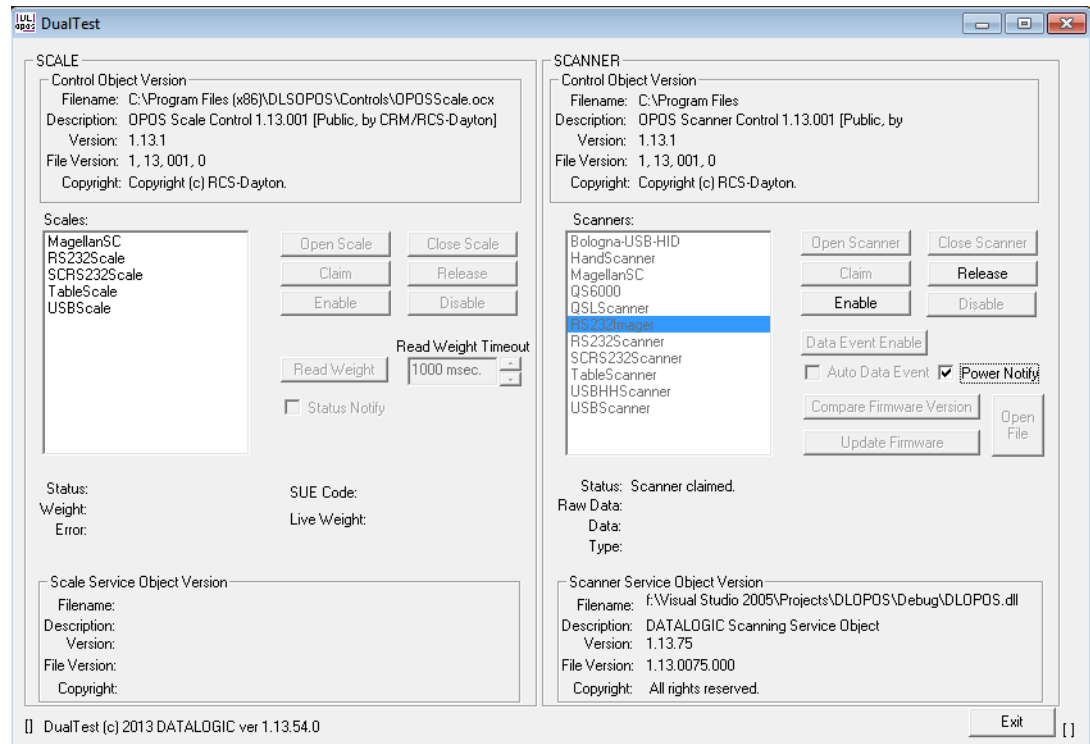
2. Open Scanner:



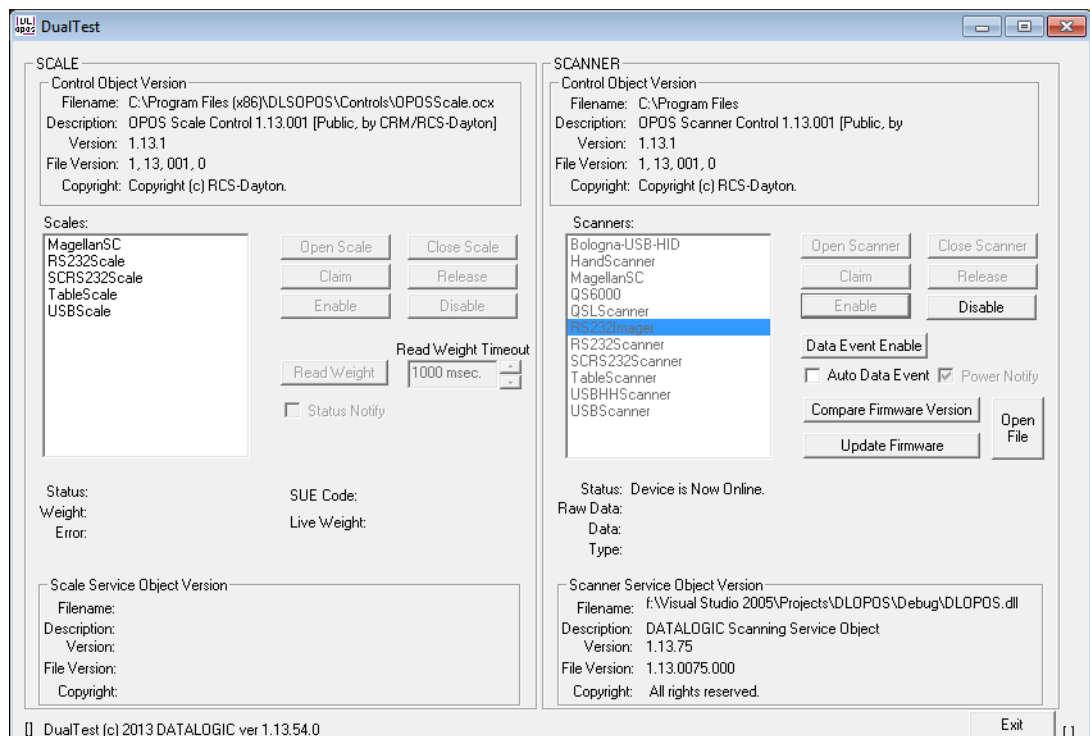
3. Claim:



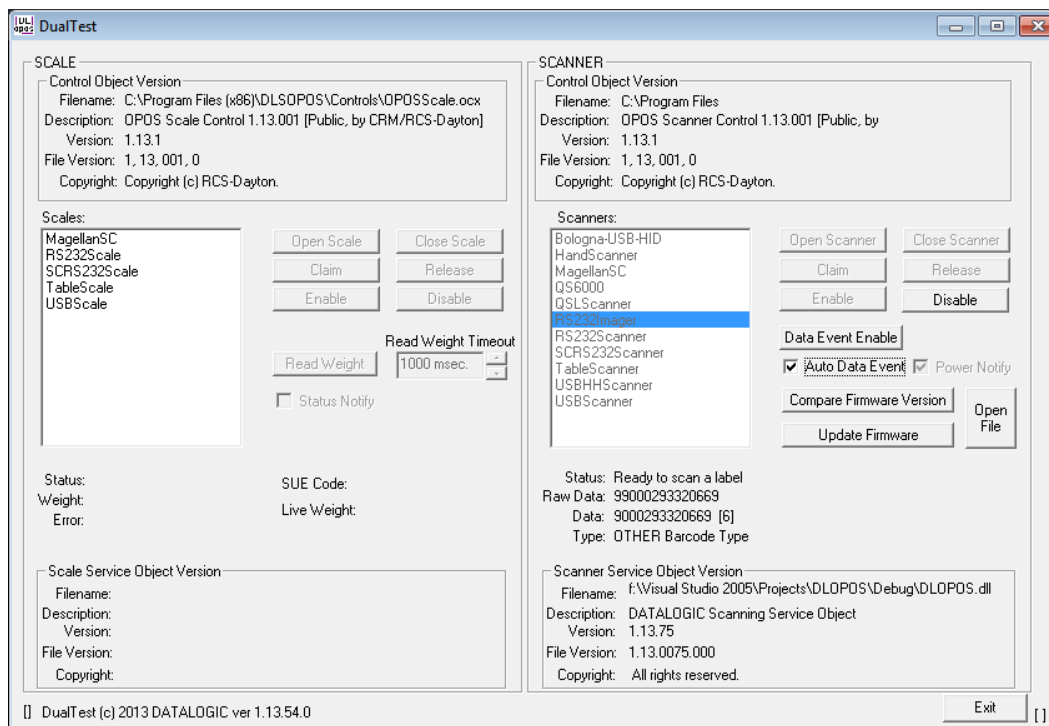
4. Select Power Notify:



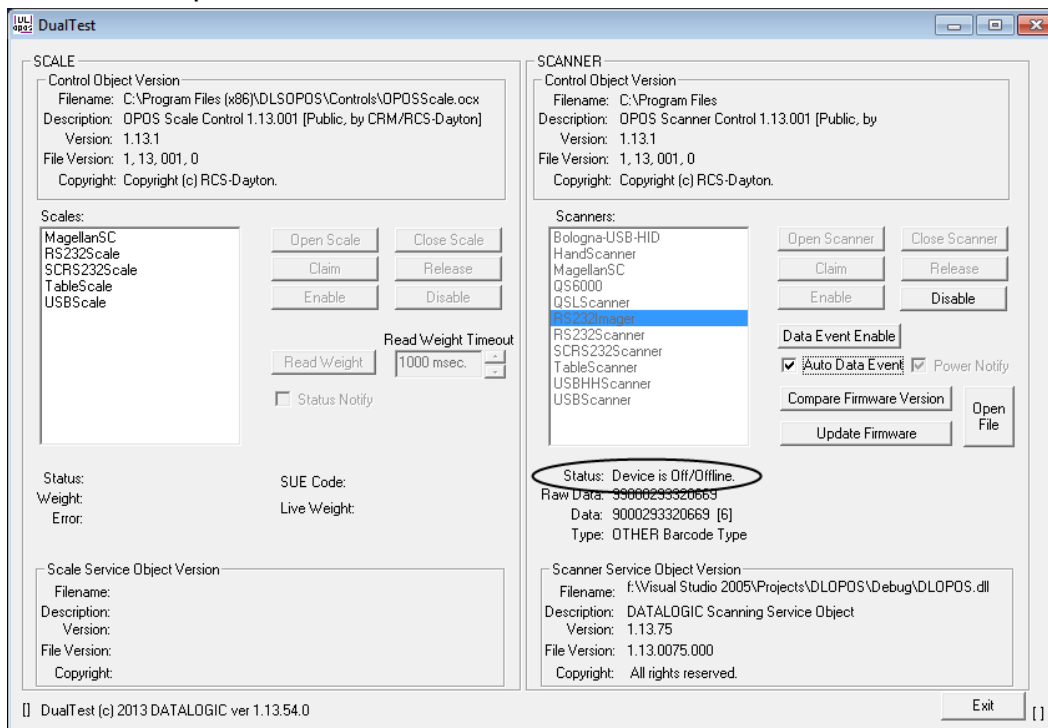
5. Enable:



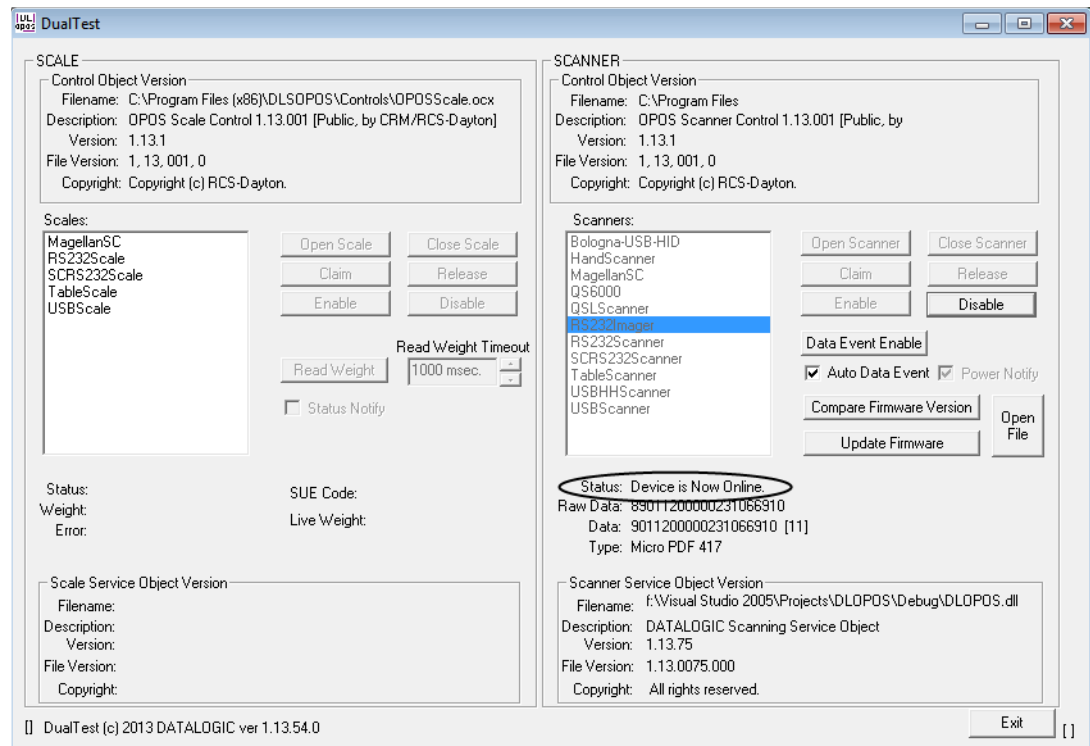
6. Click the “DataEventEnable” button and check the “AutoDataEventEnable” box, and scan a bar code. The bar code data and type will be displayed as shown here:



7. Unplug the Scanner from the system. Power Status will show the new scanner power state.



- Plug the scanner back into the system. Power Status will update again with the new scanner power state.



Firmware Update with DualTest

The Datalogic OPOS Scanner Service Object supports the ability to update firmware on select scanners in accordance with the UPOS Specification (version 1.9 and above). The user's application may be written to take advantage of this capability in the service (see the UPOS specification for details). In addition, the DualTest application bundled with Datalogic's services supports this capability and may be used to upgrade firmware on select scanners. The following screen shots represent the steps used to upgrade firmware on a scanner that supports this ability using DualTest.



CAUTION

IMPORTANT NOTE to OPOS programmers:

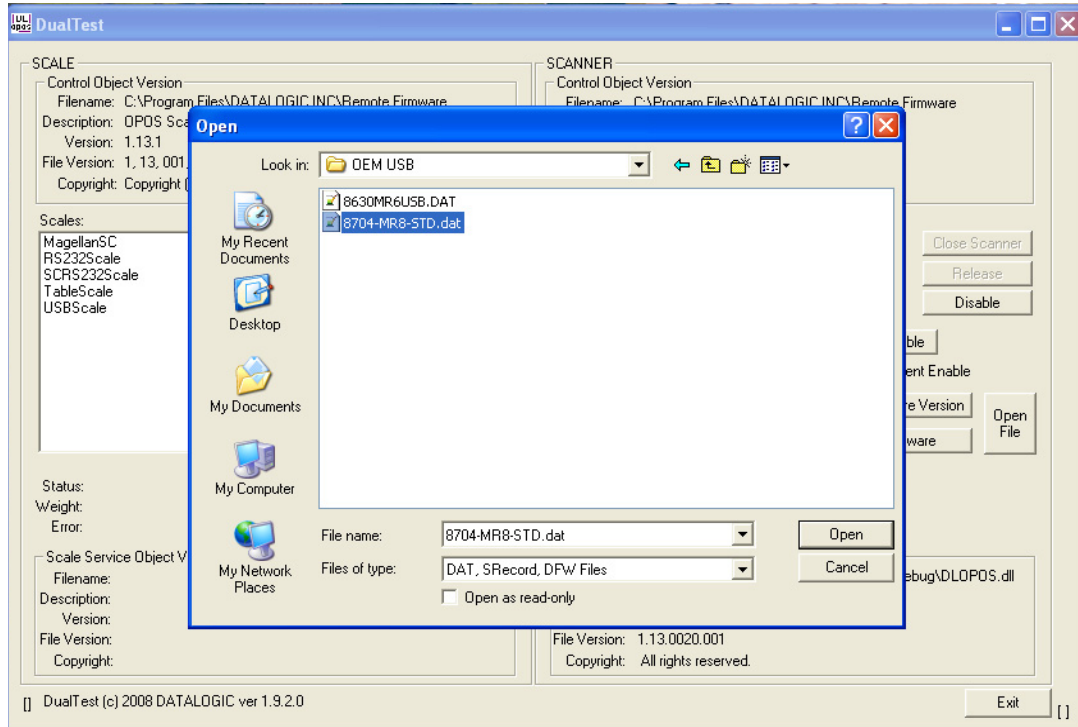
Prior to performing a firmware update on a scanner, the Scale Service Object should be closed. Failure to follow this step could lead to firmware update failure and an inoperative scanner.

To perform the firmware update, start DualTest and follow the steps in the previous section to Open and Claim the scanner. Then perform the follow-

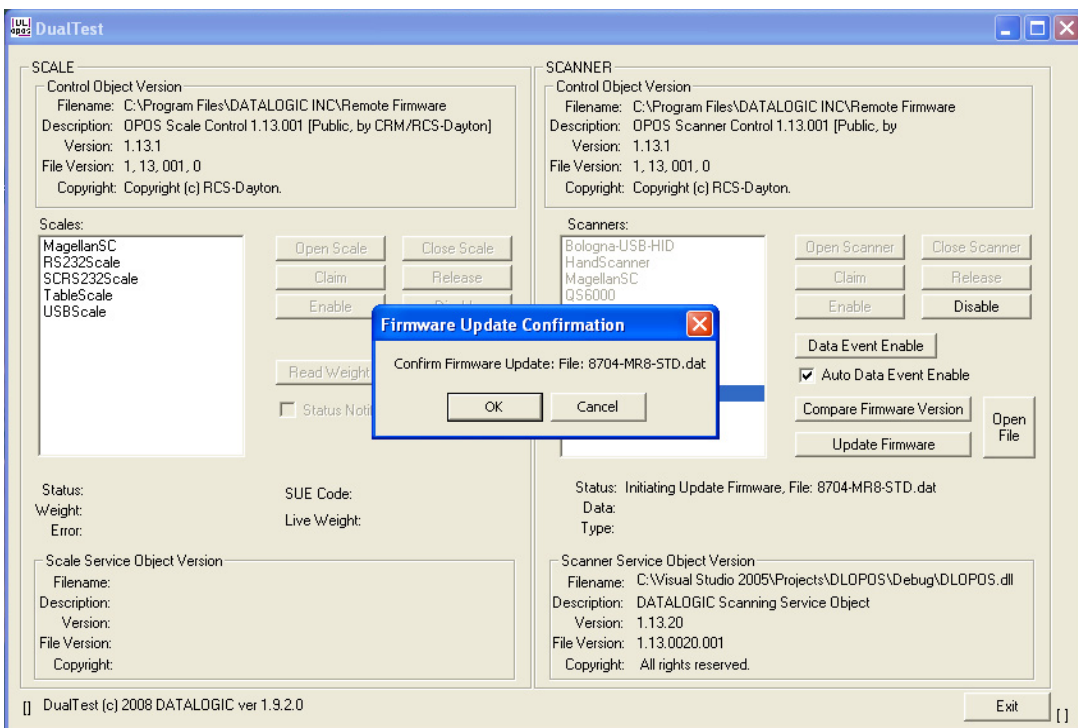
1. OpenFile: Locate the firmware file on your machine or network.



Firmware files are interface and scanner specific and may be obtained from Datalogic Tech Support.



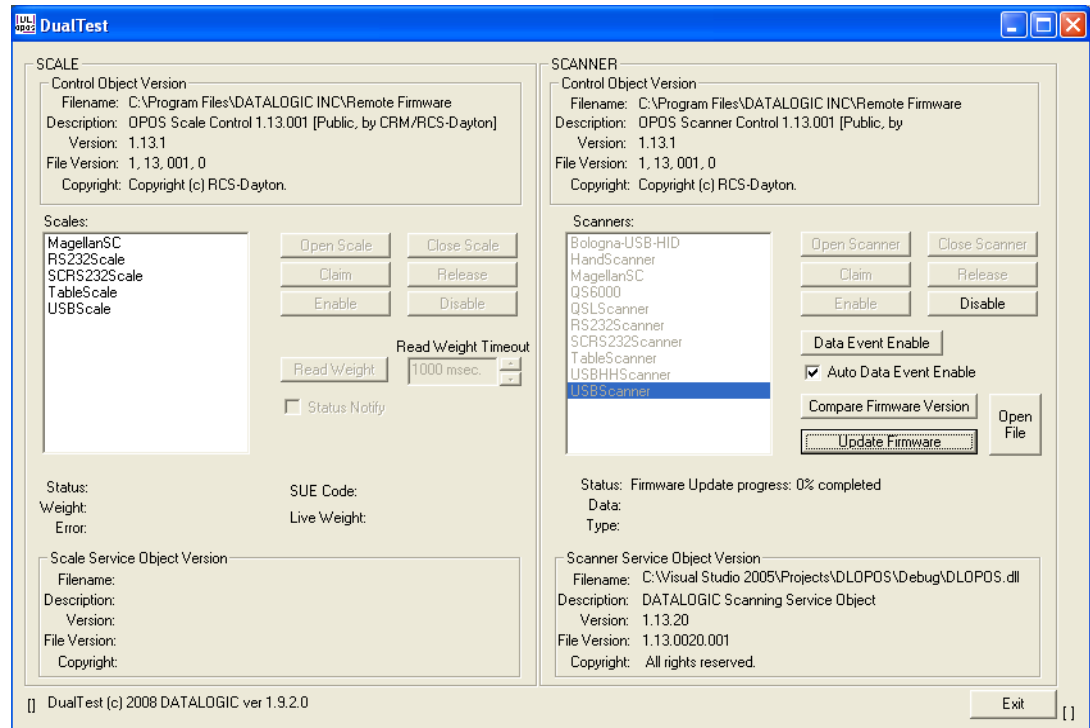
2. Confirm Update Firmware:



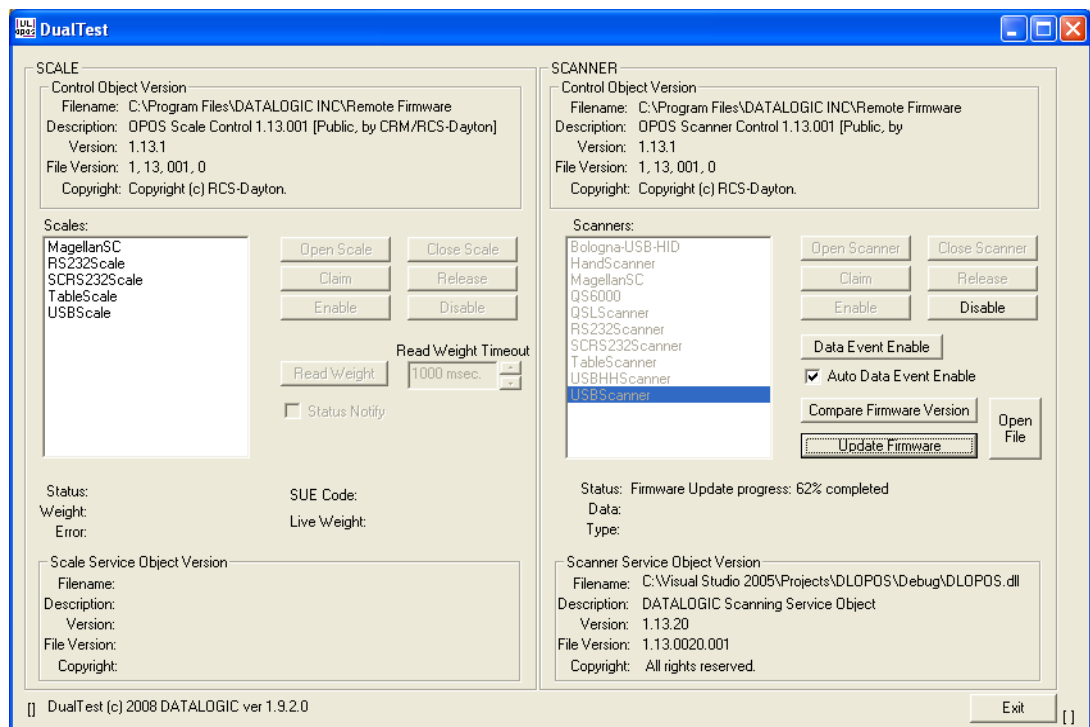
Firmware Update Started

The Status field will update at every 1% of the upload. Depending on the scanner interface and parameters such as baud rate, the update may take from approximately 7 minutes to 40 minutes.

DO NOT disconnect the interface cable or power cable from the scanner during the update!

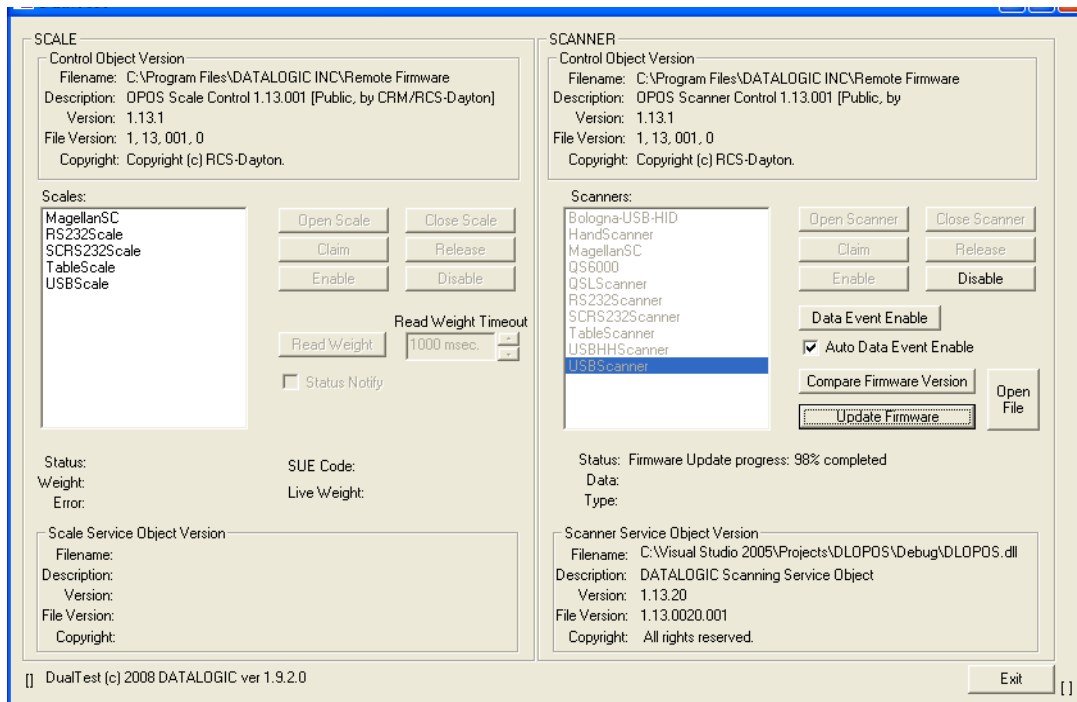


Update in progress, at 62% complete:

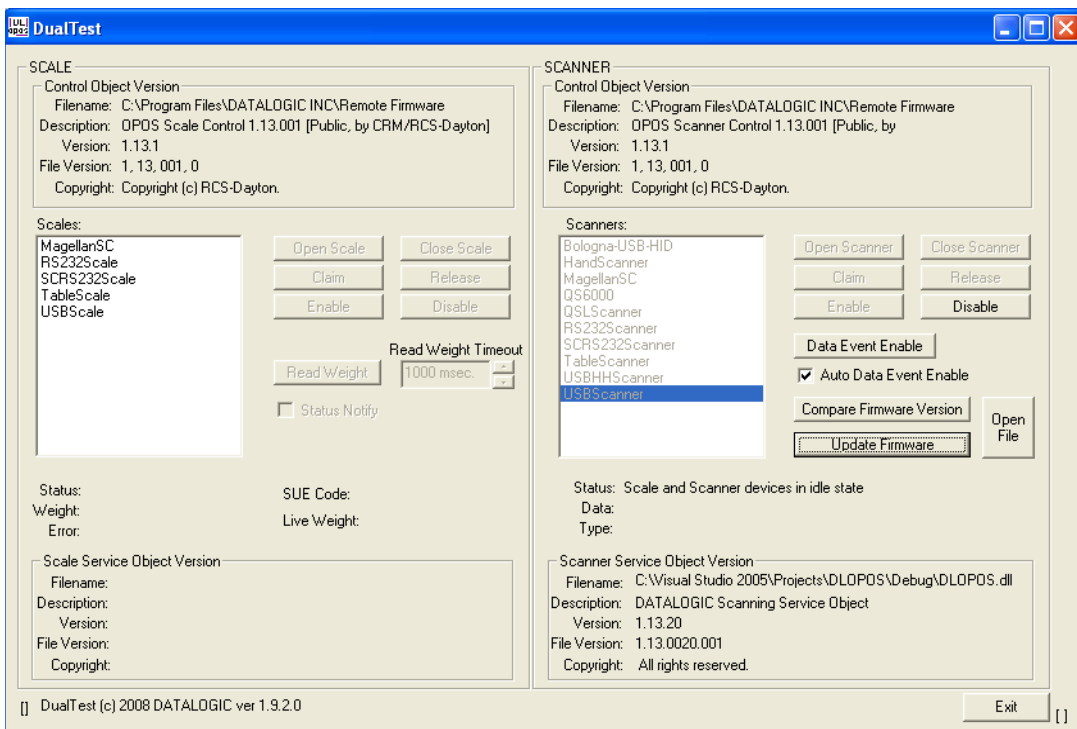


Firmware Update Finished

NOTE that the service will stop at 99% complete until the scanner reboots and comes on line, which may take several seconds.



Finalized: The scanner is now back on line and fully operational.

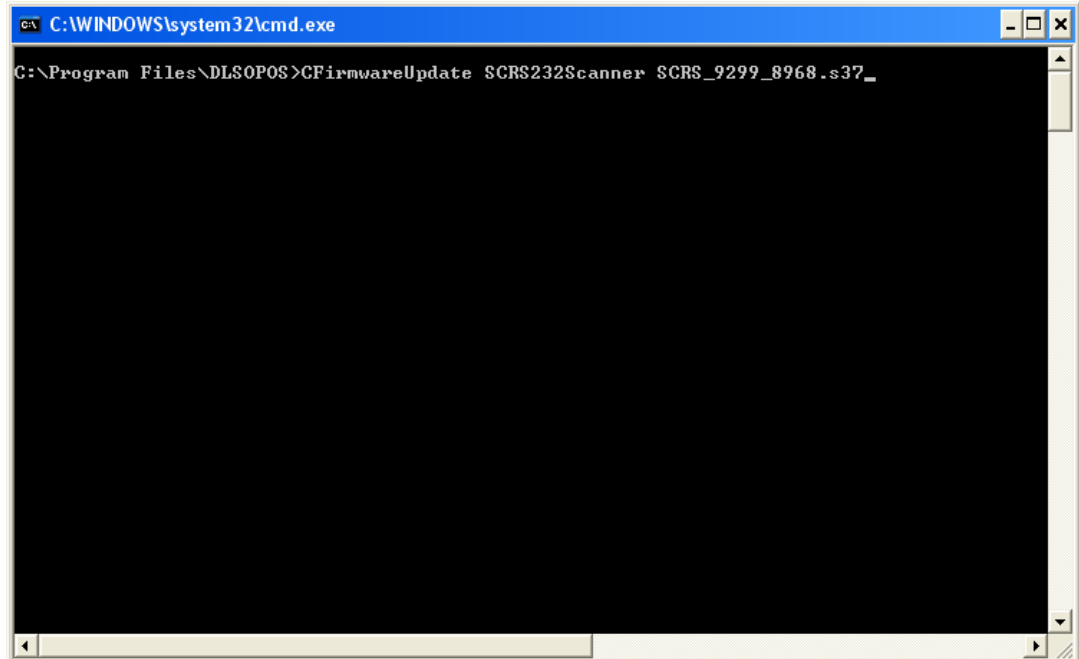


Firmware Update from the Command Line

1. Navigate to the install directory.

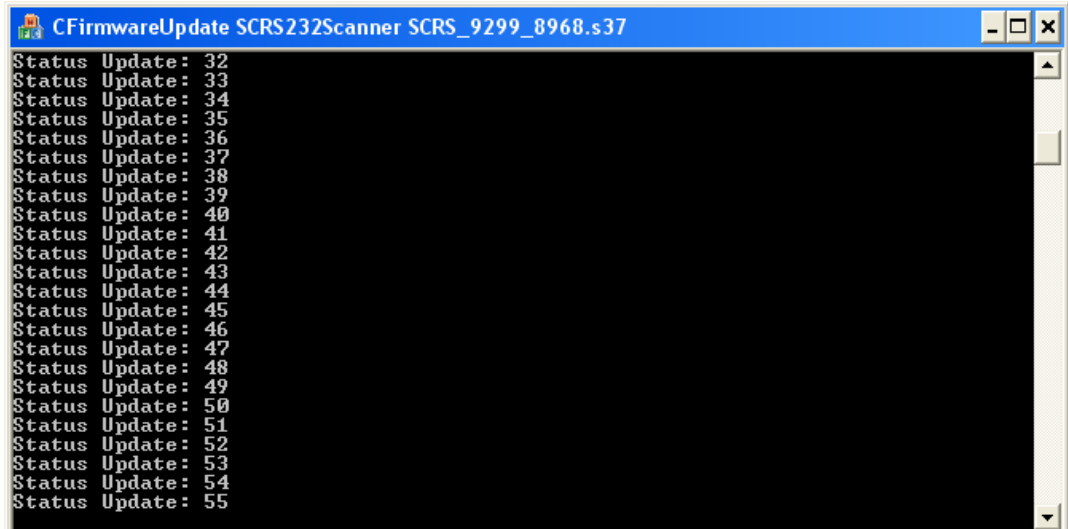
2. Execute the update program:

```
CFirmwareUpdate <ScannerName> <FirmwareFileName.ext>
```



A screenshot of a Windows command prompt window. The title bar reads "C:\WINDOWS\system32\cmd.exe". The command prompt shows the current directory as "C:\Program Files\DLISOPOS" and the command being executed as "CFirmwareUpdate SCRS232Scanner SCRS_9299_8968.s37_". The rest of the window is black, indicating the program is running.

3. Wait until the program finishes:



A screenshot of the CFirmwareUpdate program's output window. The title bar reads "CFirmwareUpdate SCRS232Scanner SCRS_9299_8968.s37". The output shows a series of "Status Update:" messages with numbers from 32 to 55, indicating the progress of the firmware update.

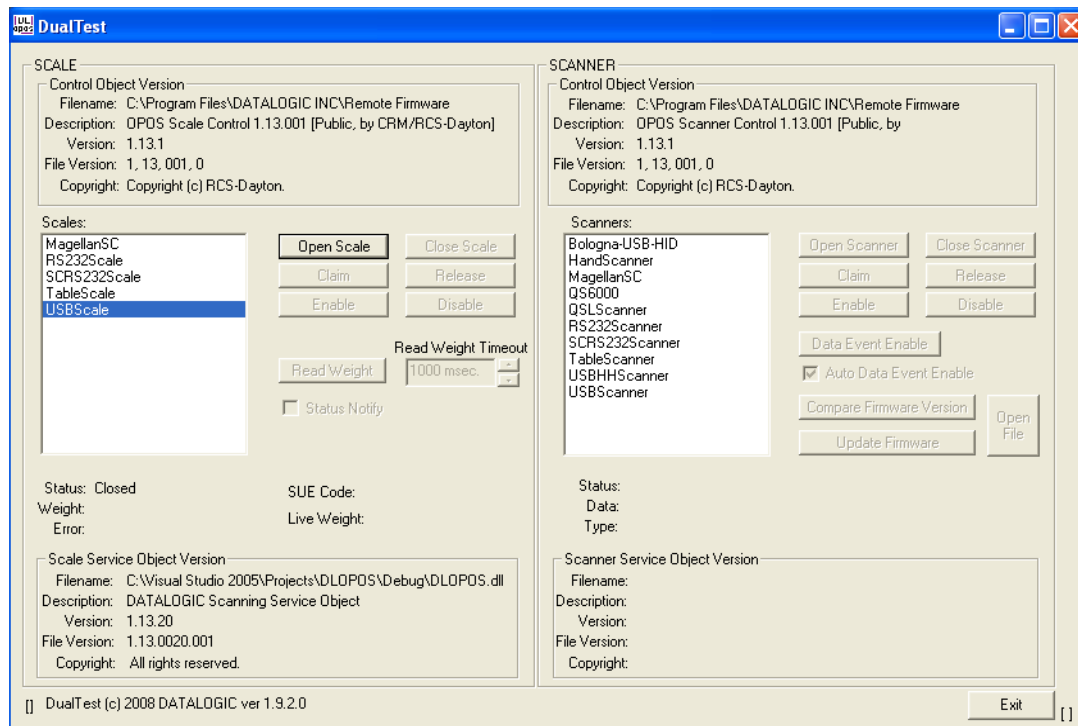
```
Status Update: 32
Status Update: 33
Status Update: 34
Status Update: 35
Status Update: 36
Status Update: 37
Status Update: 38
Status Update: 39
Status Update: 40
Status Update: 41
Status Update: 42
Status Update: 43
Status Update: 44
Status Update: 45
Status Update: 46
Status Update: 47
Status Update: 48
Status Update: 49
Status Update: 50
Status Update: 51
Status Update: 52
Status Update: 53
Status Update: 54
Status Update: 55
```

4. After program exits, update is complete.

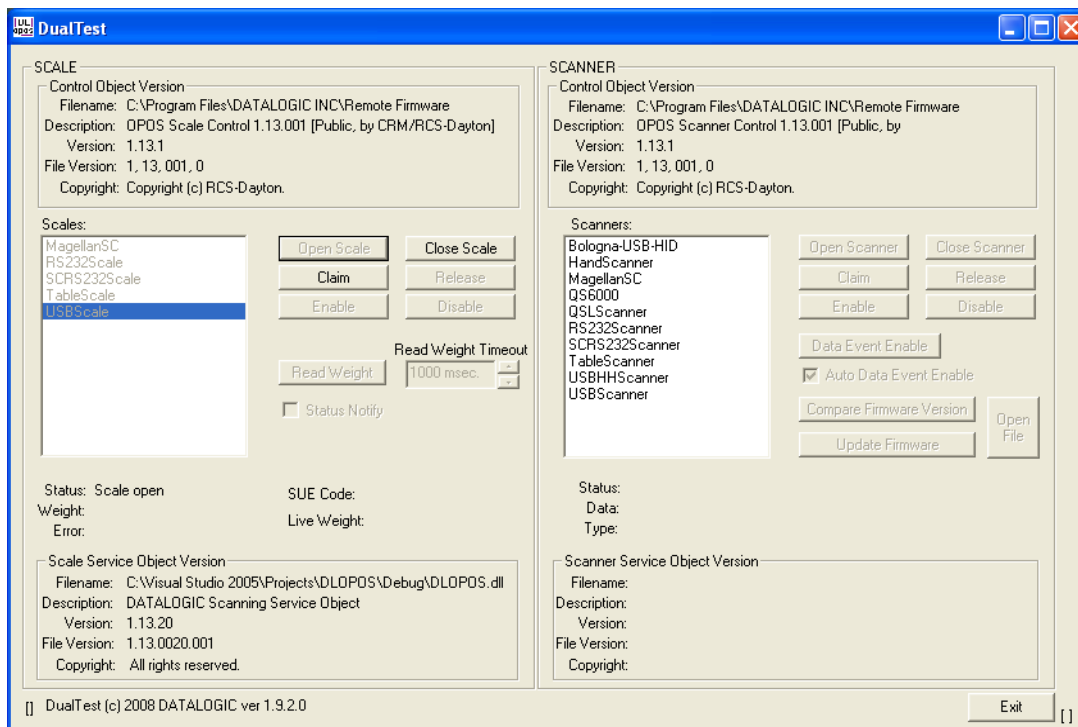
Scale with DualTest

To connect to a Scale, follow these steps after installing the OPOS package from Datalogic:

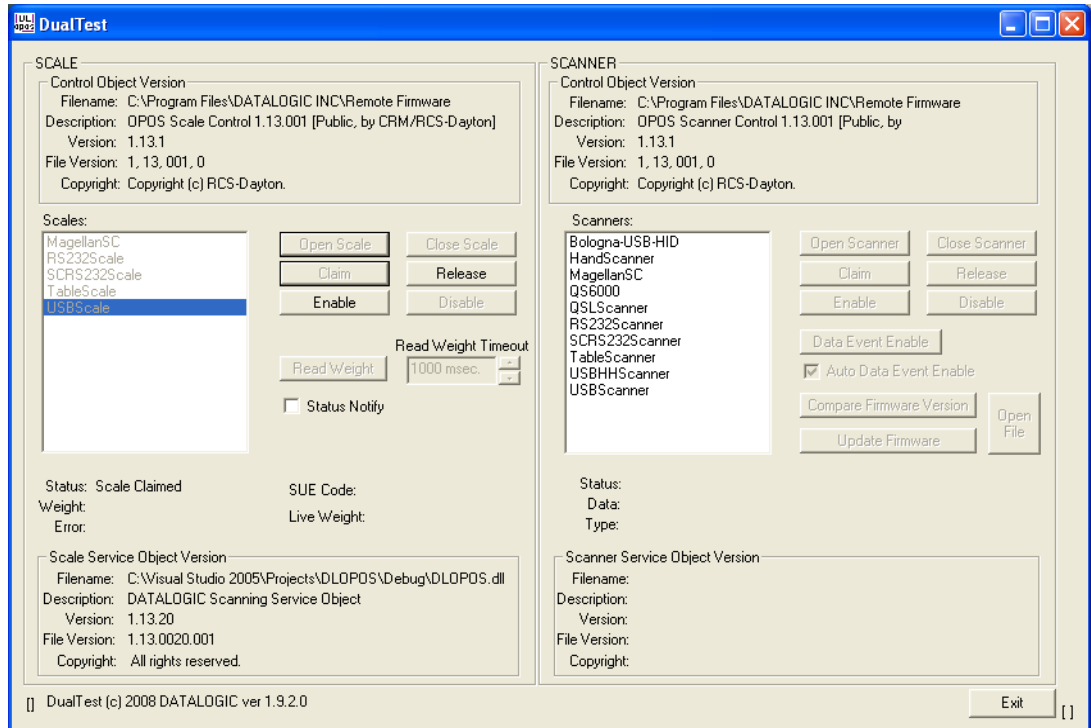
1. Select Device:



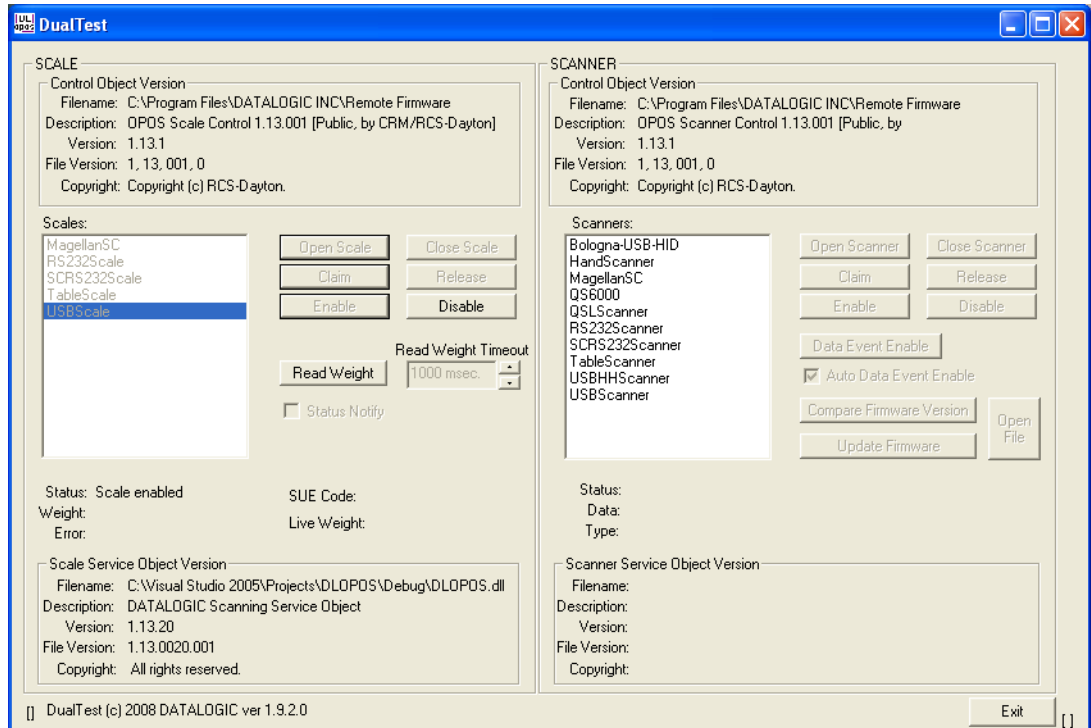
2. Open Scale:



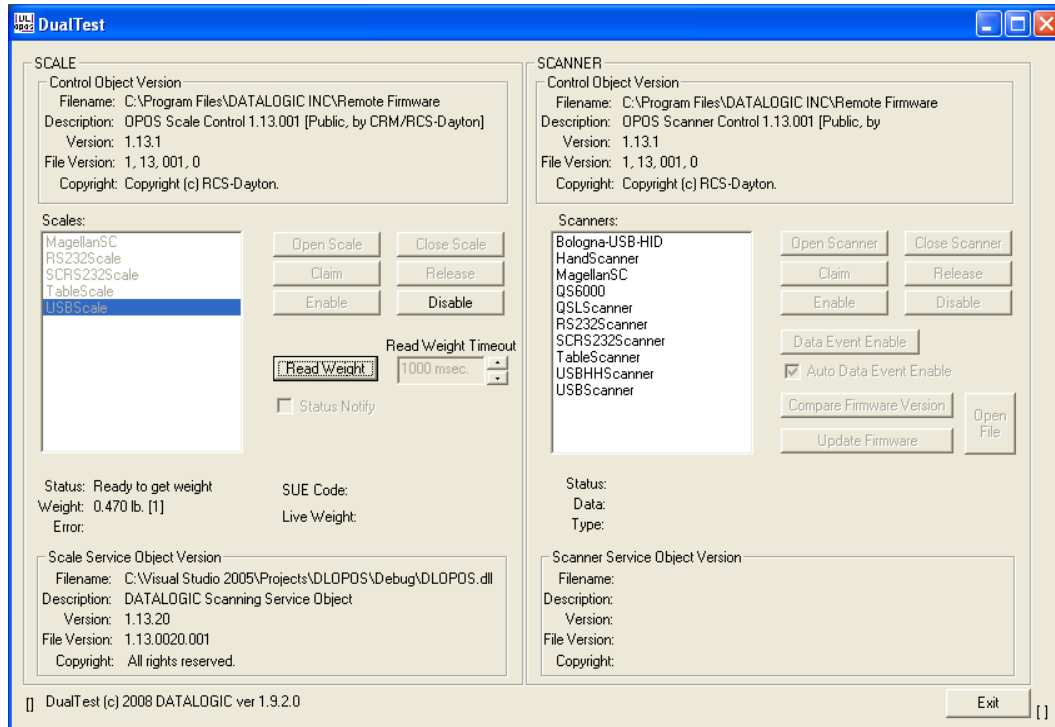
3. Claim:



4. Enable:



5. Read a weight:



Live Weight Display

The Datalogic OPOS Scale Service Object supports the ability to provide Live Weight Display functionality in accordance with the UPOS Specification (version 1.9 and above). The user's application may be written to take advantage of this capability in the service (see the UPOS specification for details). In addition, the DualTest application bundled with Datalogic's services supports this capability and may be used to demonstrate Live Weight Display function with a Datalogic scanner/scale. The following screen shots represent the steps used to activate Live Weight Display with a scale using DualTest.

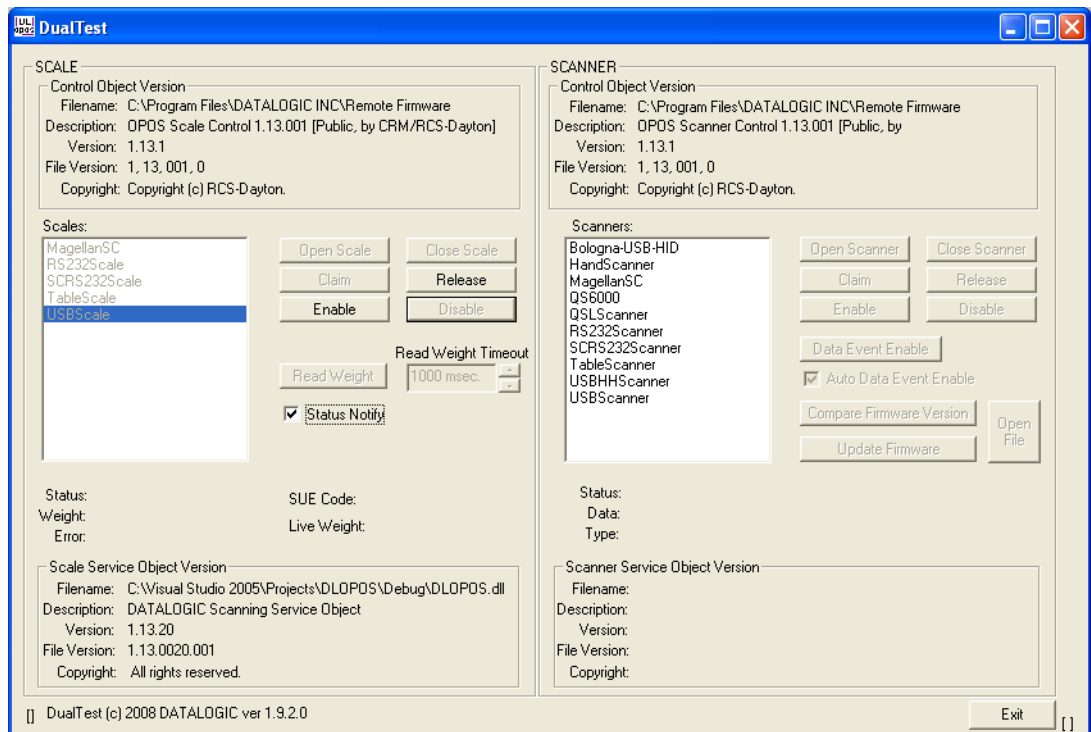
IMPORTANT NOTE to OPOS Programmers:



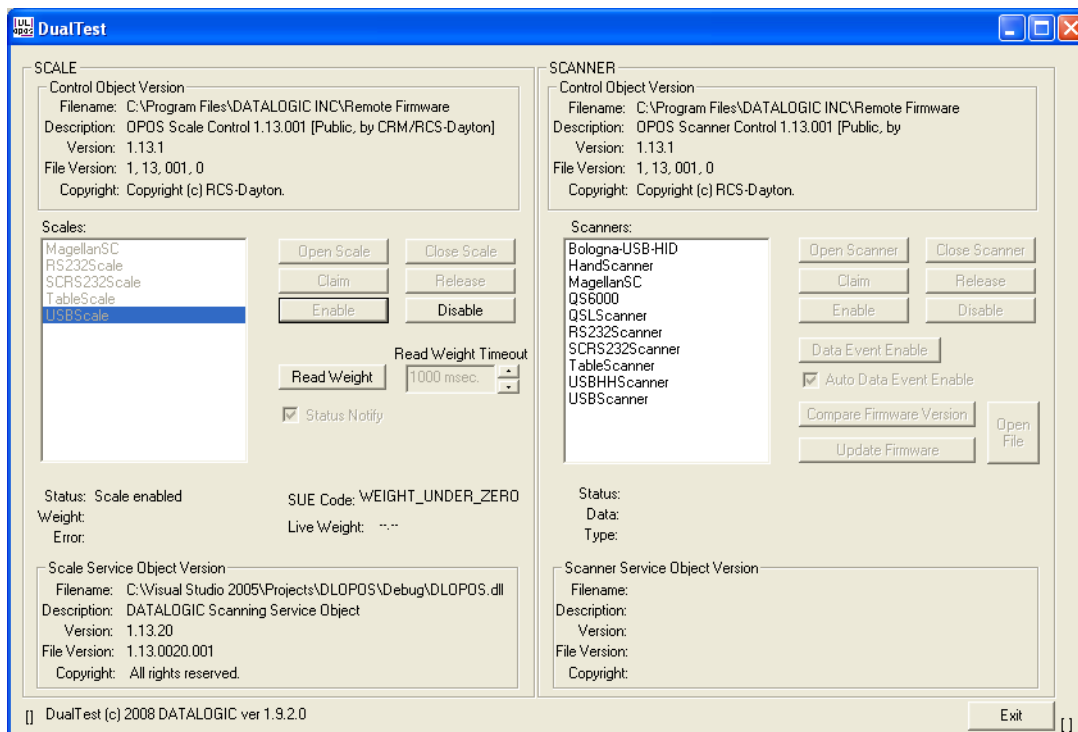
PIDXScal_StatusNotify must be set **TRUE** while the scale is **NOT** Enabled. As per the UPOS specification, setting **PIDXScal_StatusNotify TRUE** after the scale has been Enabled will not activate the Live Weight Display function in the scale service object.

To demonstrate Live Weight Display, start DualTest and follow the steps to Open and Claim the scale, as described in the previous section. Then perform the following steps:

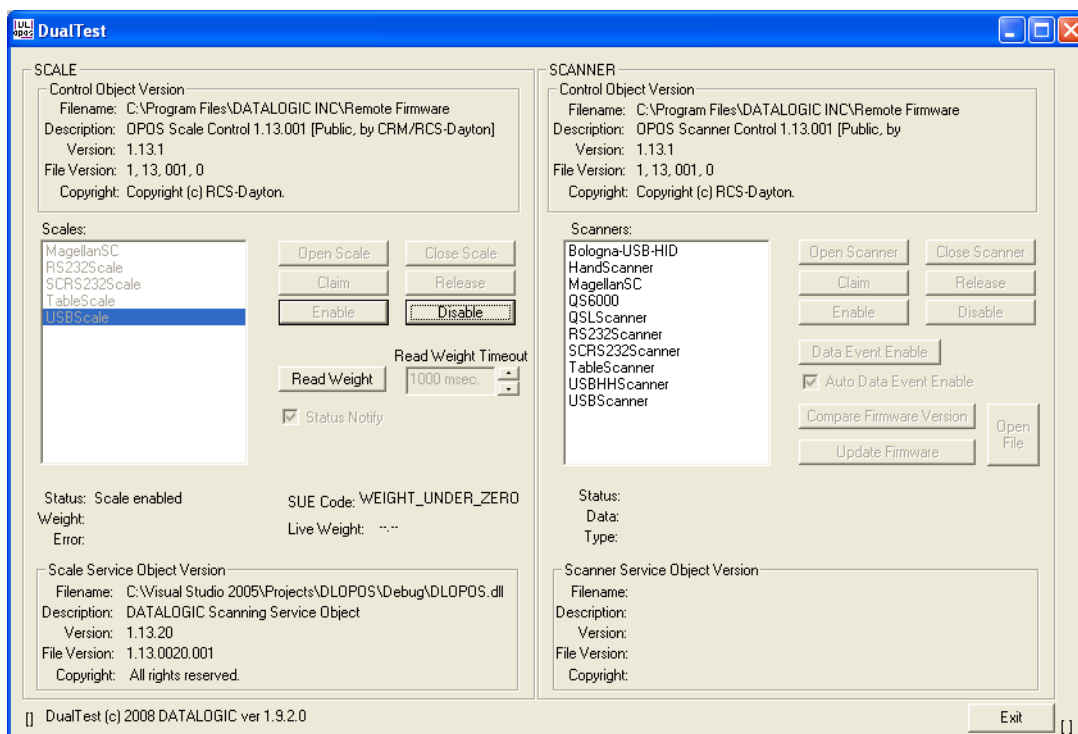
1. Set Status Notify True: Click the "Status Notify" check box.



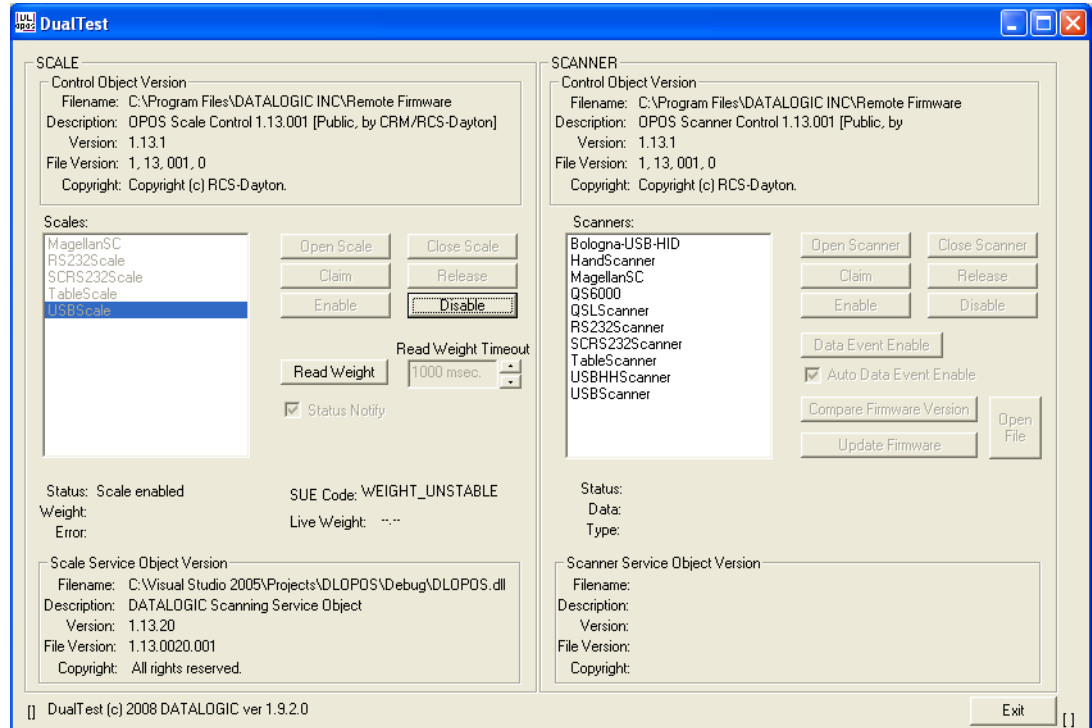
2. Enable: (Live Weight Begins immediately / Zero Weight)



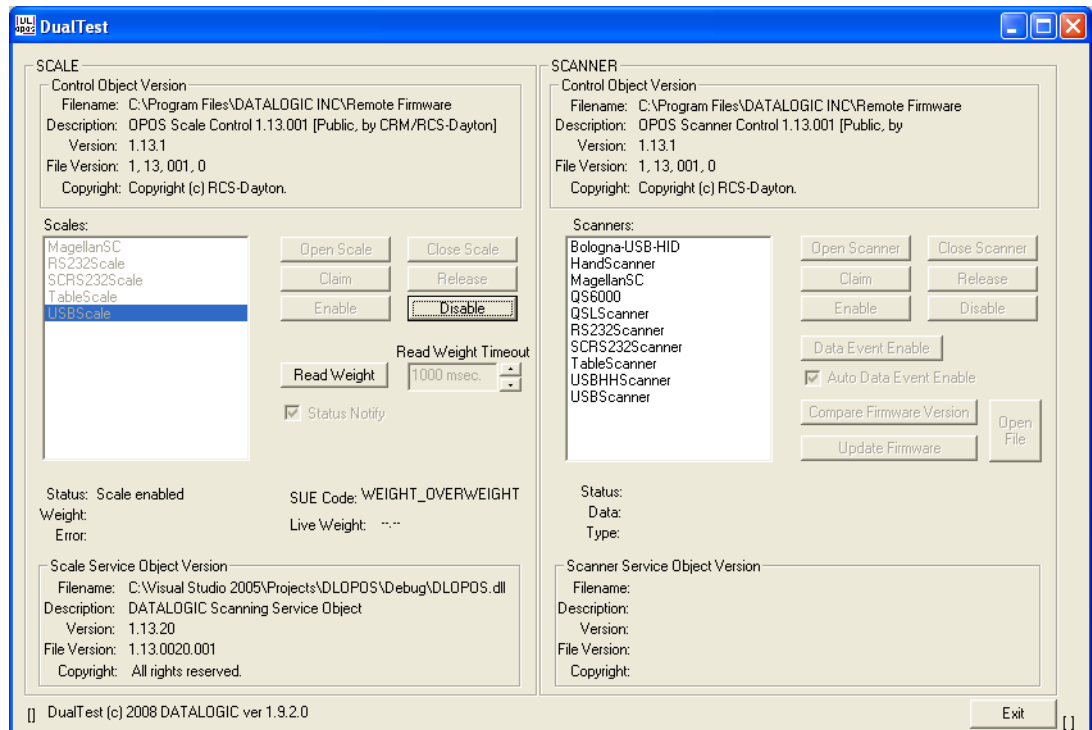
3. Underweight: An under zero condition has occurred.



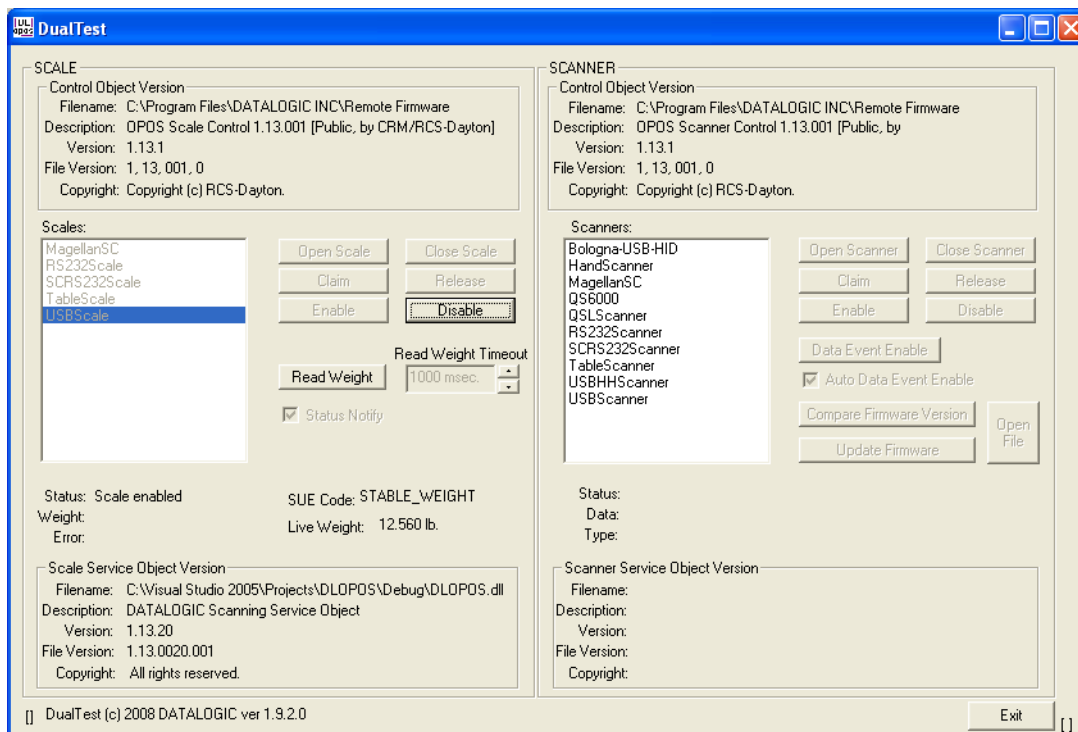
4. In motion: The scale is in motion and has not stabilized.



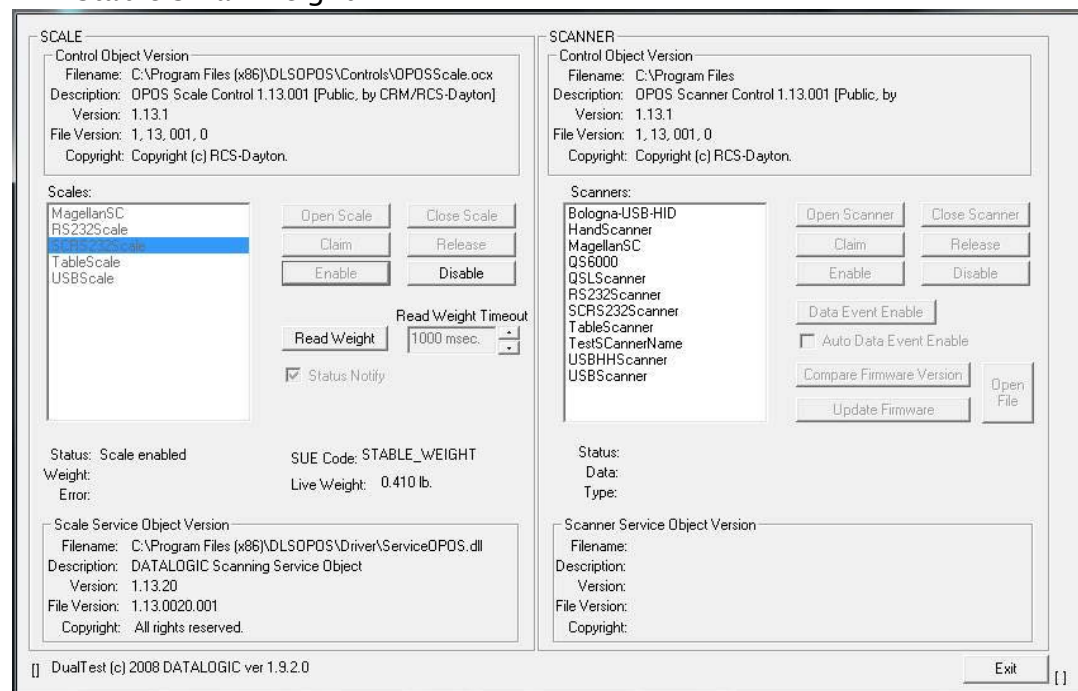
5. Overweight: The scale's weight capacity has been exceeded.



6. Stable Large Weight:



7. Stable Small Weight:



Registry

Windows Management Instrumentation (WMI) Compatible

Datalogic OPOS Service Objects provide WMI compatible Remote Management for certain scanners when properly configured. For scanners that support this data gathering capability, the Service Objects must be configured via registry settings to provide scanner data to the WMI data store. There are two registry settings that must be active to pull data from the scanner and provide it to the WMI data store: “**CheckIHSONClaim**” and “**WMIONClaim**” must both be set = 1. When these settings are active, each time the scanner is “claimed” by an OPOS application, the service will query the scanner and send the information to the WMI data store. Any WMI-data gathering application will then have access to the data. As noted in the registry section below, these settings are defaulted to “active” upon installation. Note that this process may have a small impact upon system performance.

The data provided to the WMI database follows the format as specified in the UPOS specification, Appendix I, “Systems Management Information”, which is modeled on the Common Information Model (CIM) from the DMTF. This standard provides a means of Remote Management of Datalogic scanner/scales under the Windows Management Instrumentation process.

The default WMI repository:

```
root\CIMV2
```

contains two class definitions for statistics information:

- **UPOS_Scanner**
- **UPOS_Scale**

There will be one instance of each class per unique serial number identified scanner used by an OPOS object.

OPOS Registry

Datalogic OPOS Service Objects use the Windows registry for configuration of the OPOS software. When the OPOS package is installed, the installer creates registry entries under **HKEY_LOCAL_MACHINE\SOFTWARE\OLEforRetail\ServiceOPOS; Scale and Scanner**. Under each UPOS category, there are named entries for each device. Under each name, there are some user-configurable entries that control the operation of the OPOS Service Objects.

The registry system on Windows 64 bit machines has changed where 'default' 32 bit application registry settings are stored. In the registry, all settings will be found under:

```
[HKEY_LOCAL_MACHINE\SOFTWARE\WOW6432NODE\ . . . ]
```

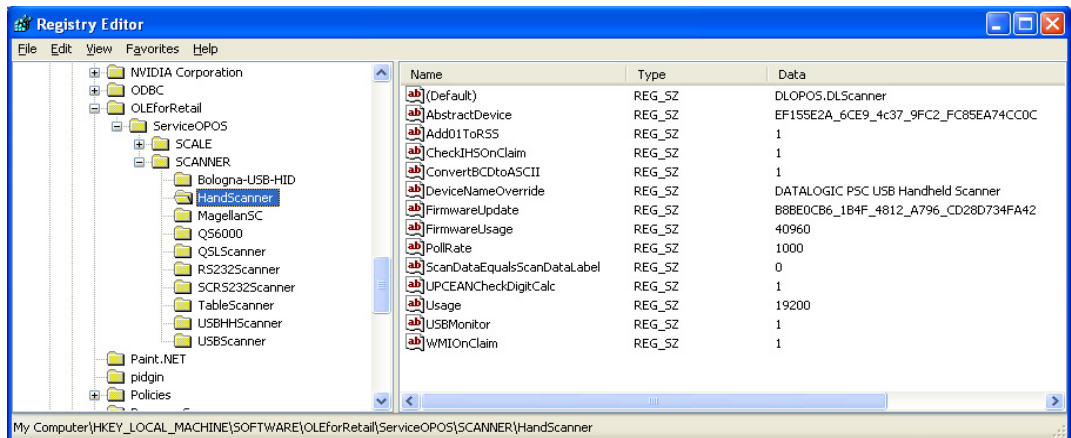


Changing items in the registry does not change corresponding items in the scanner. For example, baud rate can be changed in the RS232Scanner registry, but the baud rate in the scanner must be changed via programming label to match the registry entry, or the Service Object will be unable to communicate to the scanner.

Scanner

Under **SCANNER** in the registry, there are a number of named entities: **HandScanner**, **MagellanSC**, **QS6000**, and so forth. Note that some of these are duplicates that have been maintained for legacy purposes: for example, “**HandScanner**” and “**USBHScanner**” refer to the same device (a handheld scanner running OEM USB interface); “**MagellanSC**” is the same as “**SCRS232Scanner**”; “**TableScanner**” and “**USBScanner**” are equivalent; **QS6000** and **RS232Scanner** are equivalent, **QSLScanner** is a unique entry. The following screen shots cover the important user-configurable registry settings for each category of scanner.

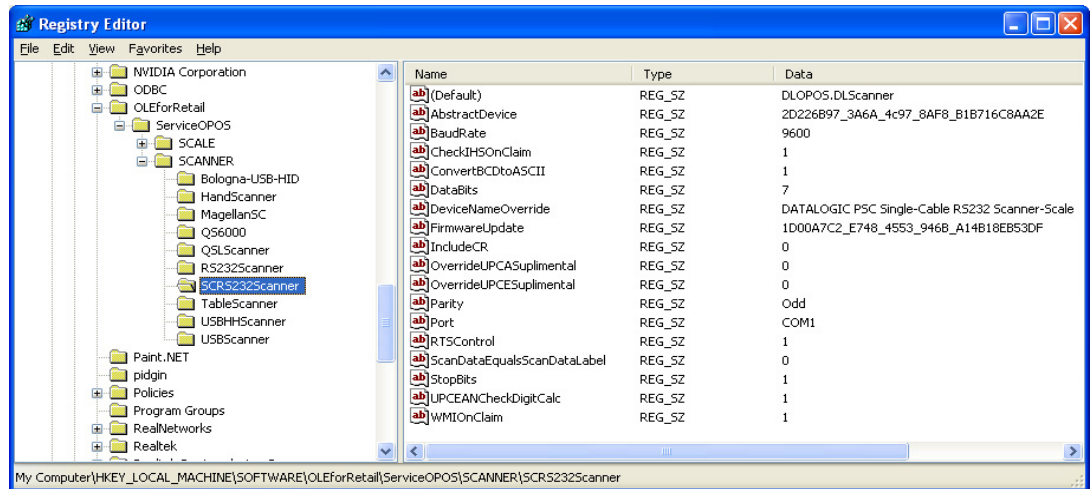
HandScanner = USBHScanner:



- **(Default)** = **DLOPOS.DLScanner** – this is the default name used by the service. The user should not edit this entry.
- **AbstractDevice** – this represents the GUID and should not be edited by the user.
- **Add01ToRSS** – defaulted to active (1), if the scanner does not return a “01” at the start of a Databar label, the service will add the “01” if this item is active.
- **CheckIHSONClaim** – defaulted to active (1). When 1, the service will request information–health–statistics data from the scanner each time it is “claimed”.
- **ConvertBCDtoASCII** – defaulted to active (1), the service will convert any label sent in BCD format to ASCII.
- **DeviceNameOverride** – this is the name reported by OPOS as the “device name” in the OPOS object. If the user’s application is coded to use a certain specific name, the user can insert that name here.
- **FirmwareUpdate** – Firmware endpoint GUID, user should not modify this entry.
- **FirmwareUsage** – this is the USB “usage” for the firmware endpoint, in decimal (the USB spec defines this in hexadecimal). User should not modify this entry.
- **Pollrate** – this is the period, in milliseconds, that the service polls the scanner for connection.
- **ScanDataEqualsScanDataLabel** – default is off. This will make the ScanData property always equal the ScanDataLabel property.

- **UPCEANCheckDigitCalc** – defaulted to active, the service will calculate the check digit for a UPC/EAN label if it is not present on the scanner interface, and append this to the data in the ScanDataLabel property.
- **Usage** – this is the USB “usage” for the scanner device. (The USB spec defines this in hexadecimal). User should not modify this entry.
- **USBMonitor** – defaulted to active, the service will periodically ensure that the scanner and host “enable” state is the same.
- **WMIONClaim** – defaulted to active, the service will compile WMI data upon “claim” of the device. This may slow down the claim process slightly.

MagellanSC = SCRS232Scanner



Common fields as per Handheld scanner above; in addition the following fields are:

- **BaudRate** – default to 9600.

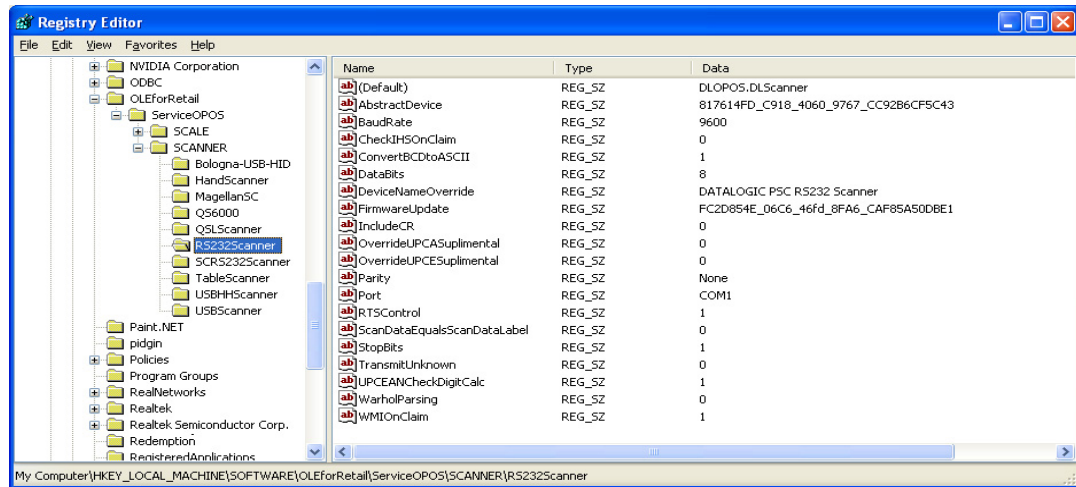


Changing this value **REQUIRES** changing the scanner to a matching value – failure to do so will result in failure to communicate!

- **DataBits** – default to 7, same caveat as for baud rate.
- **OverrideUPCASuplimental** – default not active; can be used in certain circumstances to differentiate label+addon from label only packet. This setting would rarely need user modification.
- **OverrideUPCESuplimental** – default not active; can be used in certain circumstances to differentiate label+addon from label only packet. This setting would rarely need user modification.
- **Parity** – defaults to Odd to match scanner default on SC RS232 interface, same caveat as for baud rate.
- **Port** – defaults to COM1. User can change as needed to match system com port.

- **RTSControl** – defaulted to active. Service will set CTS line active at the host port and leave it set high.
- **StopBits** – defaulted to 1, same caveat as for baud rate.

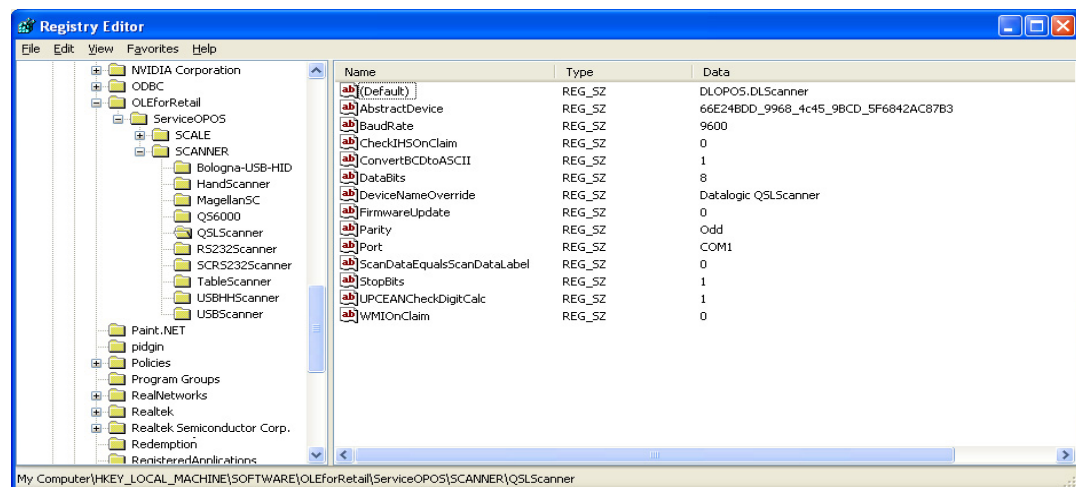
RS232Scanner = QS6000



Common fields as above; in addition the following field is:

- **IncludeCR** – This will add a {0x0D} to the end of barcodes. Default off.
- **TransmitUnknown** – when set to 0, the service will not send barcodes to the application if the symbology is unknown. When set to 1, all barcode data will be sent to the application, regardless of the value of ScanDataLabel (symbology type). Default is 0.
- **WarholParsing** – defaults to not active. When using a QD21xx, QD23xx, PD71xx, or GD41xx handheld scanner, the user should set this to active and select the “RS232 OPOS” interface in the scanner programming guide. This setting enables correct identification of Label Ids from the scanner through the Service Object.

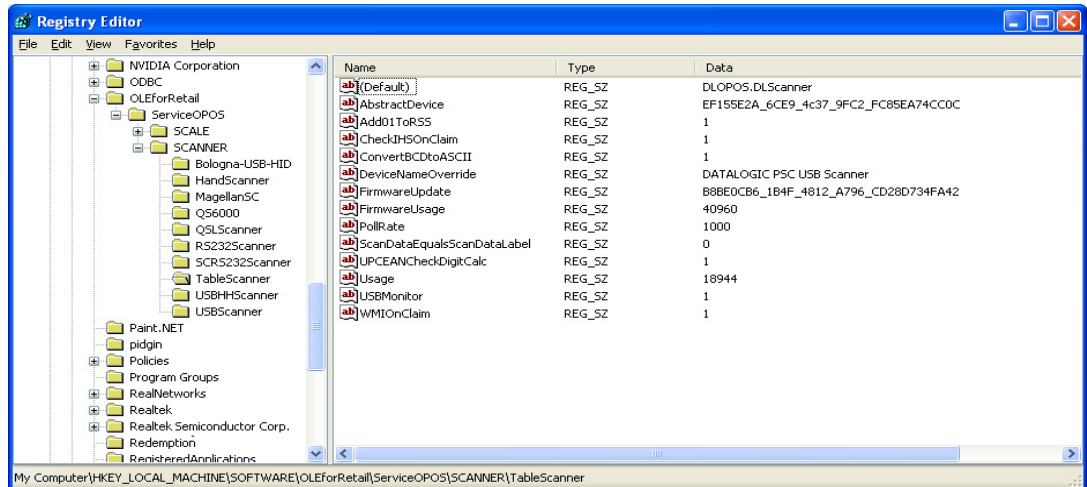
QSLScanner



There are no unique fields for this scanner, but some of the settings default to different values because of limited capabilities:

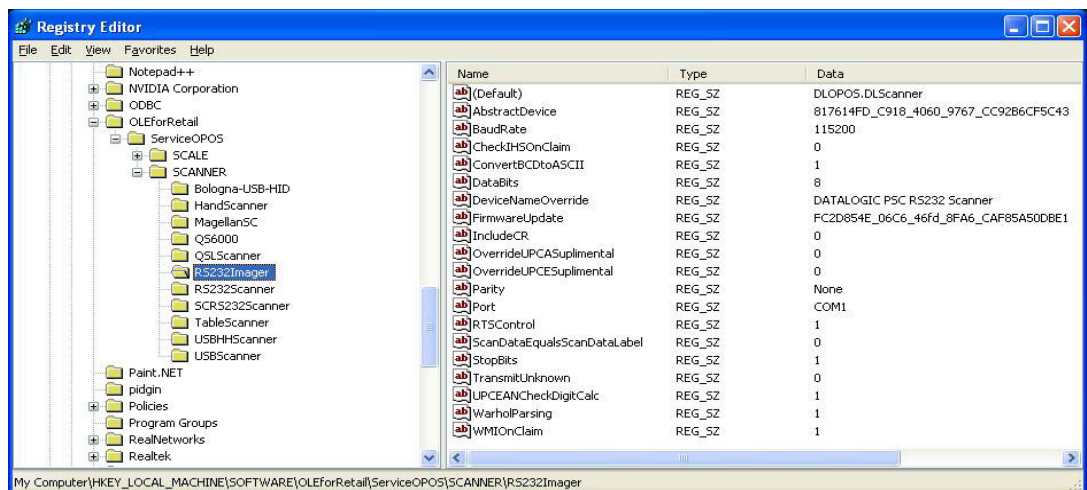
- **FirmwareUpdate** - defaults to 0; this device cannot be updated by the service.
- **CheckIHSONClaim** - defaults to 0; this device does not support commands needed to determine scanner health and status.

TableScanner = USBScanner



Settings are identical to **USBHHSscanner/HandScanner**, except that **Usage = 18944** (4A00 hex), and **DeviceNameOverride = "...USB Scanner"**.

RS232Imager



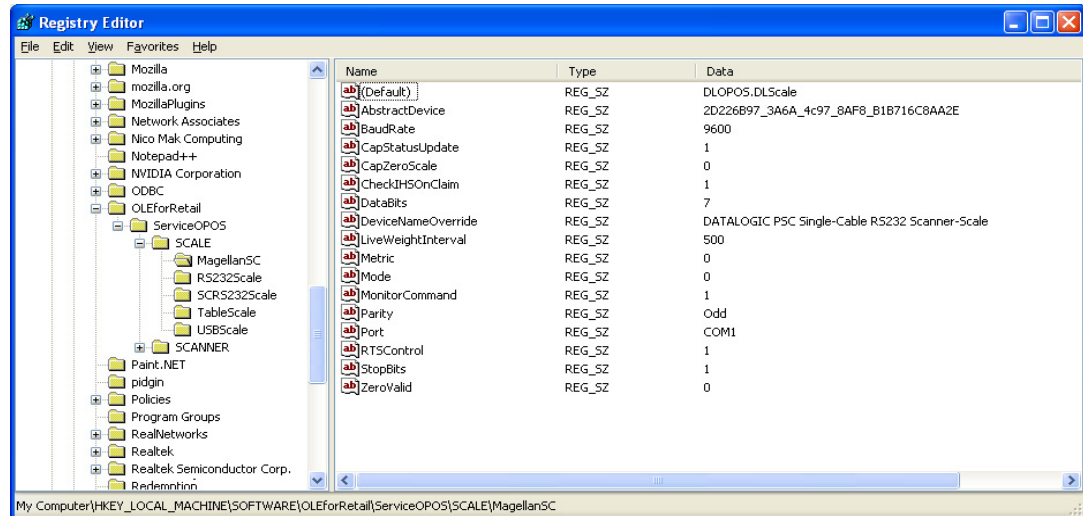
The RS232Imager utilizes a 115,200 baud rate and enhanced parsing capabilities. These registry items are turned on for this scanner type.

- **UseVirtualPort** - when set to 1, the service will look for a virtual com port and ignore the Port number if it finds a virtual port (USB COM device). If set to 0, the Port = COMn setting will be used.

Scale

Under the **SCALE** in the registry, there are five named entities. Some are redundant and have been maintained for legacy applications. The following screen shots cover the important user-configurable settings for each category of scale.

MagellanSC = SCRS232Scale



IMPORTANT NOTE: COM port settings for this scale device are identical to the corresponding scanner names; this is because the two devices share the same COM port and must use the same communication parameters. The same caveats apply to changing these values in the registry and scanner/scale – the settings must match.

- **CapStatusUpdate** – defaulted to 1, this indicates that the scale service is capable of supplying Status Update events as per the UPOS **Live Weight Display** description in the scale section of the UPOS spec.
- **CapZeroScale** – defaulted to not active. The Single Cable scale does not support host zeroing of the scale.
- **LiveWeightInterval** – default to 500; this is the poll rate in milliseconds that the scale service polls the scale for weight in the case of **Live Weight Display** enabled.



The user should never set this value below 250 msec.

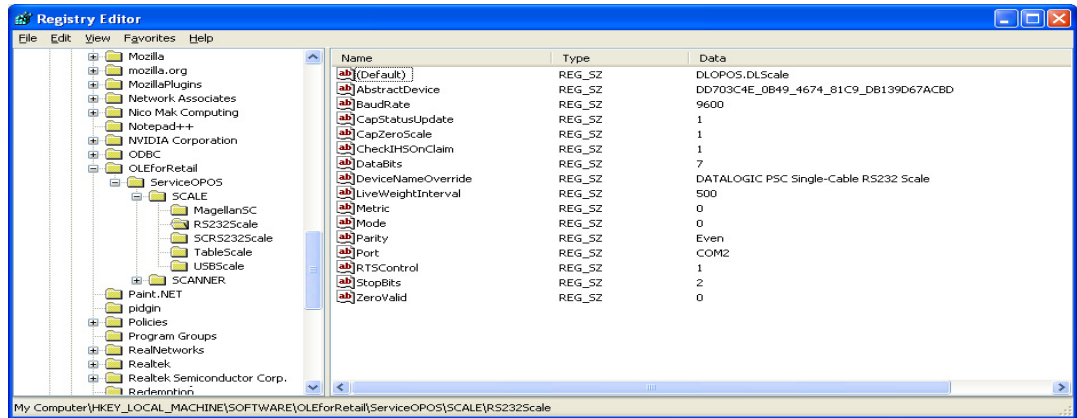
- **Metric** – defaulted to 0. This setting controls the type of Weight Request sent to the scale by the service; the default is English Weight Request. The user can set this to 1 to obtain Metric weights.



The scanner/scale must be programmed to the same data type or weight requests will fail.

- **ZeroValid** – defaulted to Active. When active, the service will deliver a stable zero weight as a valid weight to the host. When set to 0, the service will follow the pre-1.13 UPOS specification and not deliver zero as a valid weight (this setting is used by some customers to maintain a live weight display outside of the UPOS specification).

RS232Scale



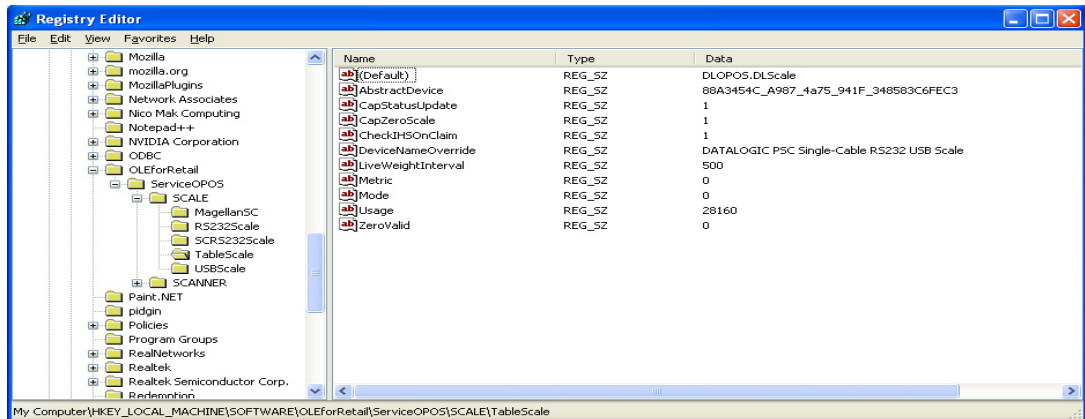
- **CapZeroScale** – defaulted to Active, the scale service can zero the scale through the interface.
- **Port** – defaulted to COM2. The user can select the desired COM port for their system.



This **MUST** be a different COM port than the associated Scanner port.

- **BaudRate** – defaulted to 9600. The user should not change this setting, as the scale baud rate is NOT configurable.
- **DataBits** – set to 7. The user should not change this setting, as the scale data bits are NOT configurable.
- **Parity** – set to Even. The user should not change this setting, as the scale parity is NOT configurable.
- **StopBits** – set to 2. The user should not change this setting, as the scale stop bits are NOT configurable.

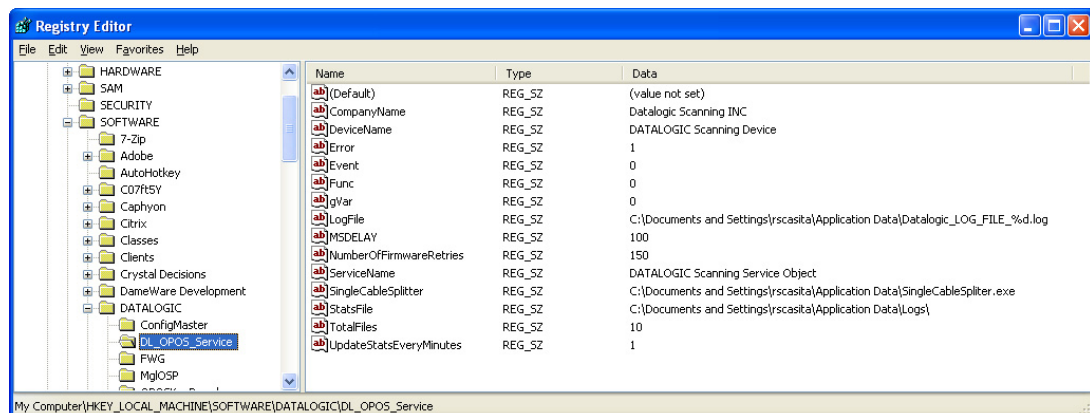
TableScale = USBScale



Logging

The DLS Service Objects have the ability to log various data items to a file for reporting, troubleshooting, and monitoring. The logging level is controlled by registry settings under the location: **HKEY_LOCAL_MACHINE\SOFTWARE\DATALOGIC\DL_OPOS_SERVICE**.

By default, only Error logging is turned on upon installation. If desired, the user can log various reporting levels by turning on settings.



The location of log files is shown under the **LogFile** name; the default path is as shown above. Total number of log files is defaulted to 10. Note that when all logging features are turned on, the logs will become very large. Logging should normally be left in the “error” mode only to conserve system resources.

Levels

Error – defaulted Active; logs only OPOS errors.

Event – defaulted Off; if set active, the service will log OPOS events.

Func – defaulted Off; if set active, the service will log all function entry/exit.

gVar – defaulted Off; if set active, the service will log variable values.

Registry Service Properties

- **CompanyName:** Value is the name displayed in the Service Object. This value should not be changed.
- **DeviceName:** Value is the name displayed in the Service Object. This value should not be changed.
- **LogFile:** Contains the location where the log files are written. Changing this value may cause logging failures under Windows 7 and newer operating systems.
- **MSDELAY:** Contains the global lock feedback timeout. This value should not be changed.
- **NumberOfFirmwareRetries:** Value is the number of times to retry connecting to the scanner after firmware update. This value should not be changed.
- **ServiceName:** Value contains the name displayed in the Service Object. This value should not be changed.
- **SingleCableSplitter:** Contains the location of the RS232 Splitter program. This value should not be changed.
- **StatsFile:** Contains the directory to store the .PRF file. Changing this value may cause logging failures under Windows 7 and newer operating systems.
- **TotalFiles:** Controls how many log files to maintain before rolling over. It is recommended not to change this value.
- **UpdateStatsEveryMinutes:** Controls how many minutes between updates of the StatsFile and WMI store. If set to a non-zero value, the OPOS Service Object will query the scanner for statistical information every N minutes, where N is the value of this control, and update the stats file and WMI store.

Additional Logging

The DLS OPOS Service Object can also create two additional logs. A “**Stats-File**” is created every time the scanner is “**claimed**”, provided the “**CheckIHSONClaim**” control is set to active in the scanner registry. This file holds the result of the latest “**info-health-statistics**” call to the scanner, and is overwritten upon each “**claim**”. This file holds information about the scanner that may be of interest to customers, and is similar to the UPOS Statistics data. Entries such as scanner software revision, S/N, hours-on, number of labels scanned, system health, and additional information can be found in this log.

An example is shown in the following screen shot:

```

1 # Raw data from scanner
2 # Info command
3 # bytes received[85] 0x1 0x2 0x41 0x36 0x31 0x30 0x30 0x31 0x30 0x30 0x35 0x3 0x2 0x52 0x30 0x30 0x36 0x38 0x3 0x2 0x43 0x47 0x44
4 # Stats command
5 # bytes received[65] 0x2B 0x50 0x3 0x8 0x0 0x1 0x2 0x50 0x38 0x30 0x3 0x2 0x4C 0x30 0x3 0x2 0x43 0xFF 0xFF 0xFF 0xFF 0xFF 0xFF 0x1
6 # Health command
7 # bytes received[65] 0xC 0x50 0x3 0x8 0x0 0x1 0x2 0x63 0x4F 0x4B 0x3 0x4 0x0 0x0 0x0 0x0 0x0 0x0 0x0 0x0 0x0 0x0 0x0 0x0 0x0
8 #
9 Vendor = GD4430
10 # UPOS
11 ManufacturerName = Datalogic Scanning INC
12 DeviceCategory = Scanner
13 ScaleMode = English
14 # info
15 ApplicationROM = 610001005
16 ApplicationRevisionLevel = 0068
17 ConfigurationFileID = GD44005MO
18 BootloaderROMID = 610001101
19 SerialNumber = GD0010698
20 TopModelNumber = GD4430-BKK10-C196
21 MainBoardNumber =
22 Interface = USB-OEM
23 # health
24 CameraHealth = OK
25 # statistics
26 PowerOnHours = 80
27 ScanCount = 0
28 LastScaleCalibrationTime =
29 # Creation date: Mon Aug 06 09:59:00 2012
30 # Copyright 2012 Datalogic Scanning INC
31 # End of data
32

```

Normal text file length : 1634 lines : 32 Ln : 24 Col : 18 Sel : 0 UNIX ANSI INS

Developers Guide

OPOS service objects export a uniform interface; however there may be slight differences between the same types of devices from different vendors and models. Queries of OPOS properties reveal these differences. Below listed properties, methods, and events are DATALOGIC device specific return values. Other DATALOGIC service objects with different interfaces may produce slightly different results. Developers are advised to consider all error conditions in designing an application.

Scanner Properties

Common Properties

AutoDisable:

Returns **TRUE** or **FALSE** depending on the previous **SetProperty** call.

BinaryConversion:

Returns **TRUE** or **FALSE** depending on the previous **SetProperty** call.

CapCompareFirmwareVersion:

Returns **TRUE** (also depends on the firmware and model of the scanner).

CapPowerReporting:

Returns **OPOS_PR_STANDARD**

CapStatisticsReporting:

Returns **TRUE** (also depends on the firmware and the model of the scanner).

CapUpdateFirmware:

Returns **TRUE** (also depends on the firmware and model of the scanner).

CapUpdateStatistics:

Returns **FALSE**.

CheckHealthText:

Internal HCheck: will return health string

External HCheck: not supported

Interactive HCheck: not supported

This property is empty before the first call to the **CheckHealth** method.

Claimed:

Returns **TRUE** after Claim method has been called. **FALSE** otherwise.

DATALOGIC devices are exclusive. It is recommended that a program keep the device **Claimed** as long as the application is running.

DataCount:

Returns the number of Data Events Queued.

DataEventEnabled:

Returns **TRUE** or **FALSE** depending on the previous **SetProperty** call.

DeviceEnabled:

Returns **TRUE** or **FALSE** depending on the previous **SetProperty** call.

FreezeEvents:

Returns **TRUE** or **FALSE** depending on the previous **SetProperty** call.

OpenResult:

Returns 0.

PowerNotify:

Returns **OPOS_PN_DISABLED** or **OPOS_PN_ENABLED**.

PowerState:

Returns **OPOS_PS_ONLINE**.

If the communication channel is having difficulties, an **OPOS_E_NOHARDWARE** will be returned on calls that send and receive data from the scanner.

If PowerNotify is set to "OPOS_PN_ENABLED", then:

- If the Scanner is Plugged and Enabled:
OPOS_PS_ONLINE
- otherwise:
OPOS_PS_OFF_OFFLINE

ResultCode:

Returns result of last operation.

ResultCodeExtended:

Returns 0

State:

Returns

OPOS_S_CLOSED
OPOS_S_IDLE
OPOS_S_ERROR

DeviceServiceDescription:

Returns a descriptive string depending on the interface and device type.

DeviceServiceVersion:

Returns **101200XX**. where **XX** is the minor version.

PhysicalDeviceDescription:

Returns a descriptive string depending on the interface and device type.

PhysicalDeviceName:

Returns a descriptive string depending on the interface and device type.

Device Specific Properties

DecodeData:

Returns **TRUE** or **FALSE** depending on the previous **SetProperty** call.

ScanData:

Holds the raw scanned data received from the scanner.

ScanData property always has bar code data when a **DataEvent** is fired. For Tabletop scanners, the bar code data may be sent across the USB interface as uncompressed Binary Coded Decimal (BCD), depending upon scanner configuration and bar code type.

ScanDataLabel:

Holds the scanned and decoded data from the scanner if **DecodeData** property is **TRUE**. If the decoded data did not contain a check digit, the scanner service will add the check digit to **ScanDataLabel** for EAN/UPC bar codes.

Contains data if **DecodeData** is **TRUE**.

ScanDataType:

Returns scanned data type of the most recent label from the scanner.

Returned value is one of **SCAN_SDT_XXXX** constants, where **XXXX** is the type of the label. Refer to OPOS Scanner header file for the numerical values.

Contains label type if **DecodeData** is **TRUE**.

Label type as reported on scanner interface — the scanner assigns a label type identifier and sends this with the label data across the interface. The Service Object translates this into one of the OPOS defined label types. For the RS-232 interface, the scanner configuration must be correctly set for the Service Object to properly identify label type.

Scanner Methods

Common Methods

Open:

Returns

```
OPOS_SUCCESS
OPOS_E_NOSERVICE
OPOS_E_NOEXIST
OPOS_E_ILLEGAL
```

Close:

Returns `OPOS_SUCCESS`

ClaimDevice:

Returns

```
OPOS_SUCCESS
OPOS_E_NOSERVICE
OPOS_E_ILLEGAL
OPOS_E_CLAIMED
```

This call will activate the communication with the device. **DATALOGIC** devices are exclusive. It is recommended that a program keep the device **Claimed** as long as the application is running.

CheckHealth:

`OPOS_CH_INTERNAL` is supported.

`OPOS_CH_EXTERNAL` is not supported.

`OPOS_CH_INTERACTIVE` is not supported.

Returns

```
OPOS_SUCCESS
```

`CheckHealthText` property will hold the text result of this method call.

ClearInput:

Returns

```
OPOS_SUCCESS
OPOS_E_DISABLED
OPOS_E_NOTCLAIMED
```

DirectIO:

Returns

```
OPOS_SUCCESS
OPOS_E_NOTCLAIMED
```

DirectIO: (continued)

OPOS_E_OFFLINE
OPOS_E_ILLEGAL



Please refer to DR90000351, Datalogic UPOS DirectIO Commands (available at www.datalogic.com) for a complete list of DirectIO commands and implementation details.

ReleaseDevice:

Returns OPOS_SUCCESS, OPOS_E_ILLEGAL, or OPOS_E_NOTCLAIMED.
This call will deactivate the communication with the device.

ResetStatistics:

Returns OPOS_E_ILLEGAL
DATALOGIC service objects do not support reset statistics.

RetrieveStatistics:

Returns

OPOS_SUCCESS
OPOS_E_NOHARDWARE
OPOS_E_DISABLED
OPOS_E_NOTCLAIMED
OPOS_E_ILLEGAL

Results of the **RetrieveStatistics** call are written to the OPOS Log and returned as per the OPOS spec.

Supported statistics are:

- Device category
- Manufacturer
- Model number
- Serial Number
- Firmware revision
- Interface type
- Power on time
- Number of label scans

UpdateStatistics:

Returns OPOS_E_ILLEGAL
DATALOGIC OPOS Scanner service object does not support update statistics.

Device Specific Methods

None.

Scanner Events

Common Event

DataEvent:

This event fires when a label is forwarded from scanner.

DirectIOEvent:

Not supported.

ErrorEvent:

Not used.

StatusUpdateEvent:

During the Firmware Update Process the following Status Update Events will be delivered:

```
OPOS_SUE_UF_PROGRESS
OPOS_SUE_UF_COMPLETE
OPOS_SUE_UF_COMPLETE_DEV_NOT_RESTORED
OPOS_SUE_UF_FAILED_DEV_OK
OPOS_SUE_UF_FAILED_DEV_UNRECOVERABLE
OPOS_SUE_UF_FAILED_DEV_NEEDS_FIRMWARE
OPOS_SUE_UF_FAILED_DEV_UNKNOWN
```

If PowerNotify is set to OPOS_PN_ENABLED when the scanner is claimed:

- On Enable and/or If the current Power State Changes:

```
OPOS_SUE_POWER_ONLINE
OPOS_SUE_POWER_OFF_OFFLINE
```

Device Specific Events:

None.

Scale Properties

Common Properties

AutoDisable:

Returns **TRUE** or **FALSE** depending on the previous **SetProperty** call.

BinaryConversion:

Returns **TRUE** or **FALSE** depending on the previous **SetProperty** call.

CapCompareFirmwareVersion:

Returns **FALSE**.

CapPowerReporting:

Returns `OPOS_PR_STANDARD`.

CapStatisticsReporting:

Returns `FALSE`.

CapUpdateStatistics:

Returns `FALSE`.

CapUpdateFirmware:

Returns `FALSE`.

CheckHealthText:

Internal HCheck: not supported, will return `OPOS_E_ILLEGAL`.

External HCheck: not supported.

Interactive HCheck: not supported.

Claimed:

Returns `TRUE` after Claim method has been called. `FALSE` otherwise.

`DATALOGIC` devices are exclusive. It is recommended that the device be claimed and continue to be claimed thru-out a session.

DataCount:

Returns `Number of Data Events Queued`.

DataEventEnabled:

Returns `TRUE` or `FALSE` depending on the previous `SetProperty` call.

DeviceEnabled:

Returns `TRUE` or `FALSE` depending on the previous `SetProperty` call.

FreezeEvents:

Returns `TRUE` or `FALSE` depending on the previous `SetProperty` call.

OpenResult:

Returns 0.

PowerNotify:

Returns `OPOS_PN_DISABLED` or `OPOS_PN_ENABLED`.

PowerState:

Returns `OPOS_PS_ONLINE`.

If the communication channel is having difficulties, an `OPOS_E_NOHARDWARE` will be returned on calls that send and receive data from the scale.

If PowerNotify is set to "OPOS_PN_ENABLED", then:

- If the Scanner is Plugged and Enabled:
OPOS_PS_ONLINE
- otherwise:
OPOS_PS_OFF_OFFLINE

ResultCode:

Returns result of last operation.

ResultCodeExtended:

Returns extended result if the last operation produced an OPOS_E_EXTENDED. Otherwise this value is considered invalid.

State:

Returns

```
OPOS_S_CLOSED
OPOS_S_IDLE
OPOS_S_ERROR
```

DeviceServiceDescription:

Returns a descriptive string depending on the interface and device type.

DeviceServiceVersion:

Returns 10YY0XXX where YY is the major version and XXX is the minor version.

PhysicalDeviceDescription:

Returns a descriptive string depending on the interface and device type.

PhysicalDeviceName:

Returns a descriptive string depending on the interface and device type.

Device Specific Properties

CapDisplay:

Returns **TRUE**.

TRUE is returned regardless of a remote display being connected to the scanner/scale or not.

CapDisplayText:

Returns **FALSE**.

FALSE is returned regardless of a remote display being connected to the scanner/scale or not.

CapPriceCalculating:

Returns **FALSE**.

CapStatusUpdate:

Returns **TRUE**.

CapTareWeight:

Returns **FALSE**.

CapZeroScale:

Returns **TRUE**.

AsyncMode:

Returns **TRUE** or **FALSE** depending on the previous **SetProperty** call.

MaxDisplayTextChars:

Returns 0.

MaximumWeight:

Returns 15000 in metric mode.

Returns 30000 in pound mode.

ScaleLiveWeight:

Updated if **LiveWeight** is enabled.

StatusNotify:

If **CapStatusUpdate** is **TRUE**, the application can set **StatusNotify** to either **SCAL_SN_DISABLED** or **SCAL_SN_ENABLED**.

SalesPrice:

Returns 0 currency.

TareWeight:

Returns 0.

UnitPrice:

Returns 0 currency.

WeightUnit:

Returns **SCAL_WU_KILOGRAM** in metric mode.

Returns **SCAL_WU_POUND** in pound mode.

Scale Methods

Common Methods

Open:

Returns

```
OPOS_SUCCESS
OPOS_E_NOSERVICE
OPOS_E_ILLEGAL
```

Close:

Returns **OPOS_SUCCESS**.

ClaimDevice:

Returns

```
OPOS_SUCCESS
OPOS_E_NOSERVICE
OPOS_E_ILLEGAL
OPOS_E_CLAIMED
```

This call will activate the communication with the device. **DATALOGIC** devices are exclusive. It is recommended that a program keep the device **Claimed** as long as the application is running.

CheckHealth:

OPOS_CH_INTERNAL is not supported.

OPOS_CH_EXTERNAL is not supported.

OPOS_CH_INTERACTIVE is not supported.

Returns

```
OPOS_SUCCESS
OPOS_E_NOTCLAIMED
OPOS_E_DISABLED
OPOS_E_ILLEGAL
```

CheckHealthText property will hold the text result of this method call.

ClearInput:

Returns

```
OPOS_SUCCESS
OPOS_E_DISABLED
OPOS_E_NOTCLAIMED
```

DirectIO:

Returns

OPOS_E_NOTCLAIMED
OPOS_E_OFFLINE
OPOS_E_ILLEGAL



Please refer to DR90000351, Datalogic UPOS DirectIO Commands (available at www.datalogic.com) for a complete list of DirectIO commands and implementation details.

ReleaseDevice:

Returns OPOS_SUCCESS.

OPOS_E_ILLEGAL if the device has not been claimed.

This call will deactivate the communication with the device. It is recommended that a program keep the device Claimed until an application quits.

ResetStatistics:

Returns OPOS_E_ILLEGAL

DATALOGIC OPOS Scale service objects do not support reset statistics.

UpdateStatistics:

Returns OPOS_E_ILLEGAL.

DATALOGIC OPOS Scale service objects do not support update statistics.

Device Specific Methods

GetSalesPrice:

Returns 0
Not implemented

GetUnitPrice:

Returns 0
Not implemented

SetUnitPrice:

Returns **OPOS_E_ILLEGAL**
Not implemented

DisplayText:

Returns **OPOS_E_ILLEGAL**

ReadWeight:

Returns

```
OPOS_SUCCESS
OPOS_E_EXTENDED
OPOS_E_TIMEOUT
CANCELLED
OPOS_E_NOTCLAIMED
OPOS_E_DISABLED
OPOS_E_OFFLINE
OPOS_E_ILLEGAL
OPOS_E_FAILURE
OPOS_E_BUSY
OPOS_E_NOHARDWARE
```

If the result is **OPOS_SUCCESS** valid weight is returned.

If the result is **OPOS_E_EXTENDED** extended status will return either **OPOS_ESCAL_OVERWEIGHT** or **OPOS_ESCAL_UNDER_ZERO** in result code extended.

If the result is **OPOS_E_TIMEOUT** there was not valid settled weight on the platter before the timeout. **Weight** and the **ExtendedStatus** values are invalid.



The Weight Unit entry in the Registry must match the Scale configuration (Metric or English). See the Registry Description section starting on [page 21](#).

ZeroScale:

Returns

```
OPOS_SUCCESS
OPOS_E_NOHARDWARE
OPOS_E_OFFLINE
OPOS_E_DISABLED
OPOS_E_NOTCLAIMED
```

Scale Events

Common Event

DataEvent:

Used for asynchronous weight requests

DirectIOEvent:

Not supported

ErrorEvent:

Used if a cancel weight is called during an asynchronous weight request

StatusUpdateEvent:

Supported as per **LiveWeightDisplay** as documented in the UPOS specification.

If PowerNotify is set to OPOS_PN_ENABLED when the scanner is claimed:

- On Enable and/or If the current Power State Changes:
OPOS_SUE_POWER_ONLINE
OPOS_SUE_POWER_OFF_OFFLINE

Device Specific Events

None

NOTES

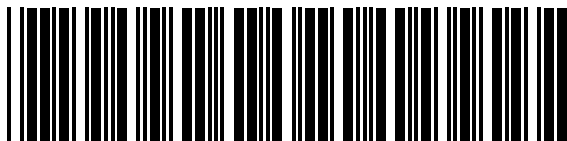


www.datalogic.com

©2008-2014 Datalogic ADC, Inc. All rights reserved.
Datalogic and the Datalogic logo are registered trademarks of
Datalogic S.p.A. in many countries, including the U.S.A. and the E.U.

Datalogic ADC, Inc.

959 Terry Street | Eugene | OR 97402 | USA
Telephone: (1) 541-683-5700 | Fax: (1) 541-345-7140



820025614

(Rev J)

April 2014