

# Instructions Hands Free Stand/Holder

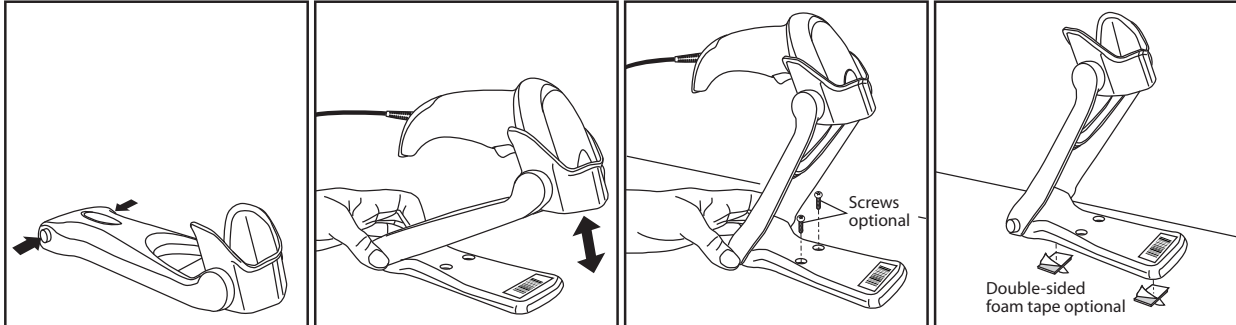
QuickScan™ Lite QW2100



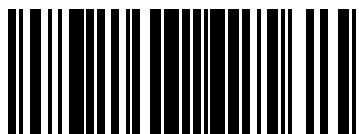
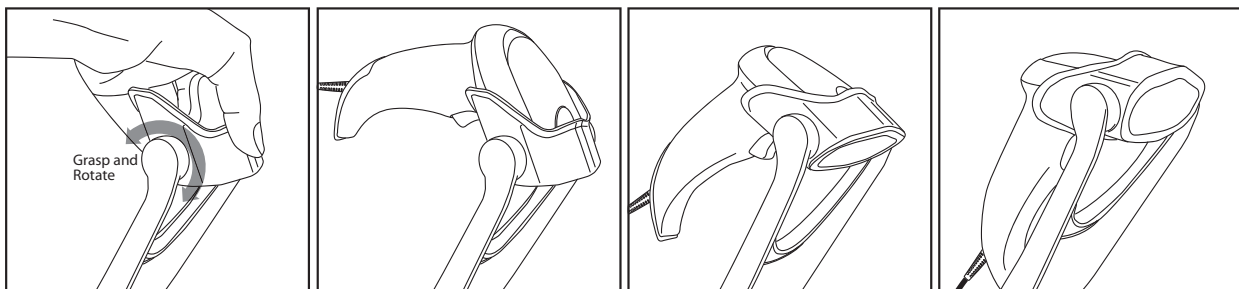
Optional Wall  
Mounted Holder



## Installing the Stand/Holder



## Adjusting the Stand



<p><b>Stand Mode</b></p> <p>No trigger pull is required to read a bar code. Scanning is turned on automatically when an item is placed in the reader's field of view. If the trigger is pulled, the reader acts as if it in single read mode. Double Read Timeout prevents undesired multiple reads of the same label while in this mode.</p>	 <p>Scan Mode = Stand Mode</p>
 <p>Scan Mode = Trigger Object Sense</p>	<p><b>Trigger Object Sense</b></p> <p>This mode is similar to Stand Mode, except that a trigger pull is required to activate the decoder.</p>
<p><b>Trigger Single</b></p> <p>This mode is associated with typical handheld reader operation: when the trigger is pulled, scanning starts and the product scans until the trigger is released, or a label is read, or the maximum Scanning Active Time has elapsed.</p>	 <p>Scan Mode = Trigger Single</p>
 <p>Scan Mode = Trigger Hold Multiple</p>	<p><b>Trigger Hold Multiple</b></p> <p>When the trigger is pulled, scanning starts and the product scans until the trigger is released or Scanning Active Time has elapsed. Reading a label does not disable scanning. Double Read Timeout prevents undesired multiple reads of the same label while in this mode.</p>
<p><b>Trigger Pulse Multiple</b></p> <p>When the trigger is pulled, continuous scanning is activated until Scanning Active Time has elapsed or the trigger has been released and pulled again. Double Read Timeout prevents undesired multiple reads of the same label while in this mode.</p>	 <p>Scan Mode = Trigger Pulse Multiple</p>
 <p>Scan Mode = Flashing</p>	<p><b>Flashing</b></p> <p>The reader flashes on and off regardless of the trigger status. Flash rate is controlled by Flash On Time and Flash Off Time. When Flash is ON the reader reads continuously. When Flash is OFF scanning is deactivated.</p>
<p><b>Always On</b></p> <p>No trigger pull is required to read a bar code. Scanning is continually on. Double Read Timeout prevents undesired multiple reads while in this mode.</p>	 <p>Scan Mode = Always On</p>