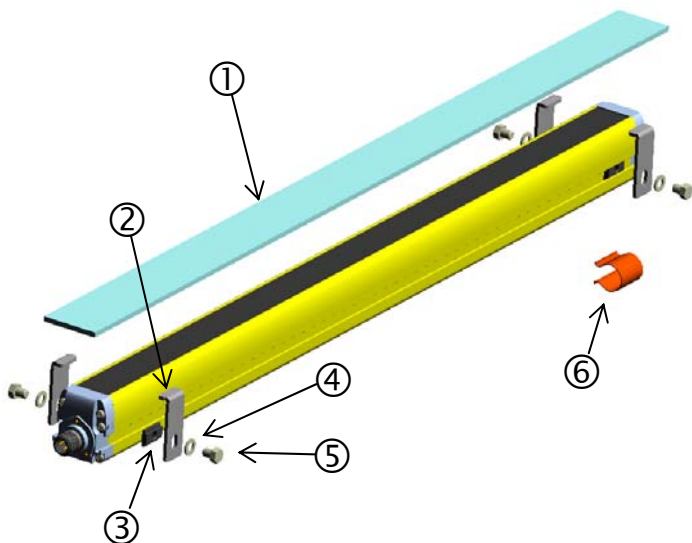


SG-LS SERIES INSTRUCTION MANUAL

MOUNTING INSTRUCTIONS



- ① Transparent PMMA plate (5 pieces)
- ② Fixing bracket *
- ③ M5 nut*
- ④ UNI 6592 Di = 5.3 washer *
- ⑤ TE M5x6 UNI 5739 screws*
- ⑥ Elastic blocking spring *

* ② ③ ④ ⑤ parts:

• 4 pieces for:

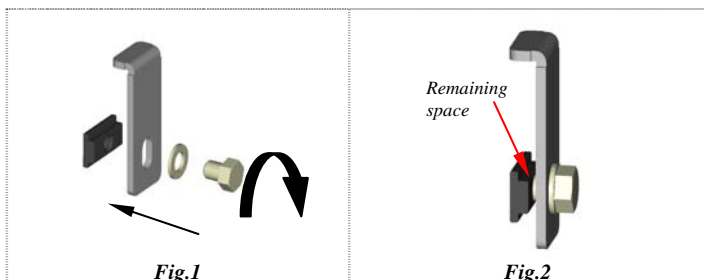
SG-LS from 150 to 1050
SG-LS-2 050
SG-LS-3 080
SG-LS-4 090;

• 6 pieces for:

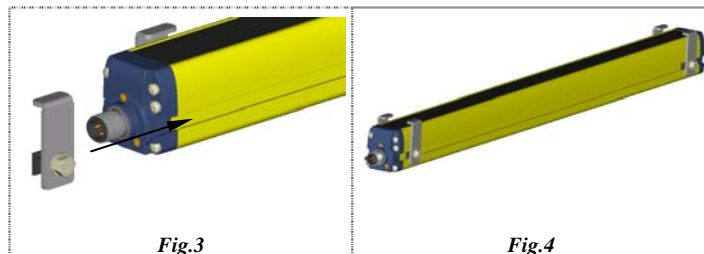
SG-LS from 1200 to 1800
SG-LS-4 120

FIXING INSTRUCTIONS

Build the subassembly, shown in Fig.1 and 2, screwing ⑤ screw to the ③ nut but not completely in order to leave space for ② and ③ parts (refer to Fig.2).

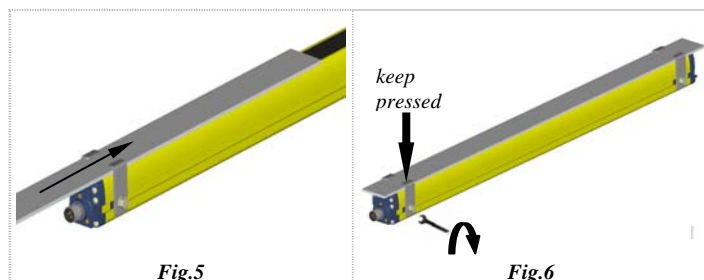


Slide the subassemblies in the product groove (SG series or SE series) as shown in Fig.3, to obtain, for example, the Fig.4 condition. Please refer to the specific datasheet for the recommended fixing positions.



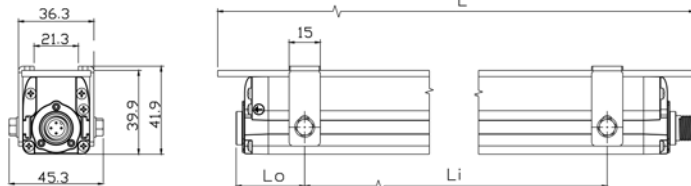
Insert the transparent plate and slide it along the binary under the fixing brackets. Once positioned correctly, tighten the screws with the N° 8 key, pressing the fixing bracket on the plate, until all the fixing brackets are blocked safely.

In case of replacement, untighten the ⑤ screws without removing them, unslide the plate and then replace it. An accessory kit of 4 elastic fasteners (⑥) is available to avoid nut (③) sliding inside the groove in vertical mounting.



NOTE: ESPE maximum operating distance is reduced of 10% for each couple of "LENS" SHIELD" used (one for TX unit and one RX unit).

DIMENSIONS



| Dimension in millimeters | | | | | | | | | |
|--------------------------------------|-------|------|-----|-----|--------------------|------|-----|-----|----------------|
| SG2, SG4B, SE Hand/Finger protection | | | | | SE Body protection | | | | |
| | VERS. | L | Li | Lo | VERS. | L | Li | Lo | |
| n°2+2 brackets | 015 | 245 | 160 | 30 | 2r 050 | 642 | 490 | 75 | n°2+2 brackets |
| | 030 | 392 | 345 | 45 | 3r 080 | 942 | 640 | 175 | |
| | 045 | 540 | 400 | 60 | 4r 090 | 1042 | 660 | 200 | |
| | 060 | 686 | 520 | 75 | | | | | |
| | 075 | 832 | 590 | 115 | | | | | |
| | 090 | 980 | 640 | 175 | 4r 120 | 1342 | 480 | 200 | |
| n°3+3 brackets | 105 | 1126 | 740 | 200 | | | | | n°3+3 brackets |
| | 120 | 1274 | 445 | 200 | | | | | |
| | 135 | 1422 | 520 | 200 | | | | | |
| | 150 | 1568 | 595 | 200 | | | | | |
| | 165 | 1715 | 670 | 200 | | | | | |
| | 180 | 1860 | 745 | 200 | | | | | |

WARRANTY

DATALOGIC AUTOMATION warrants its products to be free from defects.

DATALOGIC AUTOMATION will repair or replace, free of charge, any product found to be defective during the warranty period of 36 months from the manufacturing date.

This warranty does not cover damage or liability deriving from the improper application of DATALOGIC AUTOMATION products.

DATALOGIC AUTOMATION

Via Lavino 265 - 40050 Monte S.Pietro - Bologna - Italy

Tel: +39 051 6765611 - Fax: +39 051 6759324

www.automation.datalogic.com e-mail:info.automation@datalogic.com



DATALOGIC AUTOMATION cares for the environment: 100% recycled paper. DATALOGIC AUTOMATION reserves the right to make modifications and improvements without prior notification.

Datalogic and the Datalogic logo are registered trademarks of Datalogic S.p.A. in many countries, including the U.S.A. and the E.U.