

FLEXPECT-PV



FlexXpect is a modular Vision platform. In combination with the powerful Xpectia hardware, it takes you into a new dimension of specialisation.

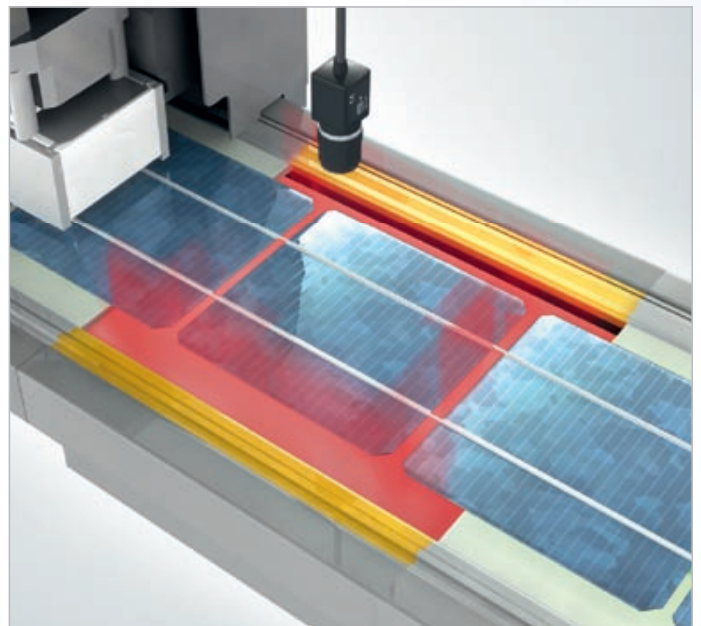
FlexXpect-PV delivers tailored functionality for alignment and the inspection of wafers for chips and cracks.

Features of FlexXpect-PV:

- Easy and intuitive set-up
- Automatic extraction and teaching of the PV wafer
- Precise inspections with high resolution cameras
- Automatic robot calibration
- Fade-out strings and conveyor belts

Supported PV inspections:

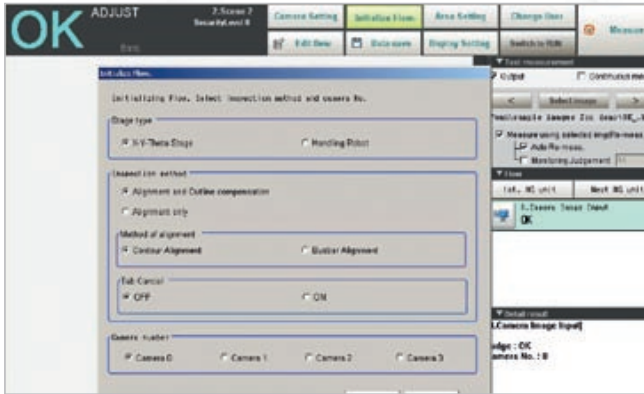
- Precise wafer and string alignment
- Accurate chamfer chip inspection
- Detection of minute edge cracks
- Bus bar alignment on the wafer



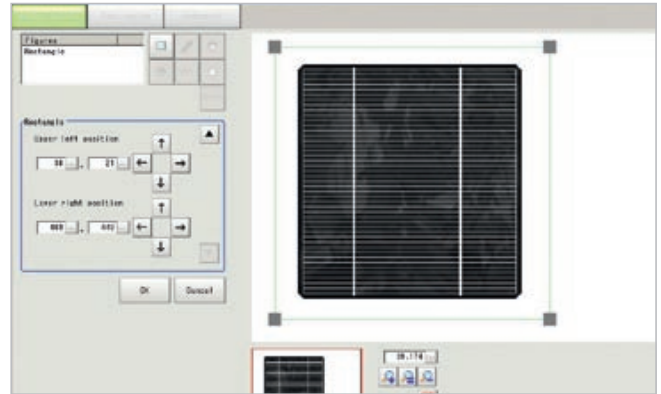
FLEXPECT-PV

Quick set-up in simple steps:

Step 1: Select the inspection function



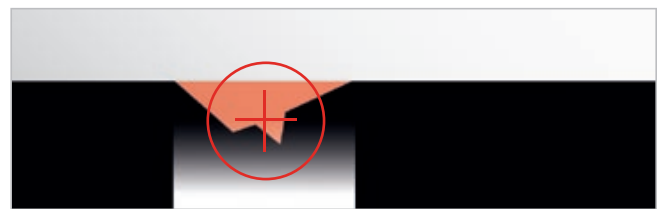
Step 2: Draw a rectangle around the wafer



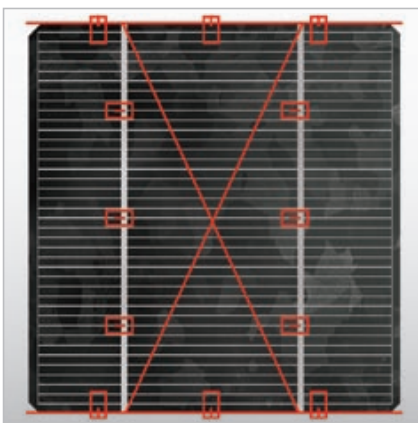
Step 3: One step deletion of bus bars and conveyor belts (optional)



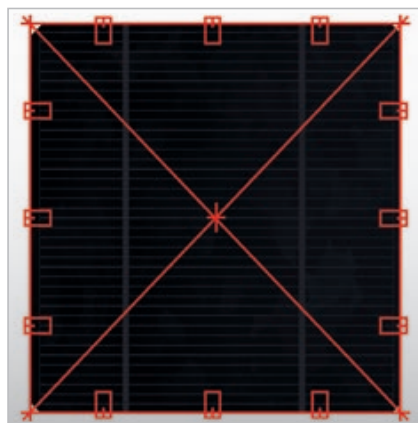
Step 4: Start the inspection



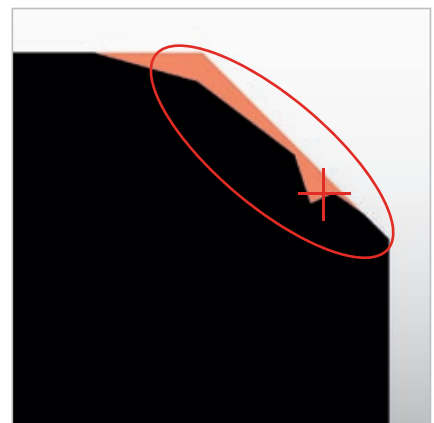
Accurate chamfer chip inspection (0.1 mm)



Bus bar alignment



Outline edge alignment



Precise detection of edge breakage

Item description	Order code
FlexXpect-PV software module	FLEXPECT-PV

Note: FlexXpect software modules require Xpectia/FZW hardware. This is not part of the item and needs to be ordered independently.