



DATALOGIC™

DATALOGIC AUTOMATION

Lightner

QUICK INSTALLATION
GUIDE

QUICK INSTALLATION GUIDE

REVISION INDEX

Revision	Edition	Number of added or edited pages
6.0	2012-12-04	Emission

© 2008 – 2012 Datalogic Automation S.r.l. - ALL RIGHTS RESERVED - Protected to the fullest extent under U.S. and international laws. • Copying, or altering of this document is prohibited without express written consent from Datalogic Automation S.r.l.

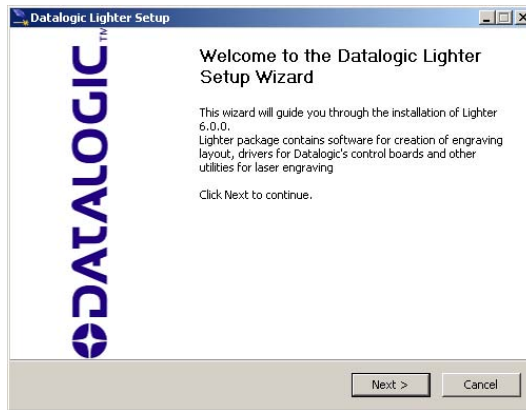
Datalogic and the Datalogic logo are registered trademarks of Datalogic S.p.A. in many countries, including the U.S.A. and the E.U.

All other brand and product names mentioned herein are for identification purposes only and may be trademarks or registered trademarks of their respective owners.

Published 04 December 2012
Printed in Donnas (AO), Italy.

INSTALLATION

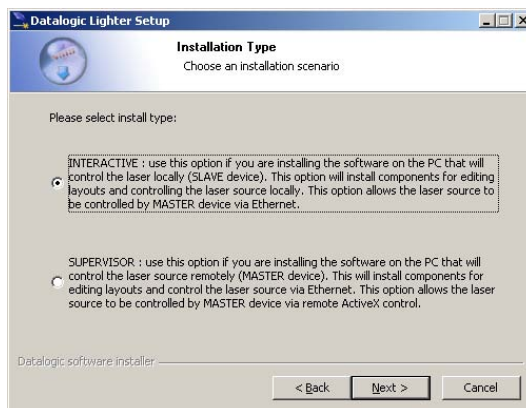
1. Insert USB pen drive on the PC and Launch executable installer. Choose NEXT to continue:



2. Choose I AGREE to accept licence agreement and to continue with installation:



3. Select installation type and proceed with NEXT:



INSTALLATION

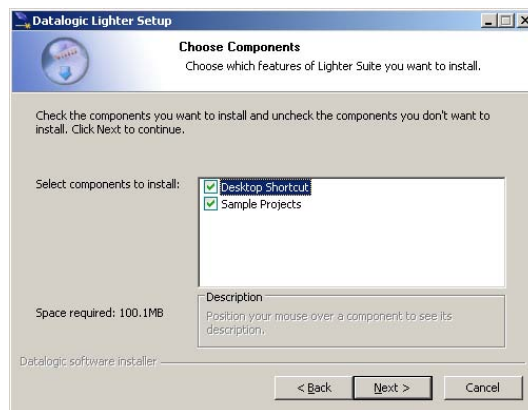
INTERACTIVE

- Installs both Laser Editor and Laser Engine.
- Use this option if you are installing the software on the PC that will control the laser locally (SLAVE device).
- This option will install components for editing layouts and controlling the laser source locally.
- This option allows the laser source to be controlled by MASTER device via Ethernet.

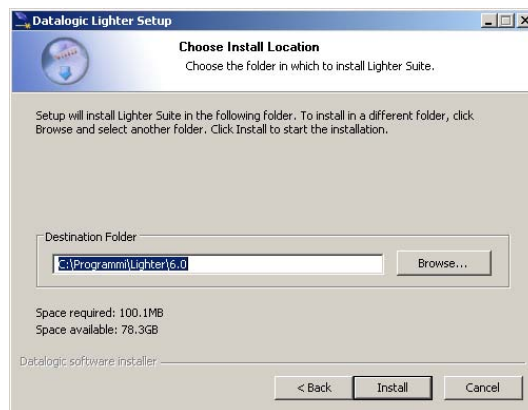
SUPERVISOR

- Use this option if you are installing the software on the PC that will control the laser source remotely (MASTER device).
- This will install components for editing layouts and control the laser source via Ethernet.
- This option allows the laser source to be controlled by MASTER device via remote ActiveX control.

4. Choose components to install and press NEXT to continue:

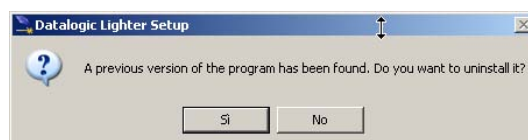


5. Choose installation destination folder and select INSTALL:

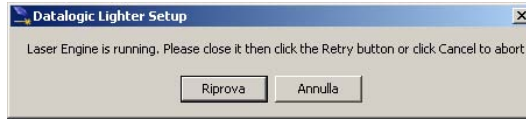


WARNING:

If a previous version is detected, please uninstall it.



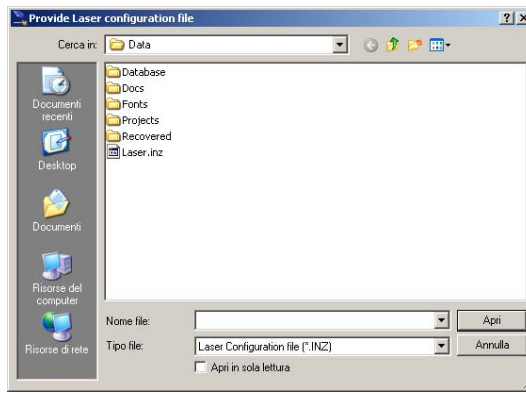
If Laser Engine is running the following warning message will be displayed:



WARNING:

Close Laser Engine and click on "Retry" button to continue!

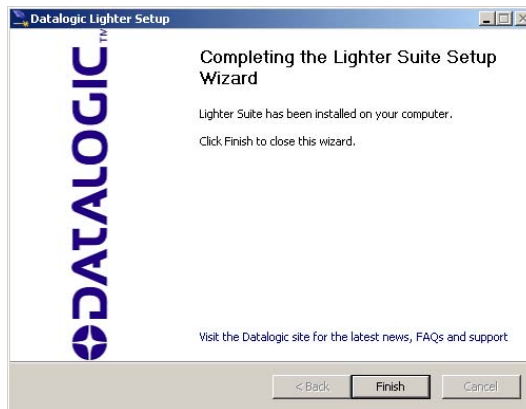
6. A properly configured LASER . INZ file, containing the settings for your laser source, must have been provided by Datalogic Automation in the installation USB pen drive. Select the file and continue with installation selecting Open; if you don't have any such file, prompt Datalogic Automation.



WARNING:

If there was an earlier version, the file laser . inz is not required!

7. To complete installation select Finish:



NOTE:

It is important **turn ON the rack Vlase** before turning on the PC.



DATALOGIC AUTOMATION

Headquarters

Via Lavino, 265
40050 Monte San Pietro
Bologna - Italy
Tel. +39 051 6765611
Fax +39 051 6759324
Purchasing Dept. Fax +39 051 6765499
info.automation.it@datalogic.com

Laser Marking operation offices**Donnas**

Reg. Gurey, via Le Gorrey, 10
11020 Donnas (AO) - ITALY
Tel. +39 0125 8128201
Fax +39 0125 8128401

Sesto Calende

Via dell'Industria, 20
21018 Sesto Calende (VA) - ITALY
Tel. +39 0331 9180601
Fax +39 0331 9180801