

IEC Low Voltage General Purpose Protection

Ferrule fuse-links

22x58 aM 500 to 690VAC from 1 to 125A

Data Sheet

Ferraz Shawmut aM and gG fuse-links cover a wide range of physical sizes and ampere ratings for 400, 500, and 690VAC for protection in electrical distribution circuits and various industrial applications. Most ratings are available in size 8x31 and size 10x38 with an optional indicator, and in size 14x51 and 22x58 with an optional striker to activate an auxiliary contact. All cylindrical fuse-links have ceramic bodies and silver-plated ferrules. Our technology and process was designed to ensure highly reliable technical performance.



Benefits

- Small size
- Safest and most reliable protection system
- High limiting and breaking capacity
- Striker version available for remote blown fuse indication
- Low power dissipation

Applications

aM type for protection of motors, transformers and other loads with in-rush currents.

22x58 aM fuse-links without striker

Size	Class	Nominal Current (A)	Rated Voltage (V)	Catalog Number w/o striker	Reference Number
22x58	aM	1	690	FR22AM69V1	M219776
22x58	aM	2	690	FR22AM69V2	T222220
22x58	aM	4	690	FR22AM69V4	Q222976
22x58	aM	6	690	FR22AM69V6	Y200765
22x58	aM	8	690	FR22AM69V8	N201308
22x58	aM	10	690	FR22AM69V10	X201822
22x58	aM	12	690	FR22AM69V12	T211042
22x58	aM	16	690	FR22AM69V16	M211565
22x58	aM	20	690	FR22AM69V20	S212076
22x58	aM	25	690	FR22AM69V25	J212597
22x58	aM	32	690	FR22AM69V32	V213113
22x58	aM	40	690	FR22AM69V40	N213613
22x58	aM	50	690	FR22AM69V50	R214122
22x58	aM	63	690	FR22AM69V63	C215650
22x58	aM	80	690	FR22AM69V80	H216667
22x58	aM	100	500	FR22AM50V100	Y217693
22x58	aM	125	500	FR22AM50V125	J218209

22x58 aM fuse-links with striker

Size	Class	Nominal Current (A)	Rated Voltage (V)	Catalog Number with striker	Reference Number with striker	Rated Voltage (V)	Catalog Number with striker	Reference Number with striker
22x58	aM	1	690	FR22AM69V1P	E215652	-	-	-
22x58	aM	2	690	FR22AM69V2P	J216162	-	-	-
22x58	aM	4	690	FR22AM69V4P	A217695	-	-	-
22x58	aM	6	690	FR22AM69V6P	Y218728	-	-	-
22x58	aM	8	690	FR22AM69V8P	Q219779	-	-	-
22x58	aM	10	690	FR22AM69V10P	S222978	-	-	-
22x58	aM	12	690	FR22AM69V12P	R201311	-	-	-
22x58	aM	16	690	FR22AM69V16P	W211044	-	-	-
22x58	aM	20	690	FR22AM69V20P	W212079	-	-	-
22x58	aM	25	690	FR22AM69V25P	Q213615	-	-	-
22x58	aM	32	690	FR22AM69V32P	X214633	-	-	-
22x58	aM	40	690	FR22AM69V40P	F215653	-	-	-
22x58	aM	50	690	FR22AM69V50P	K216669	-	-	-
22x58	aM	63	690	FR22AM69V63P	A1022166	500	FR22AM50V63P	B217696
22x58	aM	80	690	FR22AM69V80P	C1022168	500	FR22AM50V80P	Z218729
22x58	aM	100	-	-	-	500	FR22AM50V100P	T222979
22x58	aM	125	-	-	-	500	FR22AM50V125P	S201312

Ratings

690VAC 1 to 80A
500VAC 100 to 125A
120kA breaking capacity

Standards & Approvals

IEC 60269-1 & -2

Approved by Lloyd's Register of Shipping and Bureau Veritas
RoHS Compliant



Related products

Fuse-holders: Modulostar® CMS22

Materials: body: ceramic
Materials: contact: silver plated copper

Product weight: 21g
Packaging: 10 pieces

IEC Low Voltage General Purpose Protection

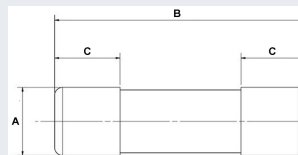
Ferrule fuse-links

22x58 aM 500 to 690VAC from 1 to 125A



Size	Nominal Current (A)	Breaking Capacity @ Rated Voltage (kA)	Watts Loss @ 100% In (W)
22x58	1	120	0.2
22x58	2	120	0.25
22x58	4	120	0.35
22x58	6	120	0.45
22x58	8	120	0.6
22x58	10	120	0.75
22x58	12	120	0.85
22x58	16	120	1.15
22x58	20	120	1.35
22x58	25	120	1.7
22x58	32	120	2.2
22x58	40	120	2.7
22x58	50	120	3.6
22x58	63	120	4.8
22x58	80	120	6.2
22x58	100	120	6.65
22x58	125	120	9.9

Dimensions (mm)



Size	A	B	C
22x58	22.2	58	16.2

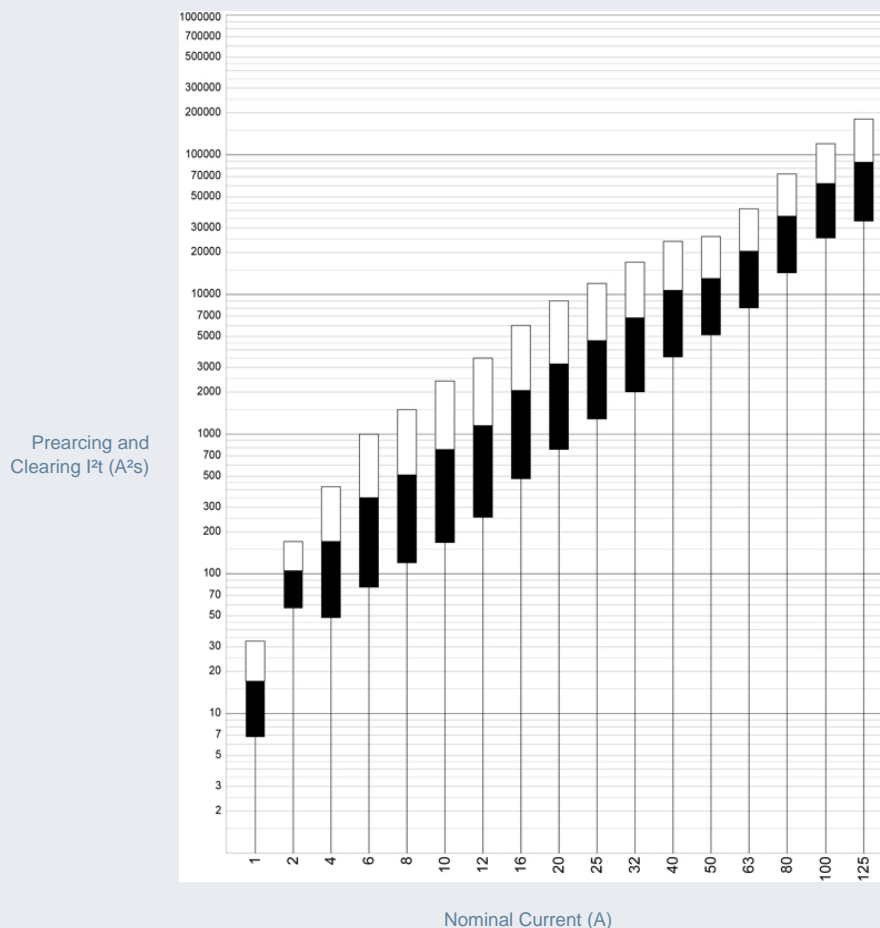
Striker



Before

After

Characteristics I²t



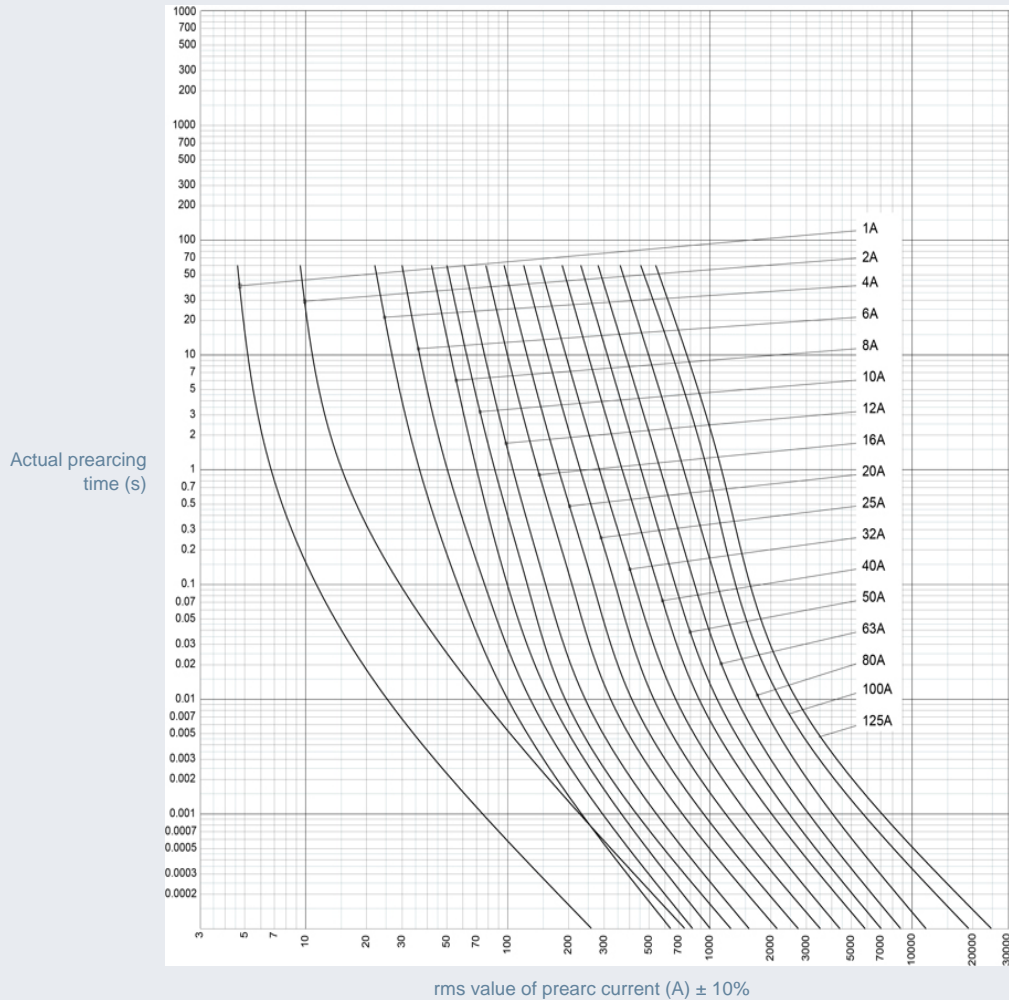
IEC Low Voltage General Purpose Protection

Ferrule fuse-links

22x58 aM 500 to 690VAC from 1 to 125A

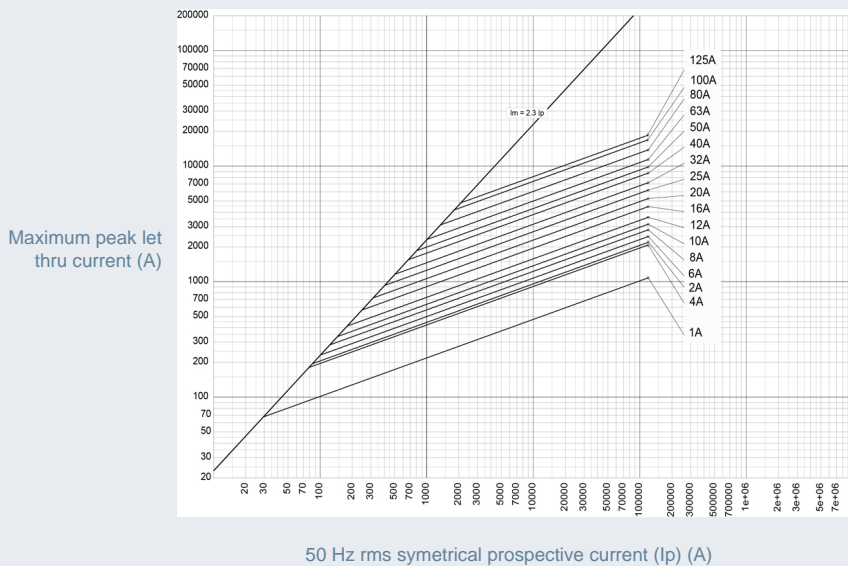


Time current characteristics



rms value of prearc current (A) ± 10%

Peak let thru characteristics



50 Hz rms symmetrical prospective current (Ip) (A)