

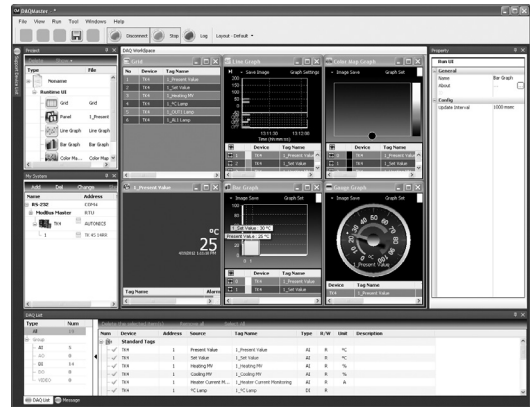
DAQMaster (Comprehensive Device Management Program)

■ DAQMaster Overview

DAQMaster is comprehensive device management program that can be used with Autonics thermometers, panel meters, pulse meters, and counters, etc and with Konics recorders, indicators.

DAQMaster provides GUI control for easy and convenient management of parameters and multiple device data monitoring.

※Visit our website (www.autonics.com) to download the user manual and software.



< DAQMaster screen >

■ Features

● Multiple Device Support

: Simultaneously monitor multiple devices and set parameters. Simultaneously connect units with different addresses in a single device. Multiple RS-233 ports are available for communications using Modbus remote terminal unit.

● Device Scan

: In cases of multiple units (with different addresses) connected together, the unit scan function automatically searches for units.

● Convenient User Interface

: Freely arrange windows for data monitoring, properties, and projects. Saving a project also saves the screen layout.

● Project Management

: You can save added device information, data monitoring screen layouts, and I/O source selection as project files. Opens project files to load the saved settings. Provides a project list for simple and easy project file management.

● Monitoring Data Log

: When monitoring, data log files can be saved as either DAQMaster data files (.ddf) or CSV (.csv) files. Open files saved in .csv format directly from Microsoft Excel. Define log data file naming/saving rules and destination folders to make file management convenient.

● Data Analysis

: Performs grid and graph analyses of .ddf data files using DAQMaster's data analysis feature. Saves grid data as .rtf, .txt, .html, or .csv files in Data Grid.

● Print Modbus Map Table Report

: Print address map reports of registered Modbus devices. Modbus map table reports can be saved as .html and .pdf formats.

● Multilingual Support

: Supports Korean, English, Japanese, Simplified Chinese. To add a different language, modify the files in the Lang folder rename, and save.

● Script Support

: Uses the Lua Script language and deals with different I/O processes for individual devices.

■ Installing The Program

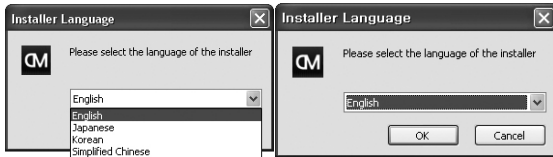
◎ System requirements

< Computer specification for using software >

Item	Minimum requirements
System	IBM PC compatible computer with Intel Pentium III or above
Operations	Microsoft Windows 98/NT/XP/Vista/7/8/10
Memory	256MB+
Hard disk	1GB+ of available hard disk space
VGA	Resolution: 1024×768 or higher
Others	RS-232 serial port (9-pin), USB port

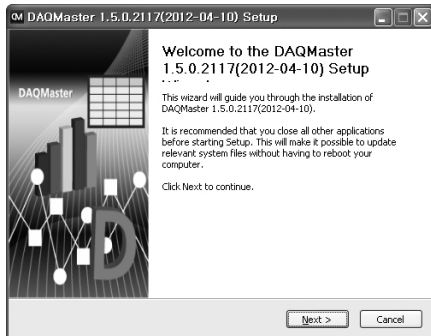
◎ Preparations

Close all programs before you start DAQMaster installation. Double-click DAQMaster setup.exe to start installation. Installer Language window appears. Select the language and click OK button.



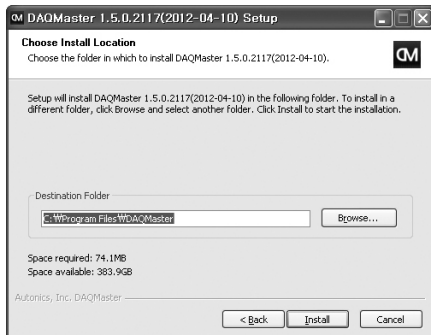
◎ Installation

1) Click Next in the installation welcome window.

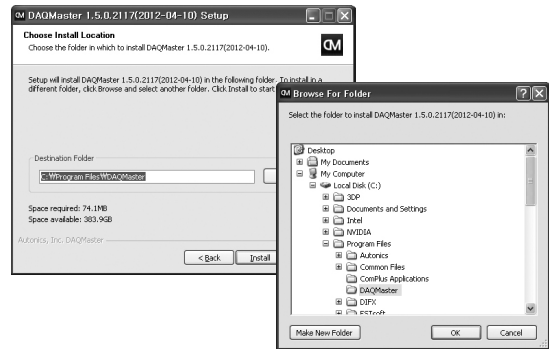


2) Choose Install Location window appears. Default installation path is C:\Program Files\DAQMaster.

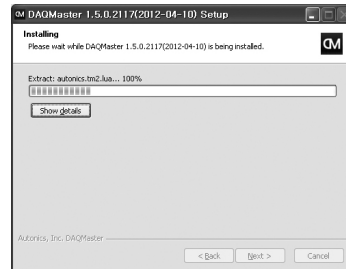
3) Click Install button to choose the default path for installation. Click Browse button to change the installation path.



4) In the Browse Folder window, select the desired destination folder and then click OK to start installation.

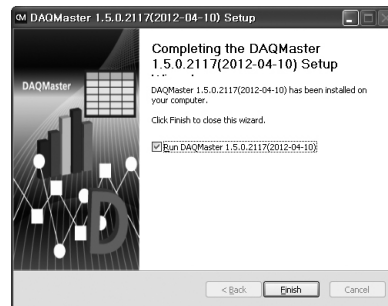


5) Installation progress is displayed in the status window as follows.

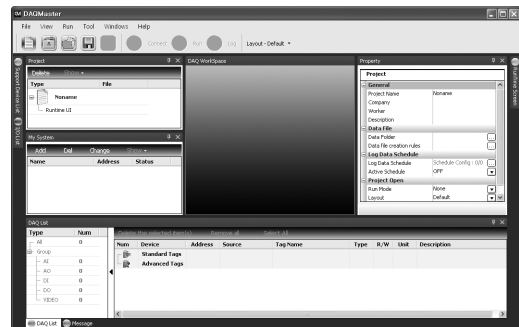


6) Installation Complete window appears after installation is completed.

7) If the check box in the Installation Complete window is checked, DAQMaster runs upon completion of installation. You can now run DAQMaster by double-clicking the DAQMaster icon on the desktop.



When running the program for the first time, the initial screen displays the following.



- (A) Photoelectric Sensors
- (B) Fiber Optic Sensors
- (C) Door/Area Sensors
- (D) Proximity Sensors
- (E) Pressure Sensors
- (F) Rotary Encoders
- (G) Connectors/ Sockets
- (H) Temperature Controllers
- (I) SSRs / Power Controllers
- (J) Counters
- (K) Timers
- (L) Panel Meters
- (M) Tacho / Speed / Pulse Meters
- (N) Display Units
- (O) Sensor Controllers
- (P) Switching Mode Power Supplies
- (Q) Stepper Motors & Drivers & Controllers
- (R) Graphic/ Logic Panels
- (S) Field Network Devices
- (T) Software