

# IEC Low Voltage General Purpose Protection

## Ferrule fuse-links

22x58 gG 500 to 690VAC from 2 to 125A

Data Sheet

Ferraz Shawmut aM and gG fuse-links cover a wide range of physical sizes and ampere ratings for 400, 500, and 690VAC for protection in electrical distribution circuits and various industrial applications. Most ratings are available in size 8x31 and size 10x38 with an optional indicator, and in size 14x51 and 22x58 with an optional striker to activate an auxiliary contact. All cylindrical fuse-links have ceramic bodies and silver-plated ferrules. Our technology and process was designed to ensure highly reliable technical performance.



### Benefits

- Small size
- Full range protection
- Safest and most reliable protection system
- High limiting and breaking capacity
- Striker version available for remote blown fuse indication
- Low power dissipation

### Applications

gG type for protection of line, cable against overload and short circuit in various industrial application and electrical distribution circuits.

### 22x58 gG fuse-links without striker

Size	Class	Nominal Current (A)	Rated Voltage (V)	Catalog Number w/o striker	Reference Number w/o striker
22x58	gG	2	690	FR22GG69V2	F219241
22x58	gG	4	690	FR22GG69V4	H219772
22x58	gG	6	690	FR22GG69V6	P222216
22x58	gG	8	690	FR22GG69V8	L222972
22x58	gG	10	690	FR22GG69V10	T200761
22x58	gG	12	690	FR22GG69V12	J201304
22x58	gG	16	690	FR22GG69V16	S201818
22x58	gG	20	690	FR22GG69V20	P211038
22x58	gG	25	690	FR22GG69V25	N212072
22x58	gG	32	690	FR22GG69V32	F212594
22x58	gG	40	690	FR22GG69V40	J213609
22x58	gG	50	690	FR22GG69V50	P214626
22x58	gG	63	690	FR22GG69V63	Y215646
22x58	gG	80	690	FR22GG69V80	Q217180
22x58	gG	100	500	FR22GG50V100	E218205
22x58	gG	125	500	FR22GG50V125	J219773

### 22x58 gG fuse-links with striker

Size	Class	Nominal Current (A)	Rated Voltage (V)	Catalog Number with striker	Reference Number with striker	Rated Voltage (V)	Catalog Number with striker	Reference Number with striker
22x58	gG	2	690	FR22GG69V2P	N093760	-	-	-
22x58	gG	4	690	FR22GG69V4P	R214628	-	-	-
22x58	gG	6	690	FR22GG69V6P	A215648	-	-	-
22x58	gG	8	690	FR22GG69V8P	F216665	-	-	-
22x58	gG	10	690	FR22GG69V10P	W217691	-	-	-
22x58	gG	12	690	FR22GG69V12P	W218726	-	-	-
22x58	gG	16	690	FR22GG69V16P	L219775	-	-	-
22x58	gG	20	690	FR22GG69V20P	P222975	-	-	-
22x58	gG	25	690	FR22GG69V25P	M201307	-	-	-
22x58	gG	32	690	FR22GG69V32P	S211041	-	-	-
22x58	gG	40	690	FR22GG69V40P	R212075	-	-	-
22x58	gG	50	690	FR22GG69V50P	M213612	-	-	-
22x58	gG	63	690	FR22GG69V63P	T1022160	500	FR22GG50V63P	S214629
22x58	gG	80	690	FR22GG69V80P	Z1022165	500	FR22GG50V80P	F216159
22x58	gG	100	-	-	-	500	FR22GG50V100P	T217183
22x58	gG	125	-	-	-	500	FR22GG50V125P	H218208

### Ratings

690VAC 2 to 80A  
500VAC 63 to 125A  
120kA breaking capacity

### Standards & Approvals

IEC 60269-1 & -2

Approved by Lloyd's Register of Shipping and Bureau Veritas

RoHS Compliant



### Related products

Fuse-holders: Modulostar® CMS22

Materials: body: ceramic

Materials: contact: silver plated copper

Product weight: 54g

Packaging: 10 pieces

# IEC Low Voltage General Purpose Protection

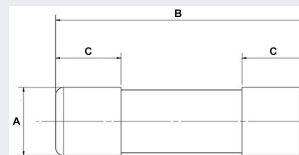
## Ferrule fuse-links

22x58 gG 500 to 690VAC from 2 to 125A



Size	Nominal Current (A)	Breaking Capacity @ Rated Voltage (kA)	Watts Loss @ 100% In (W)
22x58	2	120	0.9
22x58	4	120	1.25
22x58	6	120	1.4
22x58	8	120	1.6
22x58	10	120	1.9
22x58	12	120	2
22x58	16	120	2.5
22x58	20	120	3.4
22x58	25	120	3.5
22x58	32	120	3.7
22x58	40	120	4.3
22x58	50	120	5.3
22x58	63	120	6.3
22x58	80	120	7.4
22x58	100	120	8.3
22x58	125	120	11.3

### Dimensions (mm)



Size	A	B	C
22x58	22.2	58	16.2

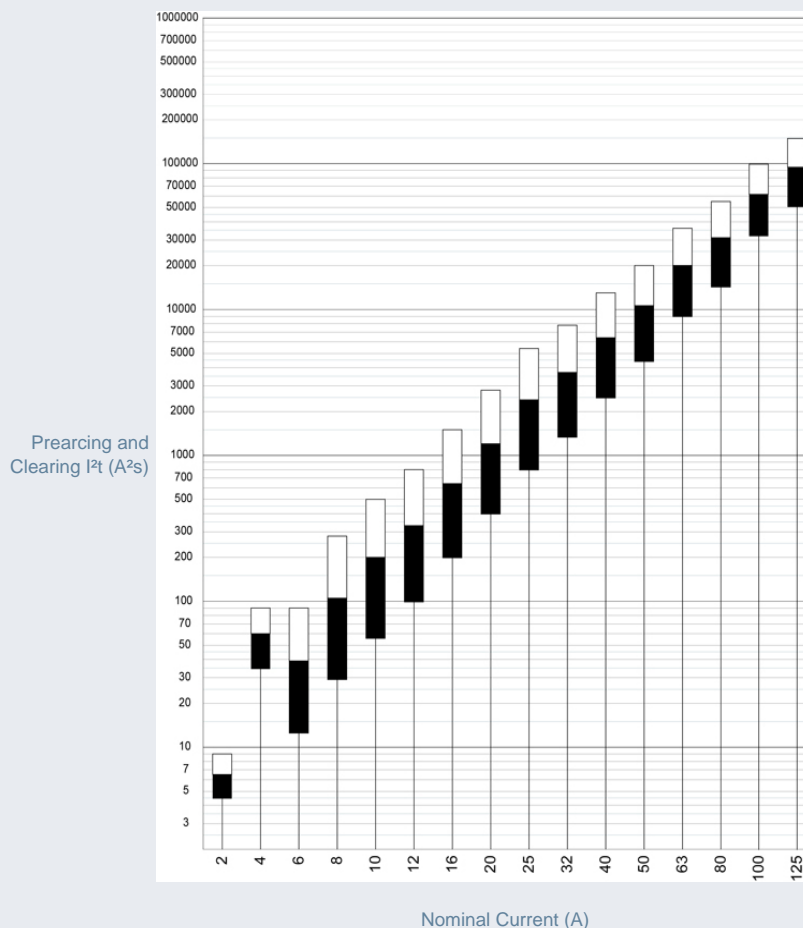
### Striker



Before

After

### Characteristics I<sup>2</sup>t



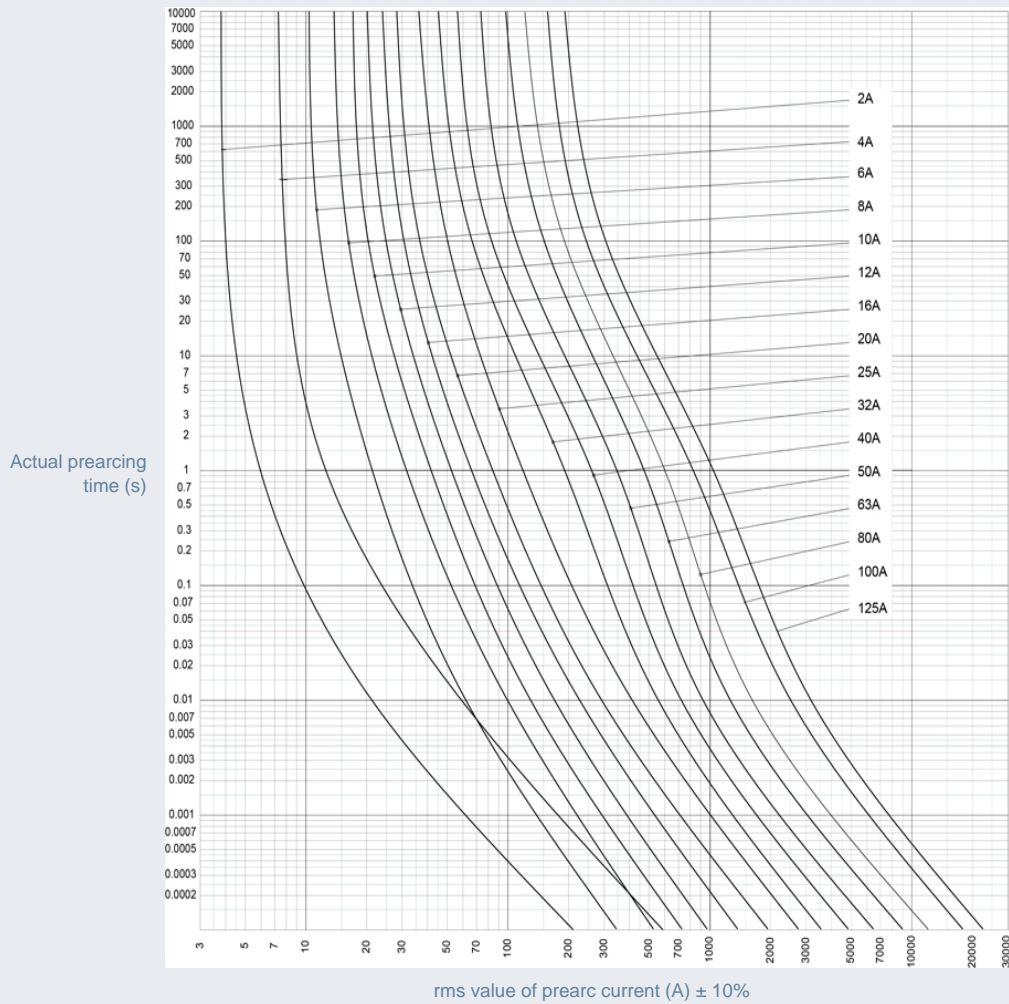
# IEC Low Voltage General Purpose Protection

## Ferrule fuse-links

22x58 gG 500 to 690VAC from 2 to 125A

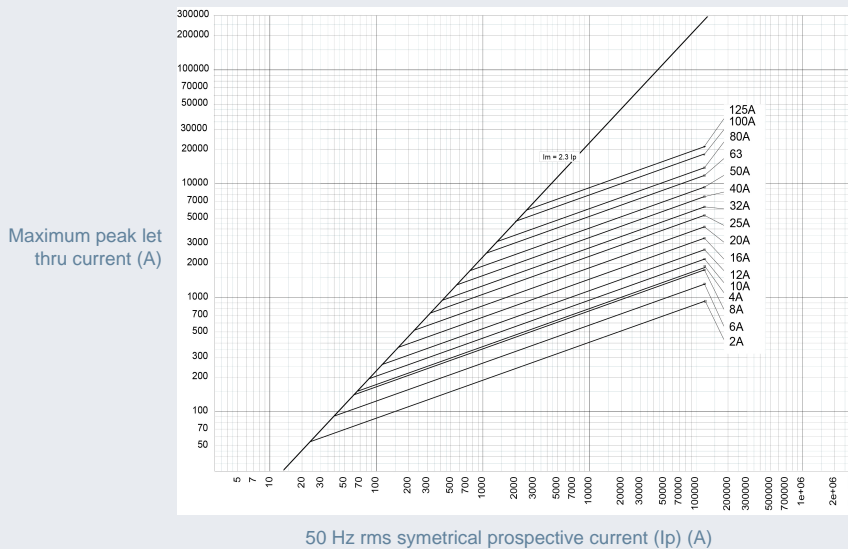


Time current characteristics



rms value of prearc current (A)  $\pm 10\%$

Peak let thru characteristics



Maximum peak let thru current (A)

50 Hz rms symmetrical prospective current ( $I_p$ ) (A)