

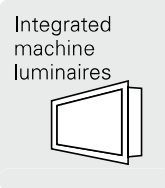
## MACH LED PRO

INCREDIBLY VARIABLE, CAN BE UNOBTRUSIVELY INTEGRATED.

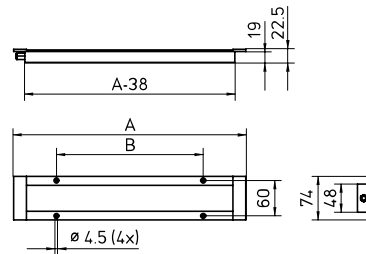


Even though the requirements for a machine design tend to be individual, they have one thing in common: they are not necessarily tailored to the luminaire. It is for precisely this reason that the model series MACH LED PRO embodies absolute variability in terms of area lighting. This is thanks to designs of different lengths with 1, 2, 3 or 4 LEDs and possibilities to control the light with the latest LED technology. That means that this luminaire practically disappears within the machine wall thanks to the unique construction principle that is based on the established MACH LED platform.

- Standard-compliant lighting for every lighting and room situation
- Constantly high lighting quality in the long term
- Direct connection to 24 V without additional components
- Variants with narrow and wide angles of illumination
- Ideal for high mechanical and thermal stress
- High system of protection
- Maintenance-free: LED life of up to 50,000 hours and more
- Unlimited functionality irrespective of frequent switching or fluctuations of mains voltage
- Resistance-tested with many cooling agents and lubricants

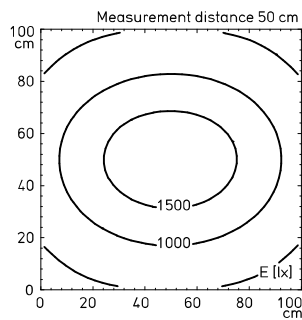


efficientLight

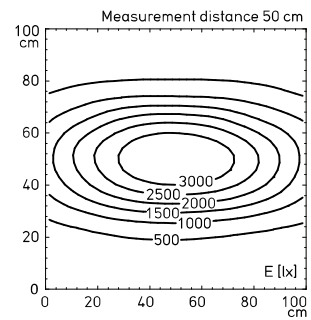


**Features at a glance**

- 1, 2, 3 or 4 x HIGH POWER LED
- Color temperature neutral white 5,000 K
- Direct illumination or 30° angle of illumination (lens)
- Aluminum colored anodized housing, 4 mm thick safety glass
- Integration in recess with screws
- Without switch
- System of protection IP67; class of protection III
- Supplied with 3 m mains lead and free stranded wires
- Driver to connect to the mains voltage as an accessory



Illuminance based on the example of 24 W without lens (95°)



Illuminance based on the example of 24 W with 30° lens

**20 – 28 VDC**

CONSUMPTION	OPERATING DEVICE	DIMENSIONS	SPECIAL FEATURE	$E_m / E_{max}^*$	MODEL	ORDER NO.
6 W	-	A = 220 x 74 mm B = 125 mm (1x)	-	261/560 lx <sup>1</sup>	MUEL 1 S	112 571 002 - 000 852 16
6 W	-	A = 220 x 74 mm B = 125 mm (1x)	30° lens	333/1224 lx <sup>1</sup>	MUEL 1 S	112 571 000 - 000 845 79
12 W	-	A = 395 x 74 mm B = 250 mm (1x)	-	527/1065 lx <sup>1</sup>	MUEL 2 S	112 571 006 - 000 852 24
12 W	-	A = 395 x 74 mm B = 250 mm (1x)	30° lens	612/2186 lx <sup>1</sup>	MUEL 2 S	112 571 004 - 000 852 20
18 W	-	A = 570 x 74 mm B = 200 mm (2x)	-	758/1459 lx <sup>1</sup>	MUEL 3 S	112 571 012 - 000 852 28
18 W	-	A = 570 x 74 mm B = 200 mm (2x)	30° lens	922/3061 lx <sup>1</sup>	MUEL 3 S	112 571 010 - 000 852 27
24 W	-	A = 745 x 74 mm B = 250 mm (2x)	-	1001/1820 lx <sup>1</sup>	MUEL 4 S	112 571 016 - 000 852 76
24 W	-	A = 745 x 74 mm B = 250 mm (2x)	30° lens	1122/3429 lx <sup>1</sup>	MUEL 4 S	112 571 014 - 000 852 75

**20 – 28 VAC**

CONSUMPTION	OPERATING DEVICE	DIMENSIONS	SPECIAL FEATURE	$E_m / E_{max}^*$	MODEL	ORDER NO.
6 W	-	A = 220 x 74 mm B = 125 mm (1x)	-	261/560 lx <sup>1</sup>	MUEL 1 S	112 571 003 - 000 851 94
6 W	-	A = 220 x 74 mm B = 125 mm (1x)	30° lens	333/1224 lx <sup>1</sup>	MUEL 1 S	112 571 001 - 000 851 27
12 W	-	A = 395 x 74 mm B = 250 mm (1x)	-	527/1065 lx <sup>1</sup>	MUEL 2 S	112 571 007 - 000 852 26
12 W	-	A = 395 x 74 mm B = 250 mm (1x)	30° lens	612/2186 lx <sup>1</sup>	MUEL 2 S	112 571 005 - 000 852 25
18 W	-	A = 570 x 74 mm B = 200 mm (2x)	-	758/1459 lx <sup>1</sup>	MUEL 3 S	112 571 013 - 000 852 57
18 W	-	A = 570 x 74 mm B = 200 mm (2x)	30° lens	922/3061 lx <sup>1</sup>	MUEL 3 S	112 571 011 - 000 852 56
24 W	-	A = 745 x 74 mm B = 250 mm (2x)	-	1001/1820 lx <sup>1</sup>	MUEL 4 S	112 571 017 - 000 853 11
24 W	-	A = 745 x 74 mm B = 250 mm (2x)	30° lens	1122/3429 lx <sup>1</sup>	MUEL 4 S	112 571 015 - 000 852 78

\* $E_m$  = medium illuminance;  $E_{max}$  = maximum illuminance; <sup>1</sup> Measuring range 100 cm x 100 cm / Measuring distance 50 cm  
 Also available as a surface-mounted luminaire

## MACH LED PRO

SUPERIOR LIGHTING THANKS TO LED: INCREDIBLY POWERFUL, INCREDIBLY FLAT.

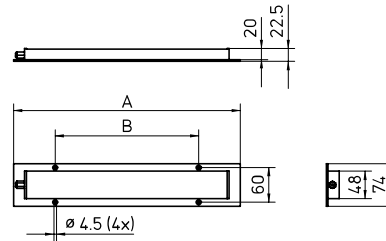


The fact is: In the workrooms of almost all modern machines, there is hardly any space left. This is why Waldmann has developed MACH LED PRO, an extremely flat, variable machine luminaire that conforms to all standards thanks to the use of the latest LED technology. It was inspired by the established MACH LED platform. Once you have selected the right length, it is the perfect solution for many lighting tasks – irrespective of whether you need to light up a whole area or merely require focused lighting.

- Standard-compliant lighting for every lighting and room situation
- Variants with narrow and wide angles of illumination
- Constantly high lighting quality in the long term
- Direct connection to 24 V without additional components
- Ideal for high mechanical and thermal stress
- High system of protection
- Maintenance-free: LED life of up to 50,000 hours and more
- Unlimited functionality irrespective of frequent switching or fluctuations of mains voltage
- Resistance-tested with many cooling agents and lubricants



efficient *light*



Integrated machine luminaires

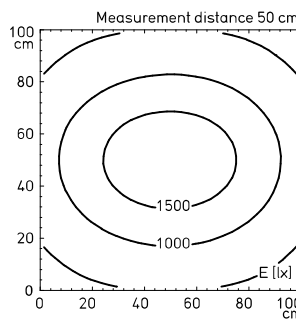


Surface-mounted luminaires

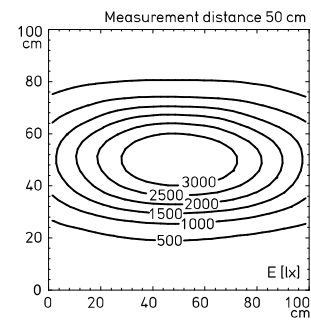


**Features at a glance**

- 1, 2, 3 or 4 x HIGH POWER LED
- Color temperature neutral white 5,000 K
- Direct illumination or 30° angle of illumination (lens)
- Aluminum colored anodized housing, 4 mm thick safety glass
- Screw-mounted
- Without switch
- System of protection IP67; class of protection III
- Supplied with 3 m mains lead and free stranded wires
- Driver to connect to the mains voltage as an accessory



Illuminance based on the example of 24 W without lens (95°)



Illuminance based on the example of 24 W with 30° lens

**20 – 28 VDC**

CONSUMPTION	OPERATING DEVICE	DIMENSIONS	SPECIAL FEATURE	$E_m / E_{max}^*$	MODEL	ORDER NO.
6 W	–	A = 220 x 74 mm B = 125 mm (1x)	–	261/560 lx <sup>1</sup>	MUAL 1 S	112 571 022 - 000 821 86
6 W	–	A = 220 x 74 mm B = 125 mm (1x)	30° lens	333/1224 lx <sup>1</sup>	MUAL 1 S	112 571 020 - 000 790 42
12 W	–	A = 395 x 74 mm B = 250 mm (1x)	–	527/1065 lx <sup>1</sup>	MUAL 2 S	112 571 026 - 000 825 11
12 W	–	A = 395 x 74 mm B = 250 mm (1x)	30° lens	612/2186 lx <sup>1</sup>	MUAL 2 S	112 571 024 - 000 824 56
18 W	–	A = 570 x 74 mm B = 200 mm (2x)	–	758/1459 lx <sup>1</sup>	MUAL 3 S	112 571 032 - 000 828 20
18 W	–	A = 570 x 74 mm B = 200 mm (2x)	30° lens	922/3061 lx <sup>1</sup>	MUAL 3 S	112 571 030 - 000 827 88
24 W	–	A = 745 x 74 mm B = 250 mm (2x)	–	1001/1820 lx <sup>1</sup>	MUAL 4 S	112 571 036 - 000 828 46
24 W	–	A = 745 x 74 mm B = 250 mm (2x)	30° lens	1122/3429 lx <sup>1</sup>	MUAL 4 S	112 571 034 - 000 828 44

**20 – 28 VAC**

CONSUMPTION	OPERATING DEVICE	DIMENSIONS	SPECIAL FEATURE	$E_m / E_{max}^*$	MODEL	ORDER NO.
6 W	–	A = 220 x 74 mm B = 125 mm (1x)	–	261/560 lx <sup>1</sup>	MUAL 1 S	112 571 023 - 000 822 50
6 W	–	A = 220 x 74 mm B = 125 mm (1x)	30° lens	333/1224 lx <sup>1</sup>	MUAL 1 S	112 571 021 - 000 822 49
12 W	–	A = 395 x 74 mm B = 250 mm (1x)	–	527/1065 lx <sup>1</sup>	MUAL 2 S	112 571 027 - 000 826 35
12 W	–	A = 395 x 74 mm B = 250 mm (1x)	30° lens	612/2186 lx <sup>1</sup>	MUAL 2 S	112 571 025 - 000 826 32
18 W	–	A = 570 x 74 mm B = 200 mm (2x)	–	758/1459 lx <sup>1</sup>	MUAL 3 S	112 571 033 - 000 828 42
18 W	–	A = 570 x 74 mm B = 200 mm (2x)	30° lens	922/3061 lx <sup>1</sup>	MUAL 3 S	112 571 031 - 000 828 40
24 W	–	A = 745 x 74 mm B = 250 mm (2x)	–	1001/1820 lx <sup>1</sup>	MUAL 4 S	112 571 037 - 000 828 66
24 W	–	A = 745 x 74 mm B = 250 mm (2x)	30° lens	1122/3429 lx <sup>1</sup>	MUAL 4 S	112 571 035 - 000 828 63

\* $E_m$  = medium illuminance;  $E_{max}$  = maximum illuminance; <sup>1</sup> Measuring range 100 cm x 100 cm / Measuring distance 50 cm  
 Also available as an integrated machine luminaire