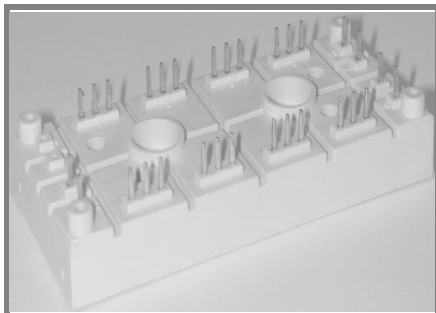


SKD 116/.. -L75



SEMIPONT™ 6

3-Phase Bridge Rectifier + IGBT braking chopper

SKD 116/.. -L75

Target Data

Features

- Compact design
- Two screws mounting
- Heat transfer and isolation through direct copper bonded aluminium oxide ceramic (DCB)
- High surge currents
- Up to 1600V reverse voltage
- UL recognized, file no. E 63 532

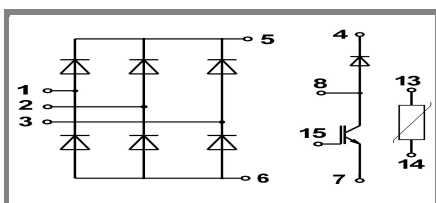
Typical Applications

- DC drives
- Controlled filed rectifiers for DC motors
- Controlled battery charger

V_{RSM} V	V_{RRM}, V_{DRM} V	$I_D = 110$ A (maximum value for continuous operation) ($T_s = 85$ °C)
1300	1200	SKD 116/12-L75
1700	1600	SKD 116/16-L75

Absolute Maximum Ratings		$T_s = 25$ °C, unless otherwise specified		
Symbol	Conditions	Values		Units
Bridge - Rectifier				
I_D	$T_s = 85$ °C; inductive load	110		A
I_{FSM}/I_{TSM}	$t_p = 10$ ms; $\sin 180^\circ$; T_{jmax}	1050		A
i^2t	$t_p = 10$ ms; $\sin 180^\circ$; T_{jmax}	5500		A ² s
IGBT - Chopper				
V_{CES}/V_{GES}		1200 / 20		V
I_C	$T_s = 25$ (70) °C	100 (75)		A
I_{CM}	$t_p = 1$ ms; $T_s = 25$ (70) °C	200 (150)		A
Freewheeling - CAL Diode				
V_{RRM}		1200		V
I_F	$T_s = 25$ (70) °C	90 (70)		A
I_{FM}	$t_p = 1$ ms; $T_s = 25$ (70) °C	180 (140)		A
T_{vj}	Diode & IGBT (Thyristor)	- 40 ... + 150 (-40...+ 125)		°C
T_{stg}		- 40 ... + 125		°C
T_{solder}	terminals, 10 s	260		°C
V_{isol}	a.c. (50) Hz, RMS 1 min. / 1 s	3000 / 3600		V

Characteristics		$T_s = 25$ °C, unless otherwise specified			
Symbol	Conditions	min.	typ.	max.	Units
Diode - Rectifier					
V_{TO} / r_t	$T_j = 125$ °C		0,8 / 7		V / mΩ
$R_{th(j-s)}$	per diode			1	K/W
IGBT - Chopper					
$V_{CE(sat)}$	$I_C = 75$ A, $T_j = 25$ °C; $V_{GE} = 15$ V		2,35		V
$R_{th(j-s)}$	per IGBT			0,4	K/W
$t_{d(on)} / t_r$	valid for all values:		70 / 50		ns
$t_{d(off)} / t_f$	$V_{CC} = 600$ V; $V_{GE} = 15$ V; $I_C = 75$ A; $T_j = 125$ °C;		450 / 45		ns
$E_{on} + E_{off}$	$T_j = 125$ °C; $R_G = 7$ Ω; inductive load		16		mJ
CAL - Diode - Freewheeling					
$V_{T(TO)} / r_t$	$T_j = 125$ °C		1 / 8	1,2 / 11	V / mΩ
$R_{th(j-s)}$	per diode			0,6	K/W
I_{RRM}	valid for all values:		65		A
Q_{rr}	$I_F = 100$ A; $V_R = -600$ V; $di_F/dt = -1000$ A/μs		15		μC
E_{off}	$V_{GE} = 0$ V; $T_j = 125$ °C				mJ
Temperature Sensor					
R_{TS}	$T = 25$ (100) °C;		1000 (1670)		Ω
Mechanical data					
M_S	mounting Torque		2,5	3,5	Nm

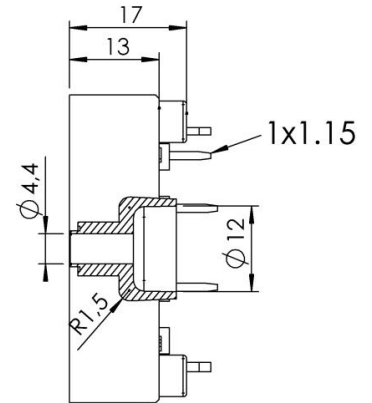
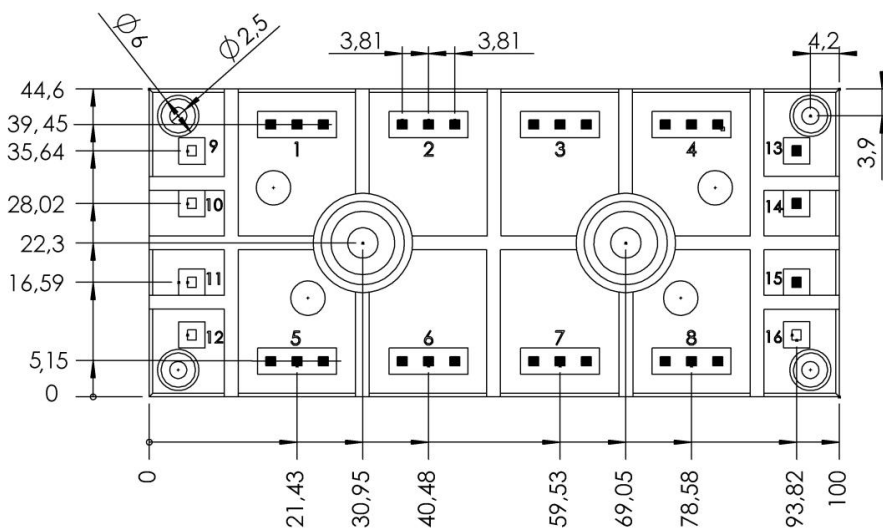
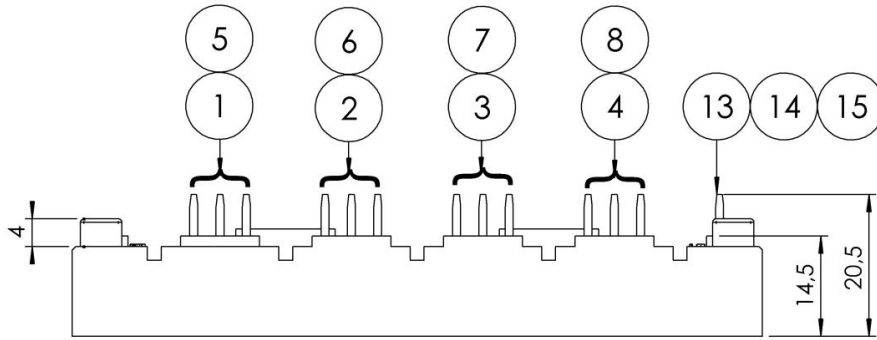


D

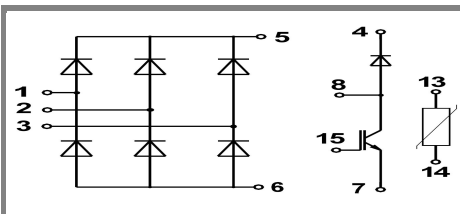
SKD 116/.. -L75

UL Recognized
File no. E 63 532

Dimensions in mm



Case G 60



Case G 60

This is an electrostatic discharge sensitive device (ESDS), international standard IEC 60747-1, Chapter IX.

This technical information specifies semiconductor devices but promises no characteristics. No warranty or guarantee expressed or implied is made regarding delivery, performance or suitability.